

Earth Observation Data Viewer (Version 2.4)

Install Manual

Japan Aerospace Exploration Agency (JAXA)

Revision history

Rev.	Date	Chapter	Descriptions
Version 1.0	Mar. 31. 2006	All	First Release
Version 1.1	Mar. 14. 2007	All pages	The expression and the contents of explanation were revised.
Version 2.0	Mar. 2008	All pages	The contents of explanation were revised.
Version 2.1	Mar. 2009	All pages	Error in writing was revised.
Version 2.2	Feb. 2010	p5, 6	The directory structure was revised.
Version 2.3	Aug. 2011	Title	Update of version information.
Version 2.4	Mar. 2015	p1, 6	<ul style="list-style-type: none">•Change the Support OS•The directory structure was revised.

Earth Observation Data Viewer Install Manual

Contents

1. Introduction	1
2. Environment	1
3. Installation	2
[Procedure 1.] Execute the installer	2
[Procedure 2.] Select Installation Folder	3
[Procedure 3.] Confirmation	4
[Procedure 4.] Completion of the installation	4
4. Directory Structure	5

1. Introduction

This document describes the procedure for installing the Earth Observation Data Viewer.

2. Environment

The required environment for the Earth Observation Data Viewer is shown in the Table 2-1. The required disk capacity for saving AMSR/AMSR-E/GLI/TRMM (PR/TMI/VIRS/combined) products is not included in the table.

Table 2-1 Machine Environment

Items	Conditions
Processor	Pentium4 CPU or more
Operating System	Windows7,8.1
RAM	2GB or more
Hard Disk capacity	1GB or more (except the capacity of the AMSR/AMSR-E , GLI and TRMM products)
Display Unit	1024 pixels by 768 lines, High Color (24 bits mode) or more
Others	Mouse or Pointing device PDF Viewer and Web Browser

The Earth Observation Data Viewer reads and stores the various data (observation data, latitude and longitude, etc.) from the HDF file into your computer’s memory. If you use this software to display the large data, please install this software into the appropriate PC which has enough memory. The memory usage of this software is shown in Figure 2-1.

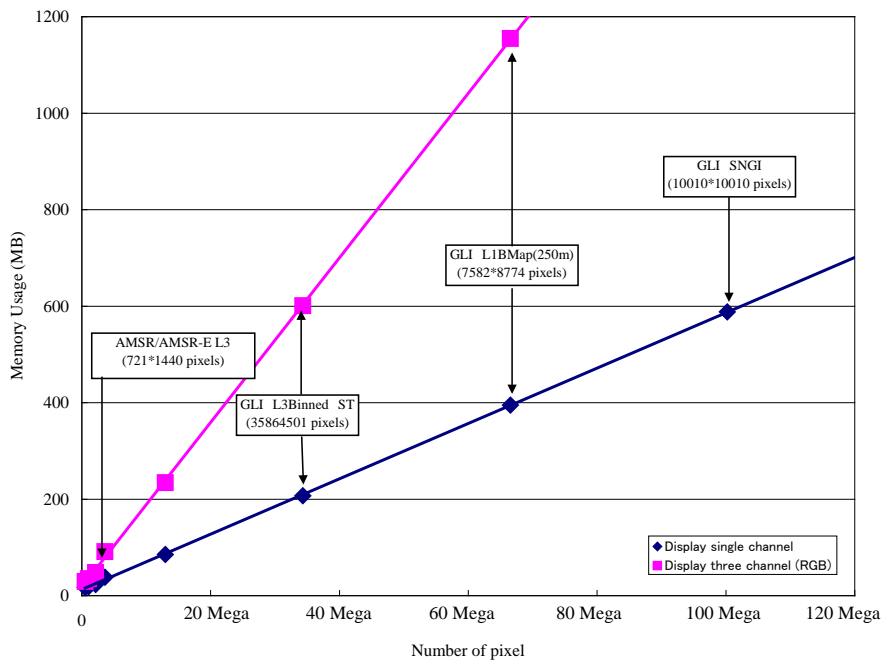


Figure 2-1 Memory usage of viewer to display HDF data

3. Installation

Download the installer program of the “Earth Observation Data Viewer” from JAXA/EOC web site. And expand it.

Preparing. Remove another version of Earth Observation Data Viewer

Remove other version of Earth Observation Data Viewer, when you have installed it. Use the following steps to remove Earth Observation Data Viewer.

[In the case of Windows7]

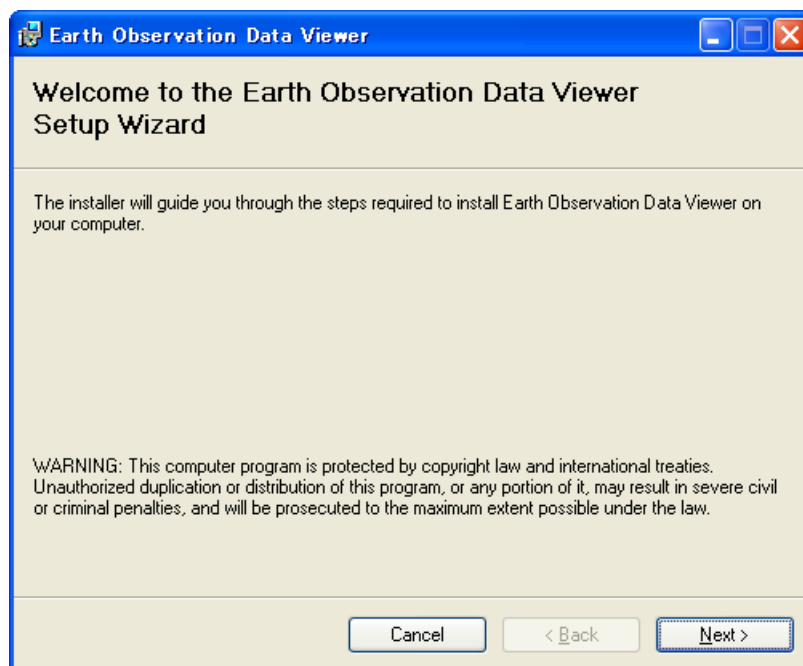
- (1) Quit Earth Observation Data Viewer.
- (2) On the [Start] menu, click [Control Panel].
- (3) In Control Panel, open [Programs and Features].
- (4) Select [Earth Observation Data Viewer] from the list of currently installed programs, then click uninstall.
- (5) When asked if you would like to remove Earth Observation Data Viewer, select [Yes].
- (6) Wait to finish the progress.

[In the case of Windows8.1]

- (1) Quit Earth Observation Data Viewer.
- (2) Display start menu, click [↓] button displaying on left-bottom corner.
- (3) Select [Earth Observation Data Viewer] from the list of currently installed programs, then click uninstall.
- (4) When asked if you would like to remove Earth Observation Data Viewer, select [Yes].
- (5) Wait to finish the progress.

[Procedure 1.] Execute the installer

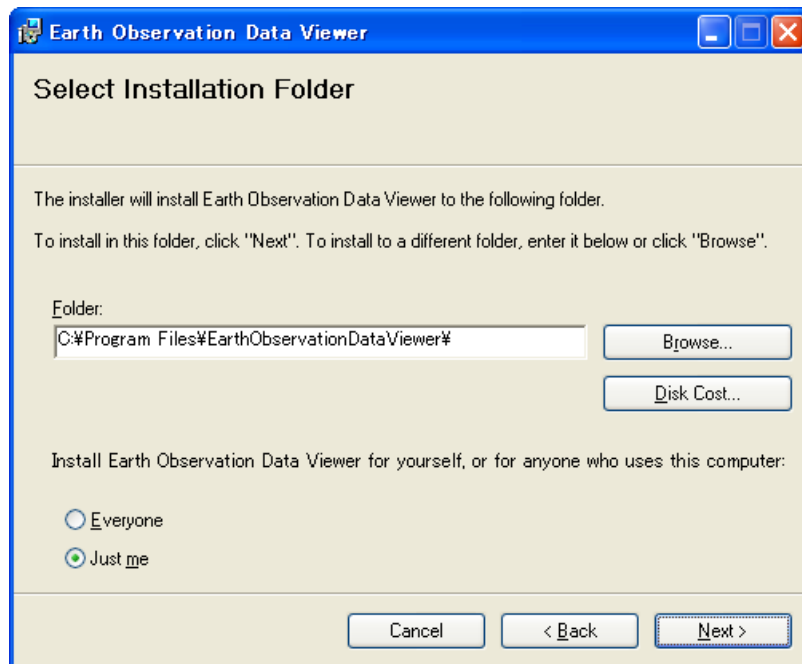
Double-click the installer program named “Setup.exe”; the following Setup Wizard will be displayed.



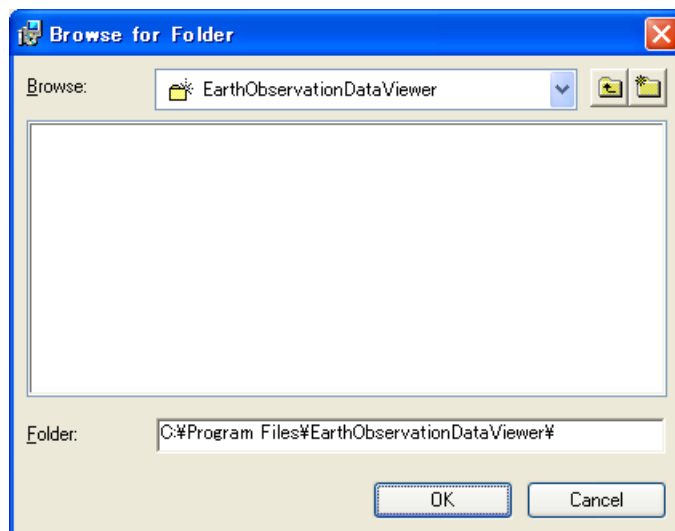
Click the [Next] button, if you want to continue this installer.

[Procedure 2.] Select Installation Folder

Select the installation folder for this software. The default folder for this installation is “c:\Program Files\EarthObservationDataViewer”.

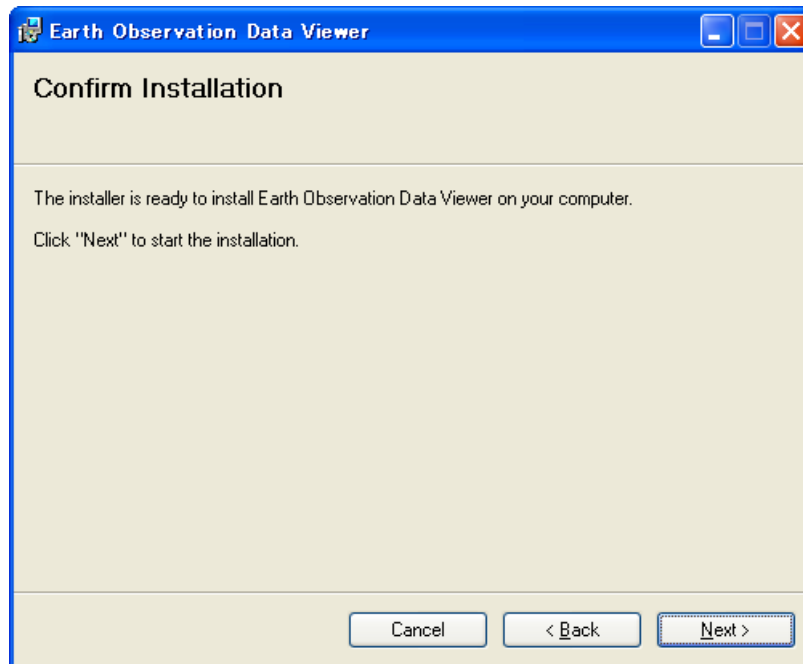


If you want to change the folder, click the **[Browse]** button. The following dialog will be displayed. Then you can change the installation folder, select other existing folder or create the new folder. And click the **[OK]** button after specifying the installation folder.



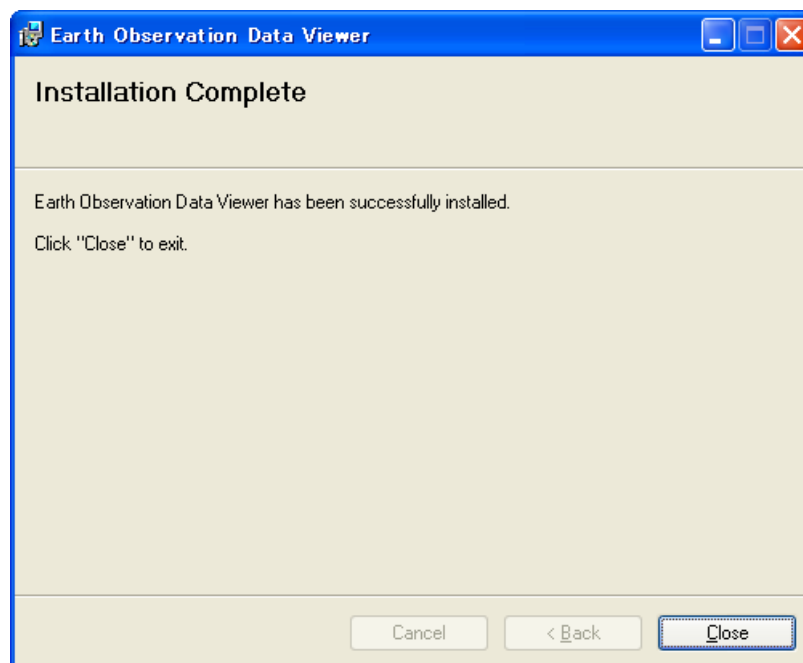
[Procedure 3.] Confirmation

Click the **[Next]** button, if you want to continue this installation. Then the installation process is activated. Click the **[Back]** button, if you want to change the installation folder. If you want to discontinue the installation of this software, click the **[Cancel]** button.



[Procedure 4.] Completion of the installation

If the installation is successfully accomplished, the following dialog will be displayed. And please click the **[Close]** button to terminate the installation process.



After installation finished, Click the **[Earth Observation Data Viewer]** from the program menu (windows7) or application menu (windows8.1), run the tool.

4. Directory Structure

The directory structure of the default installation is shown in figure 4-1. If you change the installation directory while the installation, the directory shall be replaced with your specified folder. The explanation of directory structure is shown in Table 4-1.

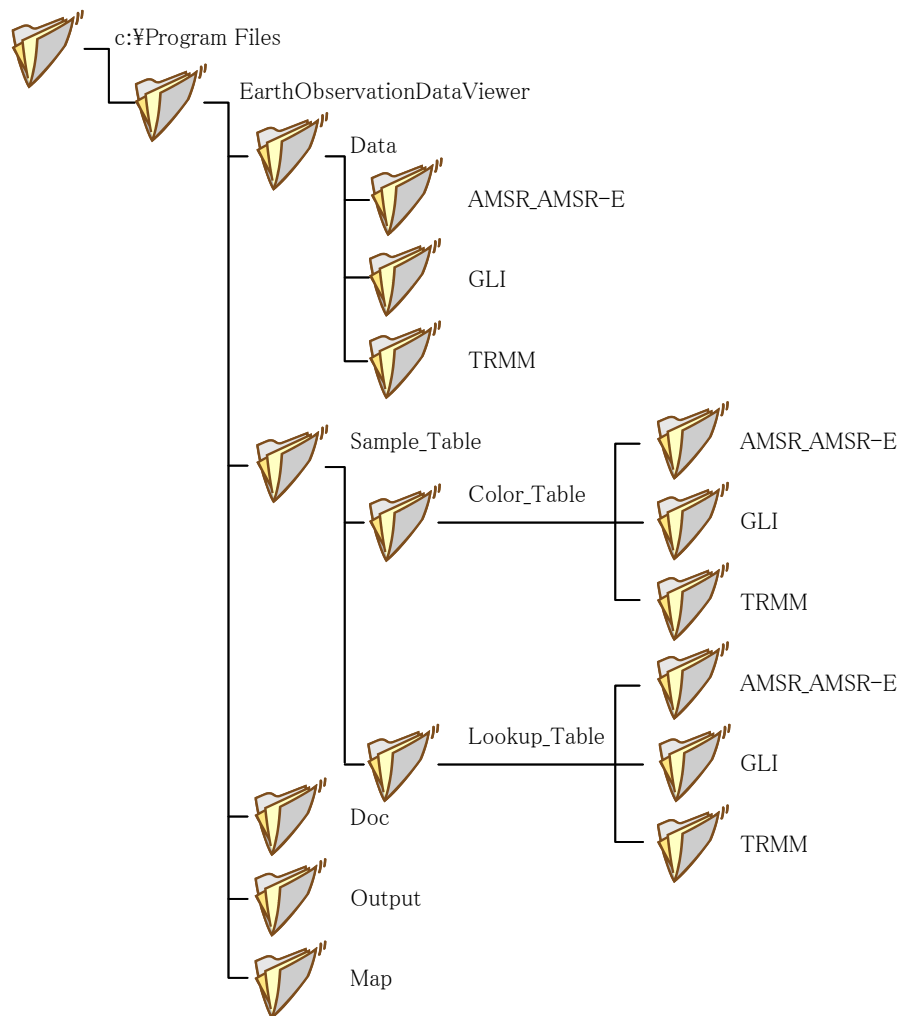


Figure 4-1 the directory structure of the default installation

Table 4-1 Explanation of the directory structure of the default installation

Folder Name	File Name	Descriptions		
EarthObservationDataViewer	mfc120.dll	The dynamic MFC library.		
	msvcp120.dll			
	msvcr120.dll			
	zlib1.dll	The dynamic Compression library.		
	EarthObservationDataViewer.exe	Executable binary		
	EarthObservationDataViewer.ini	Parameter file		
	GLI_PRODUCT_TYPE.ini			
TRMM_PRODUCT_TYPE.ini				
Data	AMSR_AMSR-E	AMSR/AMSR-E Product		
	GLI	GLI Product		
	TRMM	TRMM Product		
Doc	EODV_Manual_EN.pdf	User's manual (English version) (HTML file is used to display PDF file on the web browser.)		
	EODV_Manual_EN.html			
	EODV_Link_EN.html	The related links(English version)		
	EODV_FAQ_Content_EN.html	FAQ(English version)		
	EODV_FAQ_Response_EN.html			
	EODV_FAQ_Title_EN.html			
EODV_FAQ_EN.html				
Output	Sample_Table	Color_Table	AMSR_AMSR-E	Color table folder
			GLI	AMSR/AMSR-E Color table file
			TRMM	GLI Color table file
	Lookup_Table	Color_Table	TRMM	TRMM Color table file
			AMSR_AMSR-E	Lookup table folder
			GLI	AMSR/AMSR-E Color table file
			TRMM	GLI Color table file
	Map	gshhs_c.b, gshhs_l.b, gshhs_i.b	TRMM	TRMM Color table file
				Map data (Low/Normal /High resolution)