

Transportation from Narita International Airport to Akihabara Station

■ By Train:

① Keisei Skyliner one way reserved seat fare : ¥2,400 (Narita Airport Station→Nippori Station)

From Narita Airport Station, you go to “Nippori” station by Keisei Skyliner and change train to JR Yamanote Line or Keihin Tohoku Line to Akihabara station (approximately 55min.)

※Keisei Skyliner Time Table :

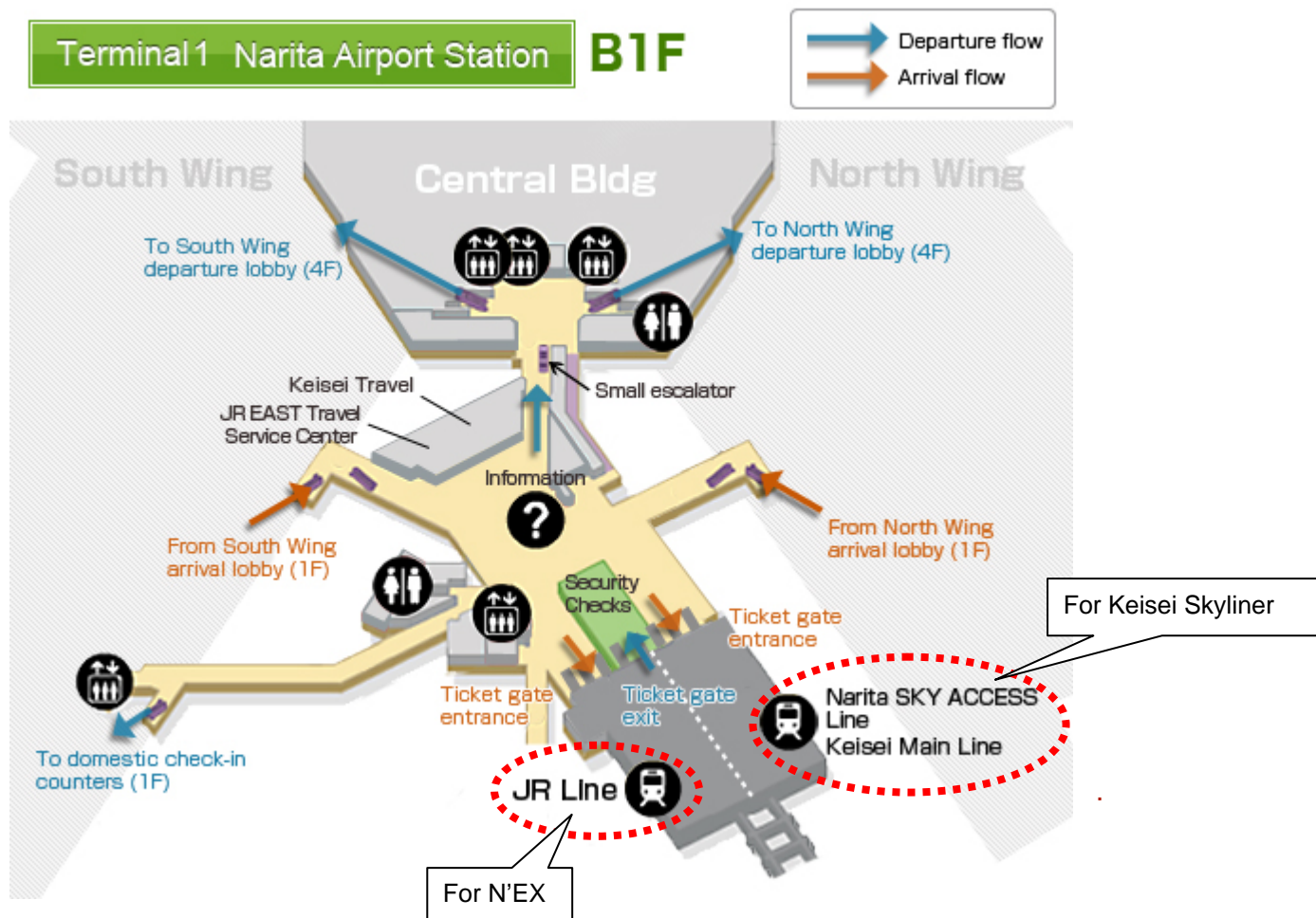
<http://www.keisei.co.jp/keisei/tetudou/skyliner/us/timetable/index.html#nrt1skyliner>

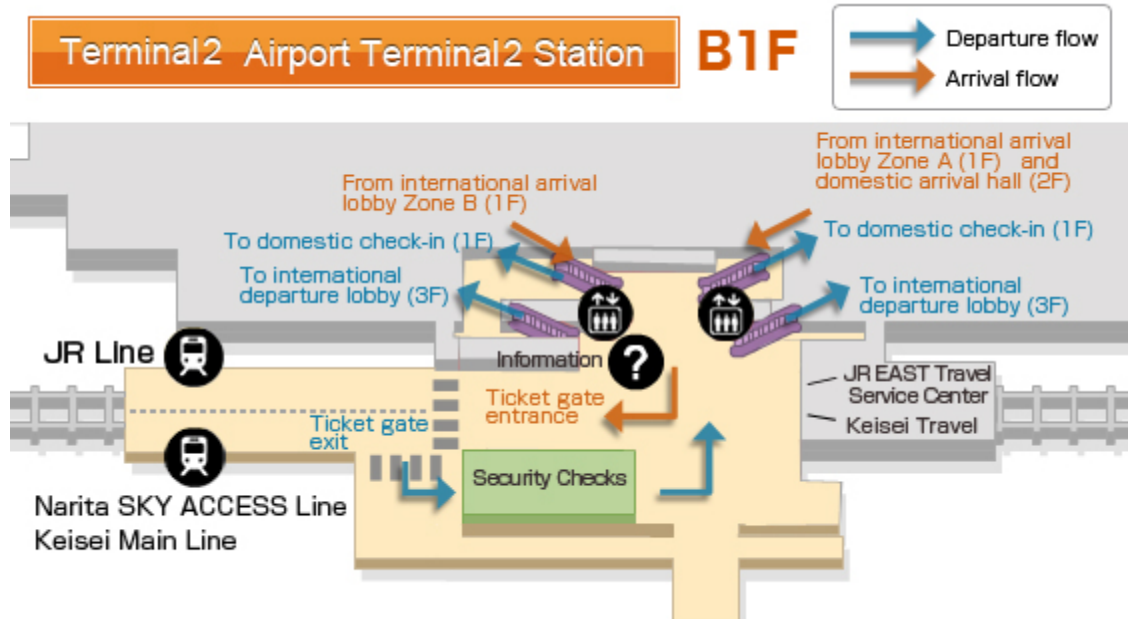
② N'EX(Narita Express) one way reserved seat fare : ¥2,940

From Narita Airport Station, you go to “Tokyo” station by Narita Express and change train to JR Yamanote Line/Keihin-Tohoku Line to Akihabara station (approximately 70min.)

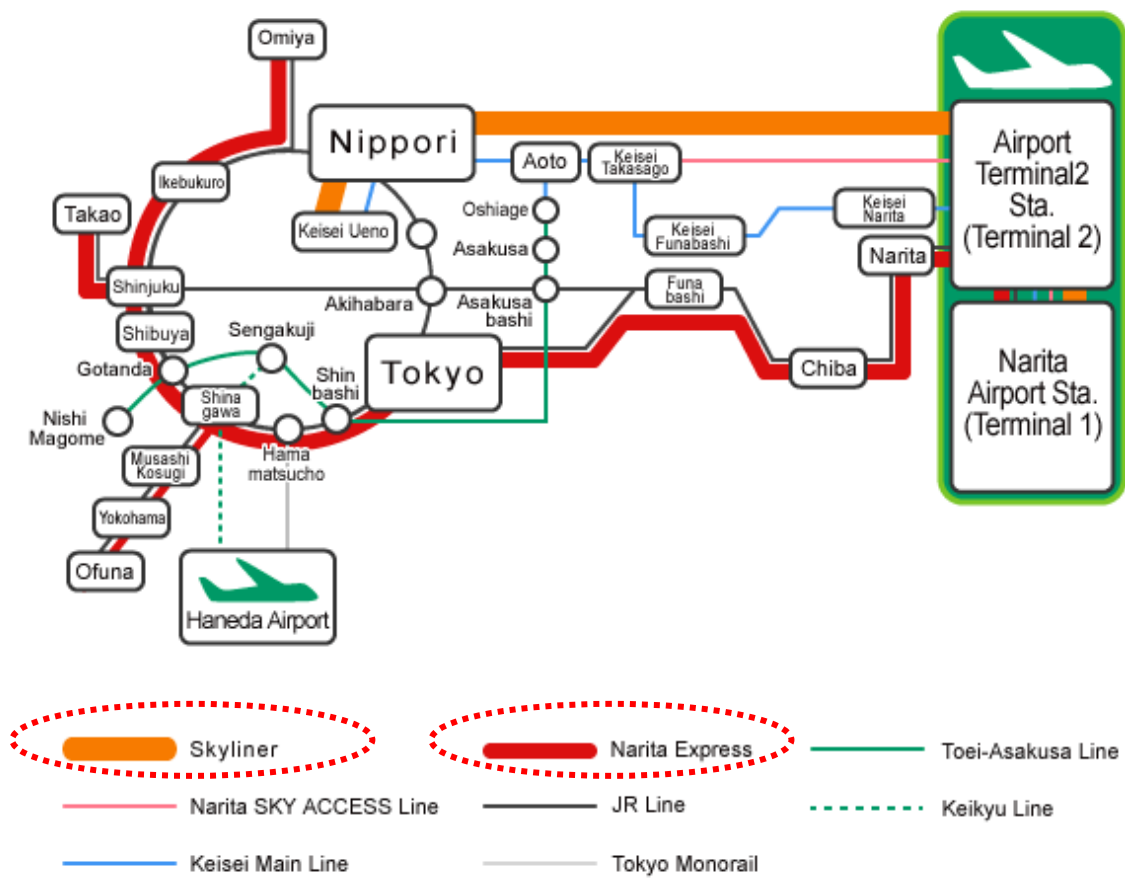
※Narita Express Time Table :

http://jreast-shinkansen-reservation.eki-net.com/pc/english/common/timetable/e_nex_u/index.html





There is one station each for the two terminals at Narita Airport:
Airport Terminal 2 Station and **Narita Airport Station (Terminal 1)**.
 Before arriving at the airport, please check which terminal your airline uses.



■By Bus

Airport Limousine Bus

You take the Airport Limousine Bus from Narita Airport to Tokyo station (It costs 3,000 Yen). And you take the train JR Yamanote Line or Keihin -Tohoku Line to Akihabara station. Or you take a taxi from Tokyo station to Akihabara station (It costs about 1,250 Yen).

※Airport Limousine Bus Official Site :

http://www.limousinebus.co.jp/en/bus_services/narita/tokyo_nihonbashi.html

Airport Limousine Bus Stops are located outside the terminal building.

Please obtain your bus boarding tickets at Airport Limousine Ticketing Counter and then come to the designated bus stop shown on the ticket.

Airport Limousine Bus Stops are shown in color on the map.

If you arrive at Terminal 1 North Wing, please get on the Limousine bus from the bus stop No.1

If you arrive at Terminal 1 South Wing, please get on the Limousine bus from the bus stop No.10

If you arrive at Terminal 2, please get on the Limousine bus from the bus stop No.7 or 17

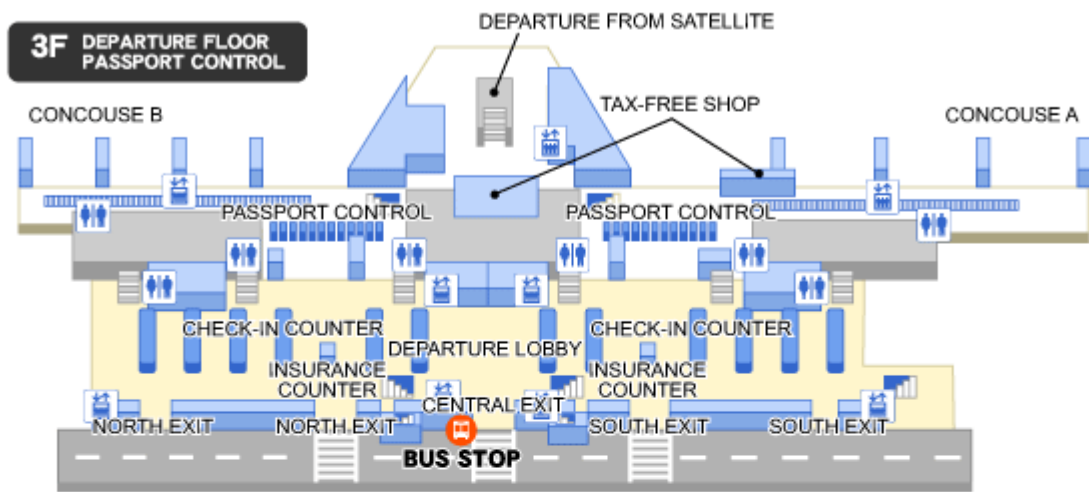
[Passenger Terminal 1 at Narita Airport]

Site plan showing bus pick up and drop-off points and ticket counters:Passenger Terminal1 1F,4F



[Passenger Terminal 2 at Narita Airport]

Site plan showing bus pick up and drop-off points and ticket counters: Passenger Terminal 2 1F,3F



The hotels near Akihabara Station



- 1 Akihabara Washington Hotel
- 2 Remm Akihabara
- 3 Dormy Inn Akihabara
- 4 Hotel MyStays Ochanomizu
- 5 Ochanomizu Hotel Juraku

- 6 Kanda Station Hotel
- 7 Keio Presso Inn Kanda
- 8 Kanda Central Hotel
- 9 Super Hotel Ueno-okachimahi
- 10 New Central Hotel