



# Reprocessings of SGLI Standard Monitor AROT NetCDF Creation and Minor Version Updates

2023/06/20 published

# Overview



## ➤ Purpose of the reprocessing

We reprocessed JASEMES AROT NetCDF, because A bug of Mask\_for\_statistics was found on SGLI standart product (L2 ARNPK v3002), input data of JASMES NetCDF. The bug caused a snow contamination.

(Details of the bug: [https://suzaku.eorc.jaxa.jp/GCOM\\_C/data/V3BugInfo.html](https://suzaku.eorc.jaxa.jp/GCOM_C/data/V3BugInfo.html) )

We also reprocessed anomaly images of the period 8-day/Monthly files are reprocessed.

To distinguish from NetCDF already published, We set new minor version of reprocessed file as “3103”.

## ➤ File name format

File names of the reprocessed files are named as follows.

Global Daily	: GC1SG1_YYMMDDD01D_D0000_3MSG_AROTM_3103.nc
Global 8day	: GC1SG1_YYMMDDD08D_D0000_3MSG_AROTM_3103.nc
Global Monthly	: GC1SG1_YYMMDDD01M_D0000_3MSG_AROTM_3103.nc

Japan Daily	: GC1SG1_YYMMDDD08D_J0000_L2SG_AROTK_3103.nc
Japan 8day	: GC1SG1_YYMMDDD08D_J0000_L2SG_AROTK_3103.nc
Japan Monthly	: GC1SG1_YYMMDDD01M_J0000_L2SG_AROTK_3103.nc

Details of the replacement and comparison images of the v3002 and v3003 are shown on the subsequent pages.

# Details of the reprocessing : Global



Table 1 : Details of the reprocessing Global

Global		~2021/12	2022/01~2022/05	2022/06~
Daily	Existing File status	Created from v3003 SGLI standard products.	Created from v3001, v3002 SGLI standard products output as GC1SG1_YYYYMMDD01D_D0000_3MSG_AROTM_3000.nc	Created from v3003 SGLI standard products
	Reprocessing Details	No reprocessing	Created from reprocessed v3003 SGLI standard products	No reprocessing
	Name of Reprocessed files		GC1SG1_YYYYMMDD01D_D0000_3MSG_AROTM_3103.nc	
8-day Monthly	Existing File status	Created from Daily NetCDF based on v3003 SGLI standard products	Created from Daily NetCDF based on v3001, v3002 output as GC1SG1_YYYYMMDD01D_D0000_3MSG_AROTM_3000.nc	Created from Daily NetCDF based on v3003 SGLI standard products
	Reprocessing Details	No reprocessing	Created from reprocessed Daily NetCDF	No reprocessing
	Name of Reprocessed files		GC1SG1_YYYYMMDD08D_D0000_3MSG_AROTM_3103.nc GC1SG1_YYYYMMDD01M_D0000_3MSG_AROTM_3103.nc	

Shaded areas in the table are subject to reprocessing.

We modified a part of attribute information with changes of minor version and file name.  
We also reprocessed anomaly images of the period reprocessed 8-day/Monthly.

# Details of the reprocessing : Japan



Table 2 : Details of the reprocessing : Japan

Japan		~2021/12	2022/01~2022/05	2022/06~
Daily	Existing File status	Created from v3001, v3002 SGLI standard products output as GC1SG1_YYYYMDDDD01D_J0000_L2SG_AROTK_3001.nc GC1SG1_YYYYMDDDD01D_J0000_L2SG_AROTK_3002.nc	Created from v3001, v3002 SGLI standard products output as GC1SG1_YYYYMDDDD01D_J0000_L2SG_AROTK_3001.nc GC1SG1_YYYYMDDDD01D_J0000_L2SG_AROTK_3002.nc	Created from v3003 SGLI standard products
	Reprocessing Details	Rewrite Mask_for_statistics to the same contents as v3003	Rewrite Mask_for_statistics to the same contents as v3003	No reprocessing
	Name of Reprocessed files	GC1SG1_YYYYMDDDD01D_J0000_L2SG_AROTK_3103.nc	GC1SG1_YYYYMDDDD01D_J0000_L2SG_AROTK_3103.nc	
8-day Monthly	Existing File status	Created from Daily NetCDF based on v3001, v3002 output as GC1SG1_YYYYMDDDD08D_J0000_L2SG_AROTK_3100.nc GC1SG1_YYYYMDDDD01M_J0000_L2SG_AROTK_3100.nc	Created from Daily NetCDF based on v3001, v3002 output as GC1SG1_YYYYMDDDD08D_J0000_L2SG_AROTK_3100.nc GC1SG1_YYYYMDDDD01M_J0000_L2SG_AROTK_3100.nc	Created from Daily NetCDF based on v3003 SGLI standard products
	Reprocessing Details	Created from reprocessed Daily NetCDF	Created from reprocessed Daily NetCDF	No reprocessing
	Name of Reprocessed files	GC1SG1_YYYYMDDDD08D_J0000_L2SG_AROTK_3103.nc GC1SG1_YYYYMDDDD01M_J0000_L2SG_AROTK_3103.nc	GC1SG1_YYYYMDDDD08D_J0000_L2SG_AROTK_3103.nc GC1SG1_YYYYMDDDD01M_J0000_L2SG_AROTK_3103.nc	

Shaded areas in the table are subject to reprocessing.

We modified a part of attribute information with changes of minor version and file name.  
We also reprocessed anomaly images of the period reprocessed 8-day/Monthly.



# Image comparison of minor version differences



Aerosol Optical Thickness at 500 nm [(Equal Rectangular projection: Global) 2022/03 Monthly average (Descending)]

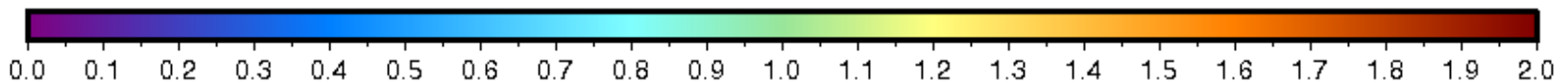
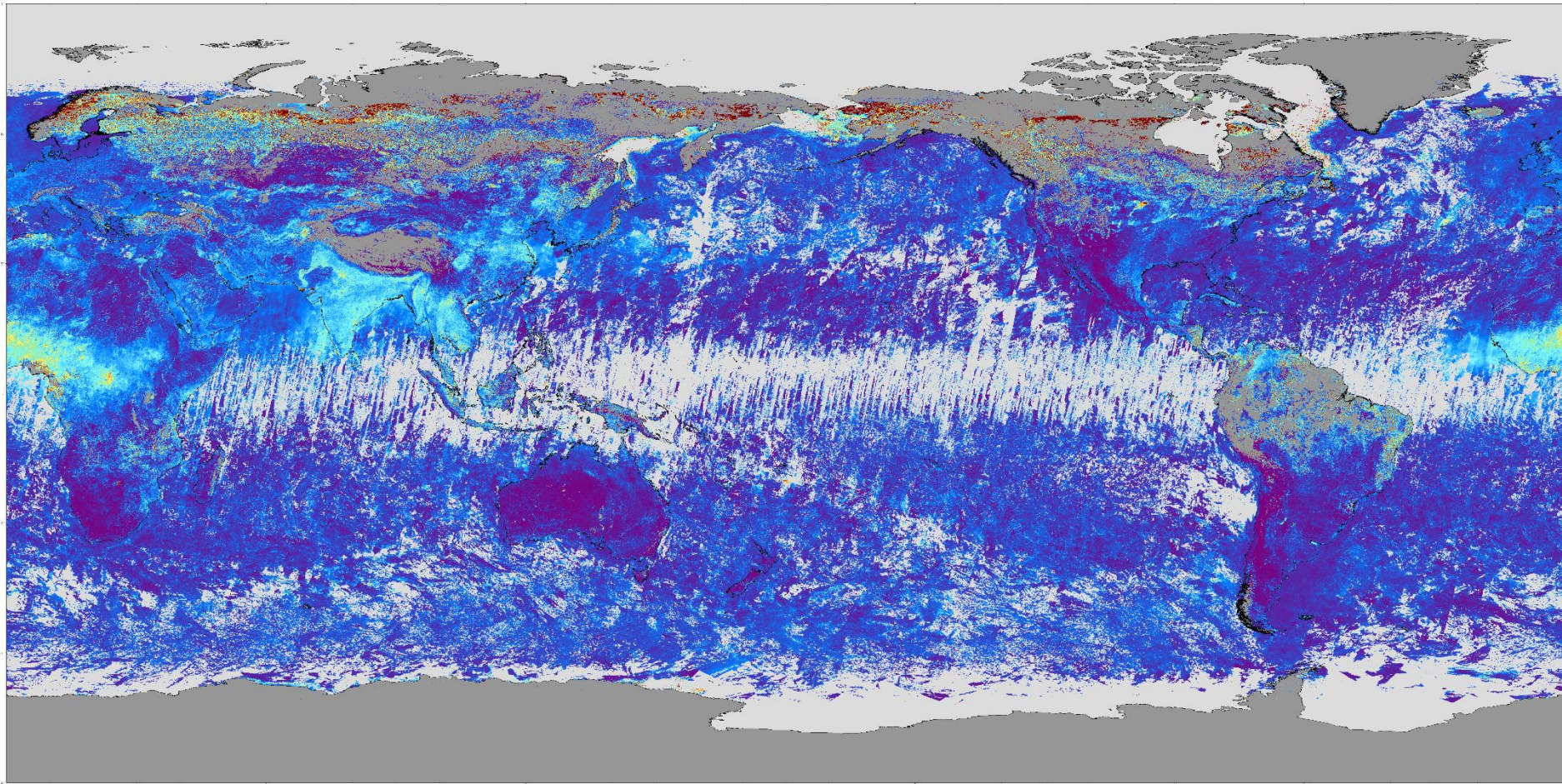


Figure 1 : a monthly AROT image of 2023/03 created from v3002  
GC1SG1\_20220301D01M\_D0000\_3MSG\_AROTM\_3100.nc



# Image comparison of minor version differences



Aerosol Optical Thickness at 500 nm [(Equal Rectangular projection: Global) 2022/03 Monthly average (Descending)]

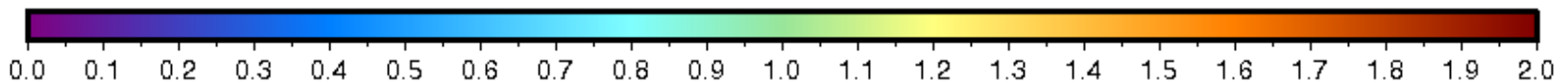
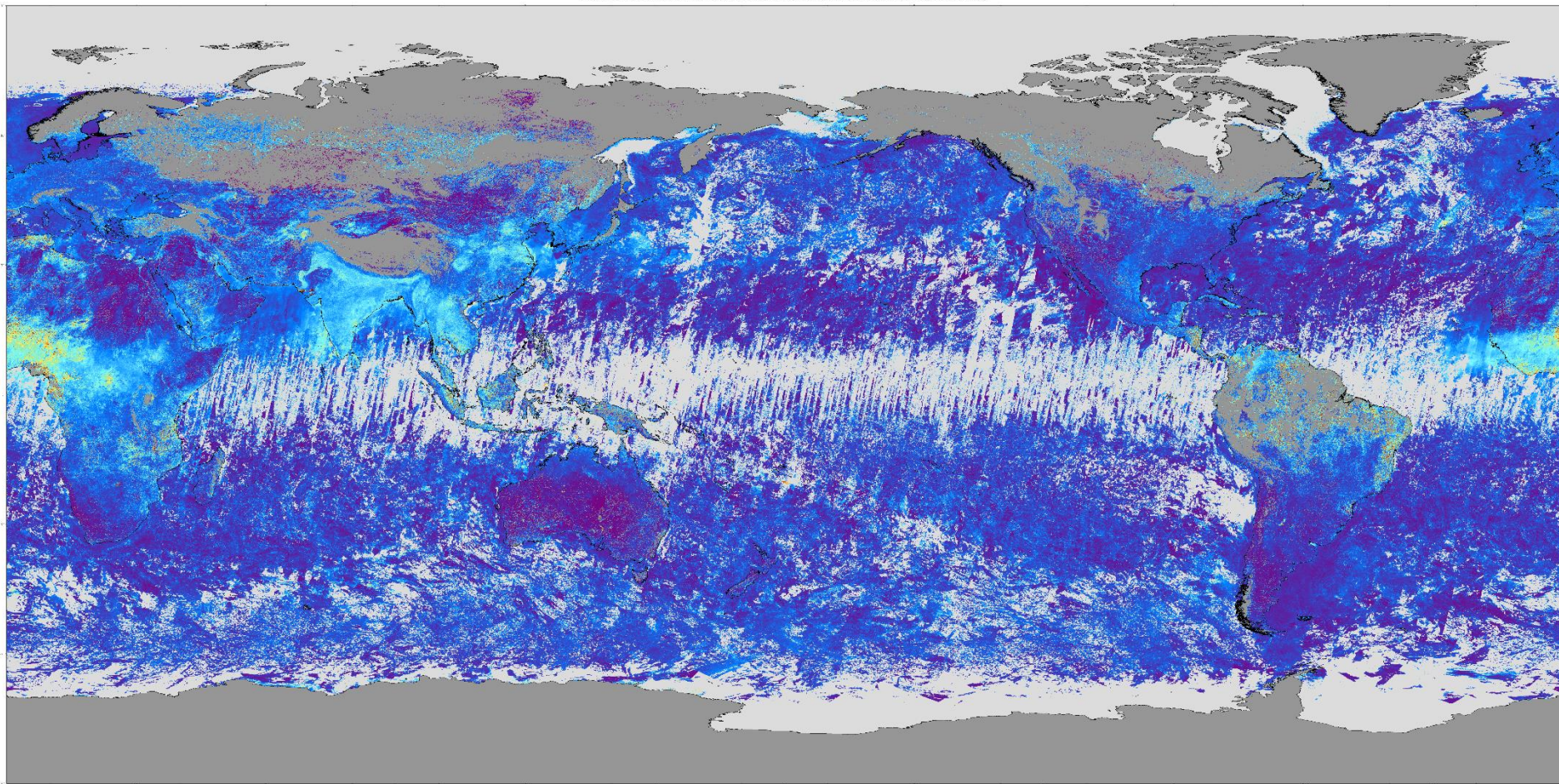


Figure 2: a monthly AROT image of 2023/03 created from v3003  
GC1SG1\_20220301D01M\_D0000\_3MSG\_AROTM\_3103.nc