

# 【Update Information of JASMES SGLI Standard Monitor】

2022/03/22

- ✓ JASMES SGLI Standard Monitor added the new product.
- ✓ The bugs included in JASMES Version2 products have been fixed and Reprocessed.
- ✓ JASMES Version2 products of Global have been Reprocessed.(2018-2019)
- ✓ The data from 2018 January to March is during the initial checkout period, so the observation operation and sensor settings are different from usual.
- ✓ We are planning to reprocess the data of 2018 January to March of global Top of atmosphere radiance of 8day and Monthly.

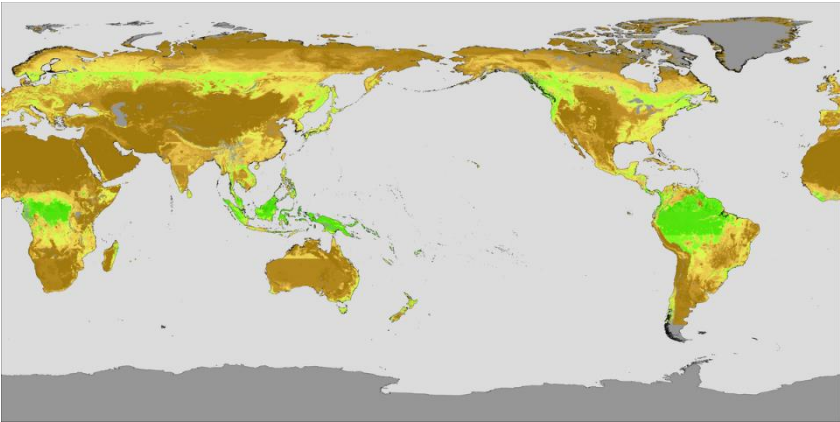
No.	Product	Product ID	Product type	Temporal Statistics			Update information	Data period	Note
				1D	8D	1M			
1	Above Ground Biomass	AGB_		<input type="radio"/>	<input type="radio"/>	<input type="radio"/>	Added the product	2018/1/1~	
2	Fraction of Absorbed Photosynthetically Active Radiation	FPAR		<input type="radio"/>	<input type="radio"/>	<input type="radio"/>	Added the product	2018/1/1~	
3	Total suspended matter	TSM_		<input type="radio"/>	<input type="radio"/>	<input type="radio"/>	Added the product	2018/1/1~	
4	Colored dissolved organic matter at 412nm	CDOM		<input type="radio"/>	<input type="radio"/>	<input type="radio"/>	Added the product	2018/1/1~	
5	Top-of-atmosphere radiance TIO2	LT02	Global (5km)	<input type="radio"/>	<input type="radio"/>	<input type="radio"/>	Fixed because an invalid value was stored	2018/1/1~	Reprocessed of Ver2
6	Geometry(LRAI, LRAP, LRAV)	LRAI LRAP LRAV		<input type="radio"/>	<input type="radio"/>	<input type="radio"/>	Modified attribute information of Absolute_relative_azimuth	2018/1/1~	Reprocessed of Ver2
7	Geometry(LSZI, LSZP, LSZV)	LSZI LSZP LSZV		<input type="radio"/>	<input type="radio"/>	<input type="radio"/>	Modified attribute information of Solar_zenith	2018/1/1~	Reprocessed of Ver2
8	Geometry(LVZI, LVZP, LVZV)	LVZI LVZP LVZV		<input type="radio"/>	<input type="radio"/>	<input type="radio"/>	Modified data type of Sensor_zenith	2018/1/1~	Reprocessed of Ver2
9	Temperature of CCloud Top layer	CLTT	Japan (250m)	<input type="radio"/>	<input type="radio"/>	<input type="radio"/>	Added the product	2020/1/1~	
10	Optical Thickness of water cloud droplets	COTW		<input type="radio"/>	<input type="radio"/>	<input type="radio"/>	Added the product	2020/1/1~	
11	Ratio of the number of cloud pixels(Cloud type composite)	CFRG		<input type="radio"/>			Added the product	2020/1/1~	
12	Ratio of the number of cloud pixels(Cirrus)	CFR1			<input type="radio"/>	<input type="radio"/>	Added the product	2020/1/1~	
13	Ratio of the number of cloud pixels(Cirro-stratus)	CFR2			<input type="radio"/>	<input type="radio"/>	Added the product	2020/1/1~	
14	Ratio of the number of cloud pixels(Deep convection)	CFR3			<input type="radio"/>	<input type="radio"/>	Added the product	2020/1/1~	
15	Ratio of the number of cloud pixels(Alto-cumulus)	CFR4			<input type="radio"/>	<input type="radio"/>	Added the product	2020/1/1~	
16	Ratio of the number of cloud pixels(Alto-stratus)	CFR5			<input type="radio"/>	<input type="radio"/>	Added the product	2020/1/1~	
17	Ratio of the number of cloud pixels(Nimbo-stratus)	CFR6			<input type="radio"/>	<input type="radio"/>	Added the product	2020/1/1~	
18	Ratio of the number of cloud pixels(Cumulus)	CFR7			<input type="radio"/>	<input type="radio"/>	Added the product	2020/1/1~	
19	Ratio of the number of cloud pixels(Strato-cumulus)	CFR8			<input type="radio"/>	<input type="radio"/>	Added the product	2020/1/1~	
20	Ratio of the number of cloud pixels(Alto-stratus)	CFR9			<input type="radio"/>	<input type="radio"/>	Added the product	2020/1/1~	
21	Ratio of the number of cloud pixels(ALL)	CFRA			<input type="radio"/>	<input type="radio"/>	Added the product	2020/1/1~	1
22	Snow and Ice Surface Temperature	SIST		<input type="radio"/>	<input type="radio"/>	<input type="radio"/>	Added the product	2020/1/1~	
23	Geometry(LEOI)	LEOI		<input type="radio"/>	<input type="radio"/>	<input type="radio"/>	Added Solar_azimuth/Solar_zenith	2020/1/1~	Reprocessed of Ver2
24	Geometry(GEOI)	GEOI		<input type="radio"/>			Added Solar_azimuth/Solar_zenith	2020/1/1~	Reprocessed of Ver2

Bug fix

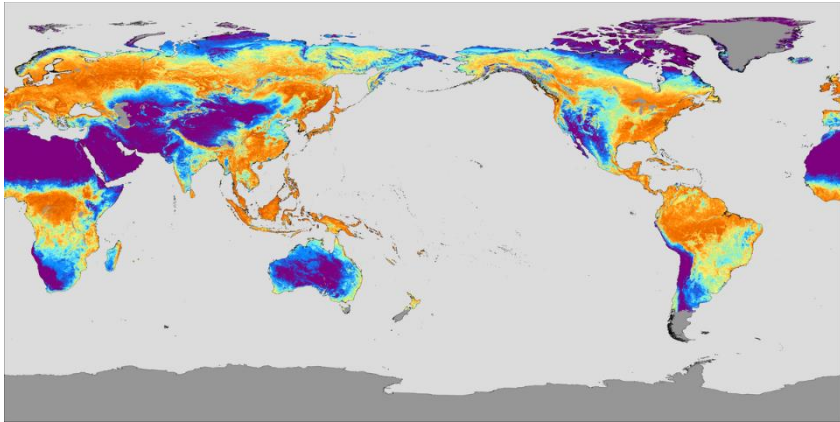
Bug fix

**【New additional product of JASMES SGLI Standard Monitor】**

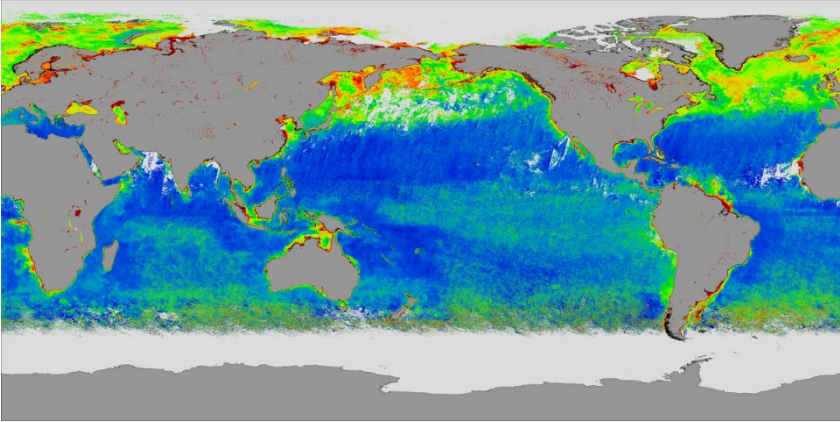
✓ Global: 4products



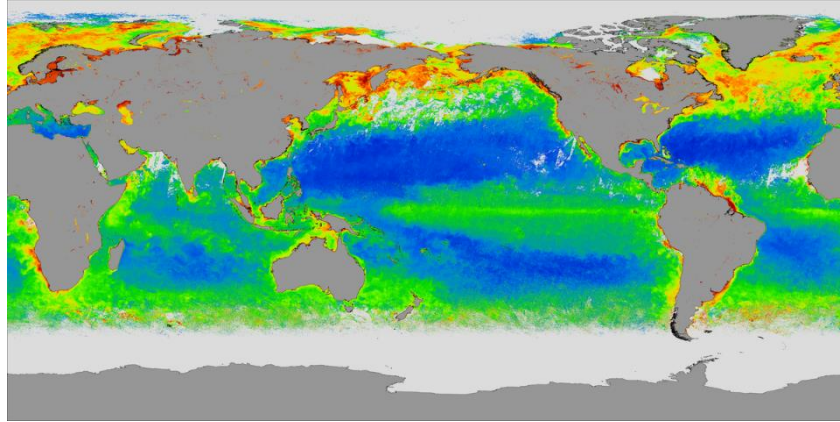
Above Ground Biomass



Fraction of Absorbed Photosynthetically Active Radiation



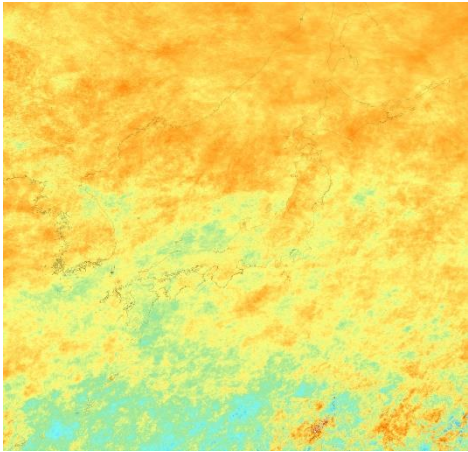
Total suspended matter



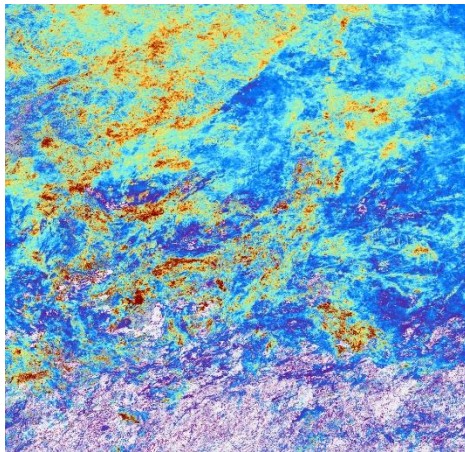
Colored dissolved organic matter at 412nm

# 【New additional product of JASMES SGLI Standard Monitor】

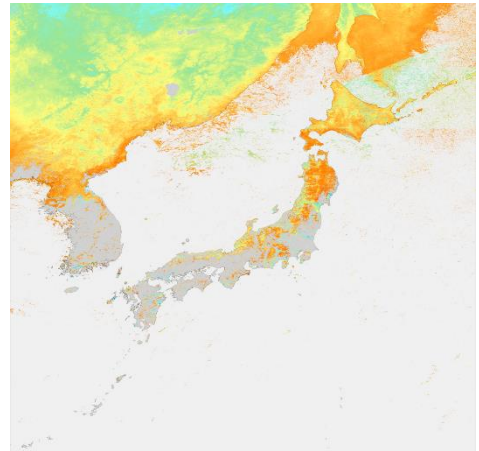
✓ Japan Daily: 4products、8-day、 Monthly: 10products



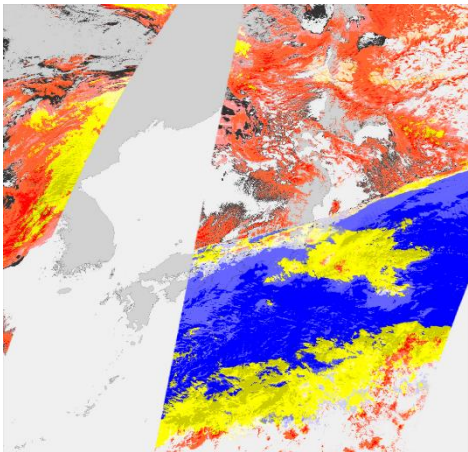
Temperature of Cloud Top layer



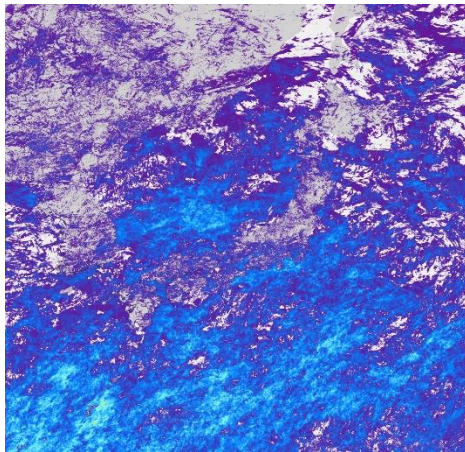
Optical Thickness  
of water cloud droplets



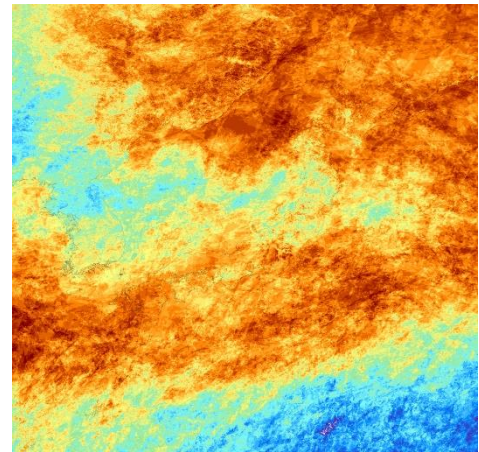
Snow and Ice  
Surface Temperature



Ratio of the number  
of cloud pixels  
(Cloud type composite)  
✖Daily



Ratio of the number  
of cloud pixels  
(Cirrus)  
✖8-day、 Monthly



Ratio of the number  
of cloud pixels  
(ALL)  
✖8-day、 Monthly