

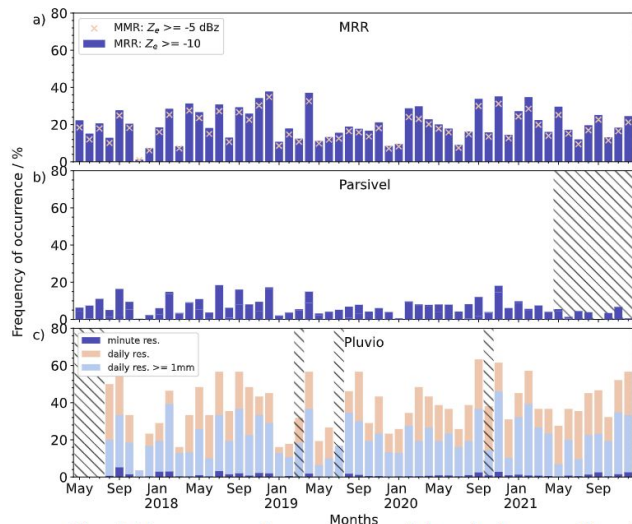
Multi-year precipitation characteristics based on in-situ and remote sensing observations at the Arctic research site Ny-Ålesund, Svalbard



Kerstin Ebell¹, Mario Mech¹, C. Buhren¹, M. Lauer¹, S. Dahlke², and P. Krobot¹



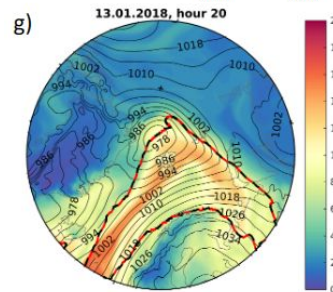
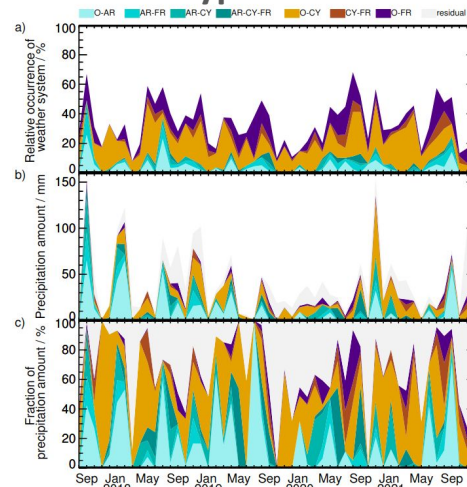
Analysis of time series



Precip measurements at an Arctic site



Weather type classification



Which weather systems cause extreme precipitation events at Ny-Ålesund?