

***Scientific
Question:***

*How can we
compare
GSMaP ISRO
Rain with
GSMaP over
India?*

*Extended Triple
Collocation for
Enhanced Precipitation
Analysis: Evaluating
and Integrating GSMaP
ISRO Rain, GSMaP,
CHIRPS and ERA5*

Scientific Question:

How can we compare GSMaP ISRO Rain with GSMaP over India?

Challenges:

- *Direct comparison with IMD may be biased, as IMD data is already incorporated into GSMaP ISRO Rain.*
- *Alternative Approach – Triple and Extended Triple Collocation. However, Triple and Extended Triple Collocation require error in data to be independent.*

*Extended Triple Collocation for Enhanced Precipitation Analysis:
Evaluating and Integrating GSMaP ISRO Rain, GSMaP, CHIRPS and ERA5*

Scientific Question:

How can we compare GSMaP ISRO Rain with GSMaP over India?

Challenges:

- *Direct comparison with IMD may be biased, as IMD data is already incorporated into GSMaP ISRO Rain.*
- *Alternative Approach – Triple and Extended Triple Collocation. However, Triple and Extended Triple Collocation require error in data to be independent.*

Proposed Solution:

- *Use ERA5 and CHIRPS for their independent data.*
- *Analyze triplets: (GSMaP ISRO Rain, CHIRPS, ERA5) and (GSMaP, CHIRPS, ERA5) via TC/ETC.*
- *Compare GSMaP ISRO Rain and GSMaP using triplet-derived relationships.*

Extended Triple Collocation for Enhanced Precipitation Analysis: Evaluating and Integrating GSMaP ISRO Rain, GSMaP, CHIRPS and ERA5

Scientific Question:

How can we compare GSMaP ISRO Rain with GSMaP over India?

Challenges:

- Direct comparison with IMD may be biased, as IMD data is already incorporated into GSMaP ISRO Rain.
- Alternative Approach – Triple and Extended Triple Collocation. However, Triple and Extended Triple Collocation require error in data to be independent.

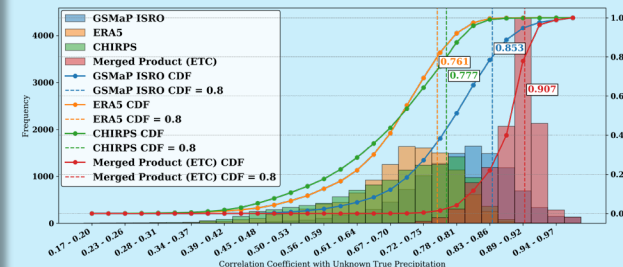
Proposed Solution:

- Use ERA5 and CHIRPS for their independent data.
- Analyze triplets: (GSMaP ISRO Rain, CHIRPS, ERA5) and (GSMaP, CHIRPS, ERA5) via TC/ETC.
- Compare GSMaP ISRO Rain and GSMaP using triplet-derived relationships.

Results:

For Aw (Tropical, savannah) climatic zone of India:

- GSMaP ISRO Rain > CHIRPS > GSMaP > ERA5.
- Developed merged product performs best.



Extended Triple Collocation for Enhanced Precipitation Analysis: Evaluating and Integrating GSMaP ISRO Rain, GSMaP, CHIRPS, and ERA5 Rainfall Data

Abhigyan Chakraborty¹, Yashraj Upase², Shruti Upadhyaya^{1,2,3}

¹Department of Civil Engineering, Indian Institute of Technology, Hyderabad, 502285, India
²Department of Climate Change, Indian Institute of Technology, Hyderabad, 502285, India
³Advanced Radar Research Center, University of Oklahoma, Norman, OK - 73072, USA



1. Introduction:

- Background and Objective:** GSMaP ISRO Rain, a collaborative product by ISRO and JAXA, corrects GSMaP using IMD gauge data from March 2000. This study aims to assess GSMaP ISRO Rain's accuracy compared to GSMaP over India.
- Statistical Method:** Triple Collocation (TC) and Extended Triple Collocation (ETC) allow estimation of error variances and correlation with unknown truth without ground truth data. These methods also enable development of a merged product with reduced error variance and improved correlation coefficient (CC). [4]
- Challenge:** TC and ETC methodologies require independent errors between datasets, which constrains direct comparison between the related products GSMaP ISRO Rain and GSMaP.
- Proposed Solution:** To overcome this limitation, ERA5 reanalysis and CHIRPS are incorporated due to their independent measurement methodologies. The study analyzes two triplets: (GSMaP ISRO Rain, CHIRPS, ERA5) and (GSMaP, CHIRPS, ERA5) using TC and ETC techniques.
- Outcome:** This approach enables indirect comparison of GSMaP ISRO Rain and GSMaP through their relationships with ERA5 and CHIRPS. Additionally, the resulting merged products from each triplet potentially offer enhanced precipitation estimates for India, featuring reduced error variance and improved CC with true unknown precipitation.

2. Study Area:

India was divided into seven climatic zones according to the Kppen-Geiger climate classification [2, 3]. Here, we discuss the (Aw) Tropical, savannah region as it covers major portion of peninsular India.

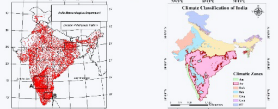


Figure 1: IMD Gauge locations [1] Figure 2: Climate Classifications (India)

3. Data Used:

Table 1: Data and their sources

Dataset	Spatial Resolution	Temporal Resolution	Units	Source
GSMaP	0.1°x0.1°	Hourly	mm/hr	JAXA
ERA5	0.25°x0.25°	Hourly	mm	ECMWF
CHIRPS	0.05°x0.05°	Daily	mm/day	UCSR
GSMaP ISRO	0.1°x0.1°	Hourly	mm/hr	ISRO

- Data Download Time period: 2018 to 2022 (JJAS).
- All data were spatially resampled to 0.25° and temporally to daily.

4. Methodology:

- Assumptions Considered:
 - Linear relation between unknown true precipitation and each dataset.
 - Errors in input are independent.
 - Errors in the three input measurements are uncorrelated.
 - Expected value of errors is zero.

II. Triple Collocation (TC) & Extended Triple Collocation (ETC):

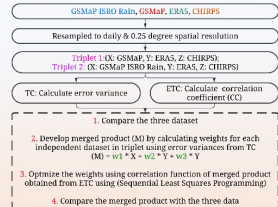


Figure 3: Flowchart of work

5. Results:

a. Extended Triple Collocation with Triplet 1 (GSMaP, ERA5 and CHIRPS):

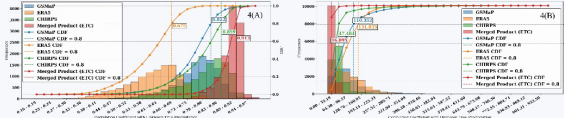


Figure 4: Histogram with CDF of CC (A) and error variance (B) of Triplet 1 & merged product with unknown true precipitation

Comparing (GSMaP, ERA5 and CHIRPS):

- Error Variance:** CHIRPS had least, while ERA5 had highest.
- Correlation:** CHIRPS had highest, while ERA5 had least.
- Performance:** CHIRPS > GSMaP > ERA5

◆ Merged product using ETC had least error variance and the highest Correlation CC.

b. Extended Triple Collocation with Triplet 2 (GSMaP ISRO Rain, ERA5 and CHIRPS):

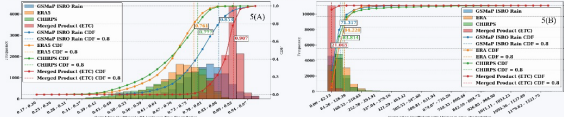


Figure 5: Histogram with CDF of CC (A) and error variance (B) of Triplet 2 & merged product with unknown true precipitation

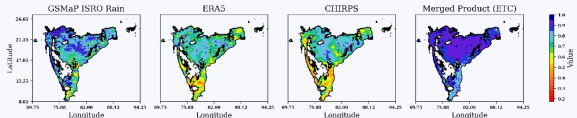


Figure 6: Scatter plot of CC of Triplet 2 & merged product with unknown true precipitation

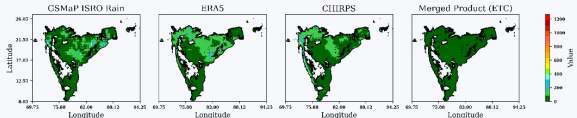


Figure 7: Scatter plot of error variance of Triplet 2 & merged product with unknown true precipitation

Comparing (GSMaP ISRO Rain, ERA5 and CHIRPS):

- Error Variance:** GSMaP ISRO Rain had least, while ERA5 had highest.
- Correlation:** GSMaP ISRO Rain had highest, while ERA5 had least.
- Performance:** GSMaP ISRO Rain > CHIRPS > ERA5

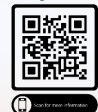
◆ Merged Product using Extended Triple Collocation had least Error Variance and the Highest Correlation Coefficient

6. Conclusion:

- GSMaP ISRO Rain > CHIRPS > GSMaP > ERA5.**
- ETC enabled comparison of satellite precipitation products without ground data, indirectly assessing GSMaP ISRO Rain versus GSMaP.
- Merged product developed through ETC methodology outperformed individual datasets in CC and error variance with unknown true precipitation.
- The best merged product combines GSMaP ISRO Rain, CHIRPS, and ERA5.
- GSMaP ISRO Rain generally outperforms GSMaP in (Aw, Am, Bsh, Cwa, Cwb), but results are mixed in the Bwh and ET climatic regions.

7. References:

- Abhigyan, S., Mitra, A. K., Mishra, I. M., Patil, D. S., Rajagop, R. N., & Rao, S. (2015). Comparison of TRMM-3B42 version 6 and 7 precipitation products with gauged data over India for the different seasons period. *Journal of Hydro-meteorology*, 16(1), 146-162.
- Chakraborty, S., & Chakraborty, S. S. (2018). Comparison of reanalysis of rainfall multiplied with algorithm enhanced and TRMM 3B42 V7 product across different climatic regions in India using satellite measurements. *International Journal of Advanced Research*, 10(1), 1-10.
- Choi, G., Jung, S., Wang, H., & Park, J. (2021). A data-driven framework for improved precipitation estimation (1979-2017) and future (2020-2100) Kppen-Geiger climate classification and bioclimatic variables. *Earth System Science Data Discussions*, 2021, 1-21.
- Wu, J., Wang, S., Sun, J., Tang, S., Liu, Y., Tang, X., & Zhou, F. (2020). An Improved Triple Collocation Method With Measurement Covariance for Near Global and Precipitation Types. *Geophysical Research Letters*, 47(18), e2020GL089733.



8. Acknowledgment:

- I extend my sincere gratitude to Dr. Pierre Kirsteiler, Associate Professor, University of Oklahoma School of Meteorology / Civil Eng. and Env. Science for his invaluable insights and constructive feedback.
- I am thankful to IMD, CHIRPS (UCSR), and ERA5 (ECMWF) for providing open-access data crucial to this research.
- This work was supported by IIT Hyderabad funding (Project No. SG/HIT/HF33/2023-24/SG-162).
- I appreciate the opportunity provided by IPWG and the conference organizers to present this research.

Thank You.
For more discussion.
I invite you to my poster:

10.22