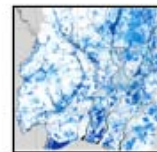
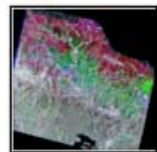
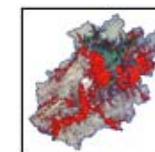
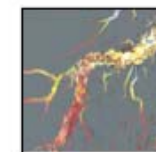
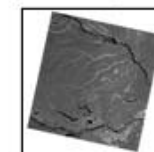
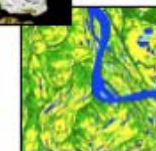
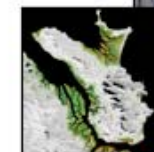
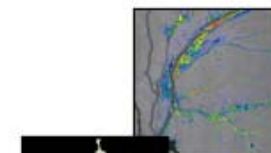
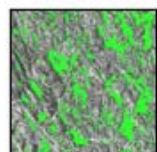
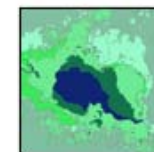


Wetlands issues



Wetland Theme issues

- ScanSAR 46-day mosaics key for inundation mapping applications
 - *Every cycle (46-days), not gap-filled*
 - *Not all ScanSAR areas need to be processed. JAXA processing “on demand” based on the data request input from the K&C science team members*
 - *JAXA time schedule for the ScanSAR mosaic generation?*

The logo for the Advanced Land Observing Satellite (ALOS) program, featuring the letters 'ALOS' in a white, serif font against a dark blue background.A banner for the K&C Initiative, featuring a satellite image of a wetland area with a river network. The text 'K&C Initiative' is in a white, serif font, and 'An international science collaboration led by JAXA' is in a smaller, white, sans-serif font below it.

9th INTECOL International Wetlands Conference

Orlando, Florida, US, 3-8 June, 2012

Special session: *Mapping and Monitoring Large Wetland Systems and their Biophysical Properties with Earth Observation Satellite Imagery*

Organised by: Maycira Costa, Lisa Rebelo, and Thiago Silva

Abstracts by: **Friday, December 16, 2011.**

Special journal issue not part of INTECOL, but possible?
Which journal?

Journal of xx Special Issue

- Paper status 2010
 - Lucas et al: *Recent response of mangroves to climatic and sea level change, Gulf of Carpentaria, Australia [ready by September]*
 - Lucas et al: *The potential for recovery of carbon stocks and biodiversity in the Brigalow Belt Bioregion, Queensland, Australia [ready by September]*
 - Rebelo, Seyoum, El Mograhby: *Future changes to the Sudd wetland: the potential impacts of upstream interventions [ready by September]*
 - Longépé, Shimada, Rakwatin, Isoguchi, Uryu: *Decadal change of forests in Sumatra [ready by Sept/Oct]*
 - Humberto de Mesquita: *Proposition of ScanSAR data near real-time monitoring tropical deforestation in Brazil [ready by November]*
 - Hoekman: *Consistent annual forest change monitoring in Borneo*
 - Maycira: *Spatial distribution of geochemically different lakes in the Pantanal (by end of 2010)*

- Maycira 2: Climatic driven spatio-temporal variability of aquatic vegetation in the lower Amazon floodplain (late 2010)
- Silvana: ALOS PALSAR ScanSAR data in the Brazilian Amazon Forest Monitoring System
- Bill Salas: Methane inventory for California using PASAR and MODIS [ready within 2 months]
- Bill: Java avian influenza risk mapping with PALSAR [by Nov]
- John Lowry: Wetlands health of the Alligator rivers region [by Jan/Feb 2011]
- Shimada + Hokudai + JFRC: Estimation of GHG emissions in central Kalimantan caused by peatland subsidence by InSAR [By Jan 2011]
- JAXA team: EORC Global mosaic + classification (2-3 papers)
- Shaun Quegan: Deforestation monitoring in central Sumatra
- Chapman: Orthorectification and calibration of ALOS K&C PALSAR mosaic data (end Nov.)
- Kevin Telmer: (end 2010)
- Ake: K&C intro paper (end 2010)
- Ake: K&C Mangrove Watch intro paper
- Philippe: A new river somewhere... (end of 2010)

PALSAR data requests to EORC

- *25m FBD Mosaic data requests*
 - *Use “K&C Mosaic Request” Excel template – available on K&C Wiki within next 2 weeks*
 - *Indicate with 1-deg accuracy the area of interest*
 - *Colour yellow + add number “1”*
 - *Send to z-ALOS-KC@jaxa.jp*
- *ScanSAR mosaic data requests*
 - *Request form under development*
- *Strip data requests*
 - *Use same Excel form that was used in Phase 2*
 - *Send to z-ALOS-KC@jaxa.jp*

Action Items

- *Send suggested TanDEM-X study site (one/K&C team)*
 - *lat/long*
 - *polarisation mode (SP – 30km, DP - 15km) (standard strip length 50 km)*
 - *Focus on test sites with documented changes*
 - *by email to Ake by Oct 31 (all K&C Science Team members)*
- *Journal Special Issues*
 - *Forest Ecology & Management (Richard)*
 - *Wetlands Journal (Lisa, Maycira, Ake)*
 - *Updated paper titles – by email to Ake – to be posted n K&C Wiki (all K&C Science Team members)*
- *Standard form for procedure to collect in situ data – on the K&C Wiki (Richard)*
- *PALSAR data requests to JAXA (all K&C Science Team members)*
 - *Provision of request forms to Science Team (JAXA / Ake)*

Action Items

- *Brochure on “State of the environment as observed by ALOS” (Richard)*
 - *Sudd wetlands*
 - *Peat swamps SE-Asia*
 - *Regrowth/clearings in Australia*
 - *Mangrove*
 - *Deforestation in the Amazon/Rondonia*
 - *Logging in Siberia*