



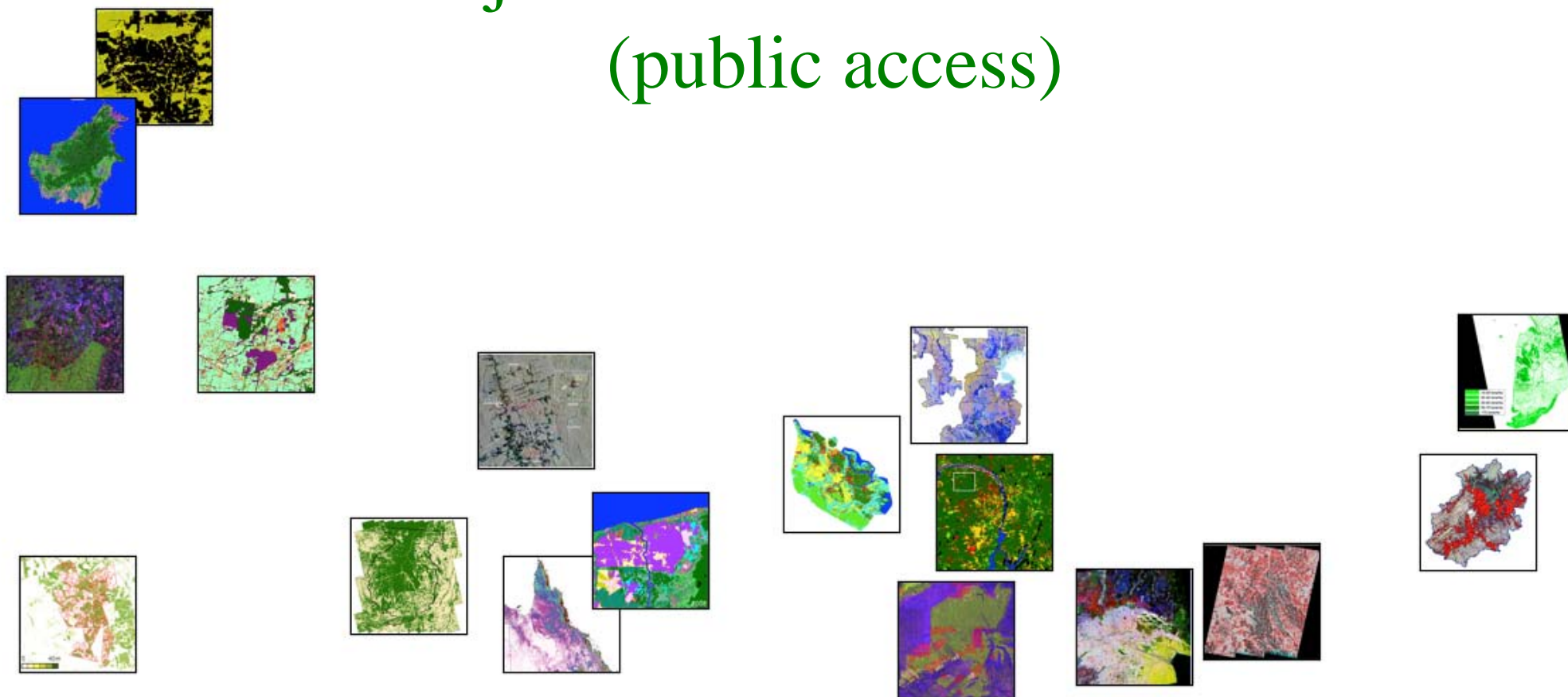
ALOS

K&C Initiative
An international science collaboration led by JAXA

K&C project issues

KC#18

Project information resources (public access)



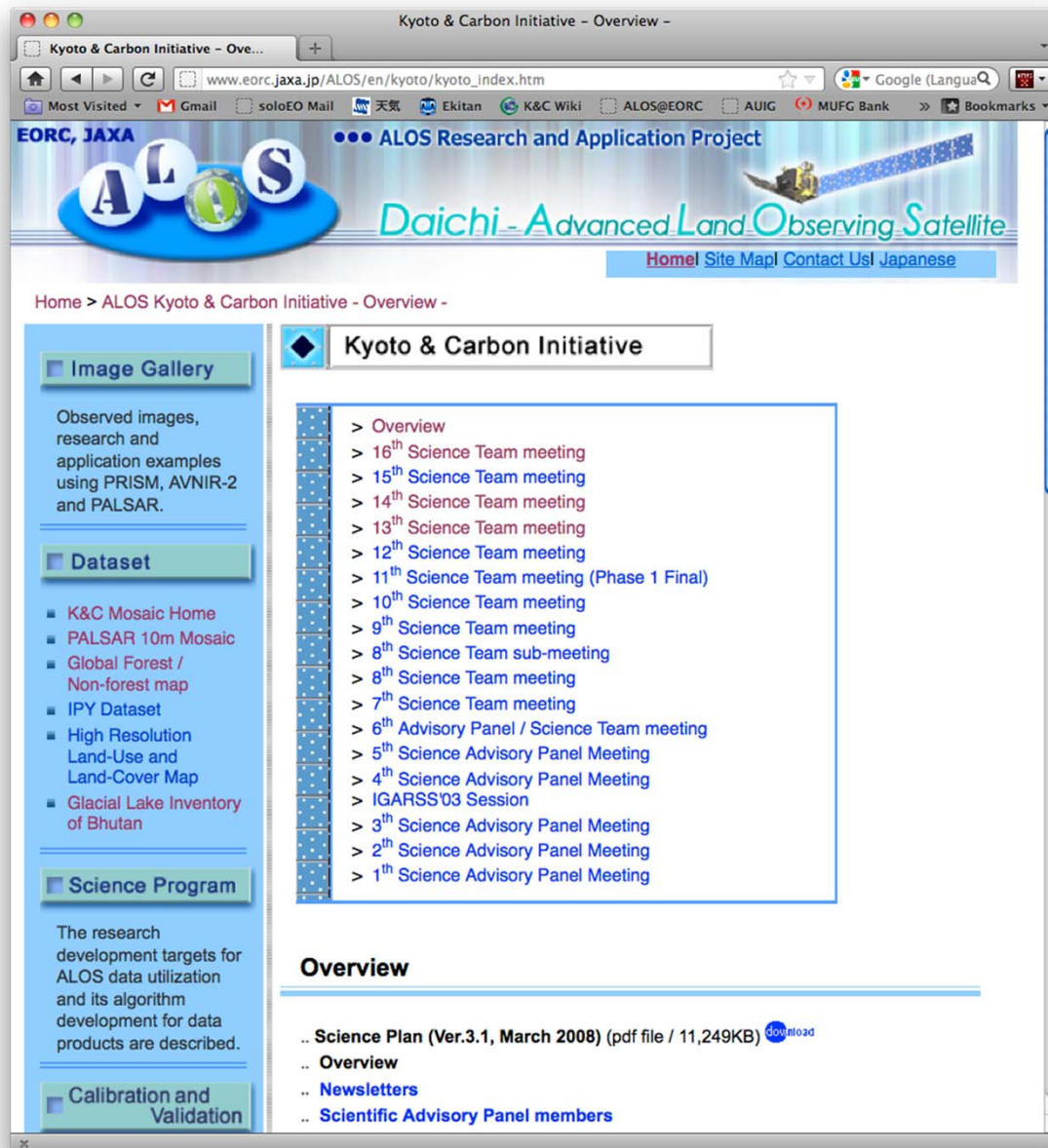
ALOS

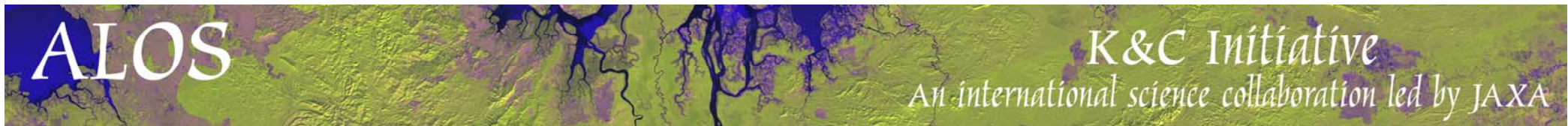
K&C Initiative
An international science collaboration led by JAXA

JAXA EORC K&C Homepage

- K&C background information
- Agendas and **presentation material** available from all previous K&C Science Team meetings (KC#1 – KC#17)
- PALSAR systematic observation strategy (BOS)

http://www.eorc.jaxa.jp/ALOS/en/kyoto/kyoto_index.htm



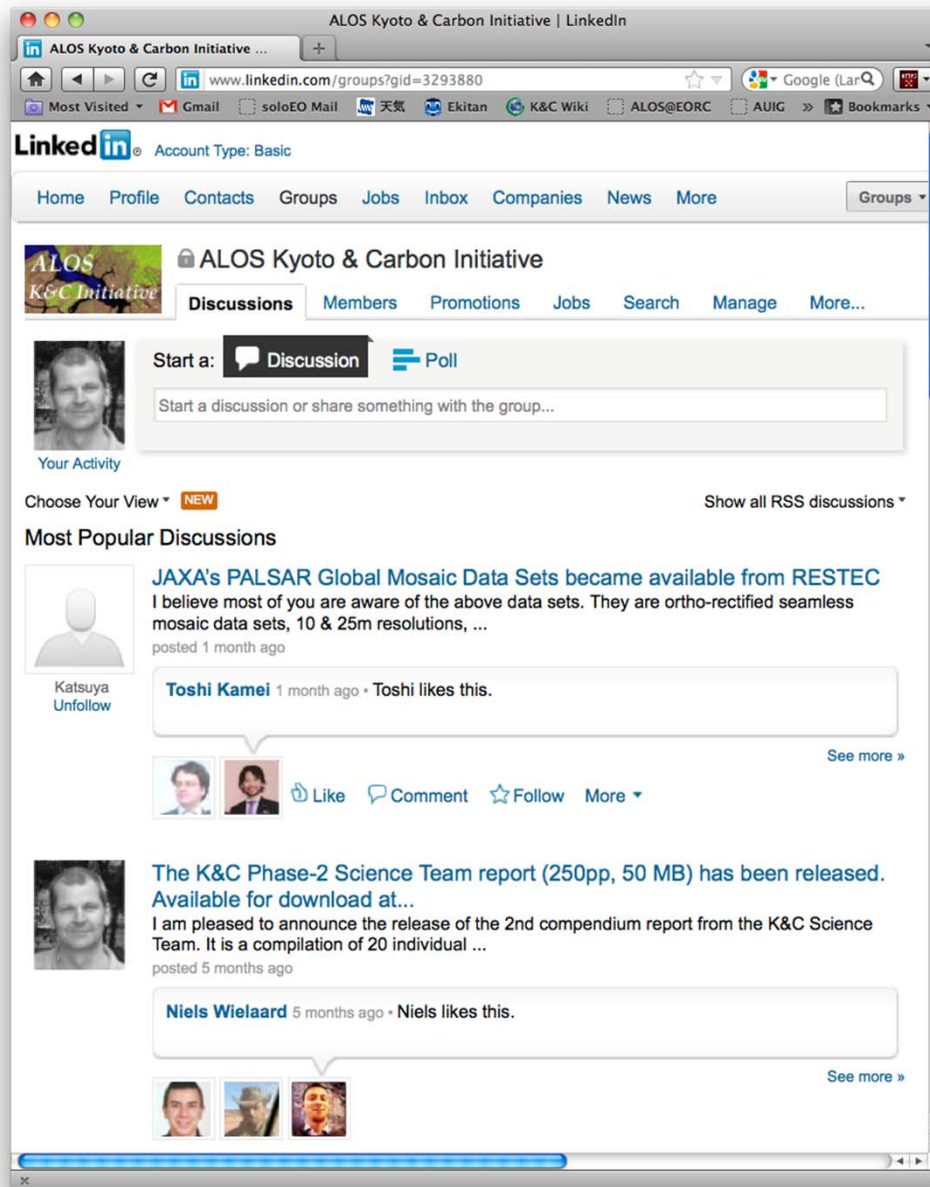
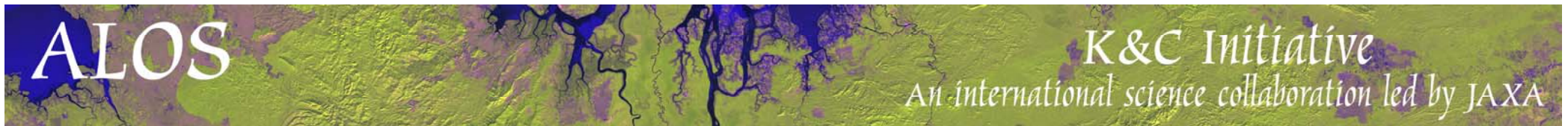


JAXA EORC K&C Mosaic Homepage

K&C 50 m and 500 m resolution
mosaic products online

- 50 m FBD and FBS mosaics
- 500 m browse mosaics (each 46-day cycle)
 - FBD/FBS
 - ScanSAR

http://www.eorc.jaxa.jp/ALOS/en/kc_mosaic/kc_mosaic.htm



Interest group on the [LinkedIn](#) network with news on publications and other events.

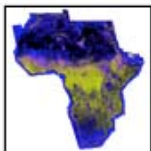
Aim to disseminate K&C info to broader community.
148 members thus! (+33 since KC#17!)

Group name:
[ALOS Kyoto & Carbon Initiative](#)

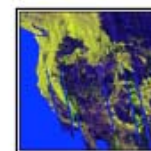
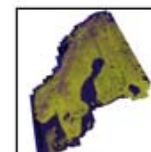
Request membership directly at group page at
<http://www.linkedin.com>
OR send email to
ake.rosenqvist@soloEO.com

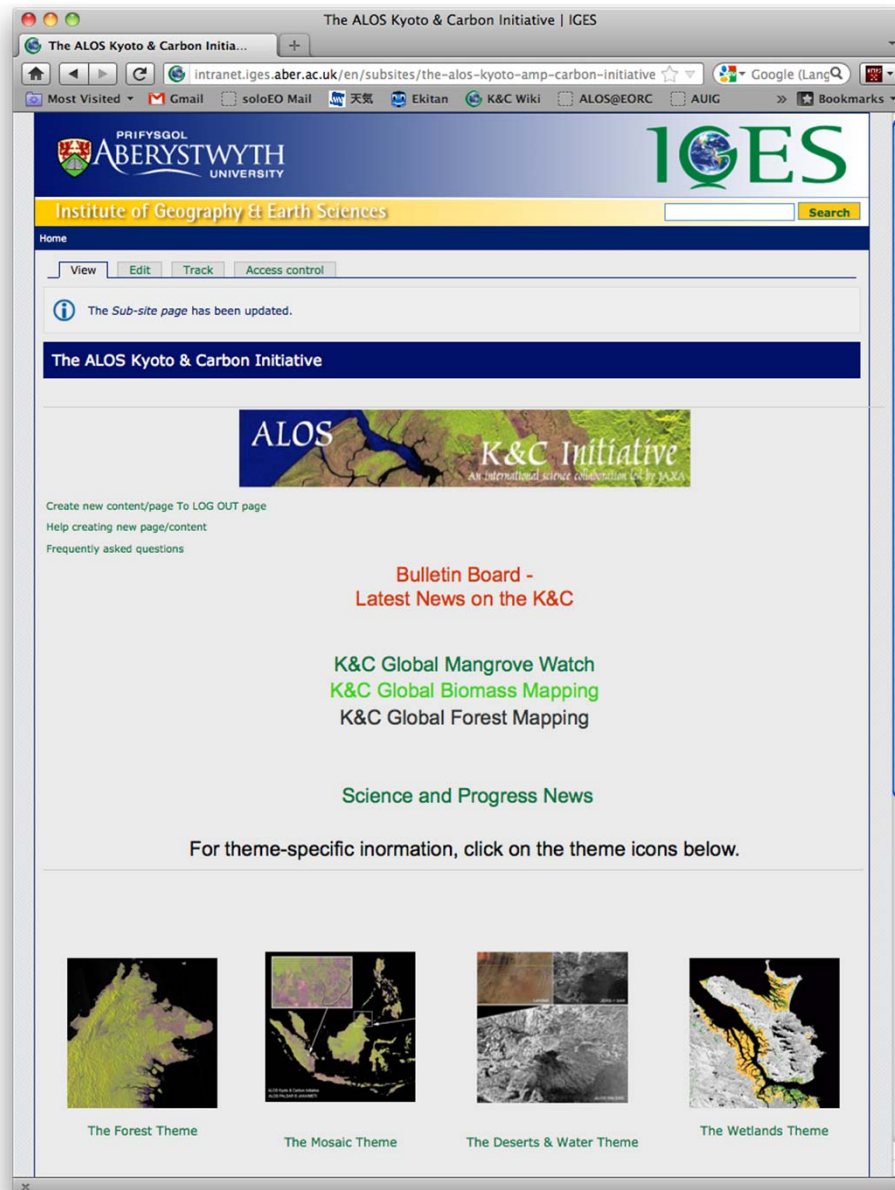
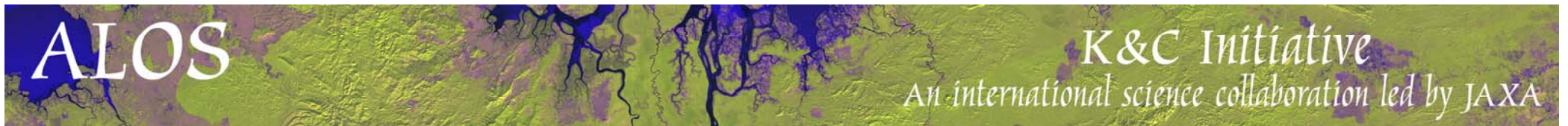
ALOS

K&C Initiative
An international science collaboration led by JAXA



Project information resources (project team access)





Project info resources

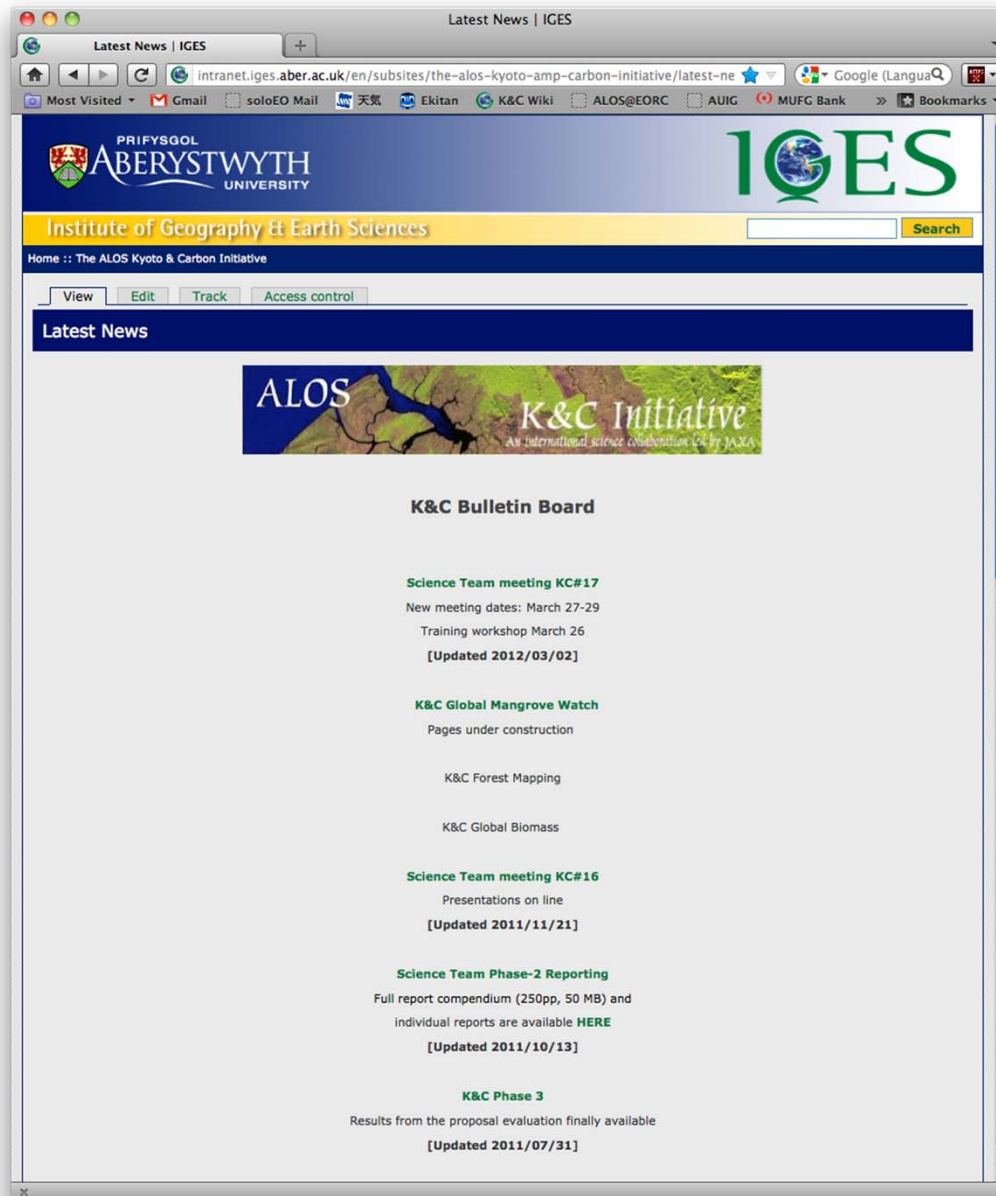
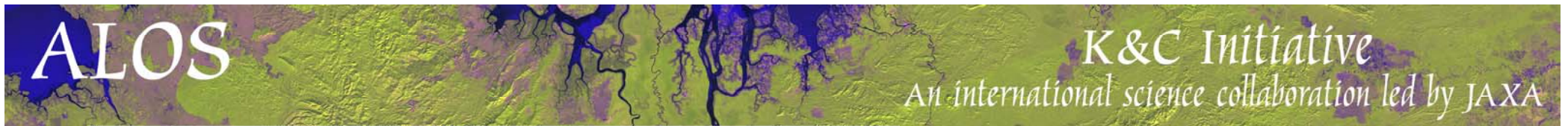
The K&C Wiki Site

Hosted by Aberystwyth Univ.

A place for exchange of project information and data. Improved usage during Phase 3

<http://intranet.iges.aber.ac.uk/en/subsites/the-alos-kyoto-amp-carbon-initiative/latest-news>

Log in ID: **ALOS-KC**
Passwd: **ALOS-KC**

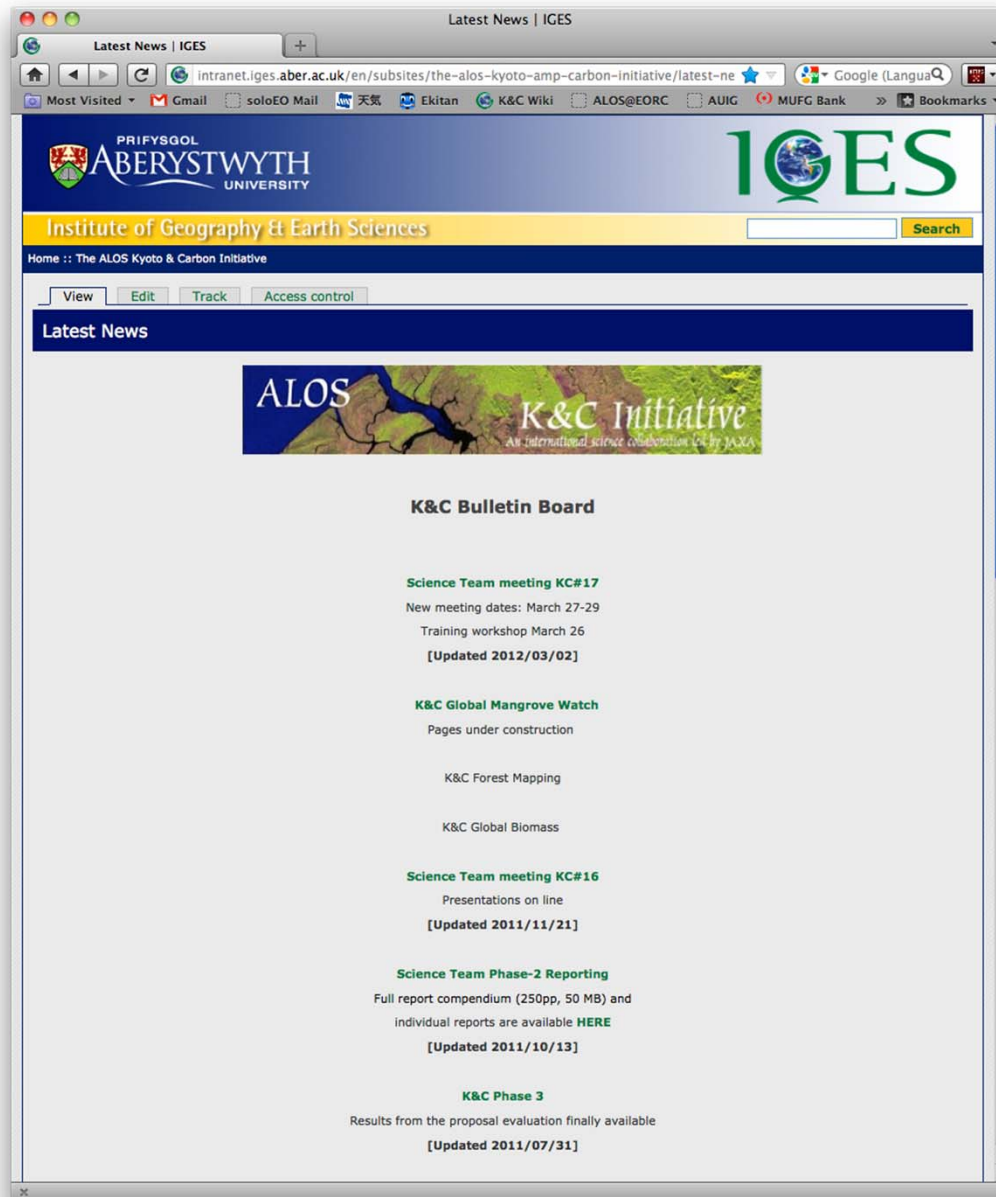
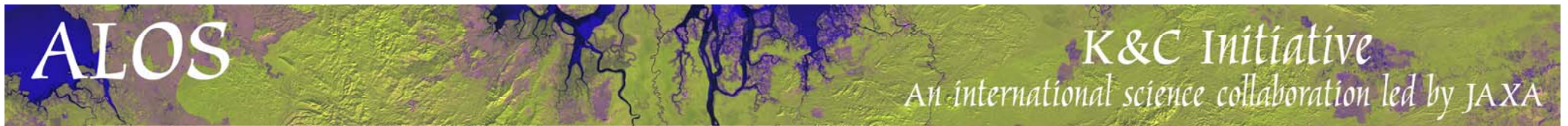


Project info resources

The K&C Wiki Site
Bulletin Board

Keep an eye on it!
Main place for sharing of info
from the K&C secretariat (=me)

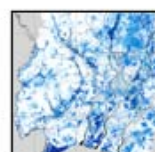
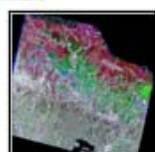
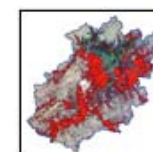
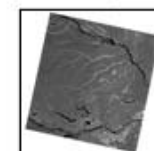
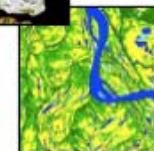
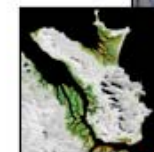
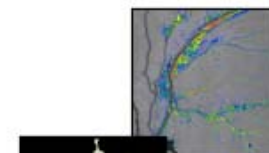
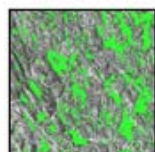
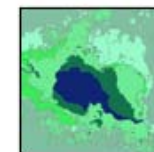
<http://intranet.iges.aber.ac.uk/en/subsites/the-alos-kyoto-amp-carbon-initiative/latest-news>



Establishment of **K&C library** on the K&C Wiki

Please provide **PDF copies** of your published papers (email to Ake)

Reports and Publications



Reports and publications

K&C Science Plan, v.3.1 (March 2008, 105 pp)

*K&C Science Team Reports **Phase 1** (Jan 2010, 230 pp)*

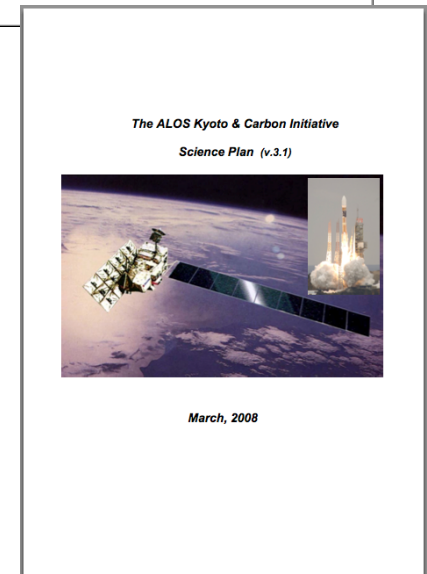
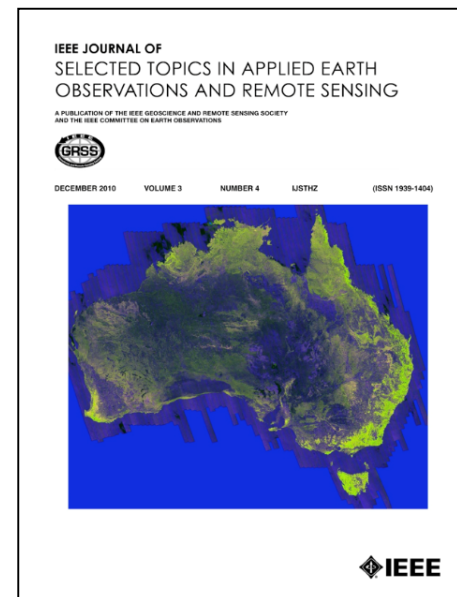
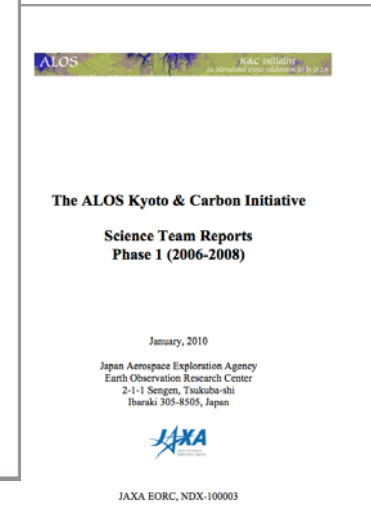
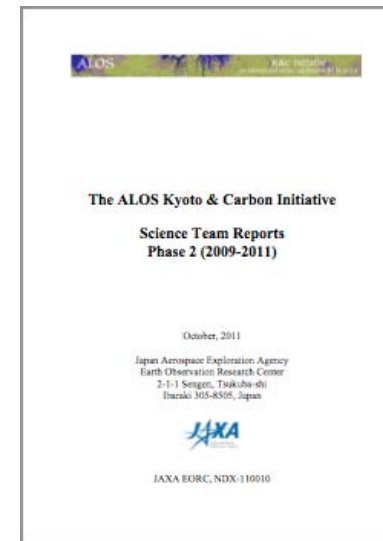
*K&C Science Team Reports **Phase 2** (Oct 2011, 250 pp)*

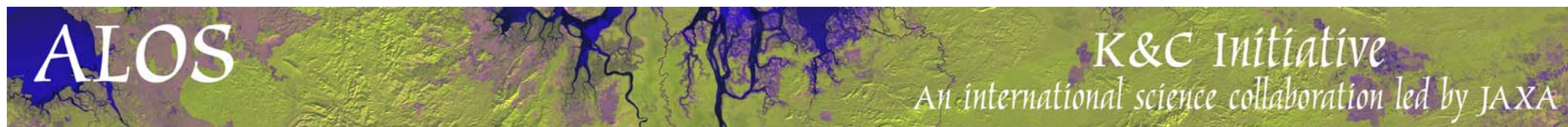
*IEEE Journal on Special Topics in Earth Observation
and remote Sensing (J-STARS)*

Vol. 3 No.4, Dec. 2010

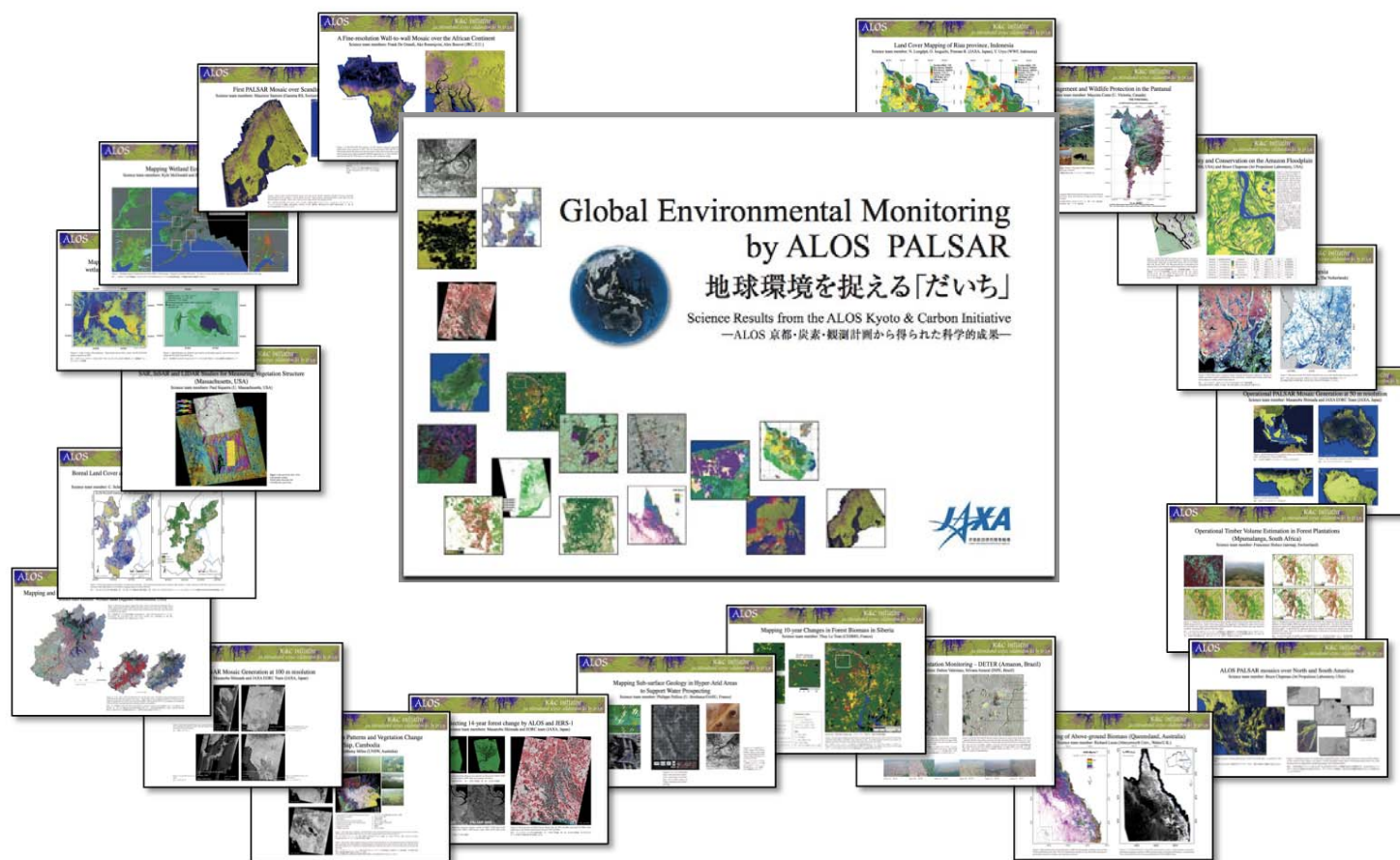
- Special Issue on K&C: Phase 1 results
- 10 papers from Forestry, Wetlands, Desert and Mosaic Themes

*All reports and individual papers available
on the EORC K&C Homepage
and the K&C Wiki*





Illustrated **K&C Booklet** (85 pp) published Sept. 2010
35+ project descriptions in English and Japanese



Digital copy (PDF) available at **K&C Homepage** and **K&C Wiki**

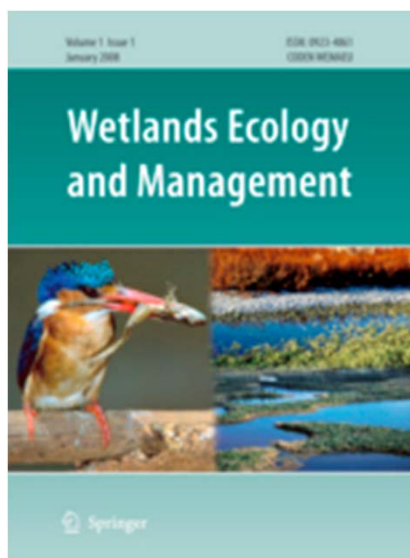
Remote Sensing of Environment K&C Special Issue



- Publication foreseen in late 2013
- 16 papers contributed to date
- Review process ongoing
- Submission has been extended to accommodate late submissions. Last chance this week - closes Nov 10 (Sunday)

Wetlands Ecology & Management

Wetlands Special Issue

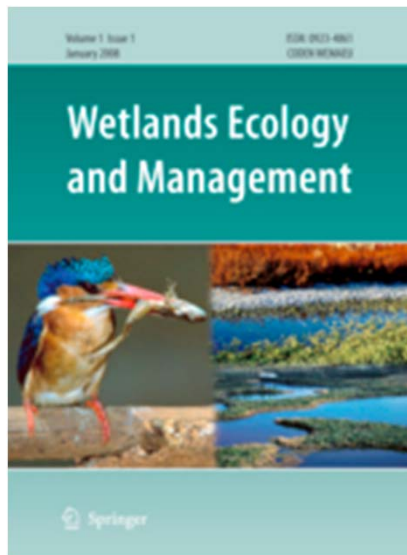


#	Name	Surname	Institution
1	Bruce	Chapman	JPL
2	Maycira	Costa	U.Vic
3	Laura	Hess	UCSB
4	Richard	Lucas	Aber. Univ
5	Kyle	McDonald	CUNY
6	Anthony	Milne	UNSW
7	Lisa	Rebelo	IWMI
8	Bill	Salas	AGS

Others?

Wetlands Ecology & Management

Wetlands Special Issue

**Editor-in-Chief:**

Johan F. Gottgens

University of Toledo, Toledo, OH, USA

Charles S. Hopkins Jr.

University of Georgia, Athens, GA, USA

Eric Wolanski

Australian Institute of Marine Sciences, Townsville,
QLD, Australia

Proposed time schedule:

- Authors to submit brief abstracts to Ake by November 25 (TBC)
- Late Nov. Send abstracts to WEM editors for assessment
- If ok, submissions by ? Jan 2013?
- Assignment of guest editors