

Global Land Cover Mapping



Ryutaro Tateishi
Center for Environmental
Remote Sensing(CEReS)
Chiba University

E-mail: tateishi@faculty.chiba-u.jp

URL: <http://www.cr.chiba-u.jp/tateishi/home.htm>

Topics

- **Proposed global land cover products in K & C initiative**
- **Trend of global land cover mapping**

Proposed global land cover products in K & C initiative

Initially planned product:

- GLI 250m global land cover data**

Candidate of revised products:

- GLI 1km global land cover data
(April – October 2003)**
- Global percent tree cover data
by GLI / MODIS and QuickBird
(proposing in Global Mapping project)**

Existing global land cover data

- **IGBP-DISCOVER**

AVHRR 1992

IGBP legend

- **Univ. of Maryland**

AVHRR 1992

Maryland legend

- **Boston Univ.**

MODIS 2000

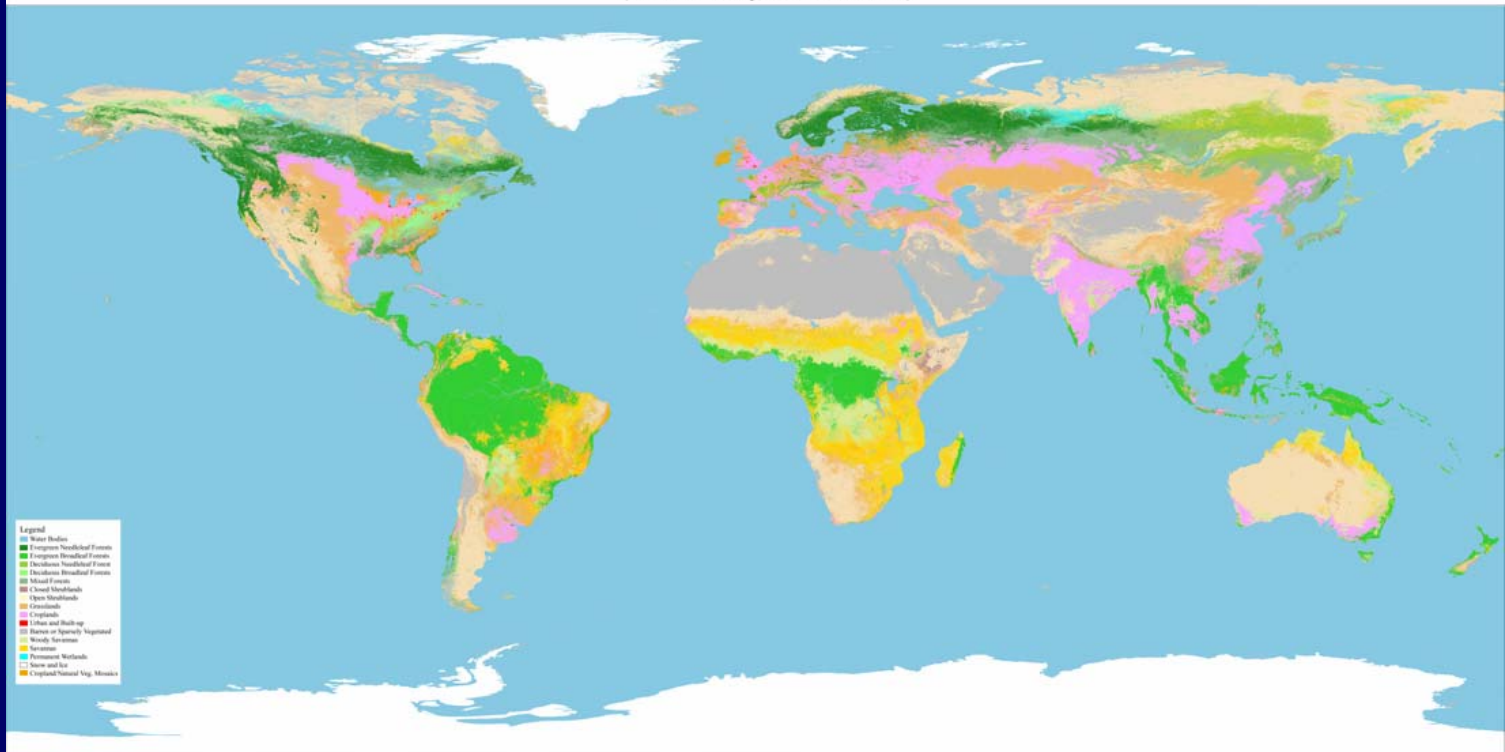
IGBP legend

- **GLC2000 by JRC**

SPOT/VEGETATION 2000 JRC legend

Global Land Cover Map

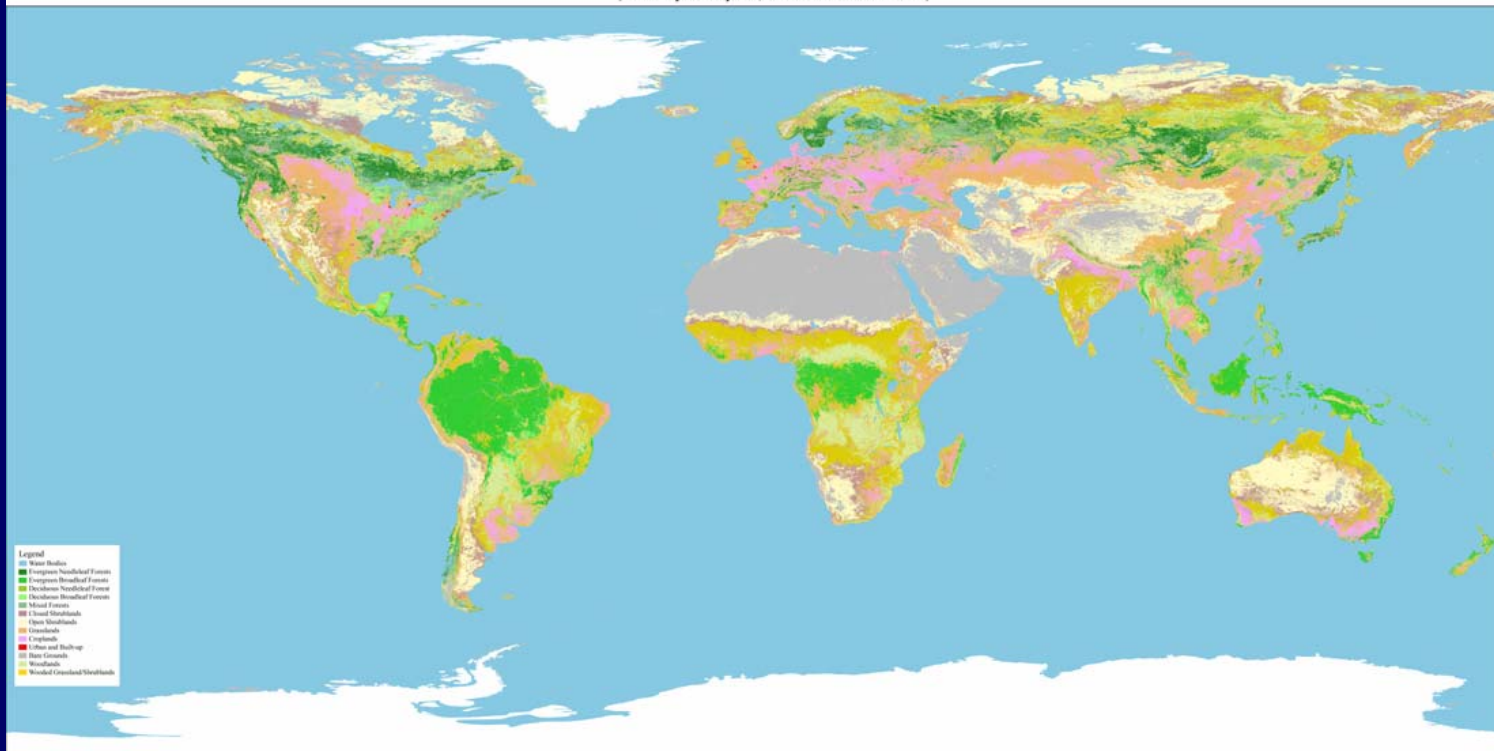
(Boston University, MODIS 2000-2001)



Boston U

Global Land Cover Map

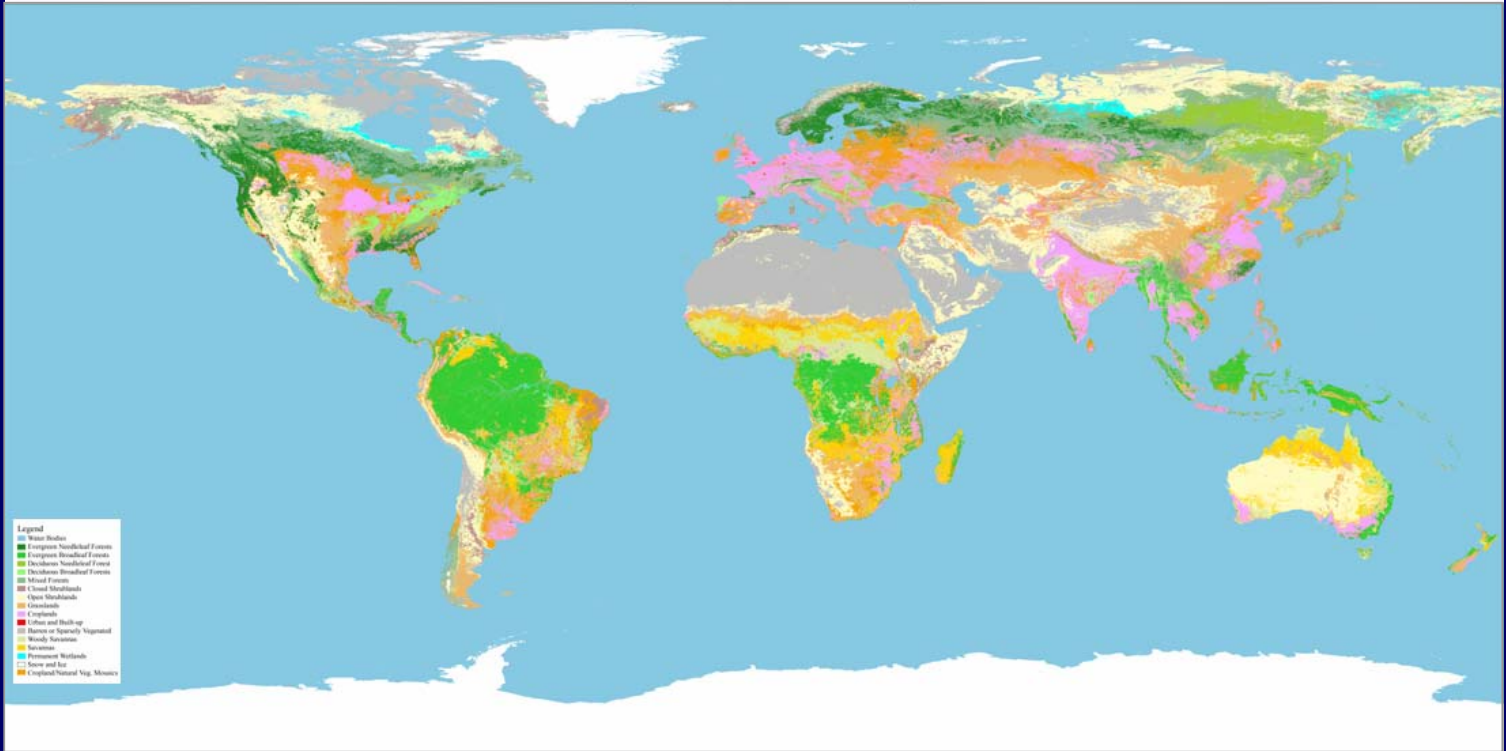
(University of Maryland, NOAA AVHRR 1992-1993)



U Maryland

Global Land Cover Map

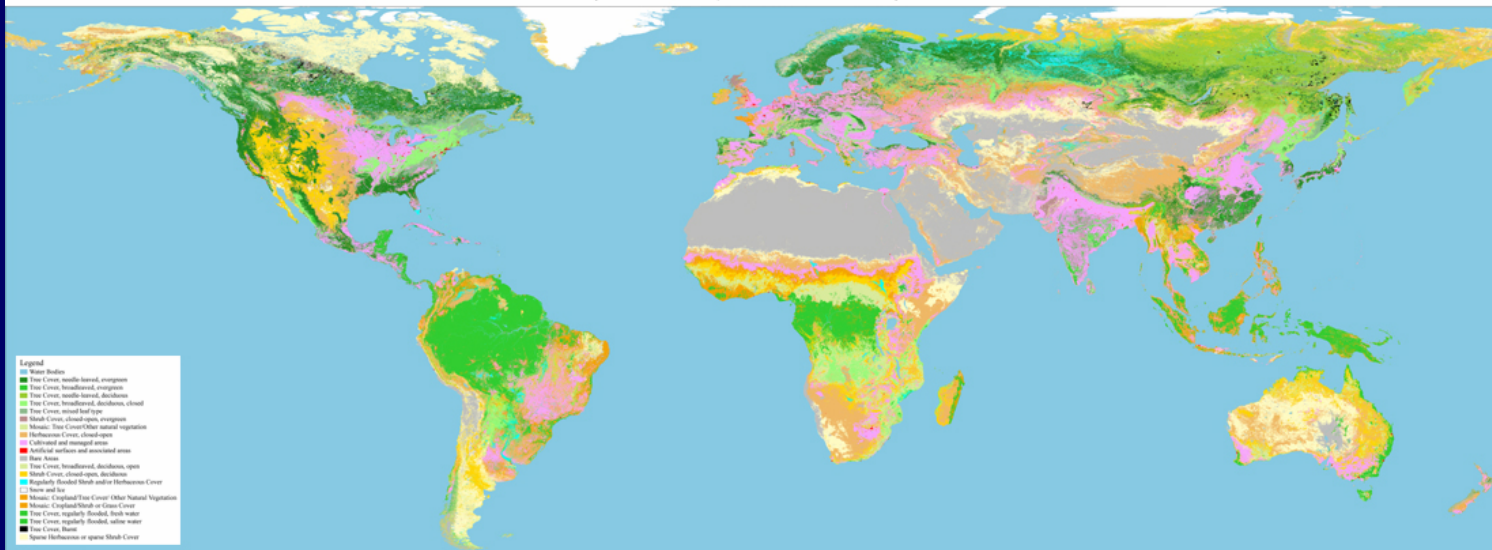
(IGBP Version 2, NOAA AVHRR 1992-1993)



IGBP DISCover

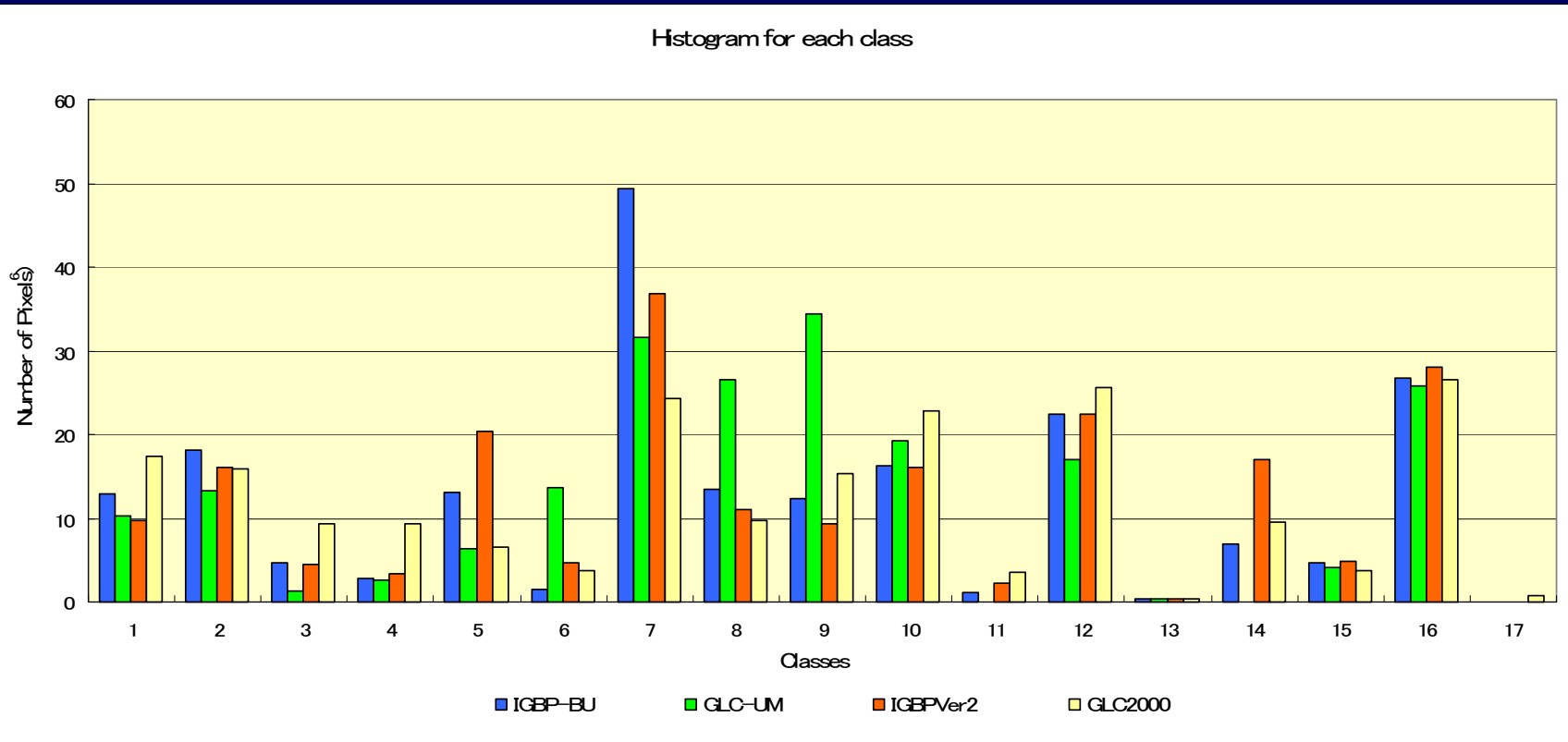
Global Land Cover Map

(GLC 2000-JRC EC, SPOT VEGETATION 2000)



GLC2000

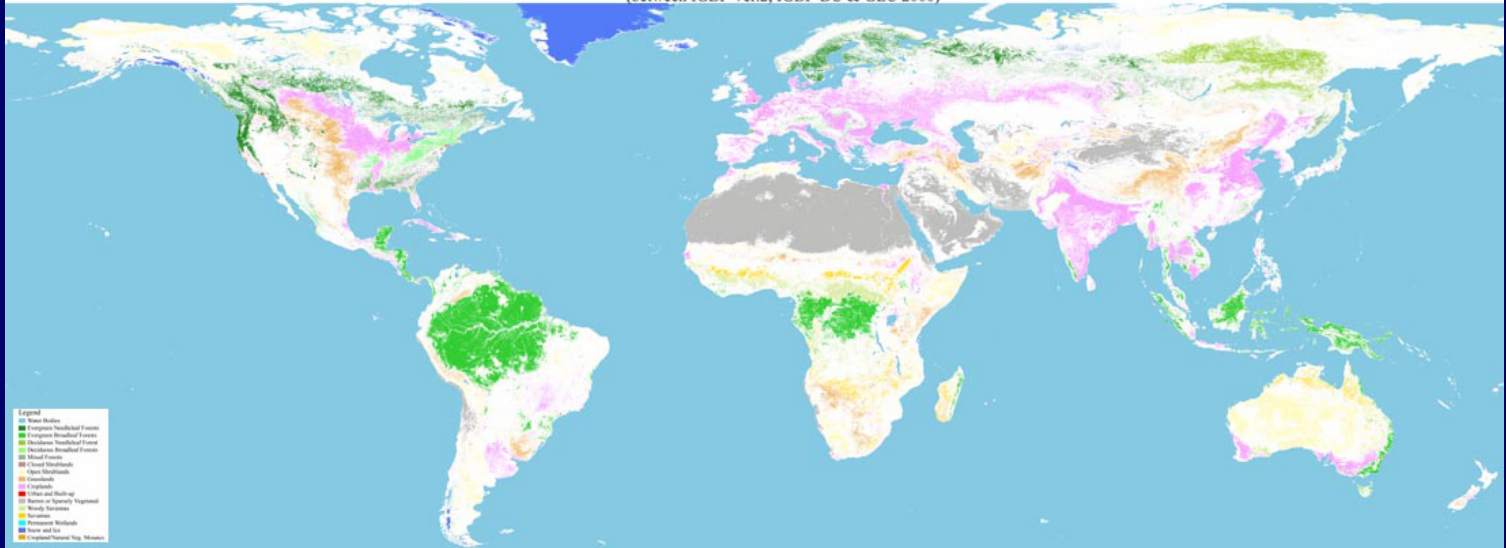
Comparison on area coverages of land cover types in four global land cover maps



Boston U., U.Maryland, IGBP, GLC2000

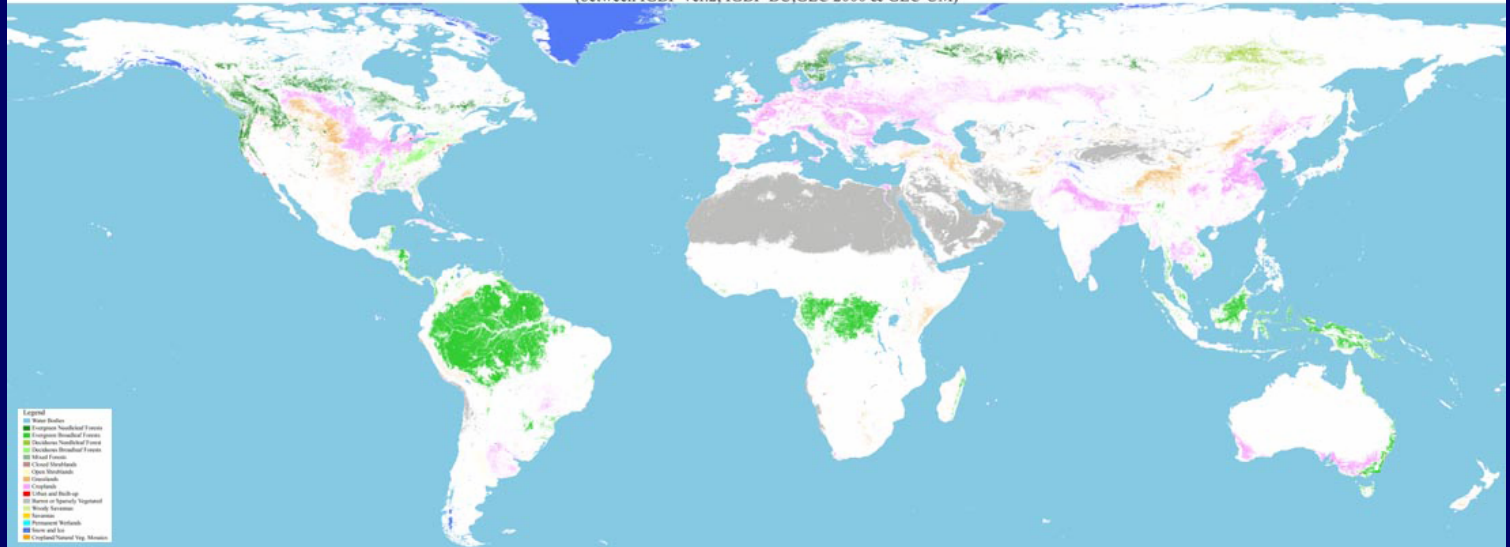
Common Areas

(between IGBP Ver.2, IGBP-BU & GLC 2000)



Common Areas

(between IGBP Ver.2, IGBP-BU, GLC 2000 & GLC-UM)



Global forest cover data

- **Forest cover map**

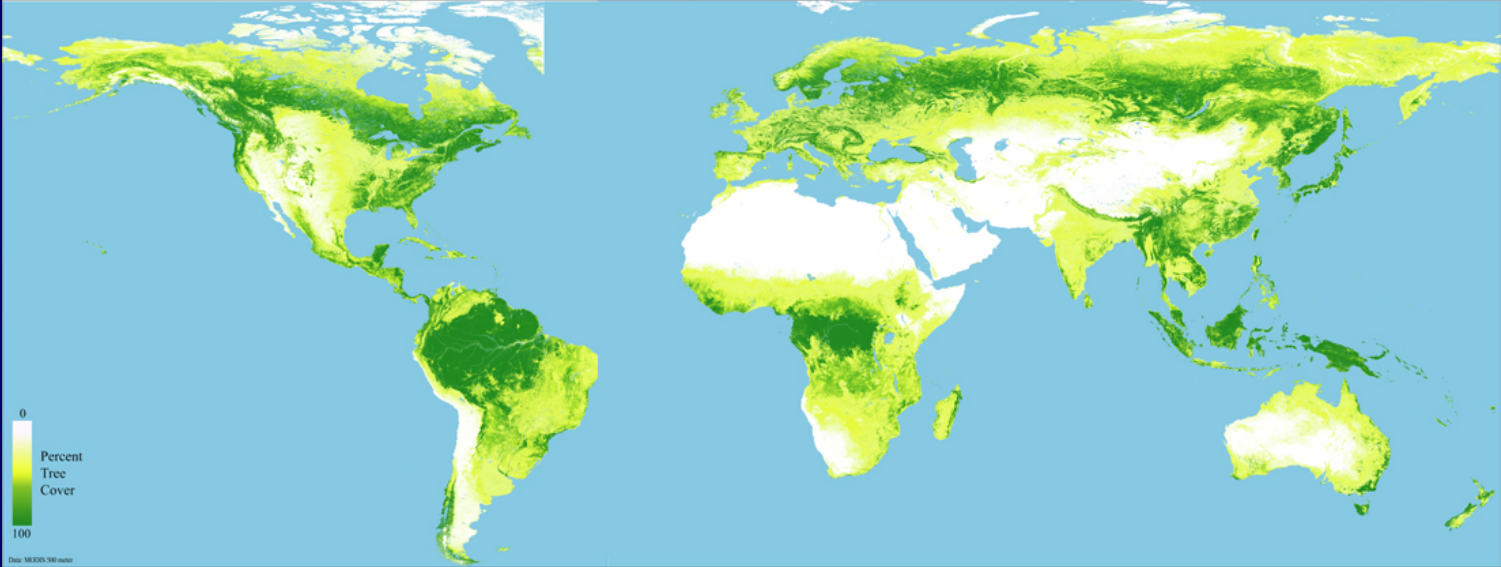
FRA2000 by FAO/USGS

- **Percent tree cover data**

Univ. of Maryland

Global Percent Tree Cover Map

(University of Maryland, MODIS 2000-2001)



Ongoing global land cover mapping projects

- **USGS initiative**

MODIS 500m

- **GLOBECOVER**

by ESA and JRC

ENVISAT/MERIS 300m

- **JAXA initiative**

ADEOS-II / GLI 250m ----- ?

- **Boston Univ.**

MODIS 1 km IGBP 17 class every 6 months

- **Global Mapping project phase 2**

TBD

Proposed global land cover products in K & C initiative

Initially planned product:

- GLI 250m global land cover data**

Candidate of revised products:

- GLI 1km global land cover data
(April – October 2003)**
- Global percent tree cover data
by GLI / MODIS and QuickBird
(proposing in Global Mapping project)**

Land Cover Ground Truth sites

