

Working Group compositions

WG #1 - GLI products

Steve Running (WG leader)

Takeo Tadono

John Townshend

WG #2 - PALSAR mosaics

Bruce Chapman (WG leader)

Masanobu Shimada

WG #3 - Forest & biomass change

Craig Dobson (WG leader)

Josef Cihlar

Tony Milne

Paul Siqueira

WG #4 - Wetlands & rice paddy

Laura Hess (WG leader)

Bill Salas

Doug Alsdorf

John Melack

WG #5 - Boreal products

Kyle McDonald (WG leader)

Larry Smith

J. C. Shi

Working Group #1- GLI products

Special issues

Potential products

- 250 m Land Cover Classification [TCO req.]
- 250 m continuous fields [TCO req.]
- LAI, NPP, albedo??
- Image products
 - cloud-free composites
 - image mosaics
- 1 km products?
- map projections

Synergy with MODIS-1/2

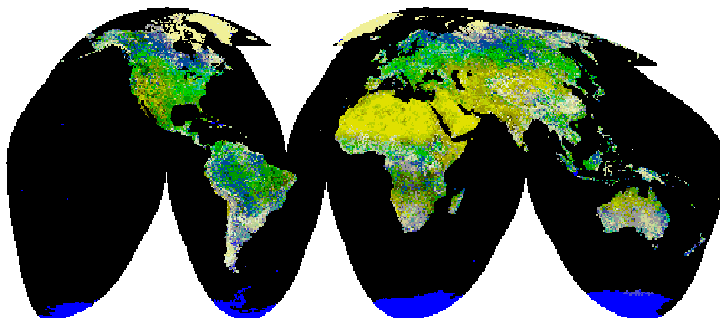
- Strengths of MODIS and GLI
- Avoid duplication

Tentative lead organisations

- UMD
- UMT
- Chiba Univ.
- ...

Time schedule

- ADEOS-II launch: Nov. 2002



IGBP-DIS NOAA AVHRR 1 km LCC

Working Group #2- PALSAR mosaics products

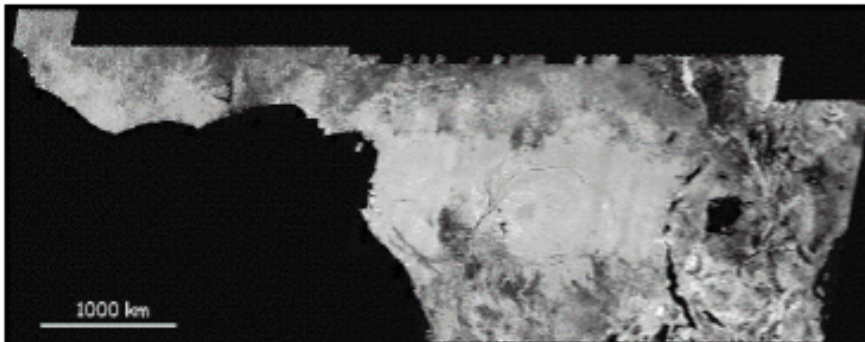
Special issues

Special issues

- NASDA goal: at least one global coverage
- Over which areas can repetitive mosaics be justified?
- Full resolution vs. ScanSAR
- Fine resolution mosaic pixel spacing: 100 m - or finer?
- DEM correction (SRTM? PRISM?)
- Geometric accuracy and validation

Tentative lead organisations

- NASDA EORC
- JPL
- JRC (Siberia, Africa)
- ...



Working Group #3

Forest change and biomass products

Special issues

Forest change products

- detection of change
- spatial quantification

Tentative lead organisation(s)

???

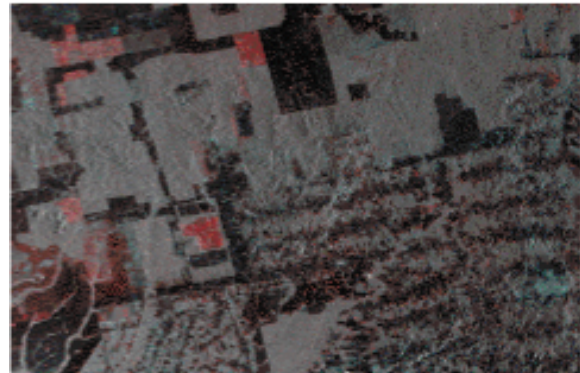
Biomass products

- (incremental) biomass change
- stock inventory (boreal areas?)

No partner - no product!

- Acquisitions - annual
- Product generation
 - global @ 5 yrs(?)
 - hotspots - annual(?)

Note GOFC/TCO product requirements



Working Group #4 - Wetlands and rice paddy

Special issues

Wetlands

- wetlands delineation - global?
- flood duration mapping - regional (which?)
- ADEOS-II/POLDER for wetlands detection

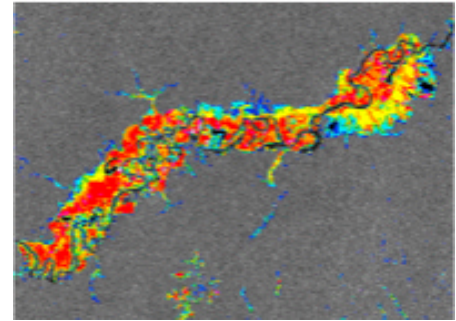
Irrigated rice

- Focus areas?
 - active acreage
 - # crop cycles
-
- More emphasis on ScanSAR?
 - Adequacy of current acq. plan

Note Ramsar wetlands treaty

Tentative lead organisation(s)

- UCSB



Working Group #5

Boreal products

Special issues

Special issues

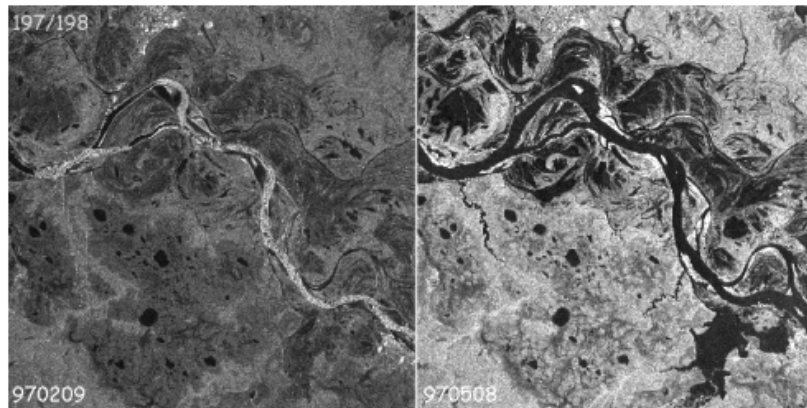
- Freeze/thaw
- Boreal wetlands
- ADEOS-II POLDER for wetlands detection
- Low biomass forest

Sensors:

- PALSAR
- GLI

Tentative lead organisations

- NASA JPL
- UMT?



Feb. 1997

Yenisey river, Russia

May 1997

All Working Groups

Issues to address for each proposed product

Scientific relevance

Target end user

Organisational structure

- Lead organisation(s)
- additional collaborators
- links to user groups

Requirements for realisation

- funding (source?)
- MoU's
- anticipated problems

Level of ambition

- global vs. regional
- one-time vs. repetitive (frequency?)
- demonstration vs. operational product

Regional scale appl.

Key words: Terrestrial Carbon
Environmental Treaties
GOFC/TCO/GTOS etc.

Technical issues

- operational or R/D
- utility of existing JERS data
- importance of SAR/optical synergy
- min. system req (pol., inc.angl., #DT, spatial & radiom. resolution, etc.)
- adequacy of current obs. plan

Product validation

- methodology
- in situ networks?

Data flow

- from data take to final product
- data volumes foreseen
- bottlenecks
- proc. level from NASDA

Time schedule