

The logo for the ALOS satellite mission, featuring the letters 'ALOS' in a white, serif font against a dark blue background.A banner with a green and blue background showing a satellite image of a river delta. The text 'K&C Initiative' is in a white, serif font, and 'An international science collaboration led by JAXA' is in a smaller, white, serif font below it.

K&C Initiative
An international science collaboration led by JAXA

The ALOS PaISAR mission (orbituary)

M. Shimada
JAXA

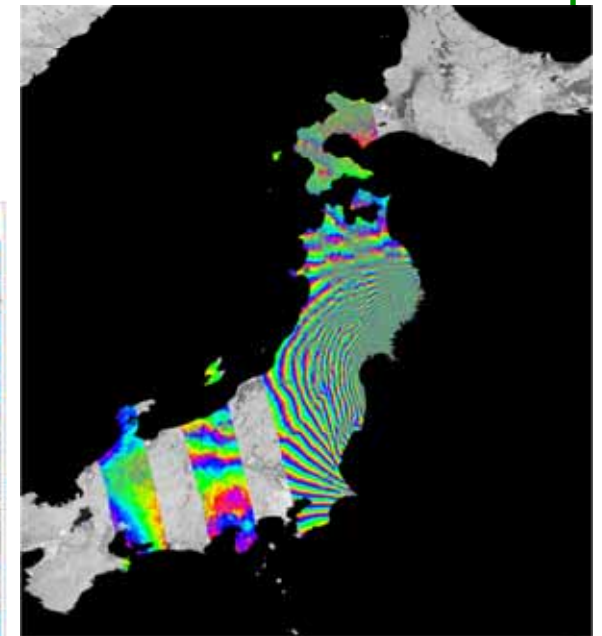
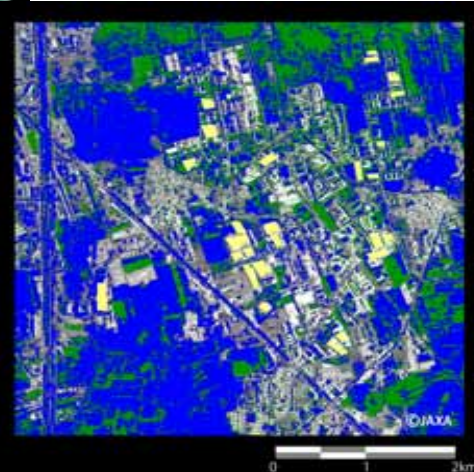
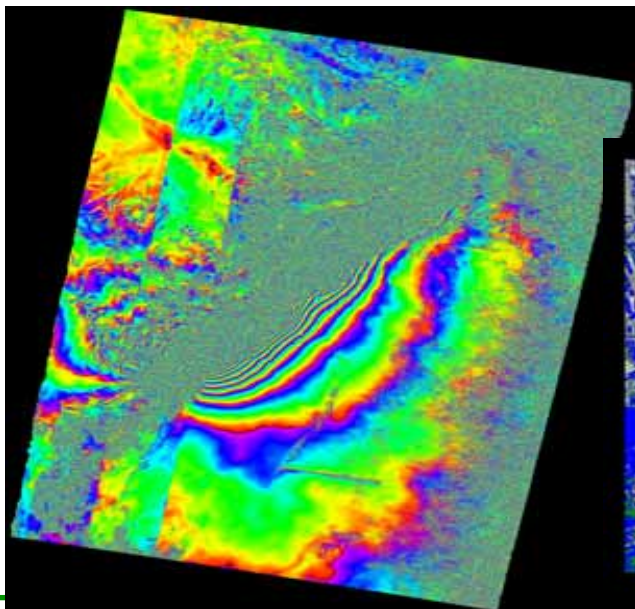
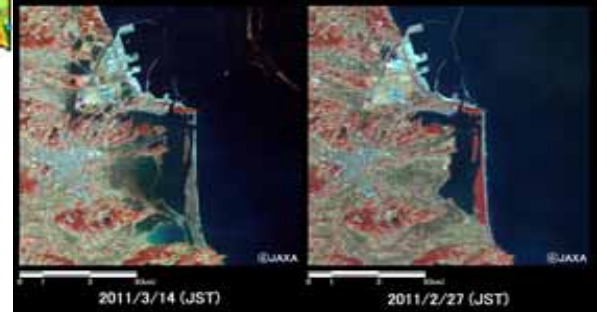
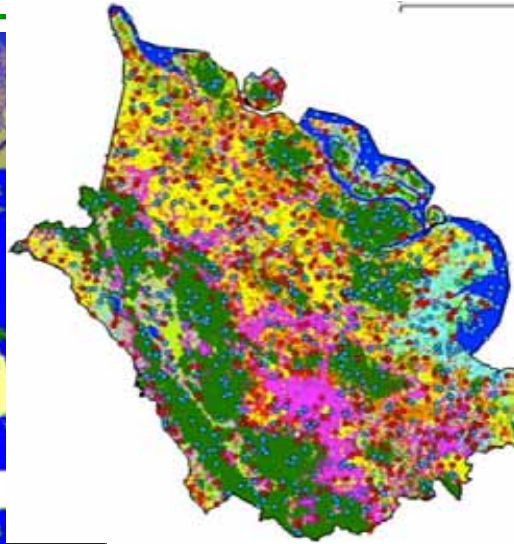
Science Team meeting #16 – Phase 3 Kick-off
JAXA TKSC/RESTEC HQ, Tsukuba/Tokyo, October 17-21, 2011

ALOS-Grの1年間のサマリ

2007 forest/non-forest map

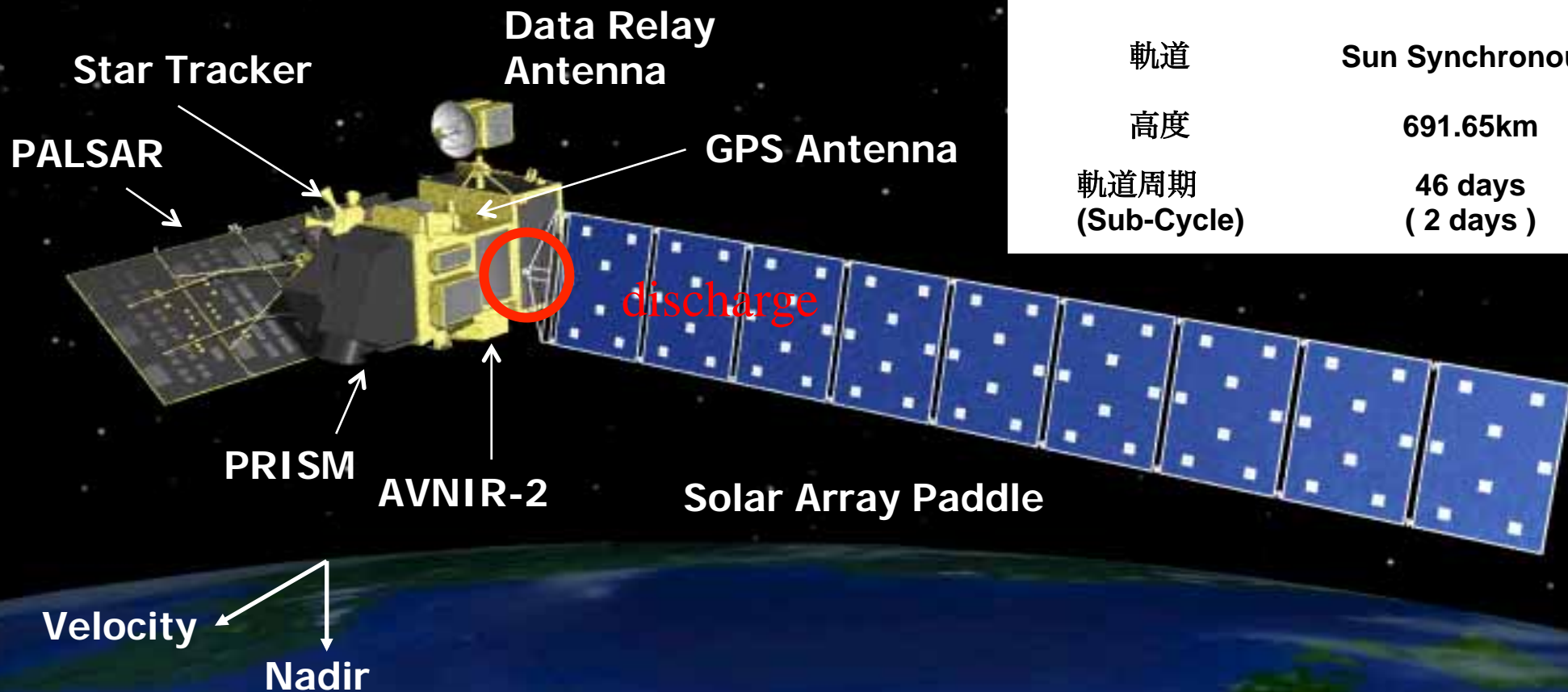


2009 forest/non-forest map



ALOS Satellite System

打ち上げ日	Jan. 24 2006
打ち上げロケット	H-IIA
衛星重量	about 4,000kg
発生電力	about 7kW at EOL
軌道	Sun Synchronous
高度	691.65km
軌道周期 (Sub-Cycle)	46 days (2 days)



PRISM : Panchromatic Remote-sensing
Instrument for Stereo Mapping

AVNIR-2: Advanced Visible and Near Infrared Radiometer type 2

PALSAR: Phased Array type L-band Synthetic Aperture Radar

Final – AVNIR-2

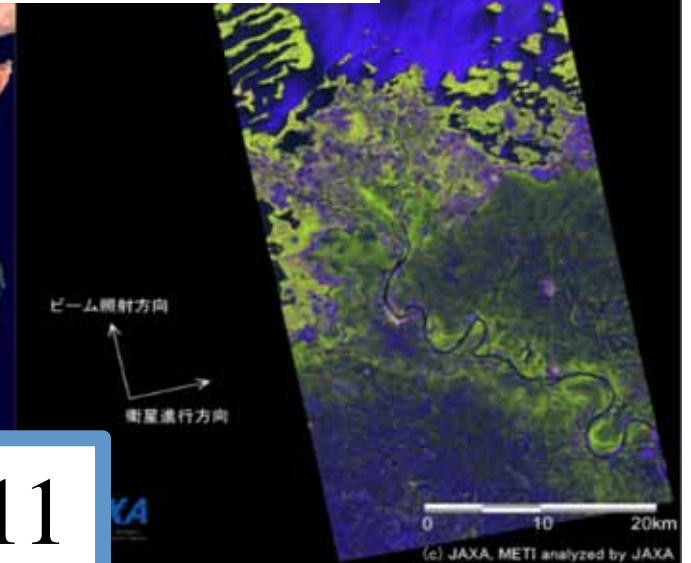
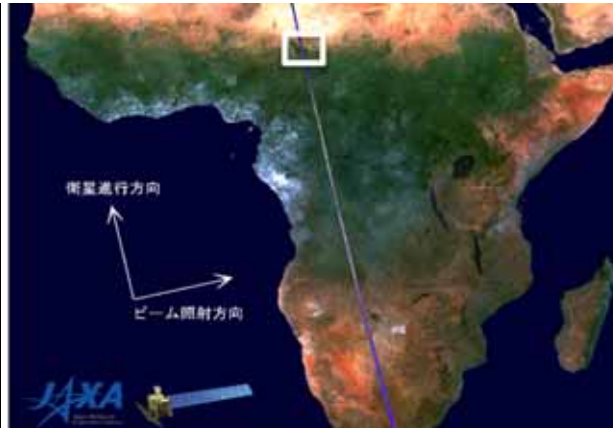
AV2/PRISM-track

PALSAR - FULLPOL

「Daichi」Good bye
-five years and
three months-

Final-PRISM

Final ALOS Images of April 22, 2011



3. Observation Results

2006/5/16~2011/1/23)

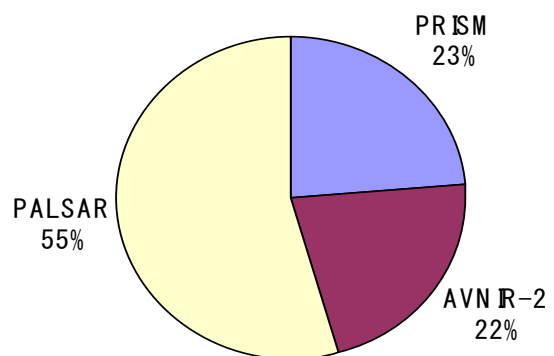
Sensor	Total(scenes)	BT
AVNIR-2	1.26M	93T
PRISM	8.2M	245T
PALSAR	2M	590T
subtotal	11.46M	928T

All the data were archived at EOC.

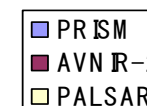
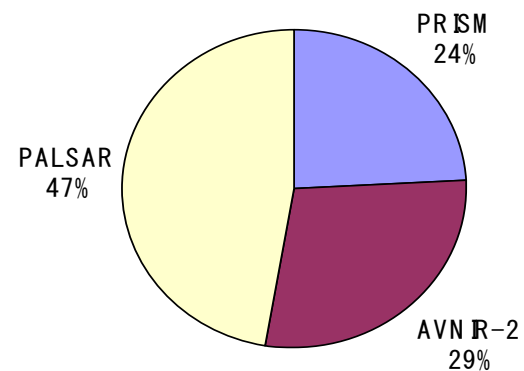
3.Observation results

Mission Status

定常段階 2006/10/20-2009/01/23)の観測時間割合



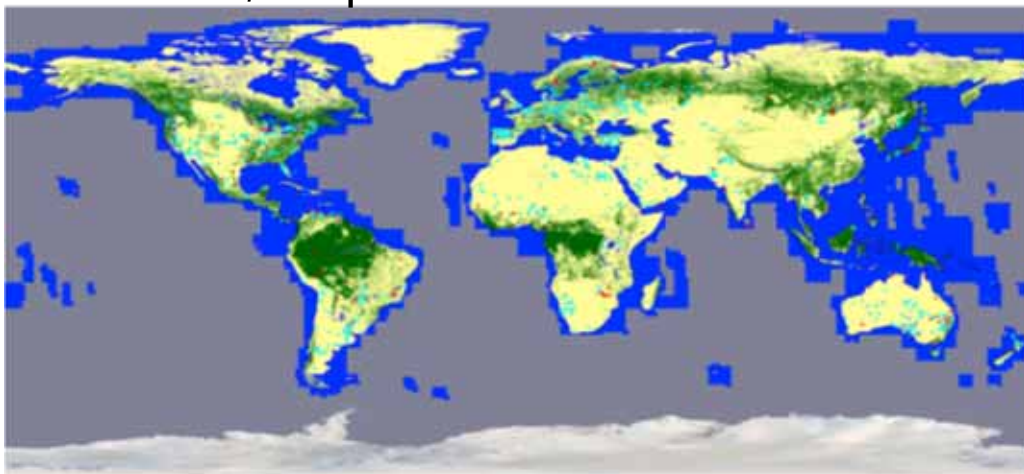
後期利用段階 2009/01/24-2011/01/23)の観測時間割合



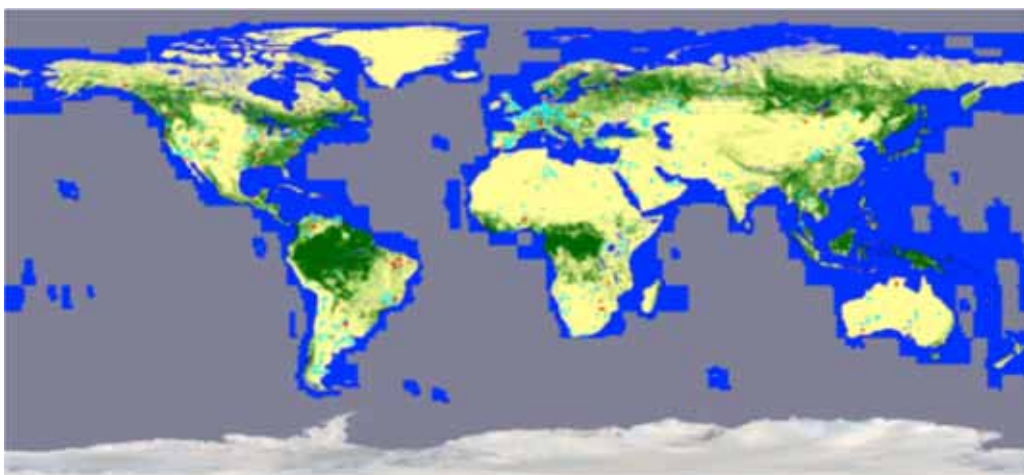
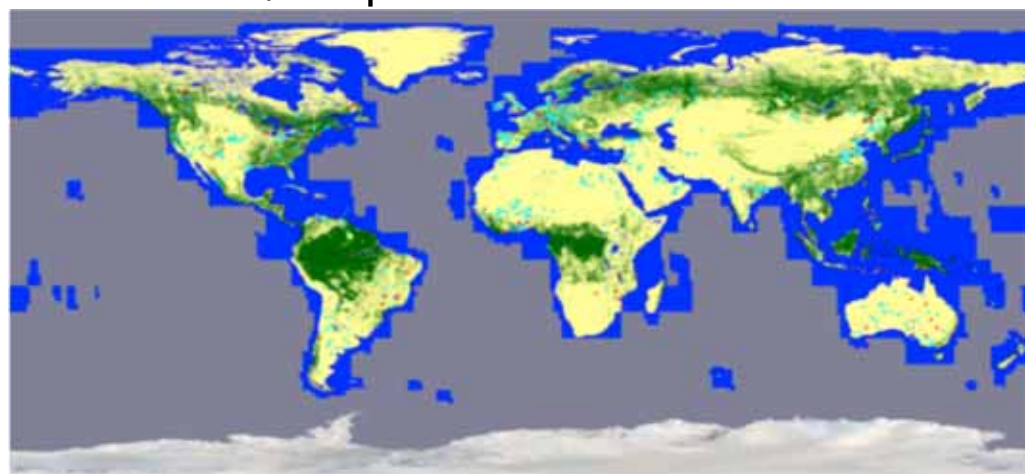
Accuracy evaluation of FNF2007-2009 using DCP data

Reprocessing using the screened data

PALSAR FNF 2007
84.54%, 925points

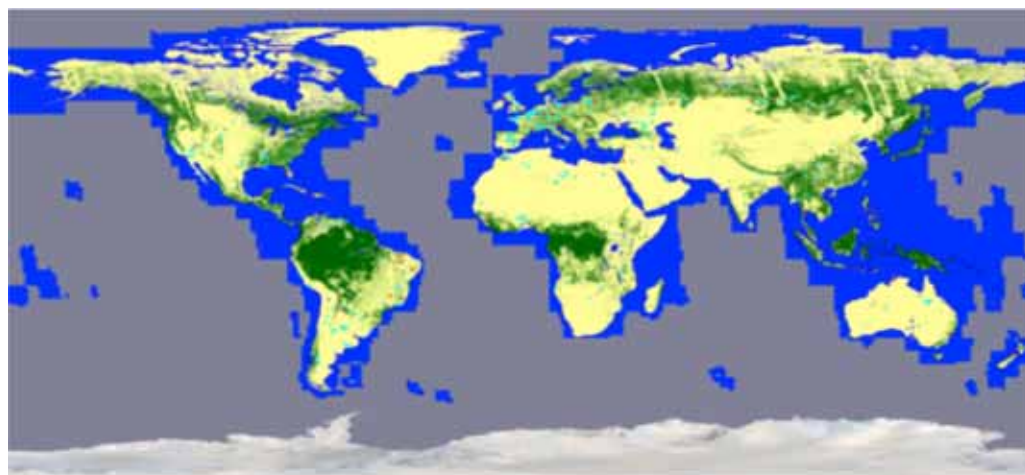


PALSAR FNF 2008
83.02%, 736points



PALSAR FNF 2009
82.68%, 635points

● : Forest, ● : Non-Forest, ● : Water
● : Correct, ● : Incorrect



PALSAR FNF 2010
83.93%, 280points

Global Mangrove Map

S02E133 New Guinea Is.



PALSAR 25 Mangrove

PALSAR Mangrove Map (2010)

USGS



8
USGS Mangrove Map (2000)

RA4 and forest training

ALOS-2 RA

July beginning 2012

Forest training course

March 26-:Lulucf

Next step: Lulucf, gamma-naught changes for
deforestation monitoring, etc.