

ALOS & PALSAR mission status

M. Shimada

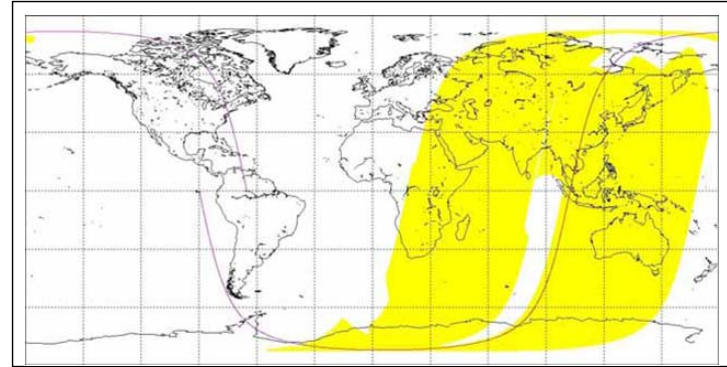
@KC14

- Satellite conditions
- SAR images quality
 - PLR
 - FBD
- TDRS +20% total acquisitions
- ppp

下降軌道

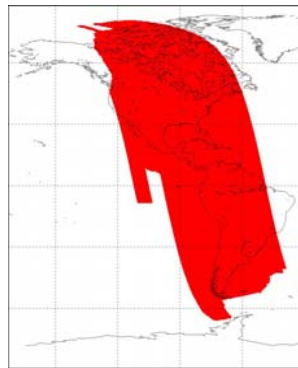


TDRS

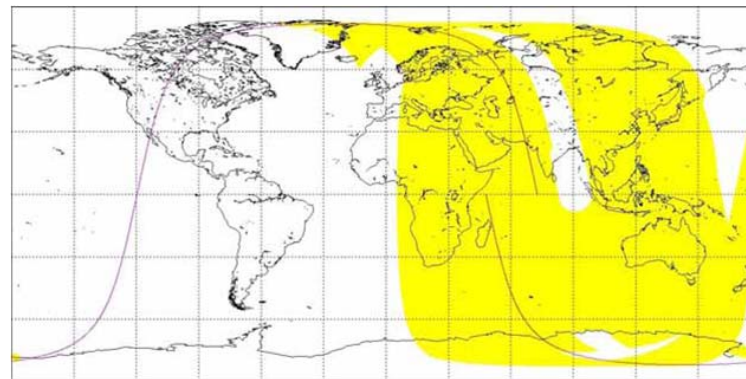


DRTS

上昇軌道

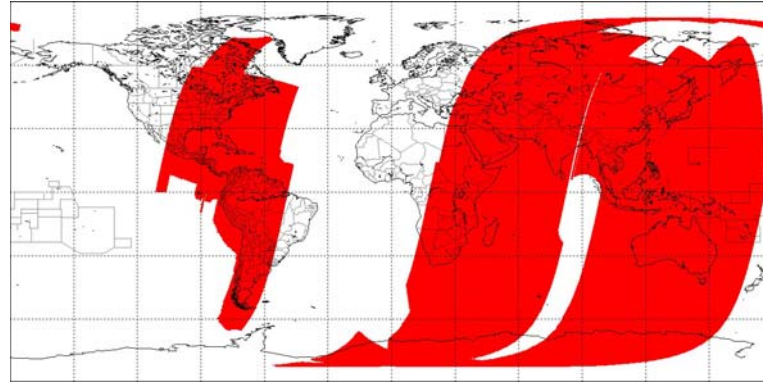


TDRS



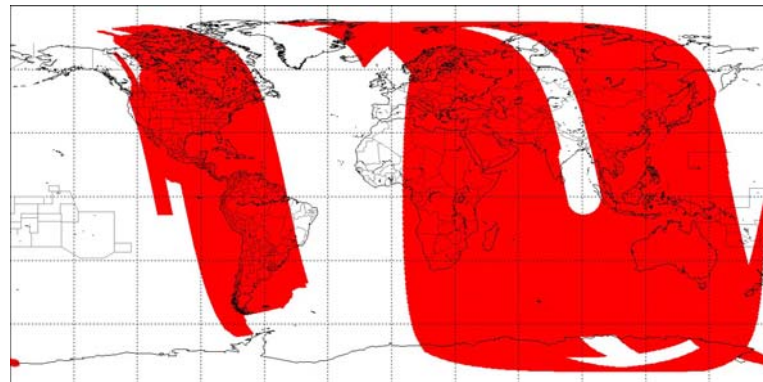
DRTS

下降軌道



DRTS+TDRS

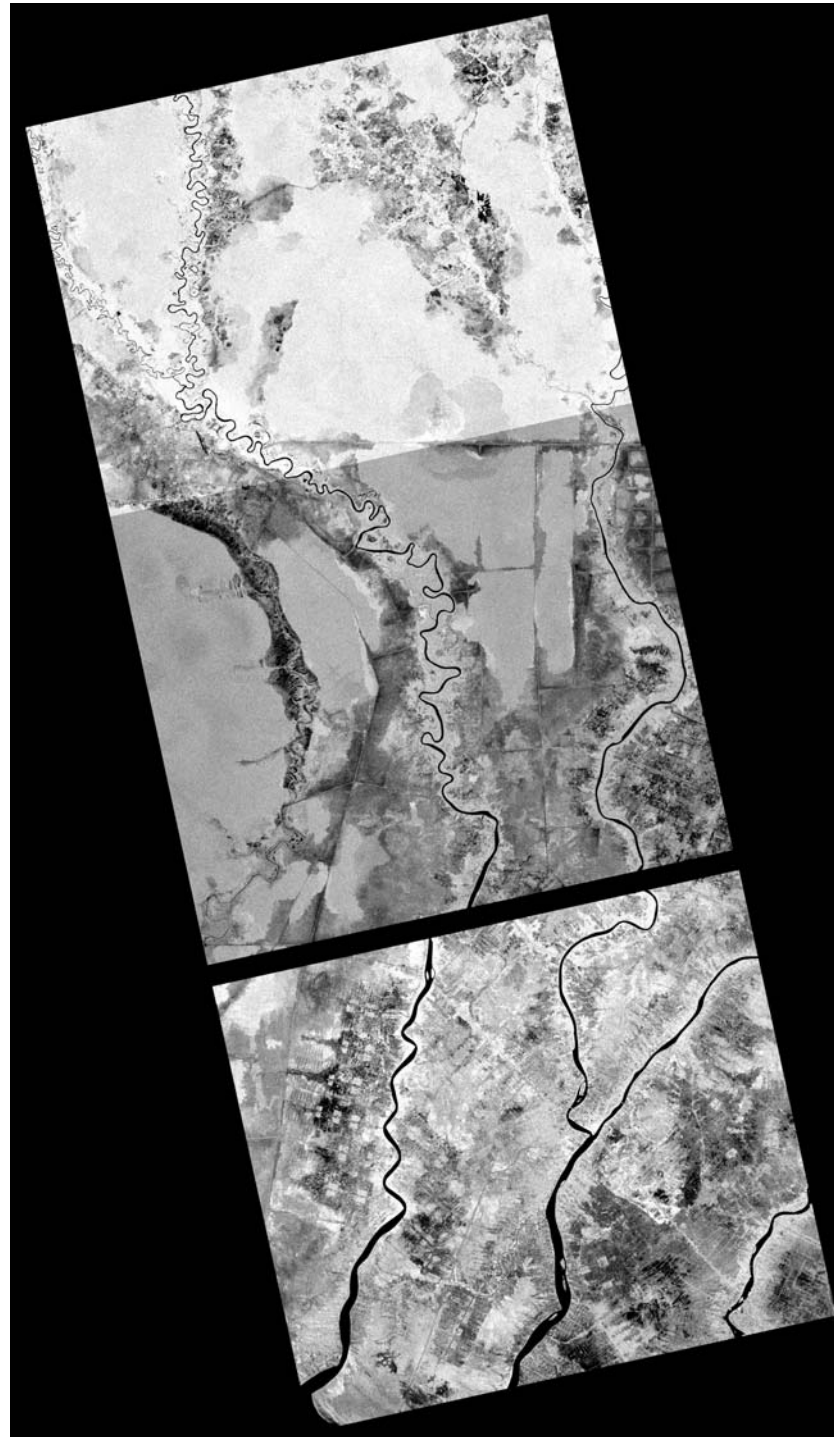
上昇軌道



DRTS+TDRS

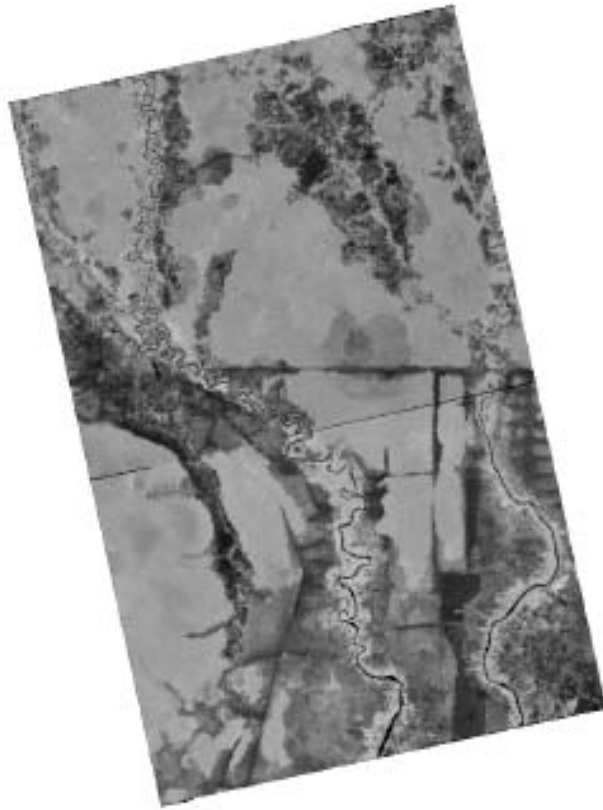
Question from
Martin

Jump of intensity at
Kalimantan.



JAXA tool

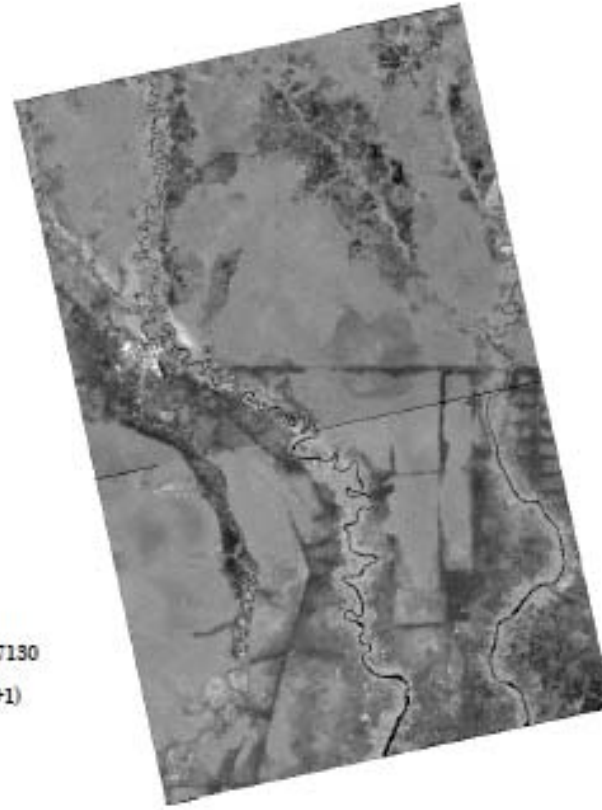
画像全体



HH

ALPSRP191607140
(Scene Shift = 0)

ALPSRP191607130
(Scene Shift = +1)



HV

Polarimetry data: from EOC data not from JAXA/EORC

Some image quality error: under investigation

Demonstration by the OpenLayers

PALSAR Global Forest Map

Demonstrate overlaying PALSAR 50m Mosaic(R=HH,Q=HV,B=HH/HV) and icons for timeseries dataset.

