

PALSAR Mapping Arid Floodplain Wetlands Paroo River Catchment Murray Darling Basin, Australia

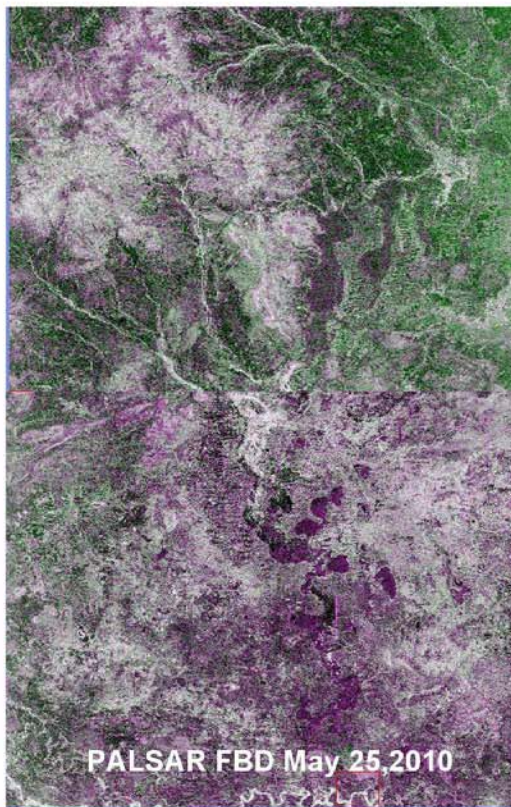
MDB
35 significant
wetlands
10 listed Ramsar
sites

Paroo river catchment
73 650km²



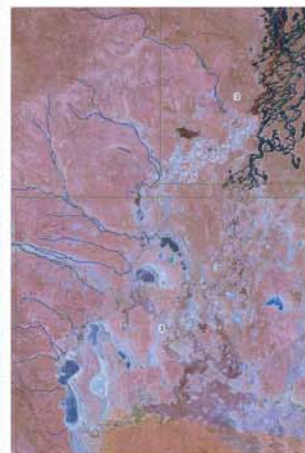
Major Objectives

- use PALSAR (FB and Scansar) for mapping and monitoring wetlands in the MDB arid zone
- analyse pattern of flood flows, duration and recession of surface water
- assess vegetation, soil and animal response to periodic flooding
- investigate the effect of environmental flows in semi-arid landscapes

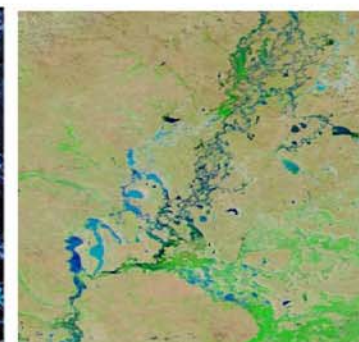
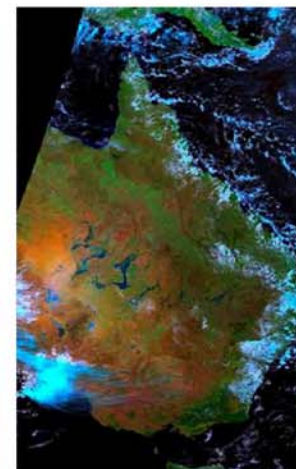


PALSAR FBD May 25, 2010

Periodic flooding
and vegetation
response in arid
wetlands is poorly
understood



Passage of floodwaters
towards Peery Lake,
Landsat image,
March, 2003



MODIS
Channel Country
and sub-set
Paroo River Catchment
March 14, 2010

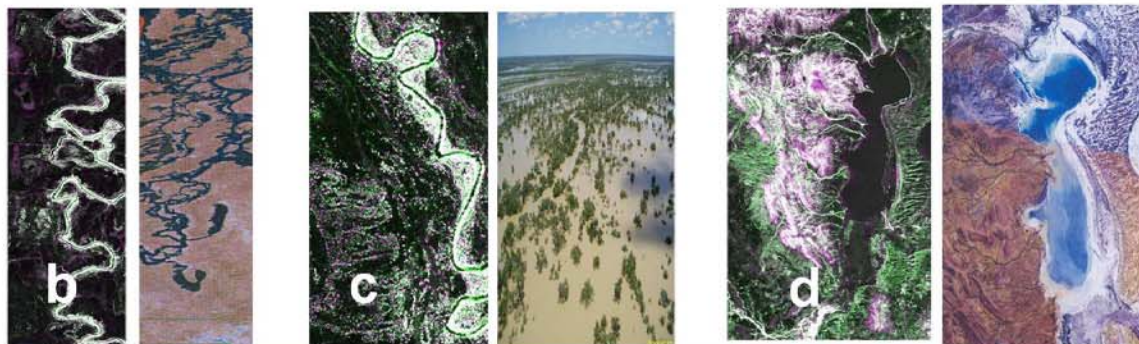
Record rainfalls were
received in Northern
Australia, January to
April, 2010



Lake Peery
April 10, 2010
Photo: Peter Terrill



Connectivity of braided streams, (a)
Floodplains (b), overflow channels (c)
and semi-permanent terminal lakes (d).



K&C Science Team
Tony Milne, Rachel Melrose
UNSW, and Ian Tapley
Horizon Geoscience Pty, Ltd

