

The logo for the Advanced Land Observing Satellite (ALOS) program, featuring the word "ALOS" in a white, serif font against a background of a satellite image showing a river delta and surrounding terrain in shades of green and blue.

K&C Initiative
An international science collaboration led by JAXA

K&C Product Delivery Report and Schedule for 2010

Philippe PAILLOU
OASU, University of Bordeaux, France

Science Team meeting #14
JAXA TKSC/RESTEC HQ, Tsukuba/Tokyo, June 14-18, 2010

K&C deliverables

Papers and Reports

1. Published

- K&C Phase-1 report.
- K&C Wiki and K&C booklet contributions (Sahara).
- Ph. Paillou, A. Rosenqvist, J.-M. Malézieux, B. Reynard, T. Farr, E. Heggy, "Discovery of a double impact crater in Libya: the astrobleme of Arkenu", *C.R. Acad. Sci. Paris, Geoscience*, vol. 335, pp. 1059-1069, 2003.
- Ph. Paillou, A. El Barkooky, A. Barakat, J.-M. Malézieux, B. Reynard, J. Dejax, E. Heggy, "Discovery of the largest crater field on Earth in the Gilf Kebir region, Egypt", *C.R. Acad. Sci. Paris, Geoscience*, vol. 336, pp. 1491-1500, 2004.

K&C deliverables

Papers and Reports

1. Published (cont)

- Ph. Paillou, B. Reynard, J.-M. Malézieux, J. Dejax, E. Heggy, P. Rochette, W. U. Reimold, P. Michel, D. Baratoux, Ph. Razin, J.-P. Colin, "An extended field of crater-shaped structures in the Gilf Kebir region – Egypt: Observations and hypotheses about their origin", *Journal of African Earth Sciences*, vol. 46, pp. 281-299, 2006.
- Ph. Paillou, M. Schuster, S. Tooth, T. Farr, A. Rosenqvist, S. Lopez, J.-M. Malézieux, "Mapping of a major paleodrainage system in Eastern Libya using orbital imaging Radar: The Kufrah River", *Earth and Planetary Science Letters*, vol. 277, pp. 327-333, doi: 10.1016 / j.epsl.2008.10.029, 2009.
- Several communications at international conferences (IGARSS'03, IGARSS'07, IGARSS'08, IGARSS'09).

K&C deliverables

Papers and Reports

2. Submitted/in preparation

- Ph. Paillou, T. Farr, A. Rosenqvist, S. Lopez, "Mapping Subsurface Geology in Sahara using L-band SAR: First Results from the ALOS/PALSAR Imaging Radar", *IEEE J. of Selected Topics in Earth Observations and Remote Sensing*, 2010, submitted.
- Ph. Paillou, S. Tooth, S. Lopez, M. Schuster, T. Farr, "Newly Mapped Southwestern Tributaries of the Kufrah River Paleodrainage System in Libya: Implications for its Past Connection to the Mediterranean Sea", *Earth and Planetary Science Letters*, 2010, submitted.

K&C deliverables

Data sets and Thematic products
(mosaics, classification maps etc.)

1. Completed and Delivered to JAXA

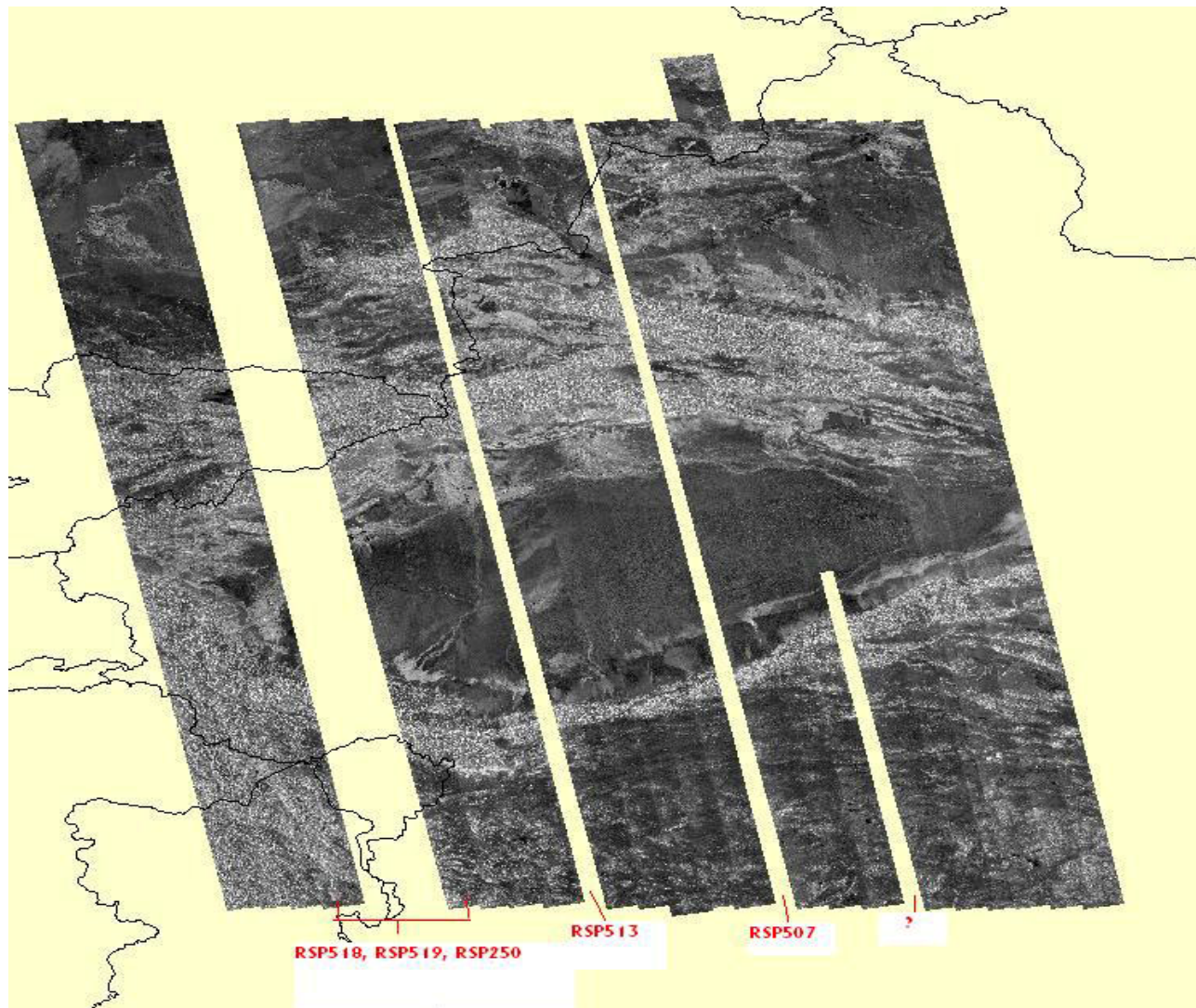
- PALSAR HH+HV mosaic of Sahara and Arabia, 1°x1° geocoded images (delivered Jan. 2009, K&C#11).
- Geocoded PALSAR + HYDROSHEDS atlas of Sahara and Arabia, 1°x1° maps (delivered Jun. 2010, K&C#14).
- Still a couple of missing strips.

2. Completed, but not yet delivered

- PALSAR HH+HV mosaics of Sikiang and Badain Jaran deserts (northern China), K&C extended project, ***several missing strips***.

ALOS

K&C Initiative
An international science collaboration led by JAXA



K&C deliverables

Data sets and Thematic products
(mosaics, classification maps etc.)

3. To be completed during 2010

- PALSAR HH+HV mosaics of Sikiang and Badain Jaran deserts.
- Geocoded PALSAR + HYDROSHEDS atlas of Sikiang and Badain Jaran deserts.
- Field work in northern China, end of Sept. 2010 (coop. Chinese Academy of Science).
- Field work in southern Tunisia, Nov. 2010 (coop. Tunisian Center for Remote Sensing).