

ALOS K&C 12

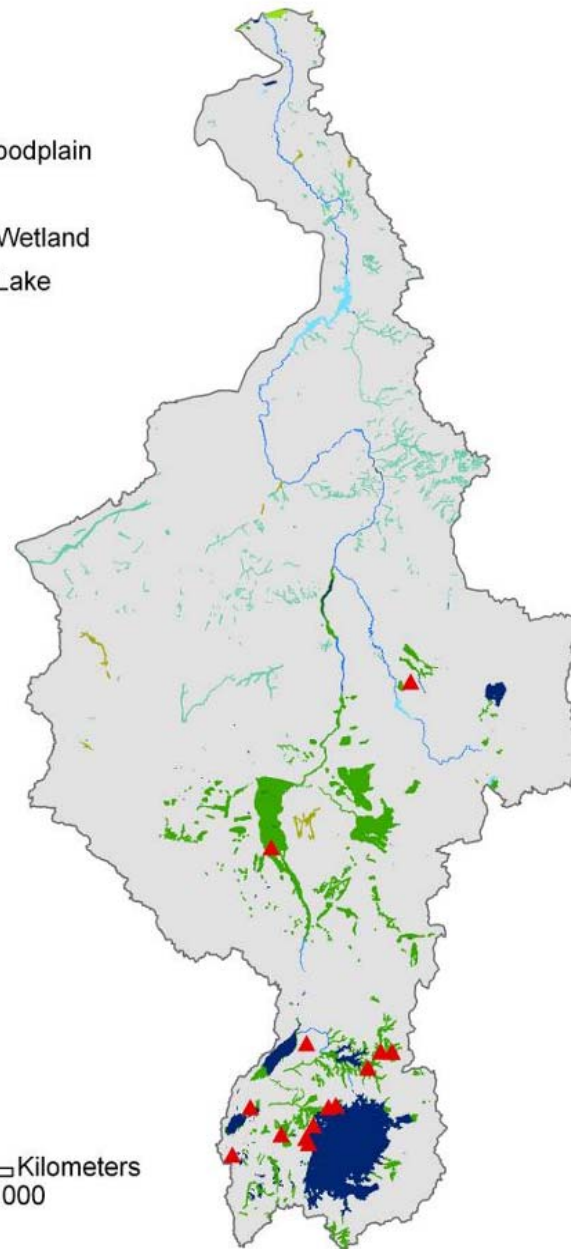
Wetland Theme: The Upper Nile Basin

Lisa-Maria Rebelo

International Water Management Institute

www.iwmi.org

- Lake
- Reservoir
- River
- Freshwater Marsh/Floodplain
- Coastal Wetland
- Pan/Brackish/Saline Wetland
- Intermittent Wetland/Lake
- Nile Basin
- ▲ Ramsar Sites



Wetlands of the Nile Basin

- Wetlands occur extensively across the Basin
- Offer many ecosystem services
- Vital in supporting local populations
- Sustainable management is critical

“Wetlands affect the daily lives of every one of Uganda’s citizens and provide a powerful wall of protection for Uganda’s economic development”
(Paul Mafabi, commissioner of the Wetlands Management Department in Uganda’s Ministry of Water and Environment)

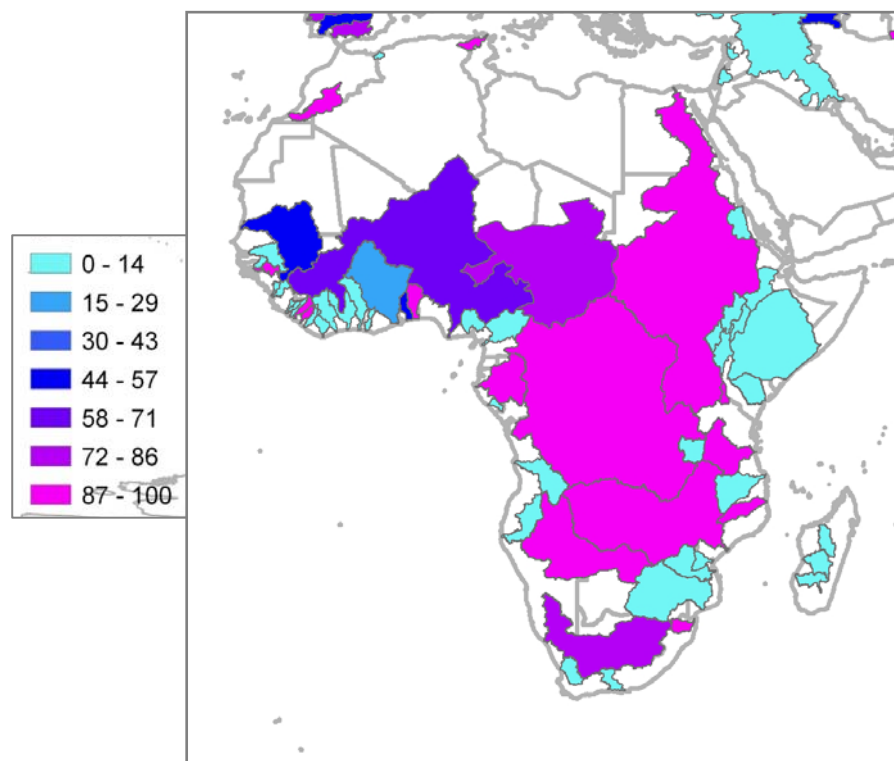
Ethiopia	2.9 (2.2)
Uganda	5.7 (5.0)

www.iwmi.org

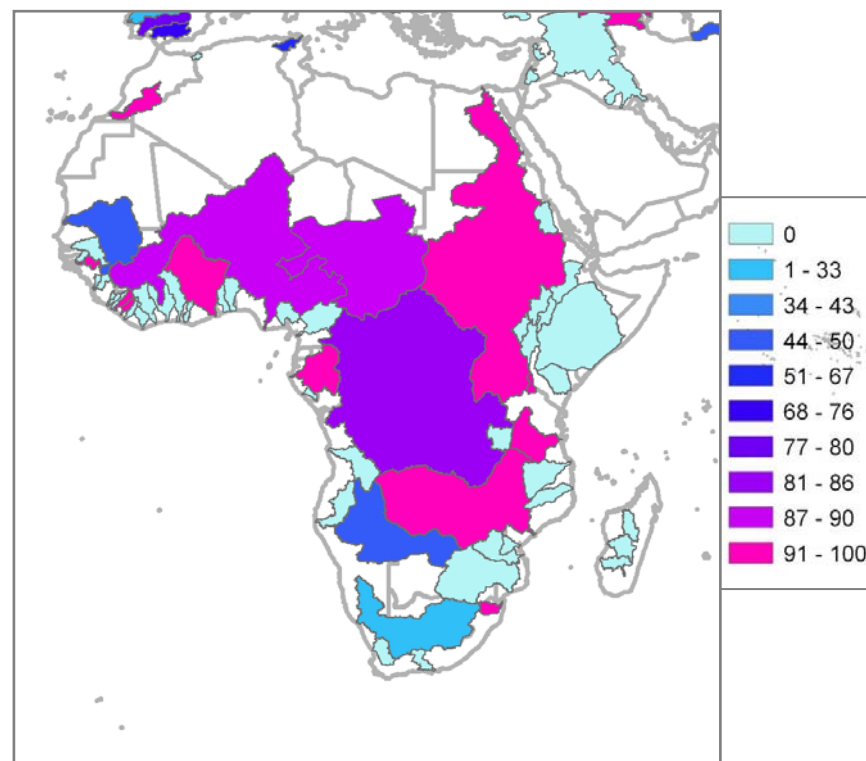
Global Lakes and Wetlands Database (Lehner and Doll 2004)



Wetlands of International Importance in the Nile Basin:



% sites used for agriculture

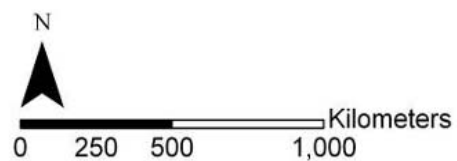


% sites threatened by agriculture



- Lake
- Reservoir
- River
- Freshwater Marsh/Floodplain
- Coastal Wetland
- Pan/Brackish/Saline Wetland
- Intermittent Wetland/Lake
- Nile Basin
- ▲ Ramsar Sites

- 0.6 – 13 million ha
- 10 – 40 km wide
- 650 km long
- 5.7million ha designated a Ramsar site



The Sudd Wetland: Opportunities and Constraints

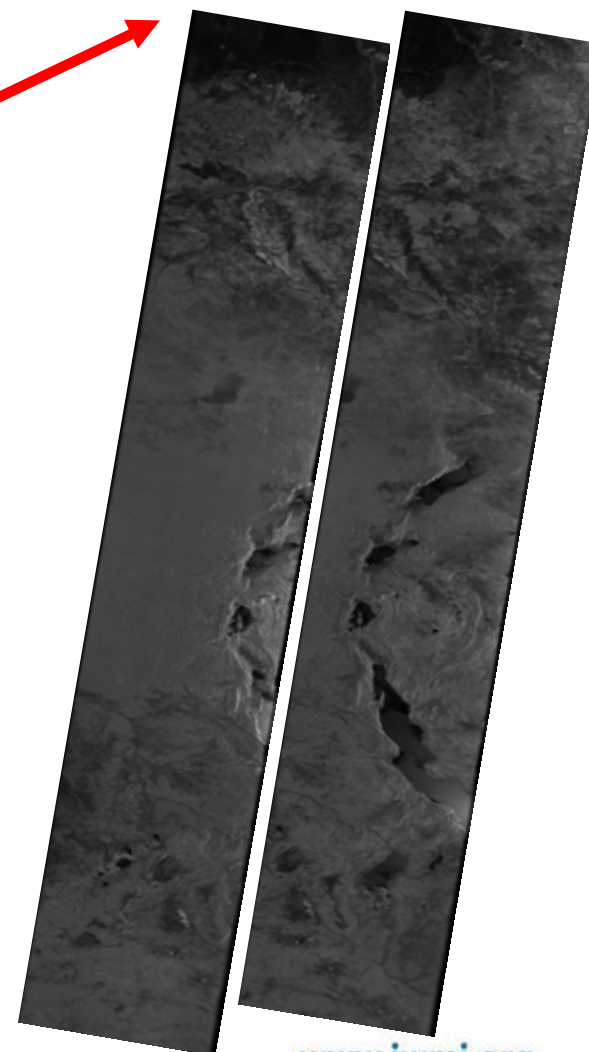
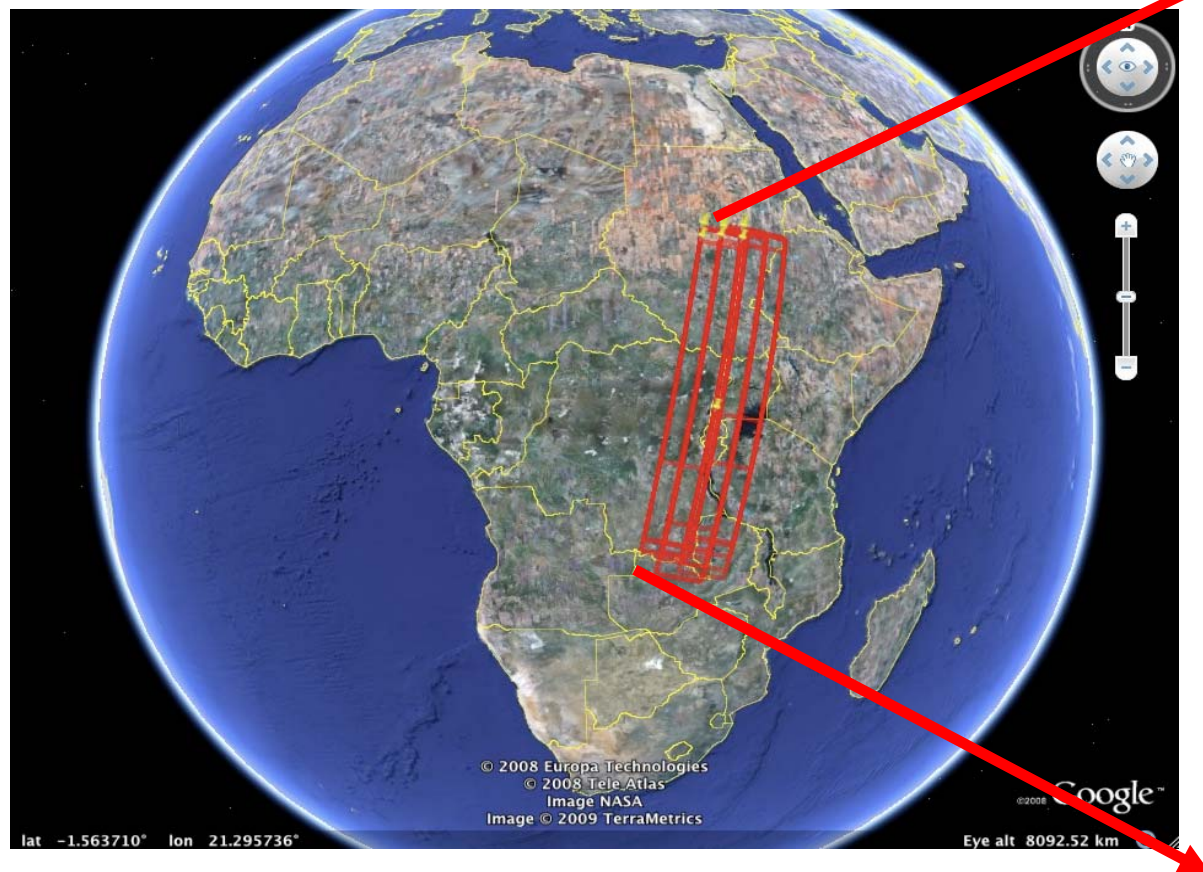
- Dynamic wetland system
- Designated as a Ramsar site in 2006
- Extent is determined by fluctuations in outflow from Lake Victoria
- Large evaporation from the wetland, 40% of inflows
- Home to several hundred thousand people

➔ **Key challenge - maintaining the balance between food security and socio-economic needs, and conservation of the wetland biodiversity**

- The main goal of the study is to understand and assess options for integrated management of the Sudd wetland, addressing:
 - Food security
 - Socio-economic development
 - Maintenance of ecosystem services

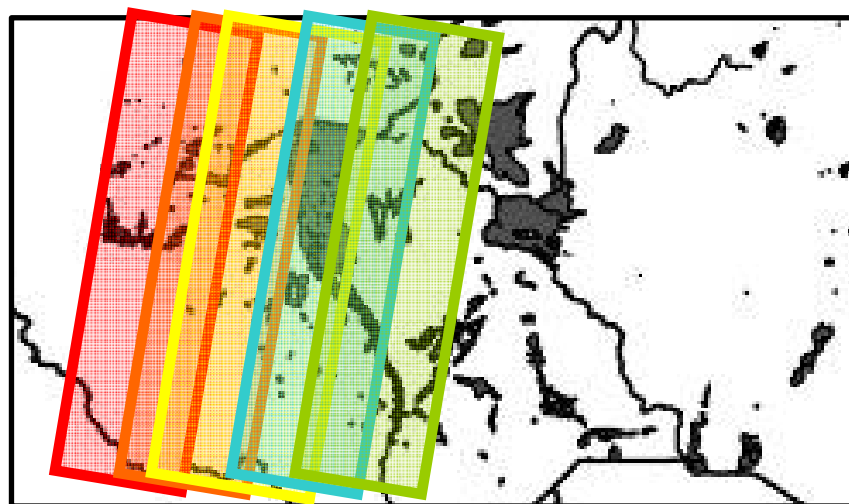


The Sudd Wetland: Inundation Extent



www.iwmi.org

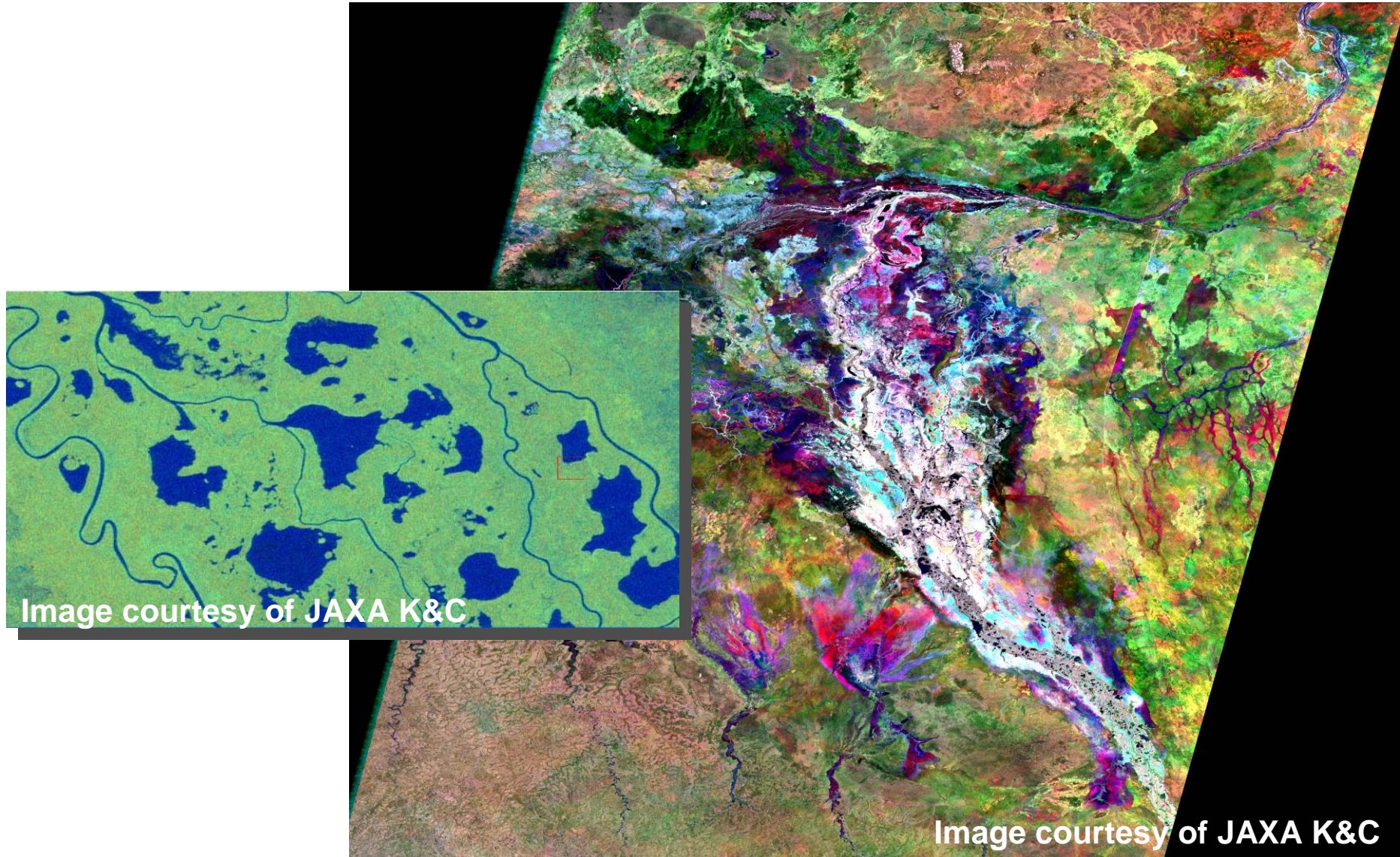




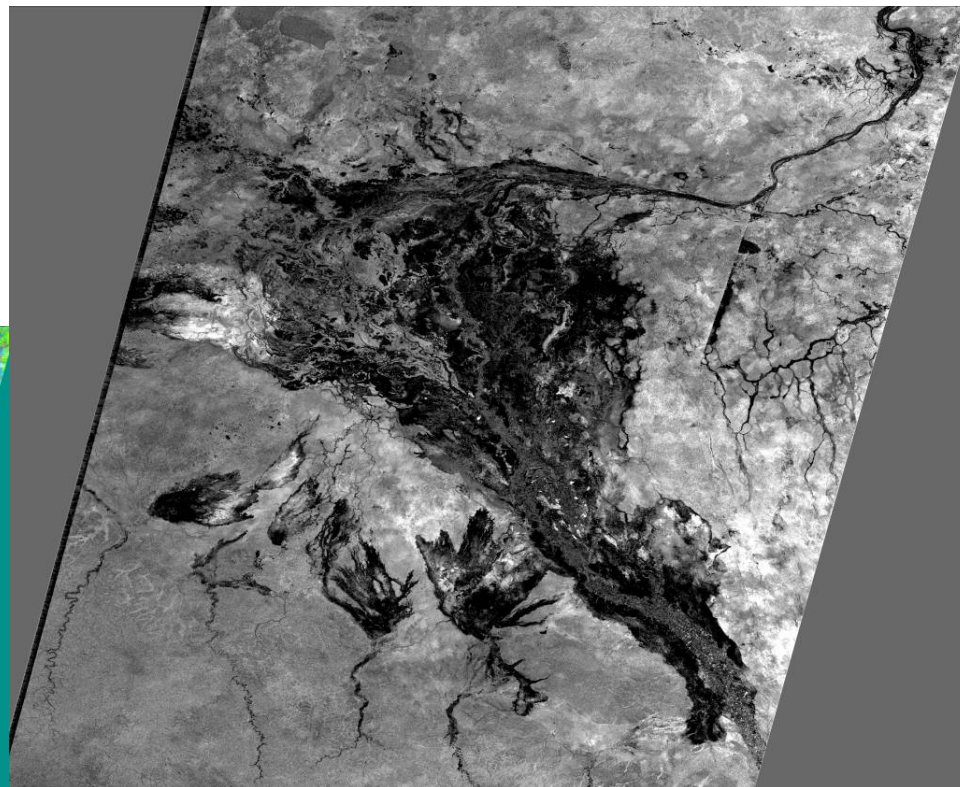
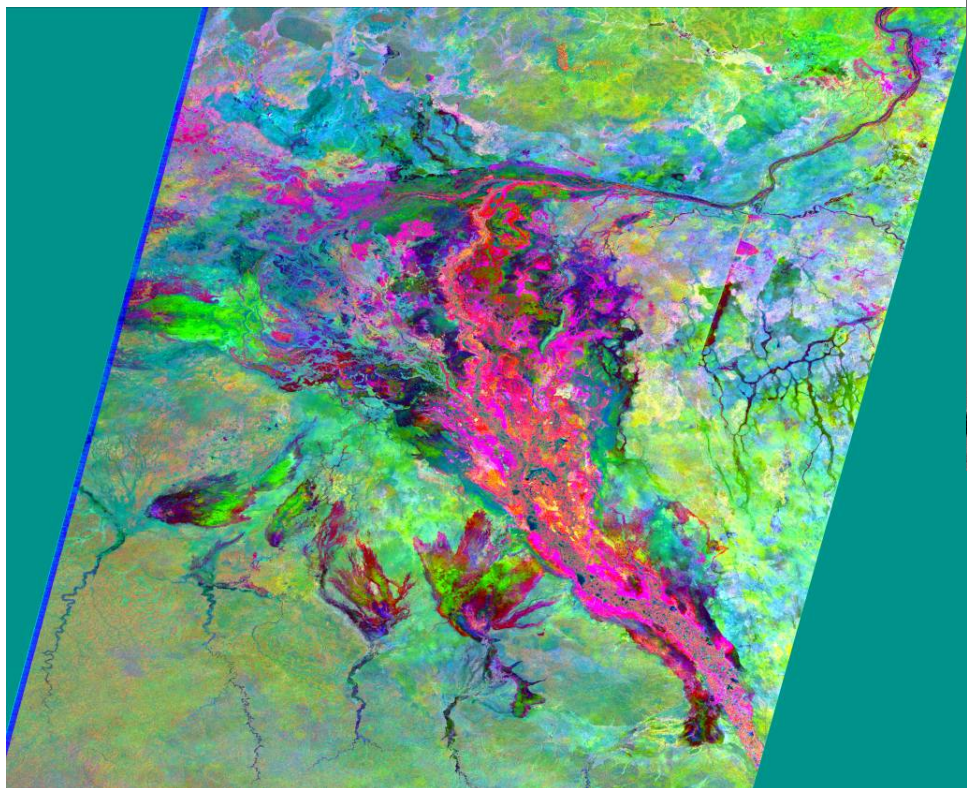
259 ----- 247

UPPER NILE BASIN		RSP				
		259	256	253	250	247
CYCLE	12	Jun 2007	Jun 2007	Jun 2007	Jun 2007	Jun 2007
	13	Aug 2007			Jul 2007	
	14	Sep 2007	Sep 2007	Sep 2007		Sep 2007
	15	Nov 2007			Oct 2007	Oct 2007
	16	Dec 2007	Dec 2007	Dec 2007		Dec 2007
	17				Jan 2008	
	18		Mar 2008	Mar 2008		
	19	May 2008	May 2008	May 2008	Apr 2008	Apr 2008
	20	Jun 2008			Jun 2008	Jun 2008

The Sudd Wetland: Inundation Extent



ALOS PALSAR (ScanSAR)
RED: June 2007, GREEN: September 2007, BLUE: December 2007

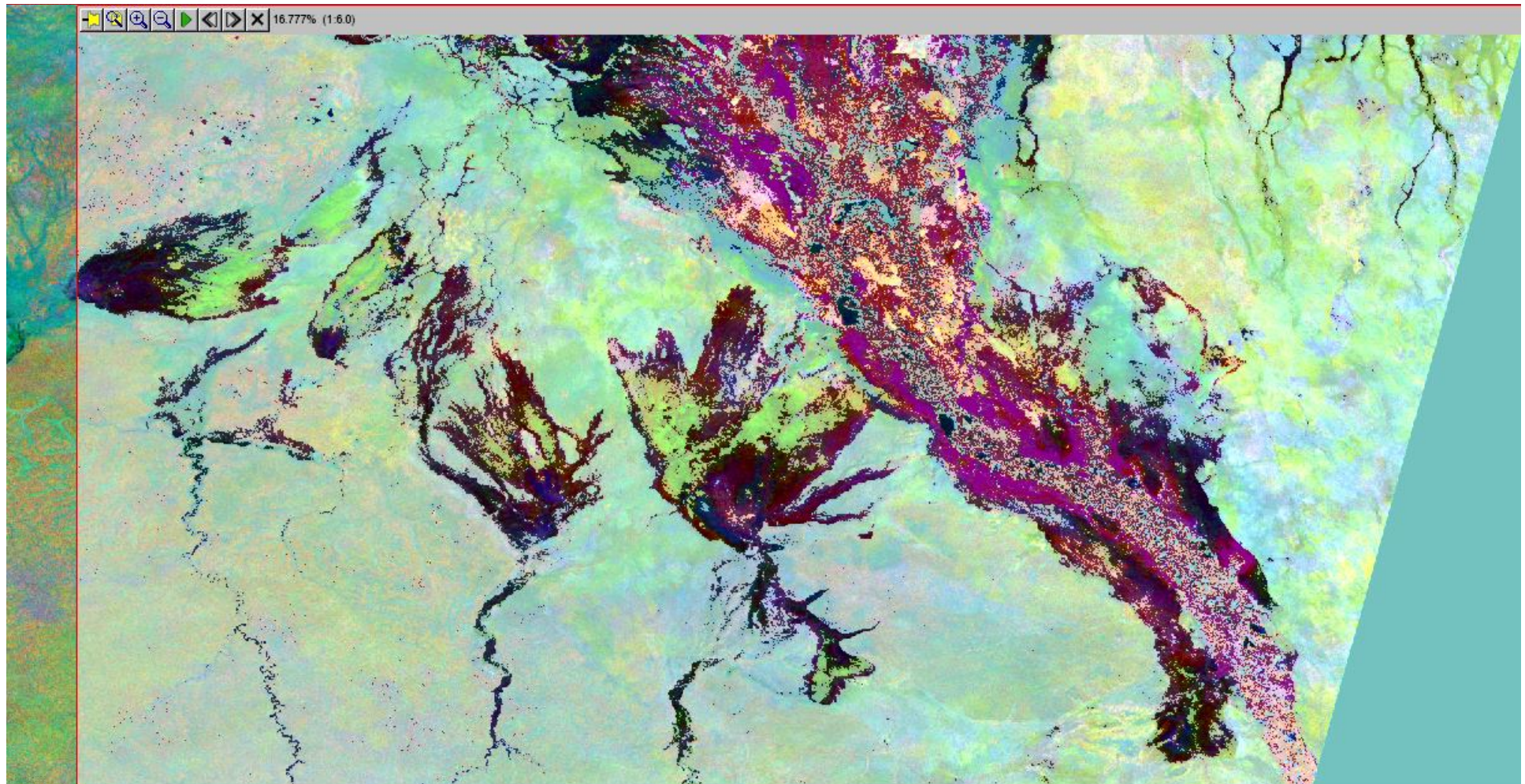


ALOS PALSAR: ScanSAR

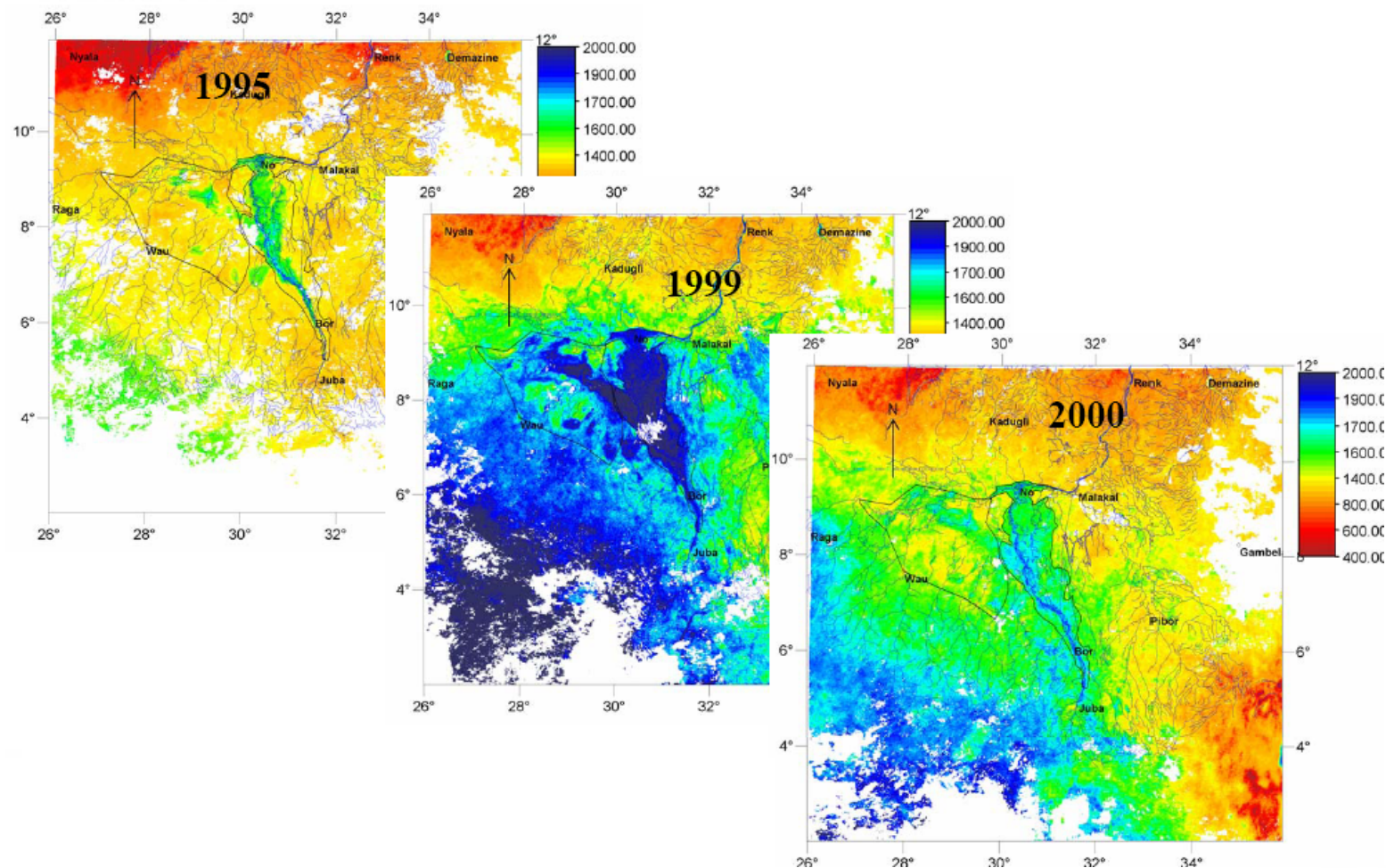
PCA: June 2007, Sep 2007, Dec 2007

www.iwmi.org





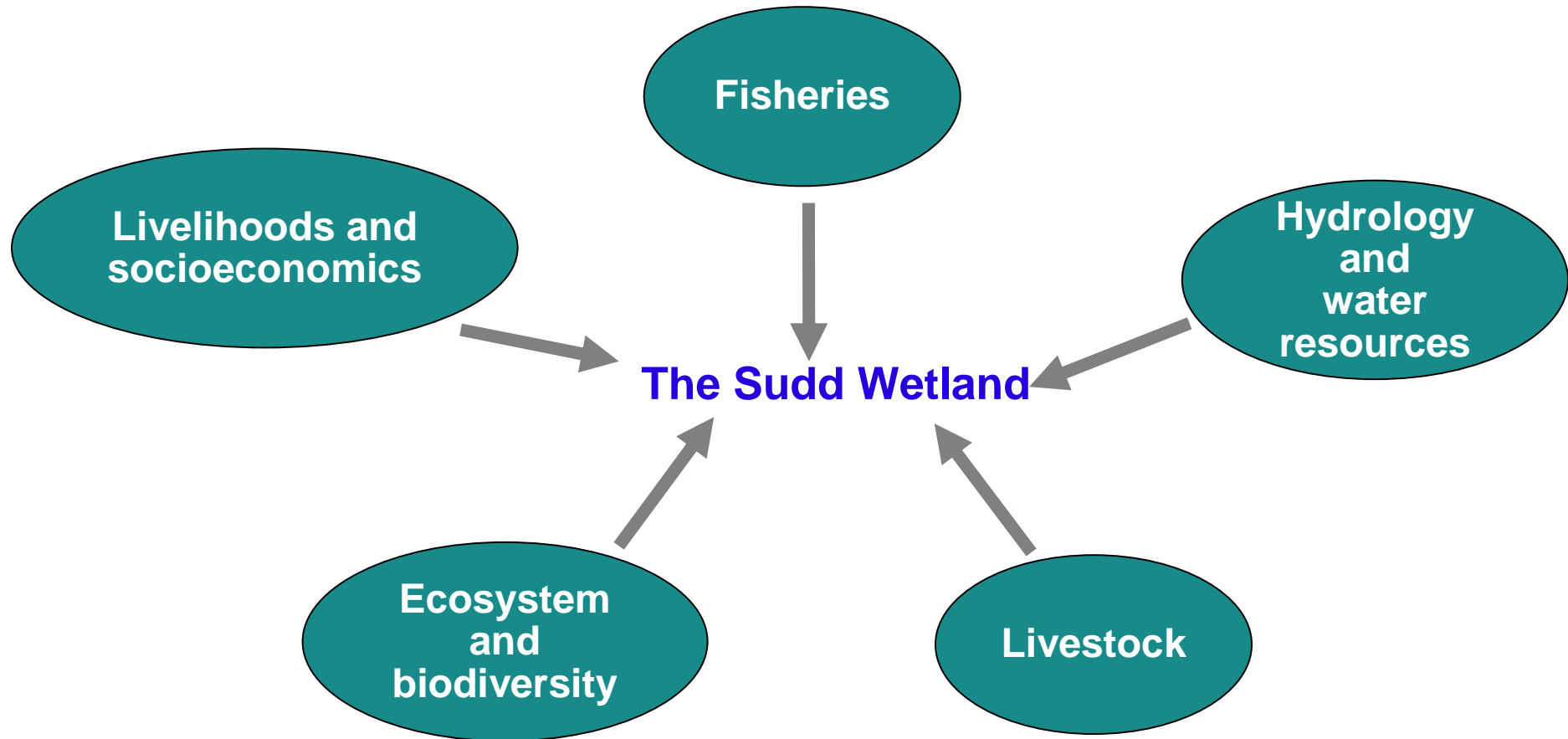
The Sudd Wetland: ET Estimations

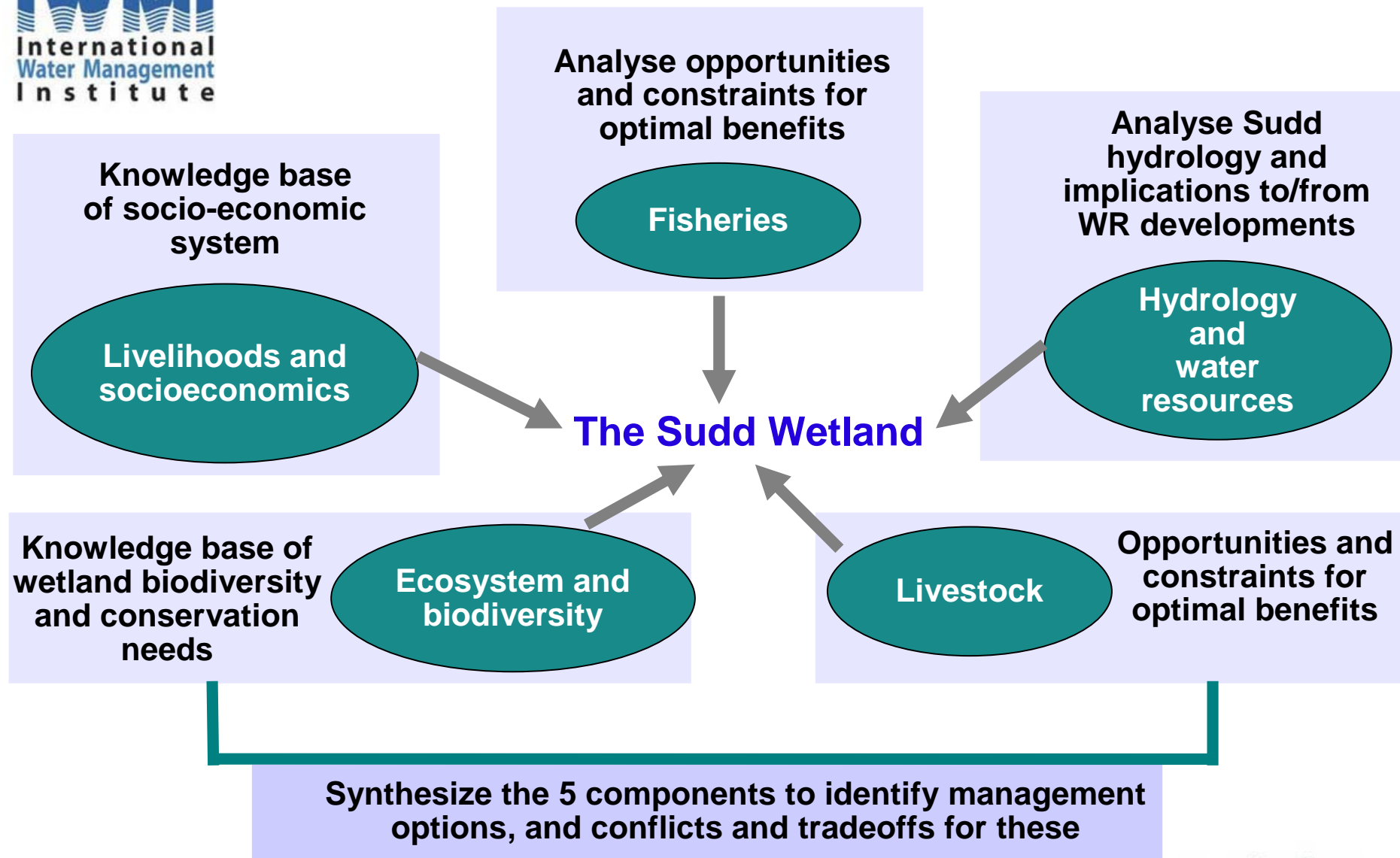


Source: Y Mohammed, IWMI www.iwmi.org



The Sudd Wetland: Opportunities and Constraints





Thank you!

