

## Wetlands mapping Central Kalimantan

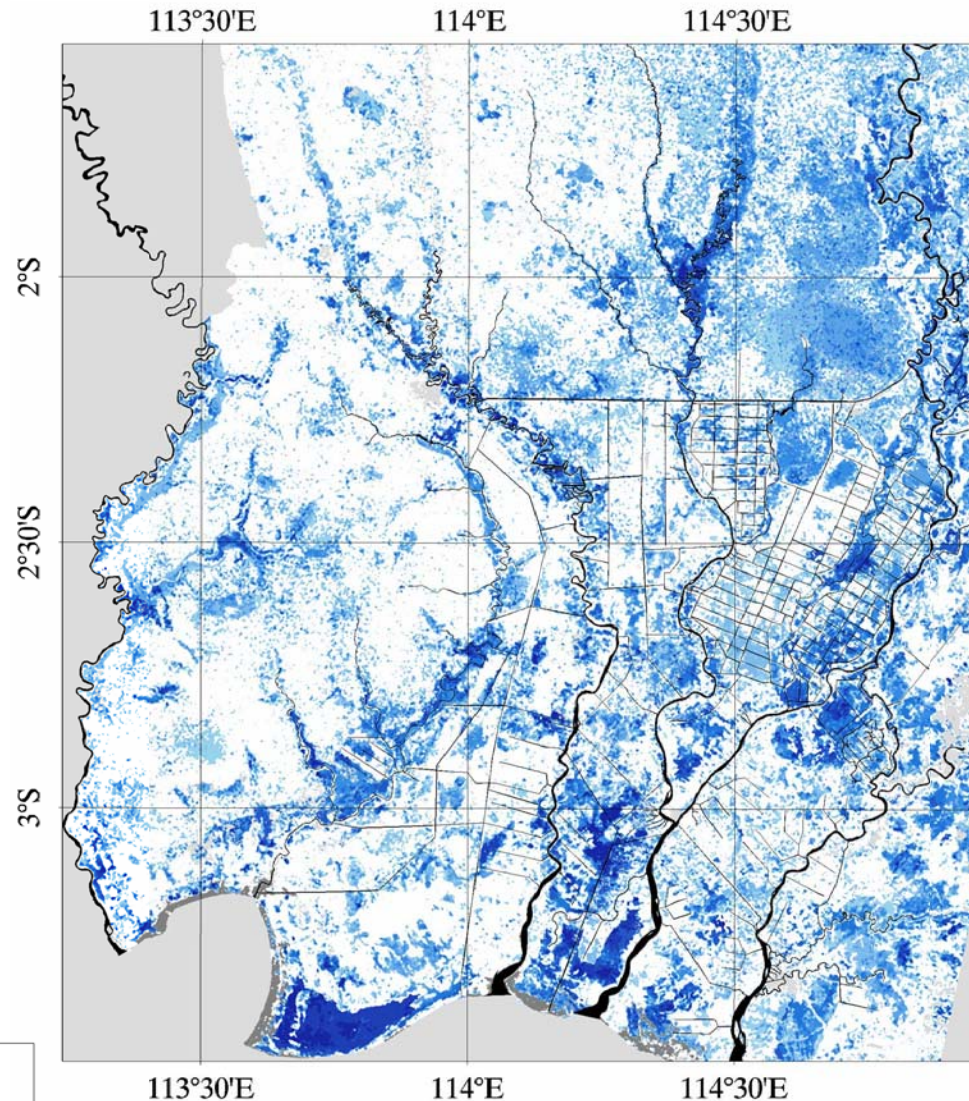
Mid-term results

### Project objectives

Inventory and physical characterization of peat swamp forests in South-East Asia in support of hydrological modeling, management, protection and restoration. Current loss of peat swamp forest causes enormous emissions of CO<sub>2</sub> at global level.

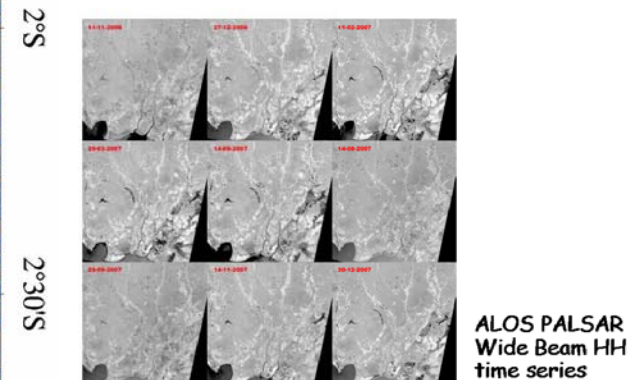
### Results

For the Central-Kalimantan prototype area a series of flood event maps is produced for the period November 2006 until December 2007. Use is made of systematic and frequent observation by PALSAR radar and a previously produced LULC map. The approach is based on land cover dependant backscatter fluctuation caused by flooding or peat soil ground water level change.

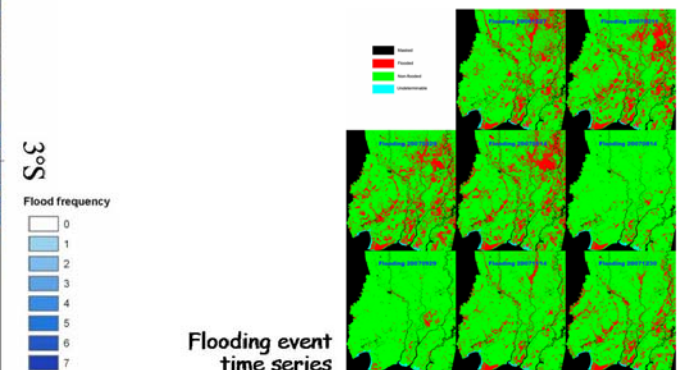


Flood frequency map

Input data: ALOS PALSAR  
ScanSAR HH (WB1)  
EOC standard product Level 1.5:  
11-11-2006, 27-12-2006, 11-02-2007,  
29-03-2007, 14-05-2007, 14-08-2007,  
29-09-2007, 14-11-2007, 30-12-2007



ALOS PALSAR  
Wide Beam HH  
time series



Flooding event  
time series

Work performed for this poster was  
funded by Euroconsult MottMacDonald

Martin Vissers, SarVision,  
The Netherlands; [vissers@sarvision.nl](mailto:vissers@sarvision.nl)

&

Dirk Hoekman, Wageningen University,  
The Netherlands; [dirk.hoekman@wur.nl](mailto:dirk.hoekman@wur.nl)