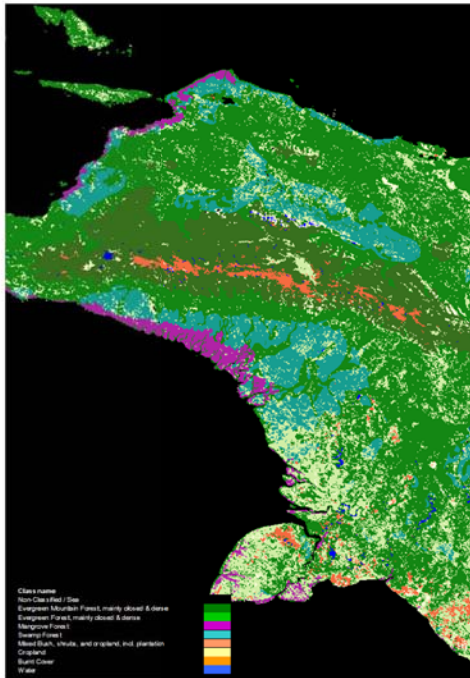


Vegetation Cover Map, Irian Jaya, Indonesia

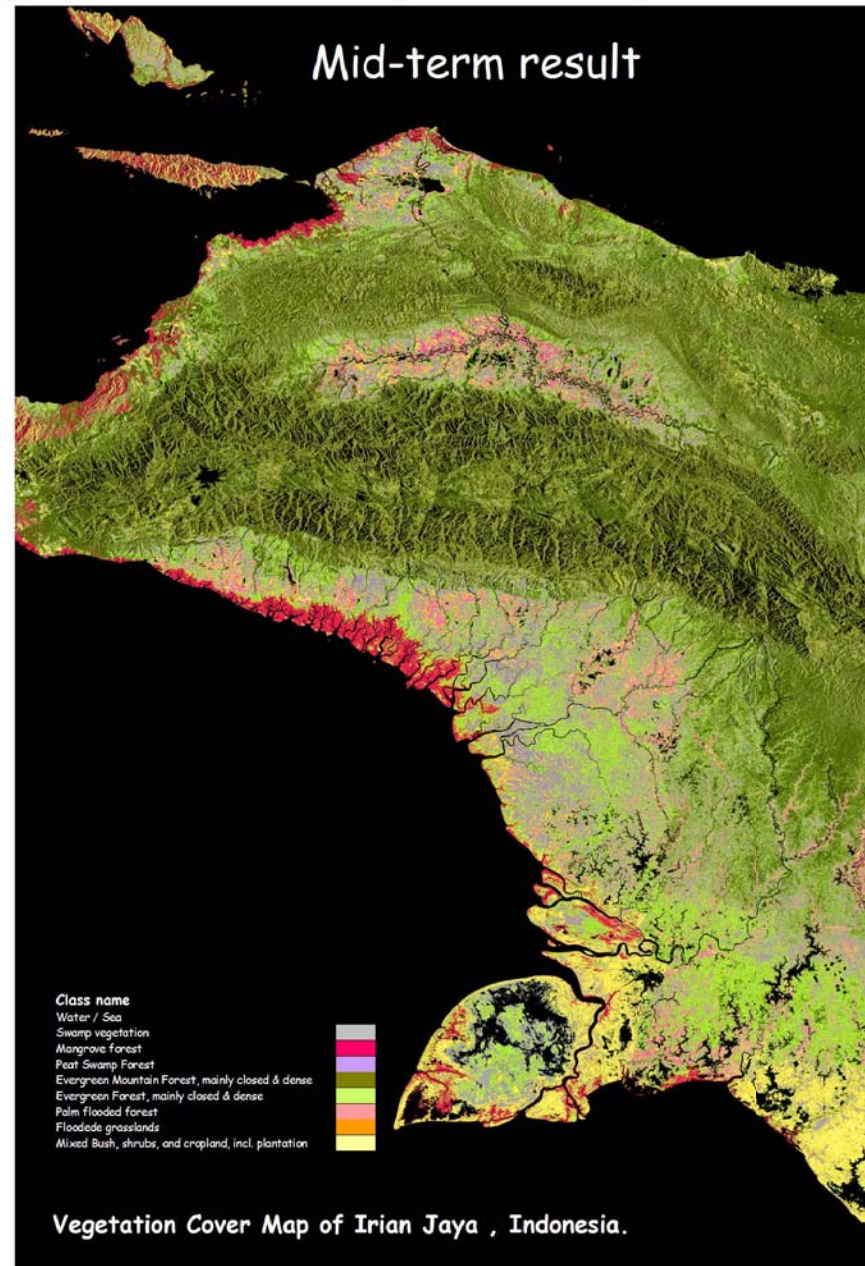


Forest Cover Map of insular South East Asia, 2002, 6VM TREES project. TREE series D: Thematic Product # 3.

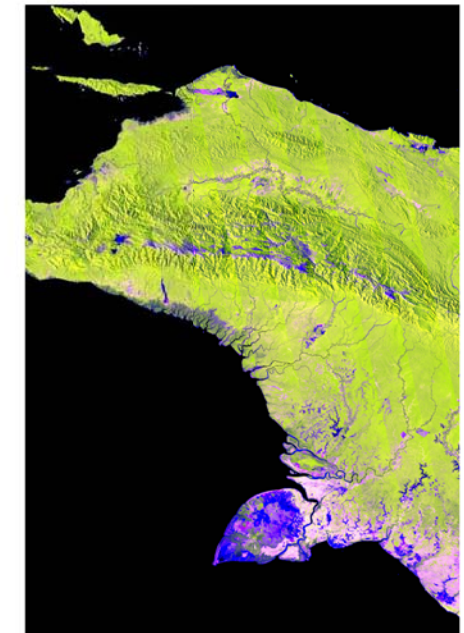
Project objective

Accurate mapping of actual vegetation cover types in Indonesian Irian Jaya is a main task to initiate land cover monitoring. Inventory of actual forest extent, forest types and resources is necessary for the provincial government to reinforce forest management, biodiversity assessment and conservation activities. High resolution mapping based on cloud free ALOS PALSAR images, supported by field information, can fulfil the users needs.

Marcela Quinones, SarVision,
The Netherlands; quinones@sarvision.nl
&
Dirk Hoekman, Wageningen University,
The Netherlands; dirk.hoekman@wur.nl



Vegetation Cover Map of Irian Jaya , Indonesia.



Input data:
ALOS PALSAR Fine Beam Dual Pol (HH-HV) South East Asia mosaic (50 m. resolution), 2007.

Results

An expert driven interpretation of the backscatter levels was done over the ALOS PALSAR Dual Pol (HH-HV) mosaic. First version of a vegetation cover map is presented using a legend similar to the forest cover map of insular South East Asia, 2002, created by the TREES project. Compared to the TREES map the ALOS PALSAR Dual Pol (HH-HV) based vegetation cover map, has a higher spatial resolution and the map accuracy is higher due to the use of cloud free images. The definition of new classes is possible especially for wet ecosystems.