

Land Use/Cover Mapping Borneo

Mid-term results

Project objectives

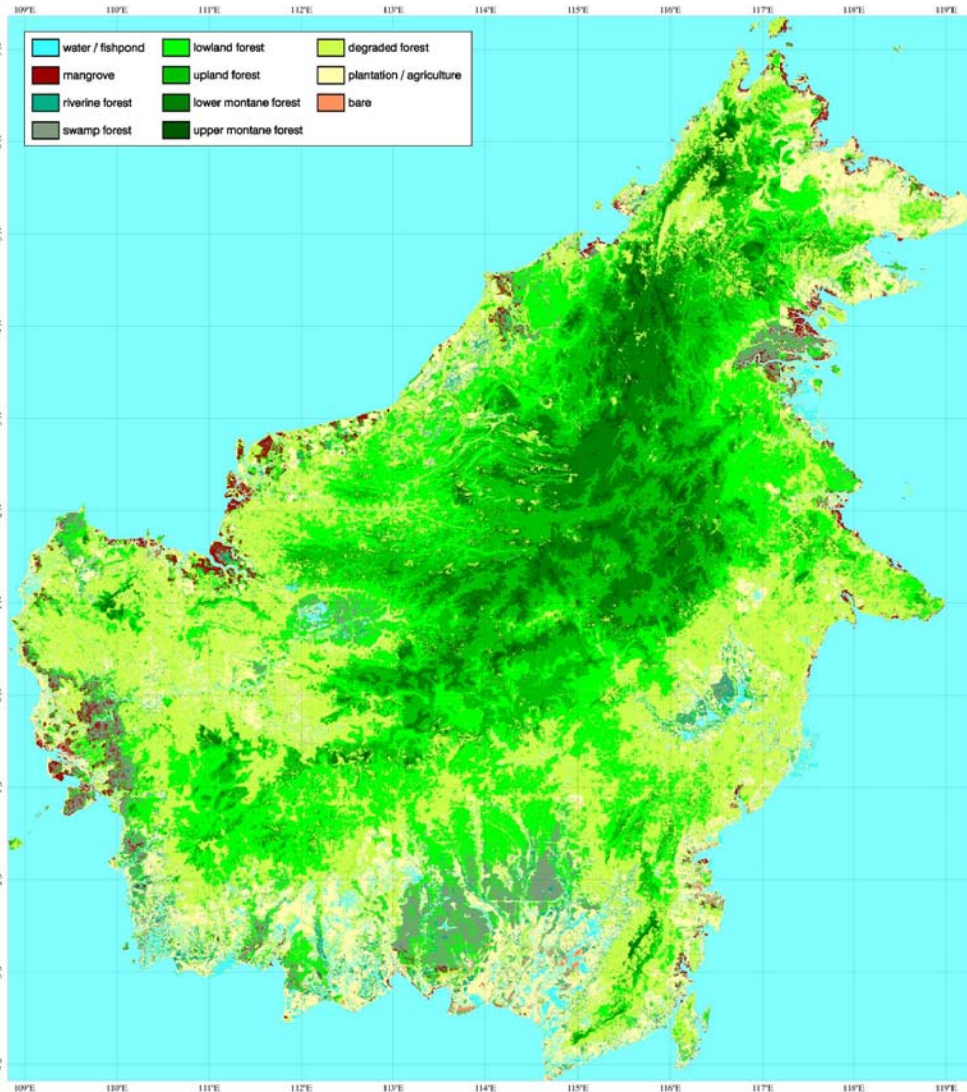
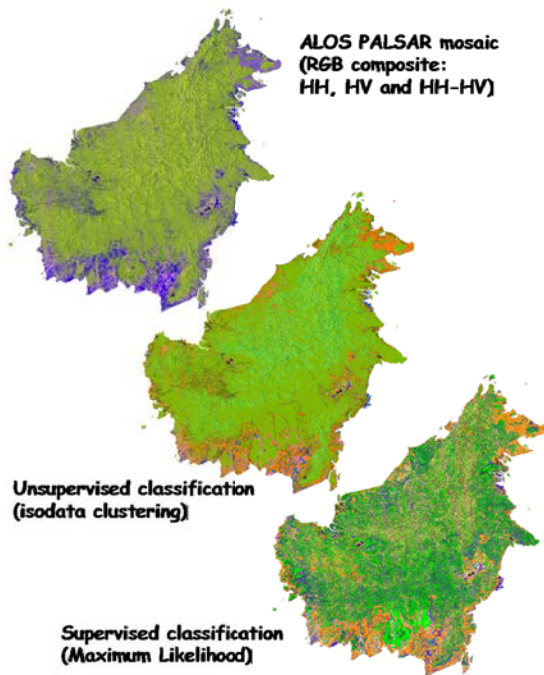
Production of continental wide maps of forest and land use/cover for tropical rain forest areas, at 50m resolution. It is pursued to develop a methodology to produce consistent yearly updates following the FAO Land Cover Classification System (LCCS).

Results

The map shown is a tentative product at 100m resolution, using the K&C mid-term PALSAR Dual Pol mosaic of Borneo and a MODIS 2007 composite. The PALSAR mosaic seems not to be very suitable for the delineation of secondary forest.

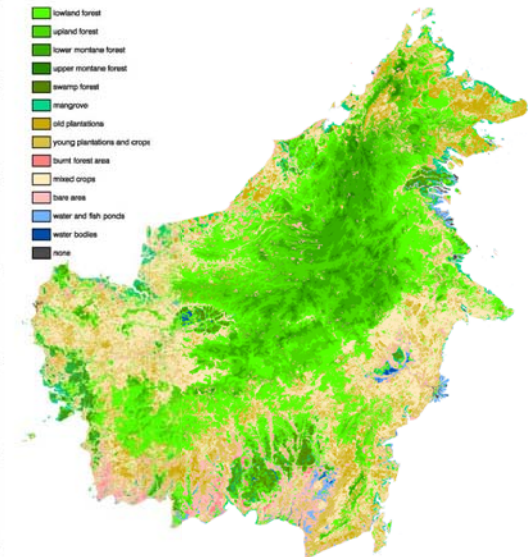
Further development will include the use of multi-temporal strip data and the assessment of the added value of other data sources, like MODIS.

It is noted that this first example is produced with standard ENVI routines and not, yet, with the dedicated software routines (as used for the Central Kalimantan poster), which is expected to refine the map considerably.



ALOS PALSAR data used:
K&C ALOS PALSAR Dual Pol (HH-HV) mosaic of Borneo, 50m resolution

Other data sources:
SRTM 90° elevation data
LULC classification SarVision based on MODIS composite 2007 (MODIS work in collaboration with WWF in the framework of the Heart of Borneo project, funded by WWF Netherlands)



LULC map 2007 based on MODIS



Rob Verhoeven & Vincent Schut
SarVision, The Netherlands
verhoeven@sarvision.nl / schut@sarvision.nl
&
Dirk Hoelman
Wageningen University, The Netherlands
dirk.hoelman@wur.nl