

Product Box F-2 – Boreal Land Cover Classification and Land Cover Change Product Box F-9 – Boreal Disturbance Mapping

Project objectives/K&C Products

(LCM6/FCM5): Methods for integration of Forest and Land Cover Change theme to improve and update existing land cover products in the boreal zone. Thematic classification for Siberian Taiga based upon dual polarisation dual polarisation PALSAR data, with 2007 being the intended base year.

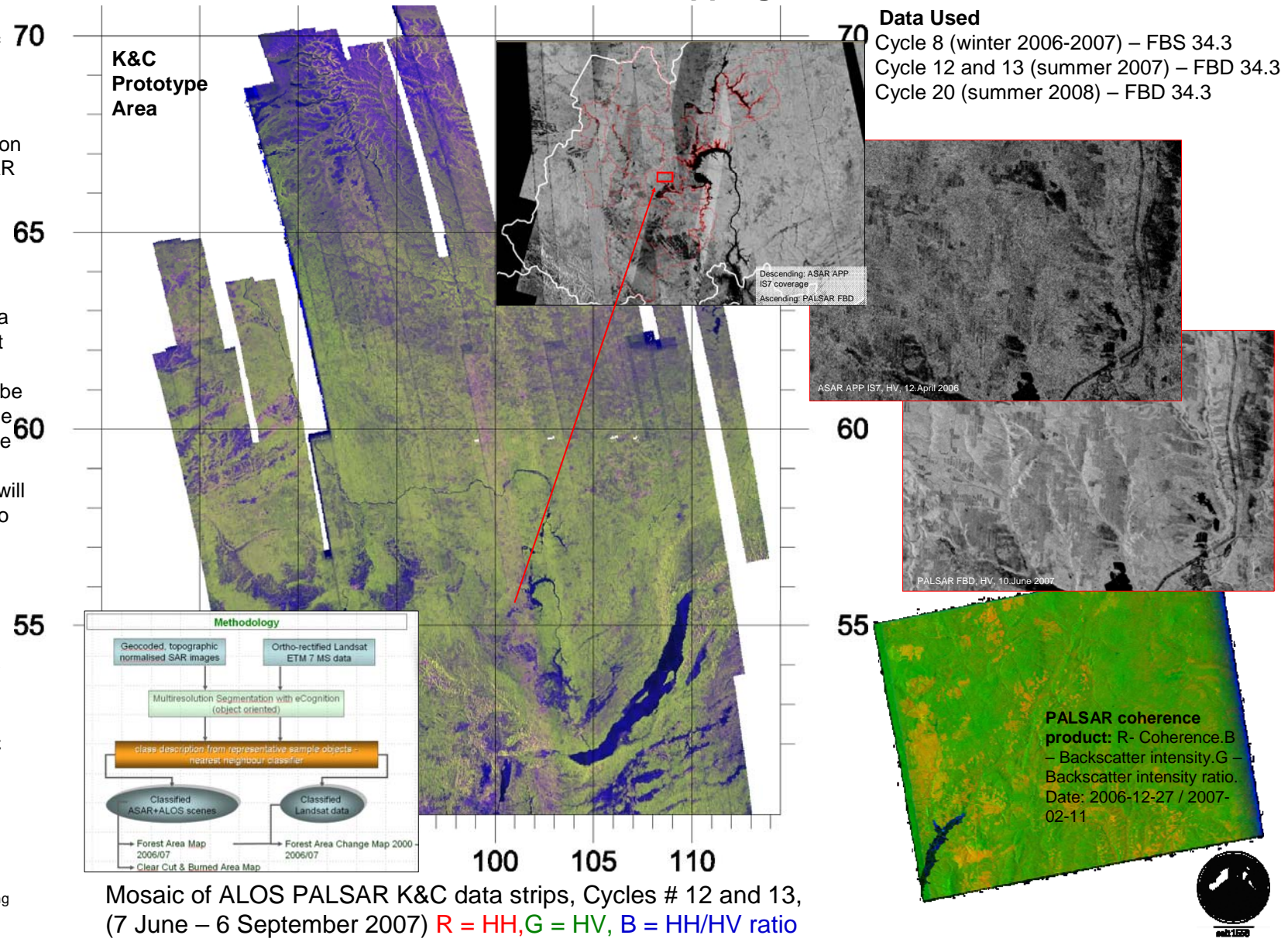
FCM6) Maps of boreal forest

disturbances : High resolution maps of forest disturbances derived from ALOS PALSAR single- and dual-polarization data will assist local forest authorities for forest cover changes monitoring and carbon balance computation. The maps will also be used for land cover and land cover change assessments both within the K&C Initiative and in other activities within the global change research community. The maps will also be integrated with land cover maps to improve regional products.

Results

Data quality is excellent. PALSAR scenes can be used to estimate regrowth status ("time machine" factor for K&C Product: Boreal Disturbance Map). PALSAR scenes can be used to validate ASAR results from the years before (K&C Product: Boreal Land Cover and Change Map).

Maurizio Santoro*, Carolin Thiel, Christian Thiel, Reik Leiterer, and Chris Schmillius, Friedrich-Schiller-University Jena, Department for Earth Observation, Loebdergraben 32, D-07743 Jena, Tel. +49(0).3641.9488-80/-81 Fax-82. Gamma Remote Sensing Company, Bern, Switzerland.
Corresponding Author: c.schmillius@uni-jena.de



Mosaic of ALOS PALSAR K&C data strips, Cycles # 12 and 13, (7 June – 6 September 2007) R = HH, G = HV, B = HH/HV ratio

