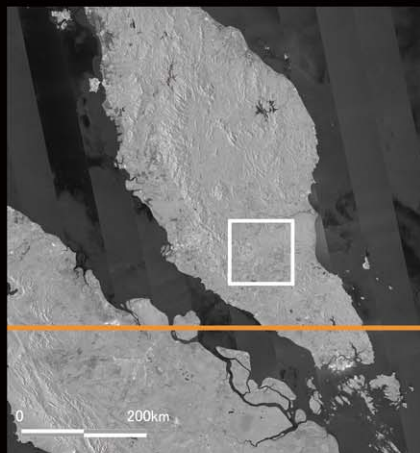
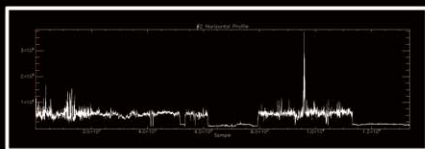


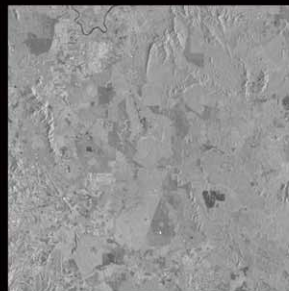
Kyoto and Carbon Project-A Global forest and environmental monitoring using ALOS PALSAR

Japan Aerospace Exploration Agency, Earth Observation Research Center

Sensor : PALSAR
 Mode : FBD 34.3HH
 Orbit : RSP433~455
 Obs. Date : June-July, 2007
 Map Projection : EQR
 DEM for Ortho-rectification : SRTM



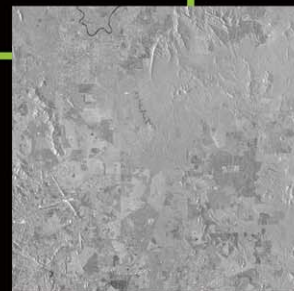
Pash Forest area



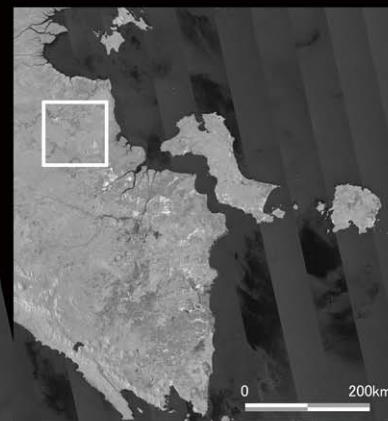
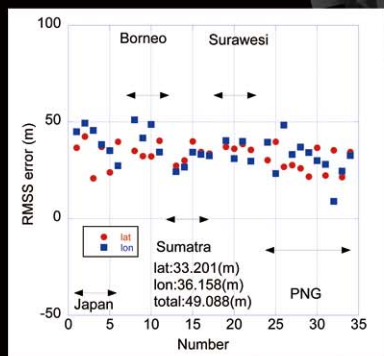
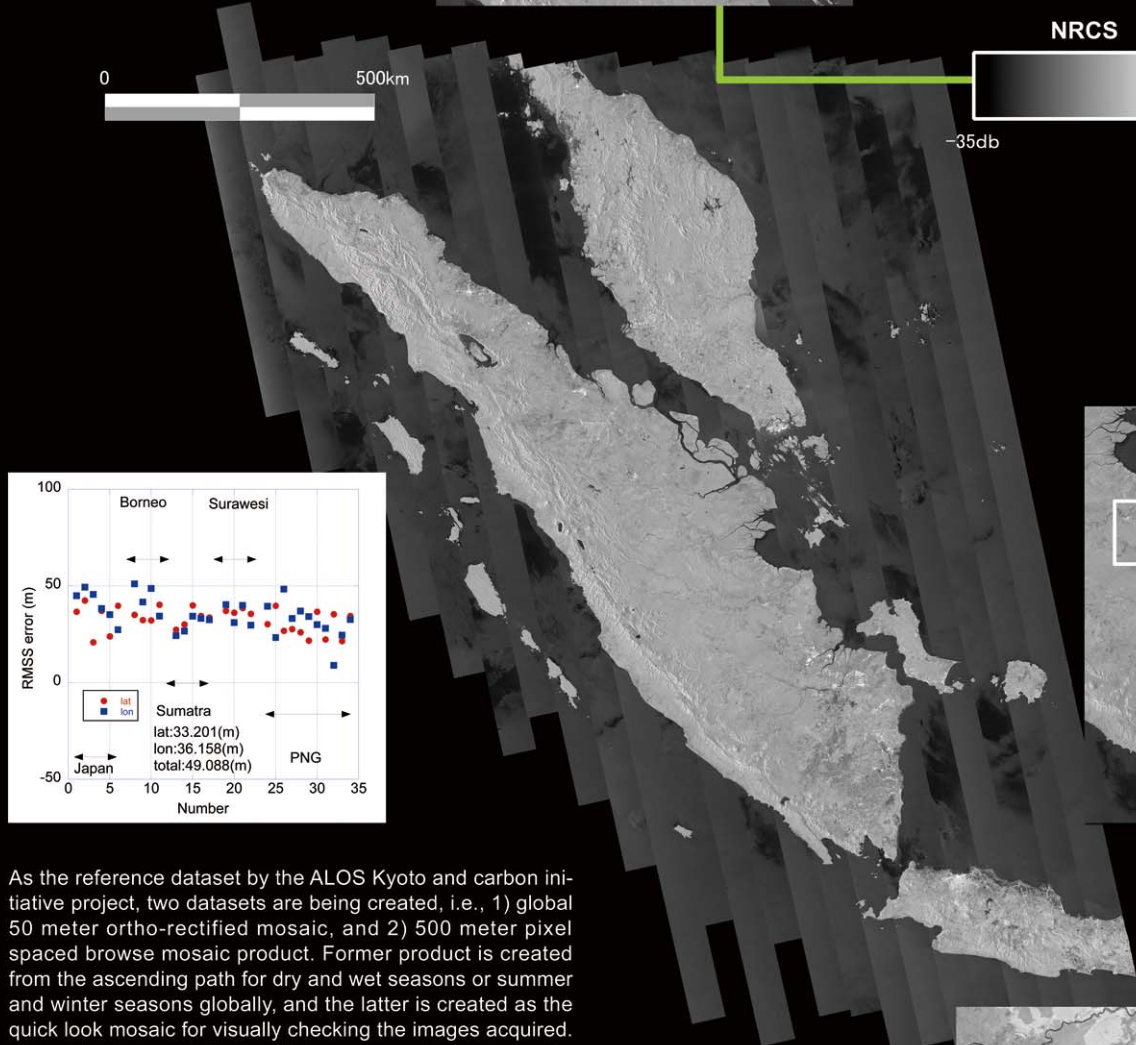
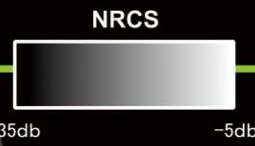
JERS 1993



JERS 1998



PALSAR 2007

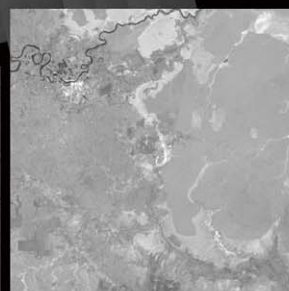


0 200km

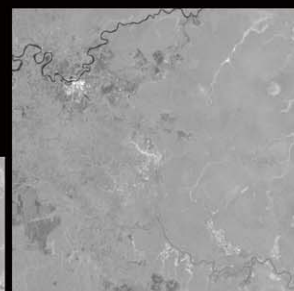
As the reference dataset by the ALOS Kyoto and carbon initiative project, two datasets are being created, i.e., 1) global 50 meter ortho-rectified mosaic, and 2) 500 meter pixel spaced browse mosaic product. Former product is created from the ascending path for dry and wet seasons or summer and winter seasons globally, and the latter is created as the quick look mosaic for visually checking the images acquired. Except for the resolution, both images can be converted to the normalized radar cross section in decibel. These images can be updated to this home page as they are created and they can be visualized by the following methods. The main purpose of the ALOS Kyoto and Carbon initiatives are to interpret the forest originated carbon quantity and its changes, and monitors the global land changes for forest, wetland, and desert area. Using this home page, the current earth environmental change can be observed.



JERS 1993



JERS 1998



PALSAR 2007