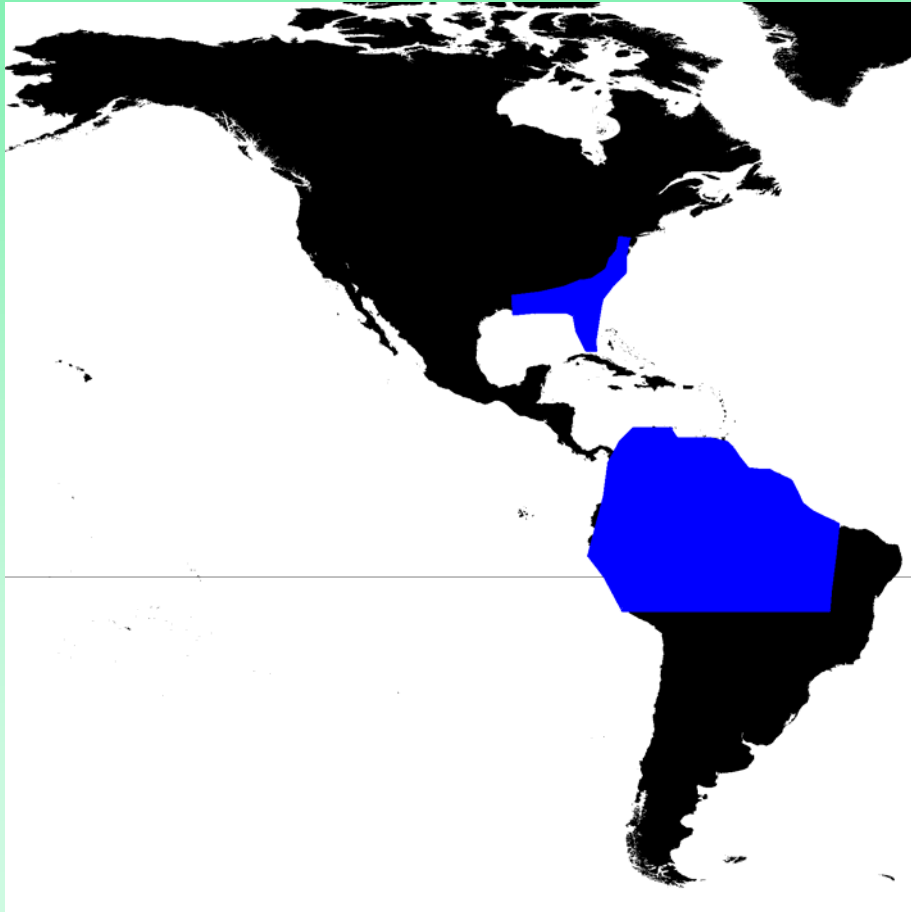


# ALOS K&C Product Update for UCSB



Laura Hess

Institute for Computational  
Earth System Science

University of California  
Santa Barbara

## Products for northern South America (Scan\_G1) and Southeastern United States (Scan\_F4)

- Wetland extent and vegetation structure
- Seasonal monitoring of inundation and vegetation

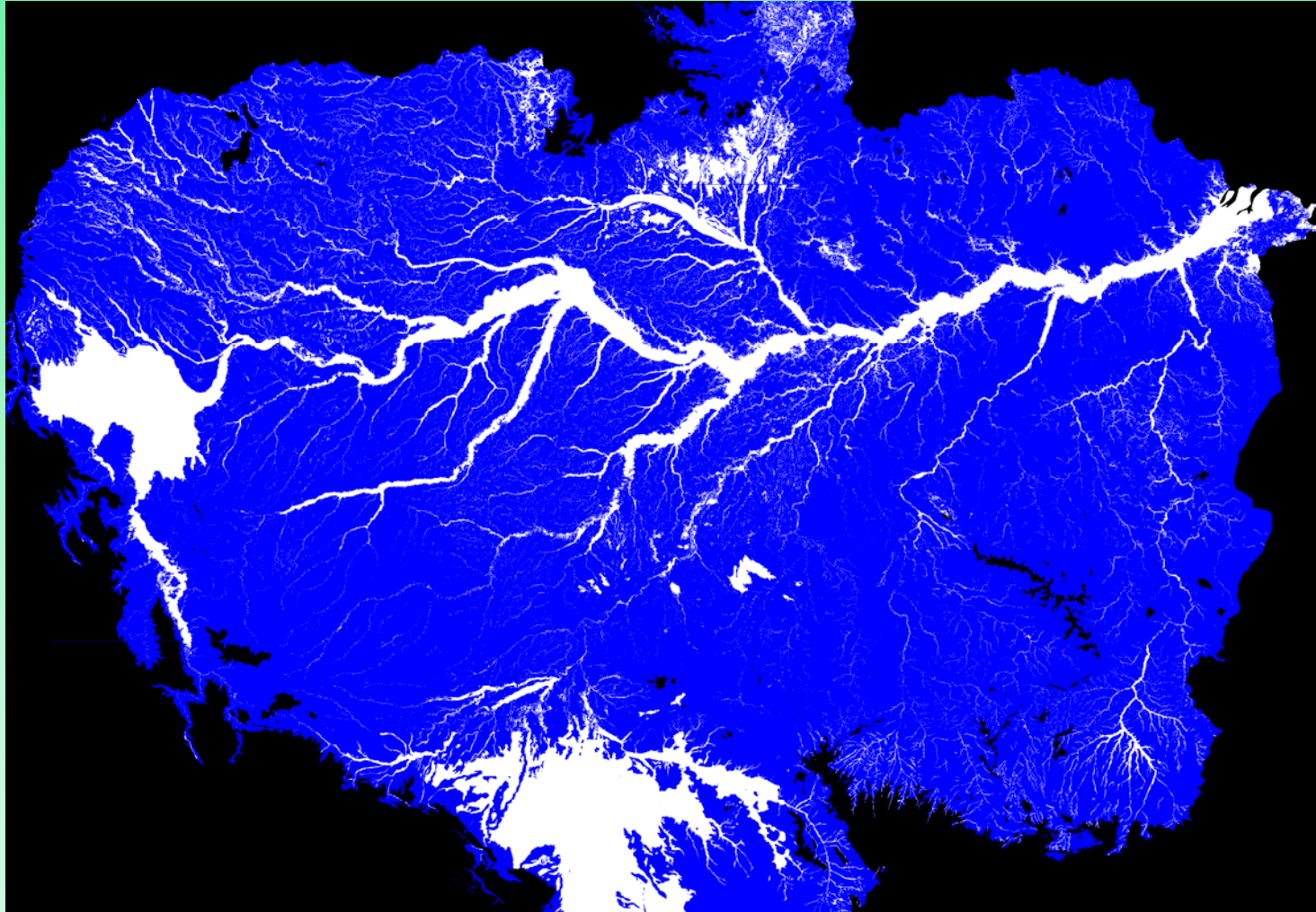
### Applications

- **Carbon cycle:** modeling of CH<sub>4</sub> and CO<sub>2</sub> emissions
- **Conventions:** wetland inventory for Ramsar and Convention on Biodiversity
- **Conservation:** SAR-based habitat mapping for reserve location and conservation planning on the varzea

### Collaborators

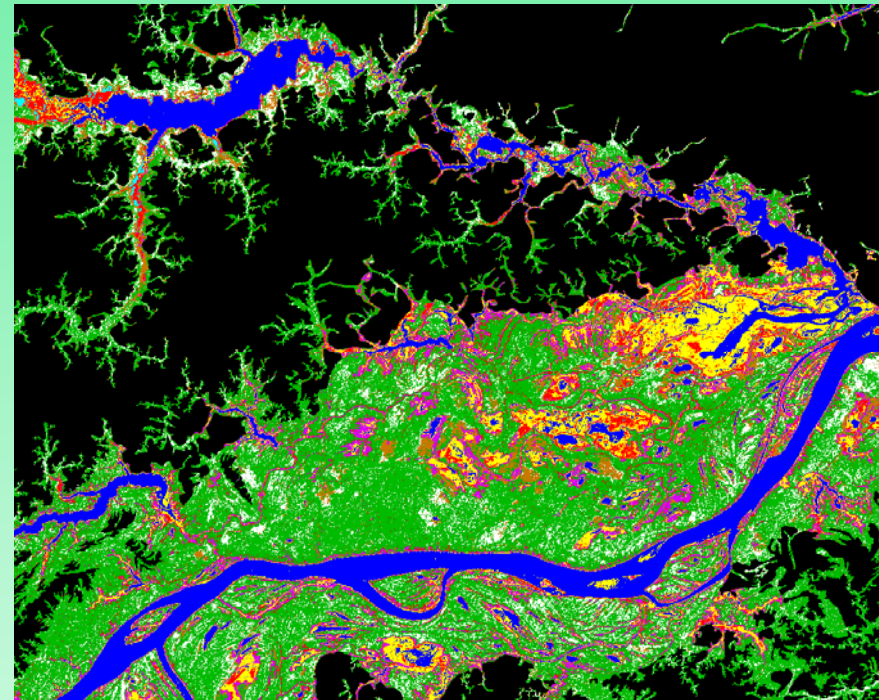
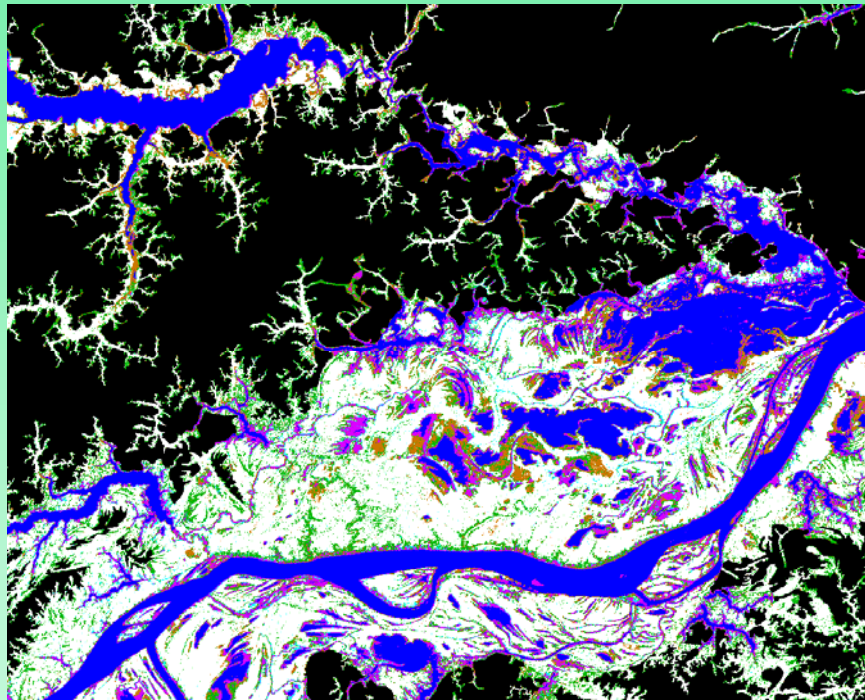
- **KC agreement:** Maycira Costa, Bruce Chapman, Evelyn Novo (INPE), Bruce Forsberg (INPA), Fernando Pellon (Petrobras)
- **Pending FAPESP proposal:** Ana Albernaz (Goeldi Museum), Dilce Rossetti (INPE), Bob Pressey (University of Queensland)
- **Pending NASA-MEASURES proposal:** Kyle McDonald, PI
- **Other KC studies:** Lucas, Hoekman, INPE, Rebelo

# Amazon Basin Wetlands Extent (100 m)



Amazon Basin below 500m: wetlands 17%, uplands 83%

# Wetland habitats at Cabaliana site, high and low water stages



Water



Bare/herbaceous, non-flooded



Herbaceous, flooded



Shrub, non-flooded



Shrub, flooded



Woodland, flooded



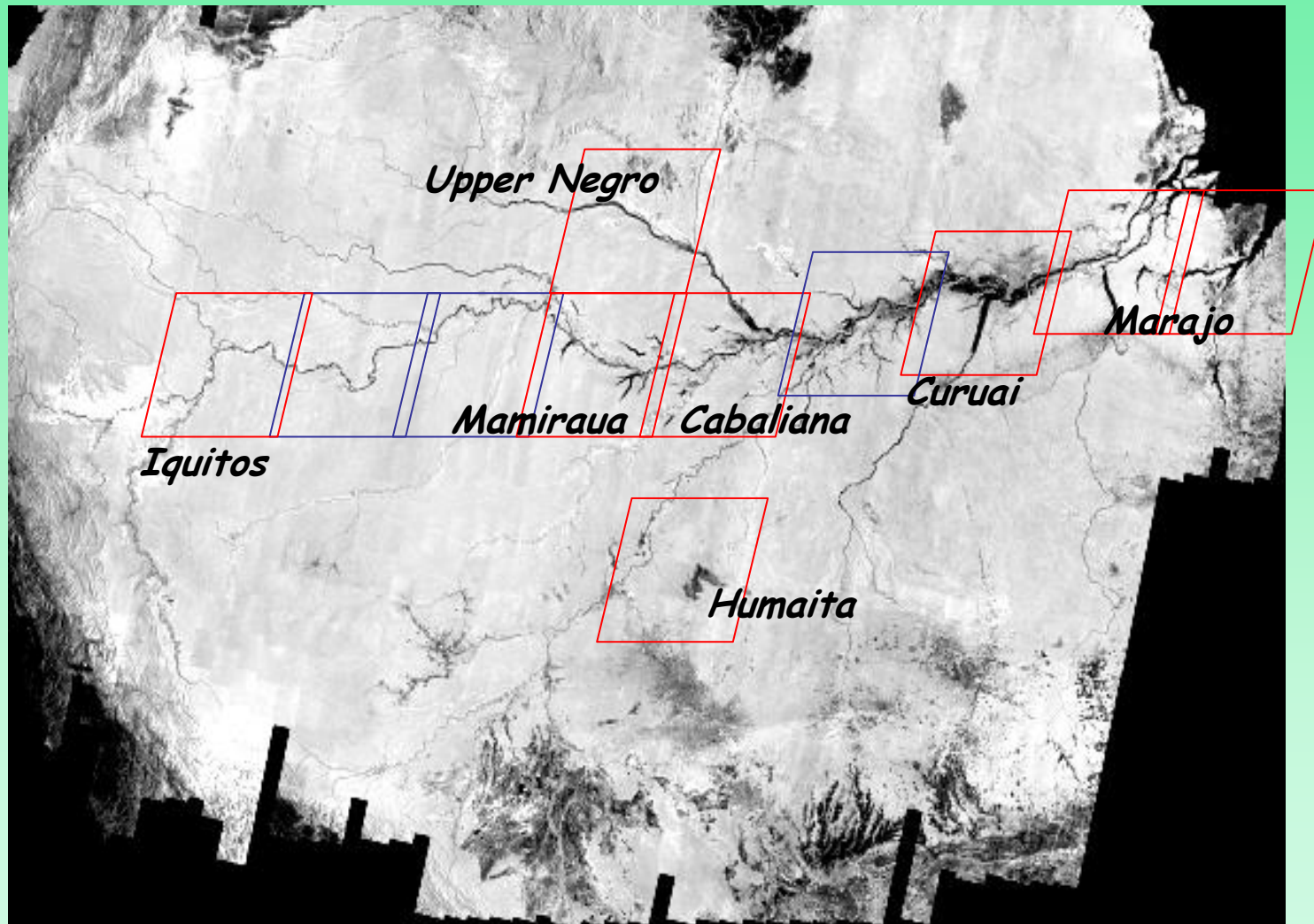
Forest, non-flooded



Forest, flooded



# Prototype Areas for Scan\_G1



# Prototype Area for Scan\_F4



*Altamaha River, Georgia*

# Data Acquisition Schedule

## Amazon (G1)

- ScanSAR every cycle, 7-22 (Nov 2006 - Oct 2008)
- solar flares peaking Nov-Dec 2006 seriously impacted Amazon; assume actual coverage begins cycle 8-9 (Jan 2007)
- fine beam dual-pol, cycle 12-13, Jun 2007 - Aug 2007
- Existing request: fine beam SLP, 2646 scenes, 1 coverage; wide beam SLP, 170 scenes, 14 coverages (=2382 scenes)

## Southeast US (F4)

- planned acquisitions cycles 9-16 (Jan 2007 - Jan 2008)
- Existing request: wide beam SLP, 156 scenes, 8 coverages

## Data Processing Schedule

- Currently using ftp but plan to switch to Aspera
- Scenes processed so far (all G1 ScanSAR):

RSP397\_SLT20070513WB1271HH5\_W0475397001-02\_005

RSP400\_SLT20070518WB1271HH5\_W0480400001-03\_005

RSP403\_SLT20070523WB1271HH5\_W0485403001-04\_005

RSP406\_SLT20070528WB1271HH5\_W0490406001-04\_005

RSP430\_SLT20070522WB1271HH5\_W0484430001-03\_003

RSP433\_SLT20070527WB1271HH5\_W0489479001-03\_003

RSP436\_SLT20070601WB1271HH5\_W0494528001-02\_003

RSP454\_SLT20070516WB1271HH5\_W0478454001-03\_003

- Do not need scenes that are corrupted by solar flares. Do they have to be processed first to tell how much image quality has been affected or this there a way of flagging before completely processed?



# AGAP Questions

## ALOS Geoscience Application Processor (AGAP) - K&C View Port

### Information:

Test run.

(Status map was updated on 2007-06-10 23:46:39(UT))

### Login

K&C User ID

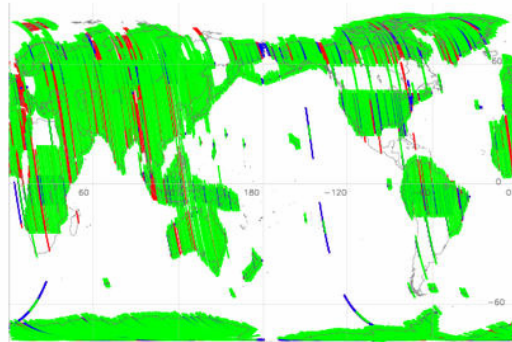
Password

Login

### Links

Page : [1](#) [2](#) [3](#) [4](#) [5](#) [6](#) [7](#) [8](#) [9](#) [10](#) [>>>](#)

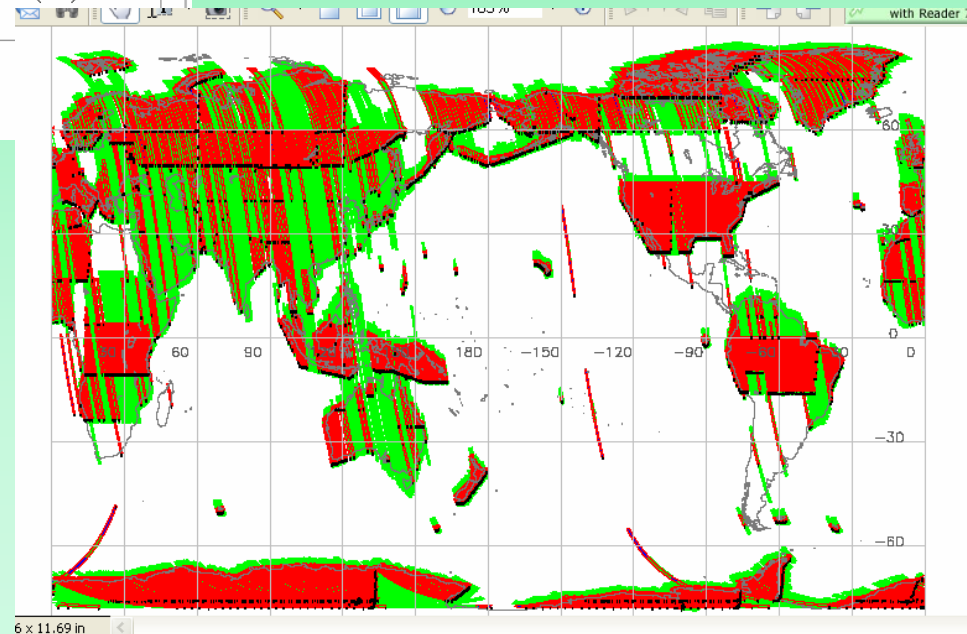
2006.12.06---2007.01.21 (cycle:8)



■ : Requested passes  
(1984)

■ : Scheduled passes  
(1329)

■ : Browse images  
generated (982)



Per Mukaida-san:

EORC will look at

1) indexing browse images by cycle  
rather than by page number

2) removing red outlines that  
obscure underlying coding unless  
highly magnified.

Will soon have access to browse  
images.

ALOS KC 8

11-13 June 2007

# Data Analysis and Delivery Schedule

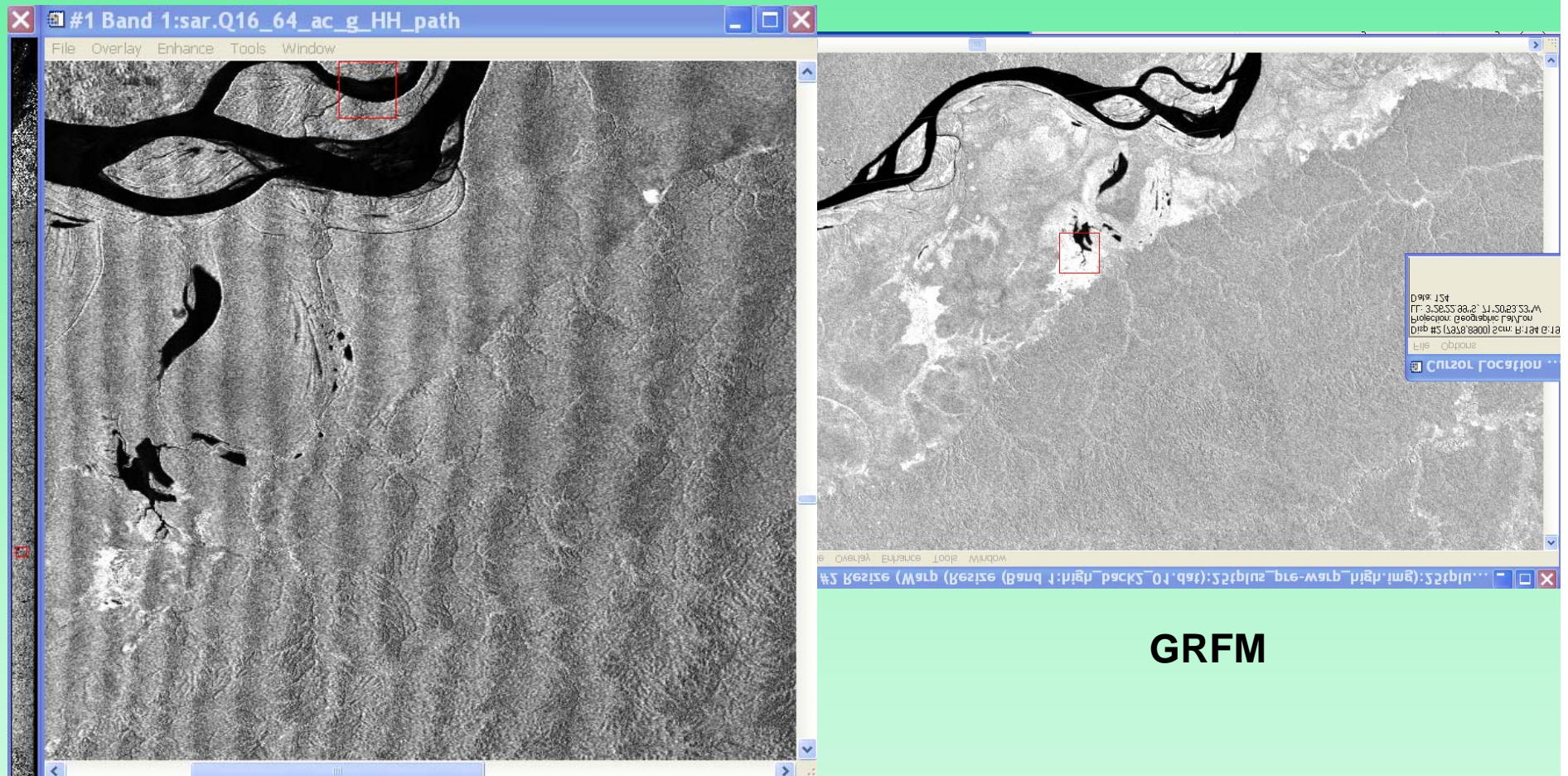
## Amazon (G1) and Southeast US (G4):

- Preliminary products for prototype areas: Jan 2008
- Final products for prototype areas: Jun 2008
- Preliminary extension to full ScanSAR regions: Jan 2009

## Proposed Revision to Processing Request

- For a **small** test region, for 2 cycles (i.e. 9-10 for Amazon), UCSB will request SLP and ORT-Gec; UCSB will mosaic ORT-Gec
- JPL will mosaic from SLP data (using ASF tool?)
- Results of SLP-based and ORT-based mini-mosaics for test region will be compared
- Final decision on requested format within a month of receiving test data from EORC

# Ortho Example



**GRFM**

RSP100\_ORT20060821FBD415HH0\_W0210146001-02\_001