

PALSAR K&C Data Dissemination

Data Processing, FTP/ASPERA and AGAP

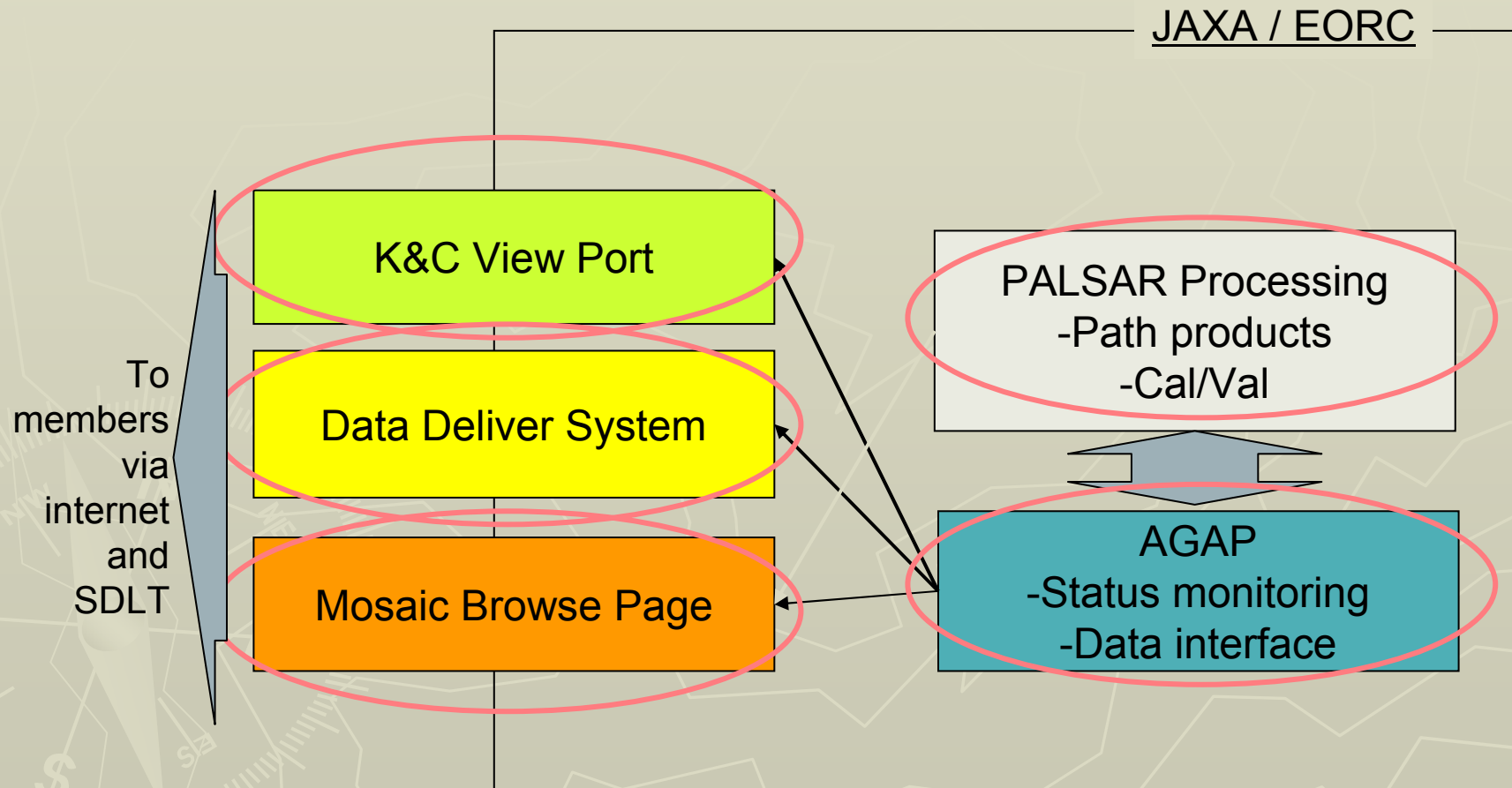
ALOS K&C 8th Sci. Team Meeting

Akira MUKAIDA, Toshio OKUMURA, Daisuke SANGO(RESTEC),
Takeo TADONO(JAXA)

Contents

- ◆ Topics Overview
- ◆ Data Producing Schedule
- ◆ Data Dissemination
 - FTP
 - ASPERA
- ◆ Status of AGAP
- ◆ Summary

Topics overview



Data Producing Schedule

	Number of Paths	Ratio
Requested observation	2134	100.00 %
Could not observed *1	688	32.24 %
Error in Processing *2 (Brownses or Products)	178	8.34 %
Processed	632	29.62 %
Waiting for Processing *3	636	29.80 %

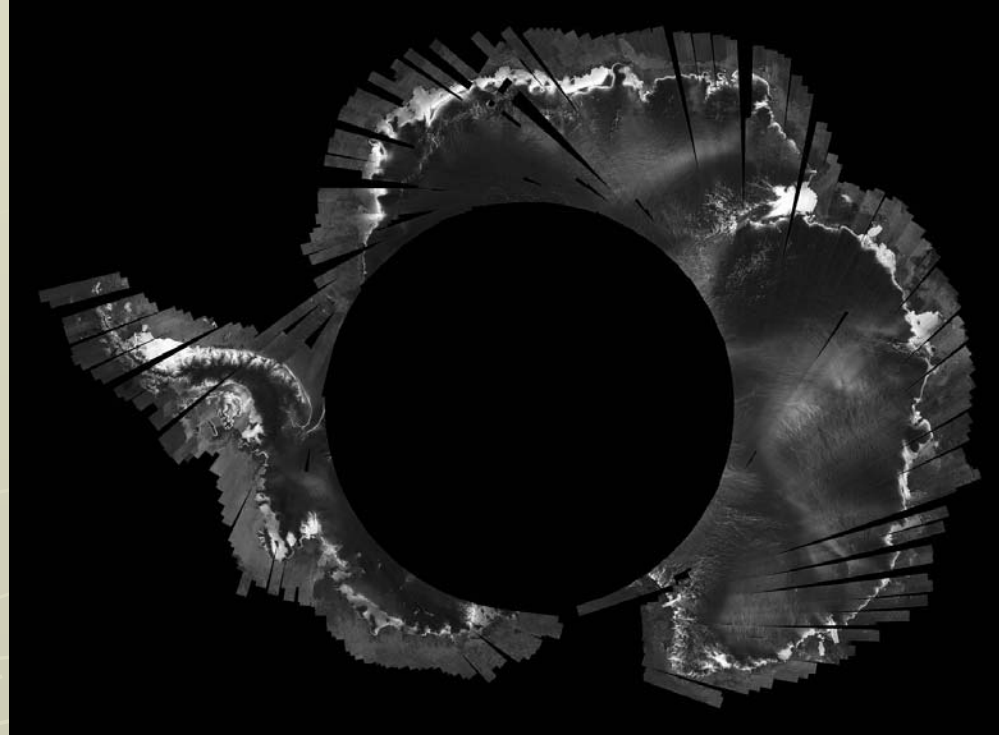
Jun. 7 '07

*1: Due to conflict of observation request or some problem in satellite operation.

*2: Due to data or software problems. Will be processed by reprocessing.

*3: Data observed in earlier cycles (before cycle 10). Data will be processed.

Data Producing Schedule



Browse mosaic to browse processing status.

- ◆ Path product can be processed 1020 Path/Cycle.
- ◆ There are 1416 paths for cycle 12 and 2286 paths for cycle 13 of request which are over our limitation of processing.
- ◆ It will be catch up after cycle 13. Numbers of requested paths after cycle 13 are under the limitation.

Data Dissemination

- ◆ K&C products are provided by both FTP and ASPERA
 - ASPERA is 2 to 10 times faster than FTP.
 - ▶ More than 10 Mbps while 4Mbps for normal FTP.
 - Products are copied to the server automatically.
- ◆ SDLT media will be shipped.

Data Dissemination

◆ Normal anonymous FTP to following URL.

- KC member personal directories >

ftp://ftp.eorc.jaxa.jp/pub/ALOS/KC/hidden/<personal_dir>

◆ ASPERA connection

- KC member personal directories >

http://janus.eorc.jaxa.jp/DL/user/?B=/hidden/<personal_dir>

- ASPERA connect 1.0 client software is required. Can be downloaded from...

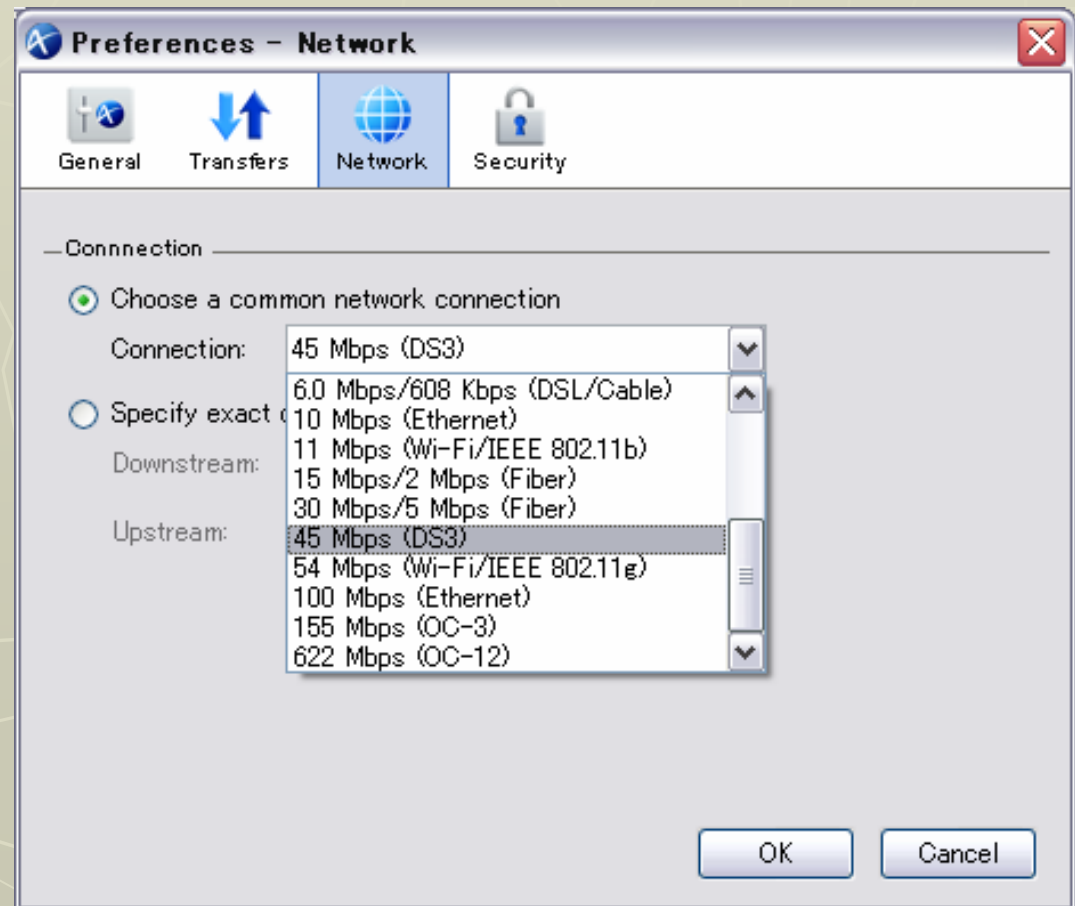
<http://www.asperasoft.com/products-download.html>

Tips for ASPERA

◆ Maximize transport speed.

- Launch ASPERA connect.
- Choose preferences from indicator on task bar.
- Default speed on connection is “6.0 Mbps”.
- Select faster transport speed.
Ex. 45 Mbps

We are setting maximum speed as 100 Mbps for sever side.



Status of AGAP

◆ Product processing status

- No major problem. System is stable.

◆ Product archive status

- Enough resources for product dissemination.
 - ▶ Product can be archived about 1 year in file sever for K&C.

◆ Preparation for AGAP2

- AGAP will be up dated in late 2008JFY.
 - ▶ 64 bit processor for every node.
 - ▶ Data production for K&C community will be considered including online data transport between EOC-EORC.

Status of AGAP (KC View Port)

ALOS Geoscience Application Processor (AGAP) - K&C View Port - Microsoft Internet Explorer

ファイル(E) アドレス(D) http://www.eorc.jaxa.jp/ALOS/opn/ 移動

ALOS Geoscience Application Processor (AGAP) - K&C View Port

Information:

Test run.

Login

K&C User ID

Password

Links

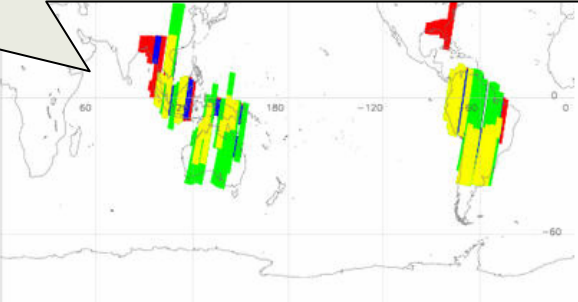
PALSAR Processing Status (Descending passes) - Slant range pass images

Page : . << 1 2 3 4 5 6 7 8 9 10 >>

2007.04.26---2007.06.11 (cycle:11)

Legend:

- Requested passes (168)
- Scheduled passes (82)
- Browse images generated (62)
- Browse + Slant range images generated (48)

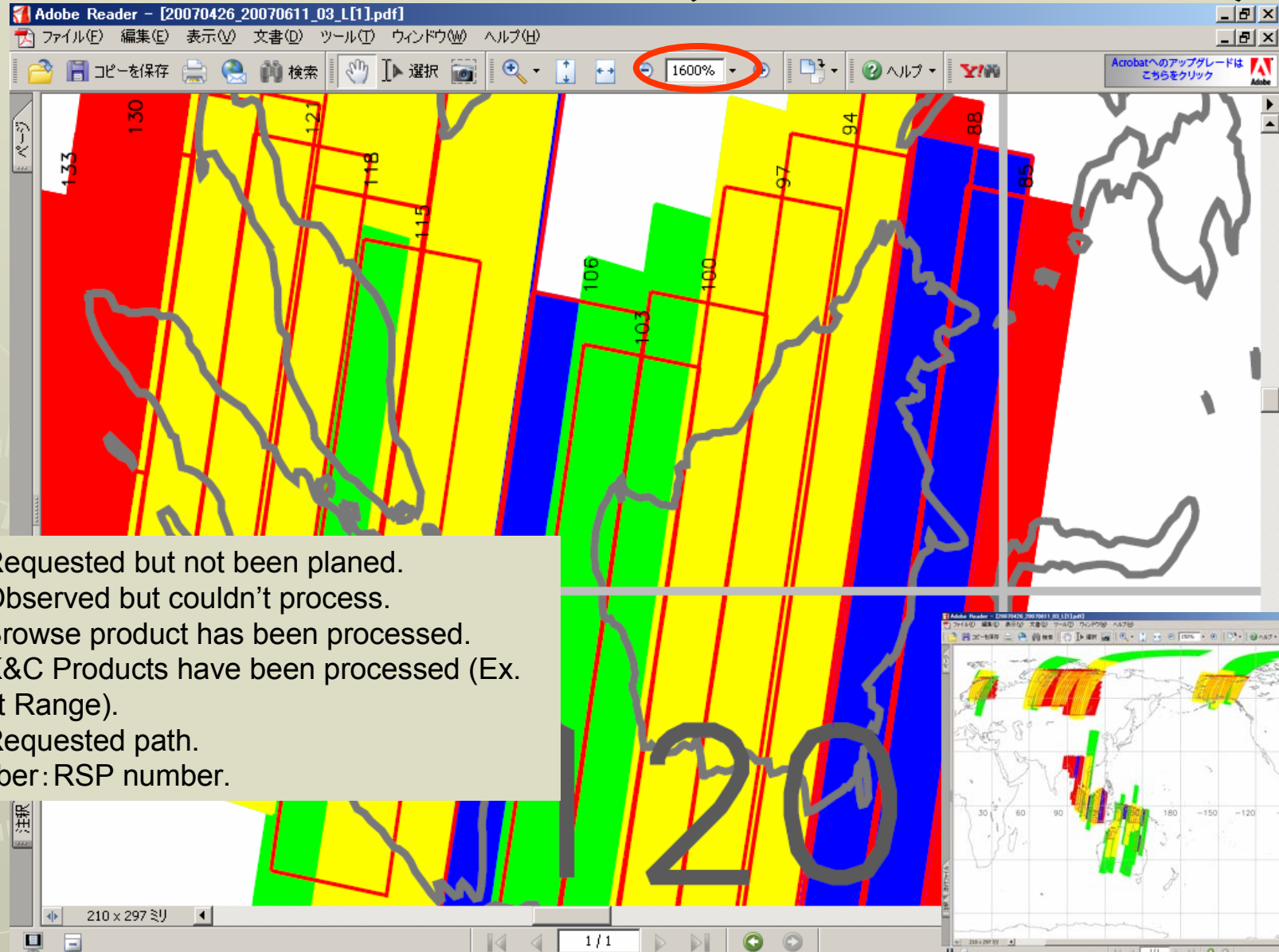


Click on Map to Download and Zoom

[Detailed Information](#)

RSP numbers are added for the downloadable map files (PDF).

Status of AGAP (KC View Port)



Status of AGAP (KC View Port)

Detailed information - Microsoft Internet Explorer
 http://www.eorc.jaxa.jp/cgi-bin/ALOS/opn/AGopn_disp_detail.cgi?page=17+frame=02+userDir=-comm-+CSVfile=search_02_20070605144528_...

PALSAR Processing Status (Ascending passes) - Slant range pass images

Search

Status: (Any Selection)

Term Select: Date start 2007 / 01 / 22 --- end 2007 / 03 / 09
 Cycle min --- max
 Any

RSP: min --- max (* 1 --- 671)

Obs. Mode: (Any Selection)

Proc. Level: (Any Selection)

page : << < 13 14 15 16 17 18 19 20 21 22 > >> /

Download Table Data (CSV)

Status	Obs. Data	RSP	Start Lat of Pass image	End Lat of Pass image	Obs. Mode	Proc. Level	Pol.	DownLink Segment No.	Data Removal date	Thumbnail
Not Scheduled	20070215	446	-	-	FBS	SLT	HH	-	-	-
Downloadable by ftp	20070215	400	S8.18	N7.14	FBS	SLT	HH	W0388400001-03	20070701	Thumbnail
Writing to media	20070215	400	N54.25	N62.79	FBS	SLT	HH	W0388354001-09	-	Thumbnail
Writing to media	20070215	5	N63.5	N67.39	FBS	SLT	HH	W0388005001-10	-	Thumbnail
Browse images generated	20070214	611	N15.92	N71.94	FBS	SLT	HH	W0387565001-09	-	-

Downlink Segment# added

1 year from up load.

http://www.eorc.jaxa.jp/cgi-bin/ALOS/opn/AGopn_disp_detail.cgi?page=19+frame=02+userDir=-comm-+CSVfile=search_02_20070605144528

インターネット

Summary

- ◆ K&C Products are processed
 - Will be catch up soon for the product which not been processed.
- ◆ Products dissemination has been started.
 - Both normal FTP and ASPERA are working well.
- ◆ AGAP is working well.
 - KC View Port are updated.
 - ▶ Personal View Port will be available soon.
 - Will be updated as AGAP2.
- ◆ Please let us know if you have any inconvenient about the system.