

Forest Cover Change in Selected Illegal Logging Hotspots

B. Rabang, P. Sanchez, N.M. Rocas, D. Montoya and C.I. Rosal

*Department of Environment and Natural Resources, Forest Management Bureau
Forest Geospatial Data Infrastructure Section (DENR-FMB-FGDIS)*

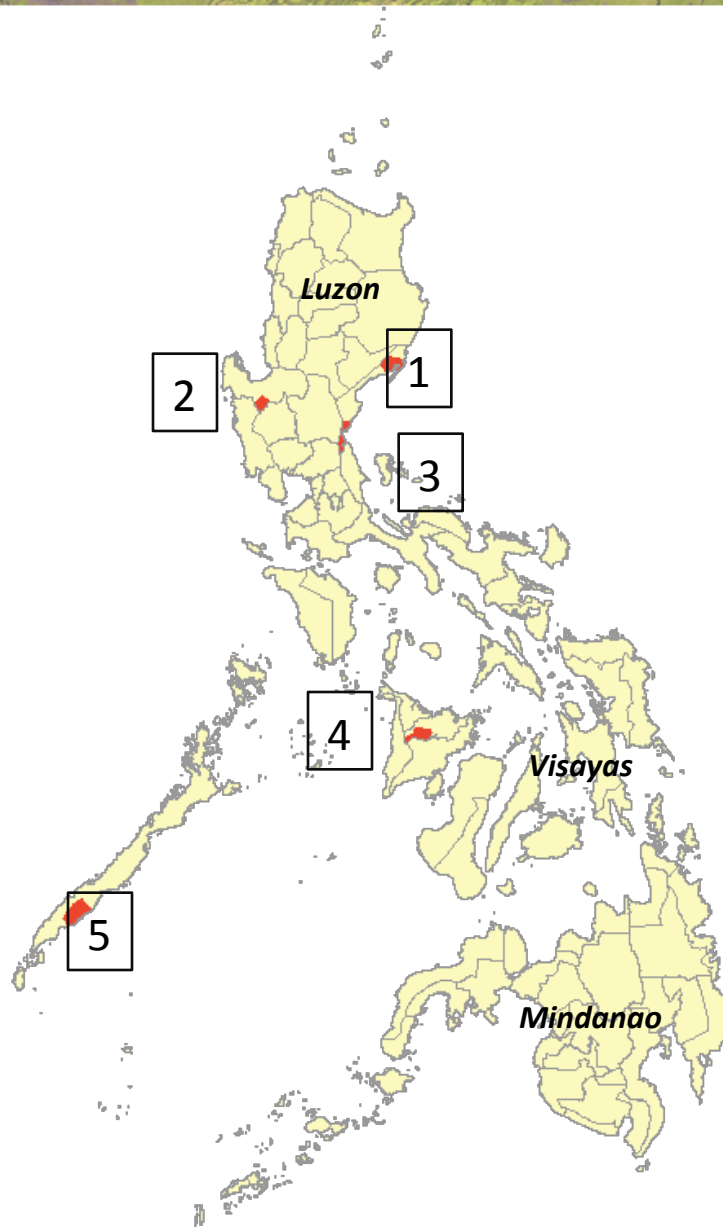
Project outline and objectives

- Not a separate project, but part of the National Forest Monitoring System (NFMS) and REDD+ requirements, which development partners such as GIZ assist FMB in developing
- Administration's priority for the enhancement of forest protection measures (personnel deployment, fund allocation, etc.)
- Assess the forest cover loss (and gain if applicable) in selected municipalities reported for illegal logging activities from 2010-2015.
- Forest/non-forest maps developed by JAXA

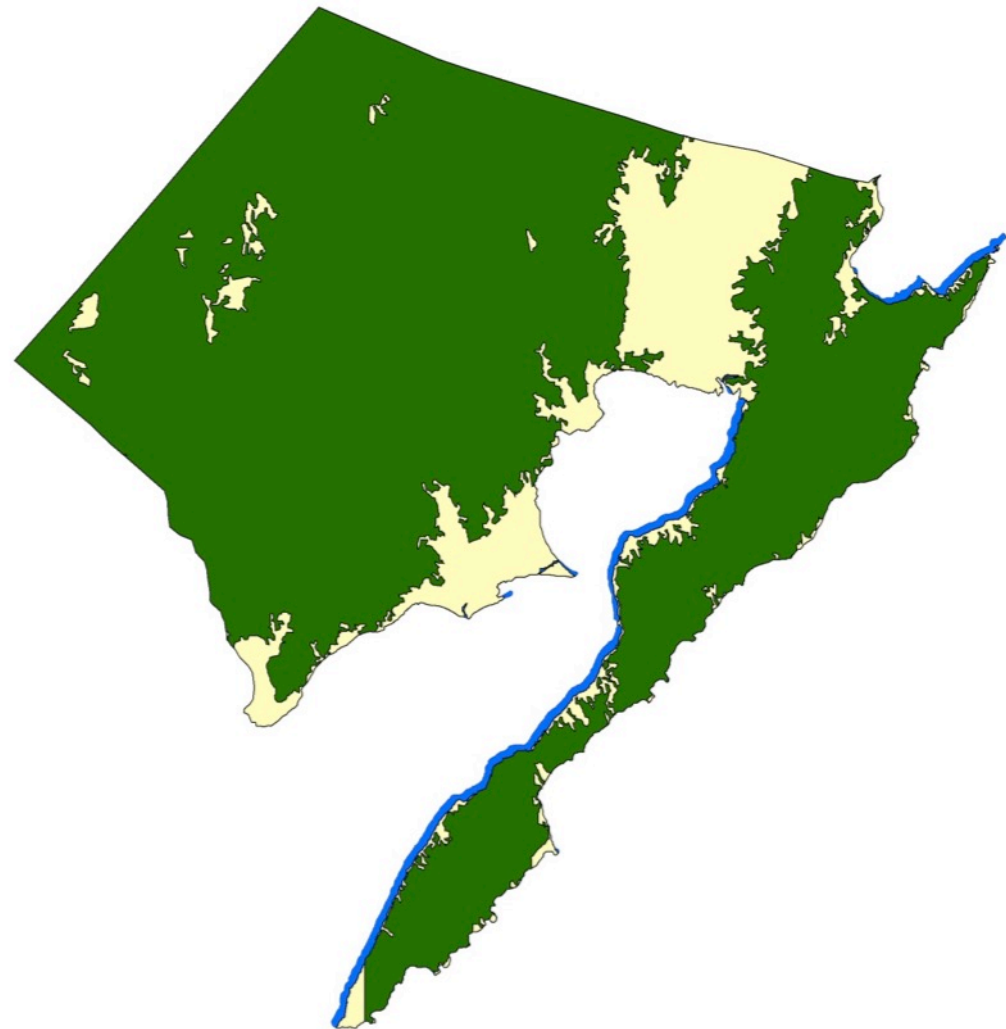
Some Considerations

- Resulting change maps were not yet subjected to any form of validation: estimates on accuracy/errors are not yet performed
- Coconut and palms are not necessarily excluded from the maps.
- The actual location of the hotspot is not indicated in the reports. The best available information on hotspot extent is given at the municipal level.

Project Areas



1. Casiguran, Aurora
2. Mangatarem, Pangasinan
3. Dingalan, Aurora
4. Tapaz, Capiz
5. Brooke's Point, Palawan

Legend

Land Cover	Area in Hectares
Forest	51,325.99
Non Forest	9,757.70
Water	1,091.01
Total	62,174.71

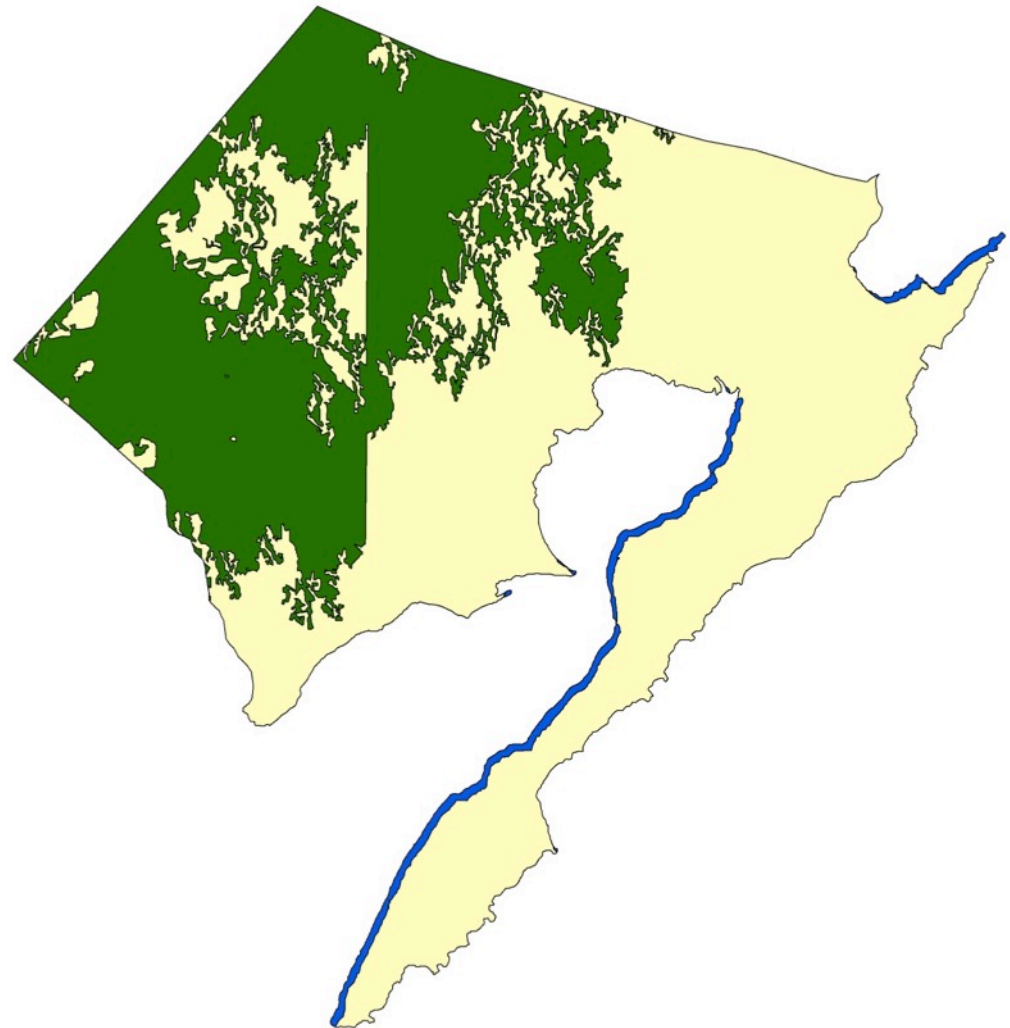
2010

Casiguran, Aurora

Legend

Land Cover	Area in Hectares
Forest	22,939.02
Non Forest	38,177.06
Water	1,058.63
Total	62,174.71

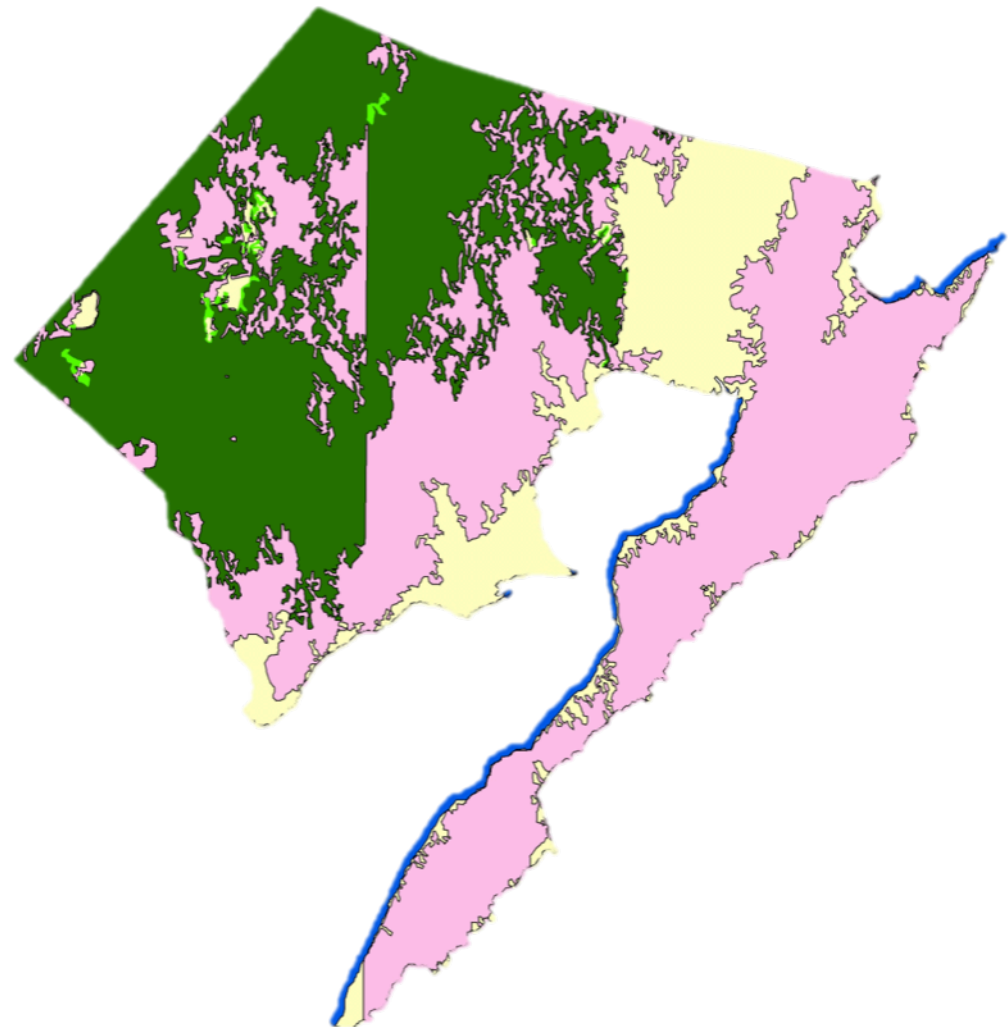
2015

**Casiguran, Aurora**

Legend

Land Cover	Area in Hectares
Forest Gain	171.29
Forest Loss	28,558.26

Change

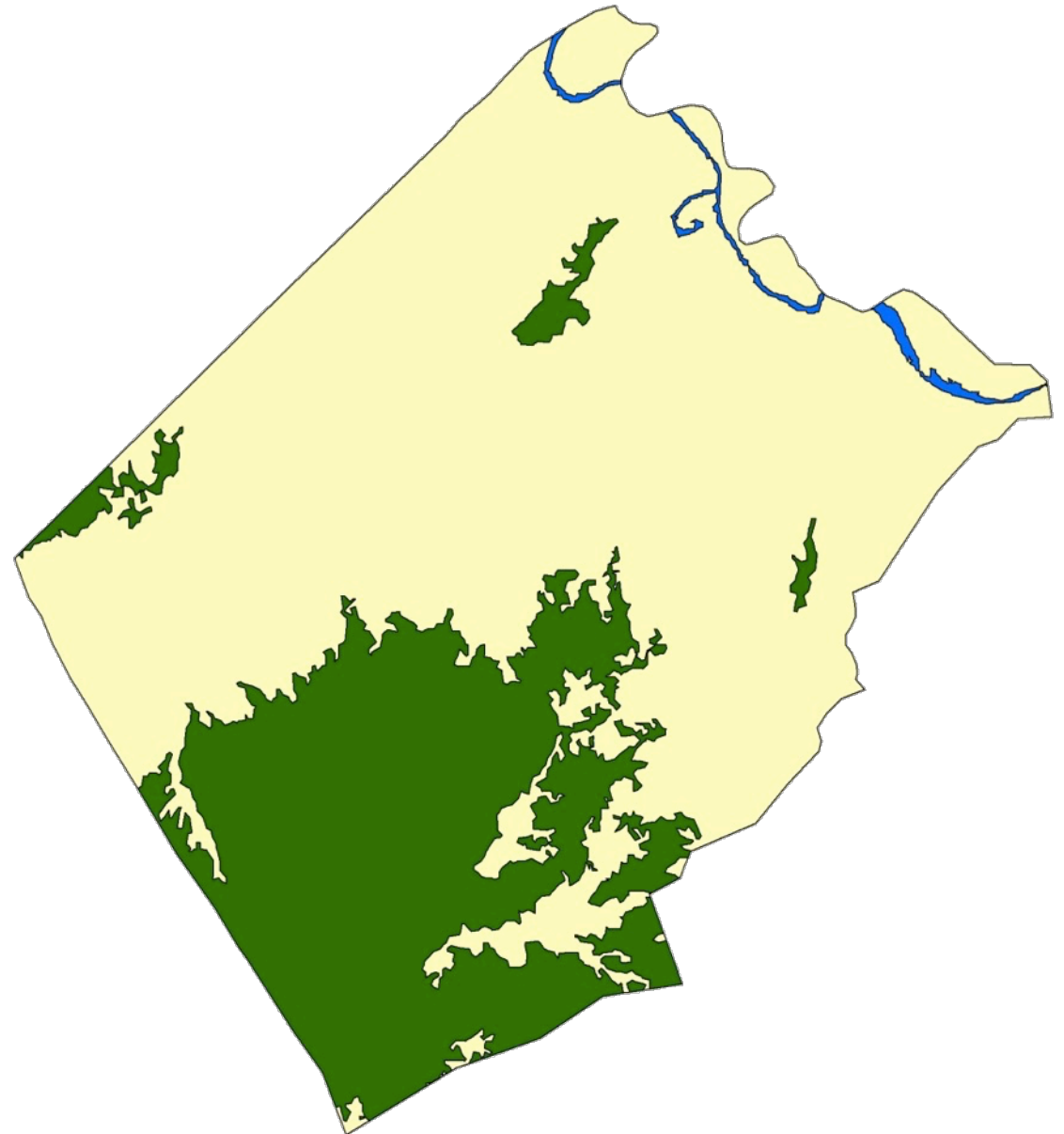
**Casiguran, Aurora**

Legend



Land Cover	Area in Hectares
Forest	8,421.74
Non Forest	21,550.02
Water	203.77
Total	30,175.53

Mangatarem, Pangasinan

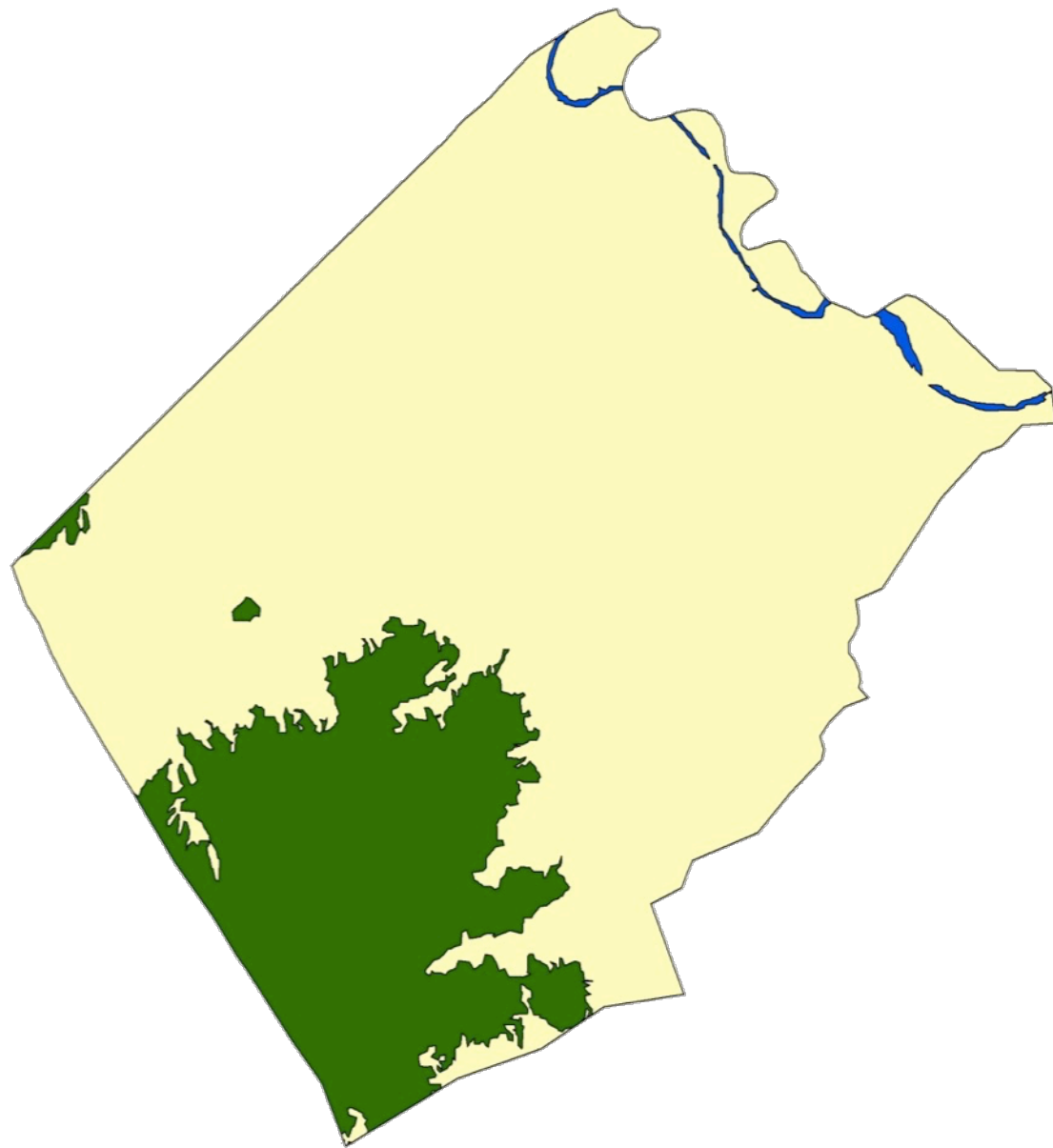


Legend



Land Cover	Area in Hectares
Forest	6,056.74
Non Forest	23,957.51
Water	161.28
Total	30,175.53

Mangatarem, Pangasinan

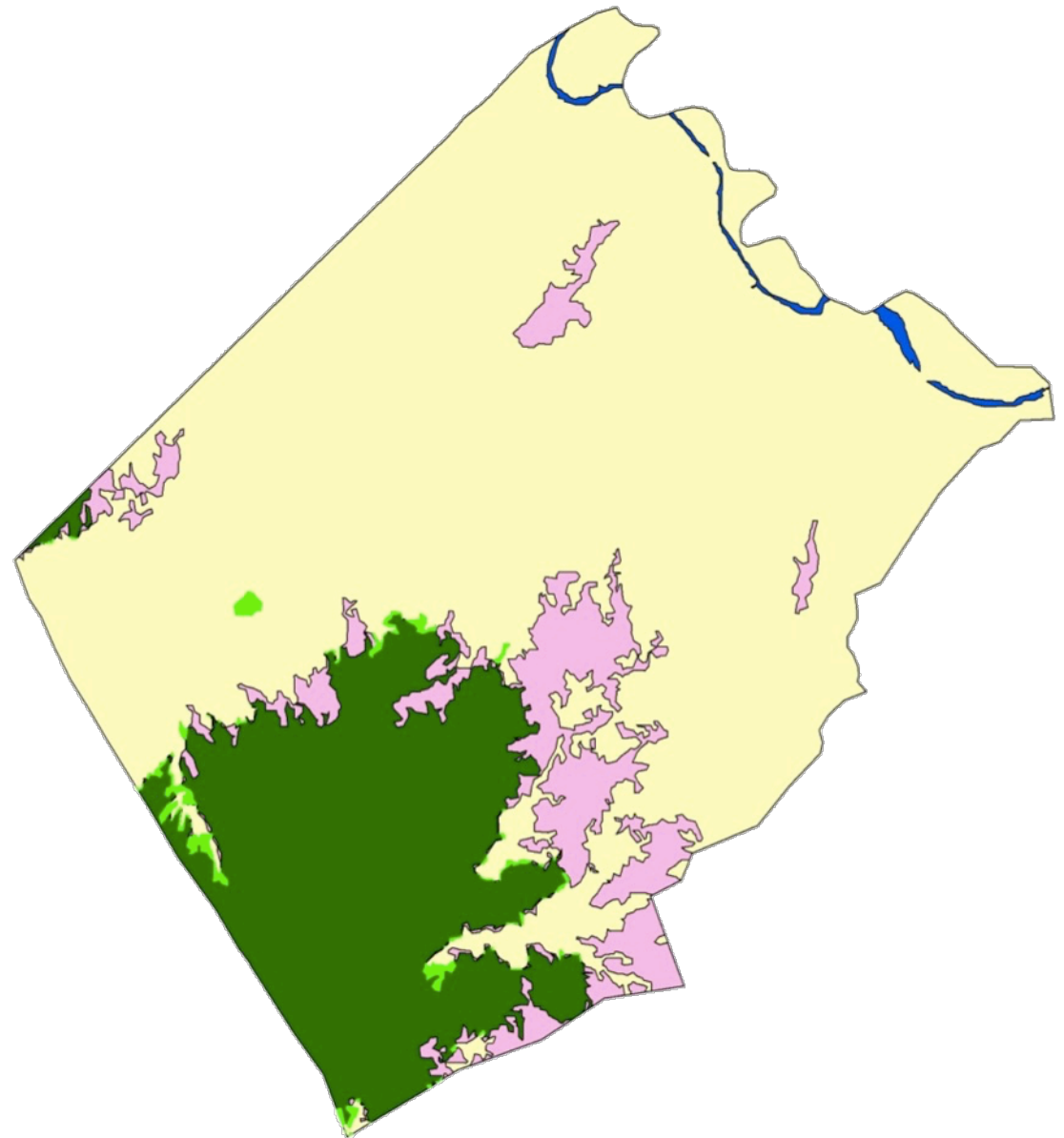


Legend



Land Cover	Area in Hectares
Forest Gain	149.04
Forest Loss	2,514.04

Mangatarem, Pangasinan

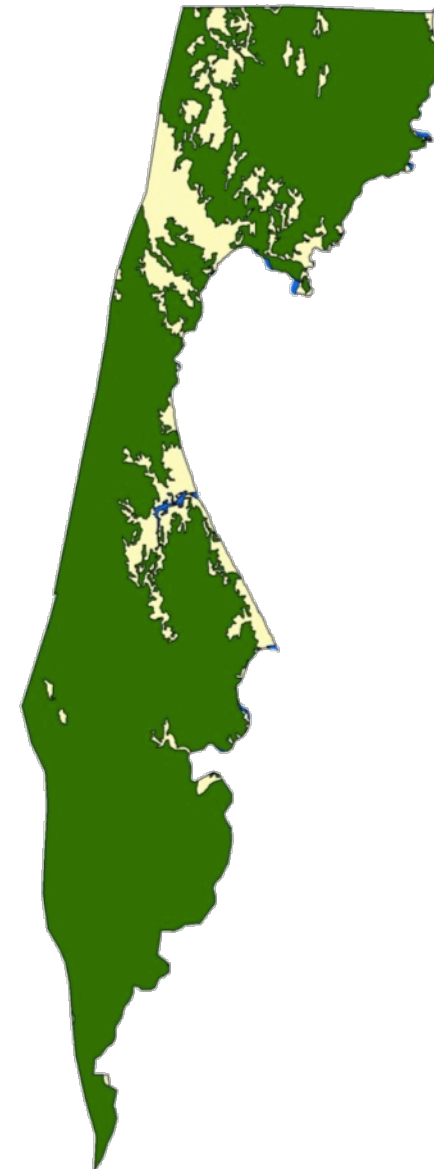


Dingalan, Aurora

Legend



Land Cover	Area in Hectares
Forest	32,062.16
Non Forest	5,119.17
Water	130.19
Total	37,311.52



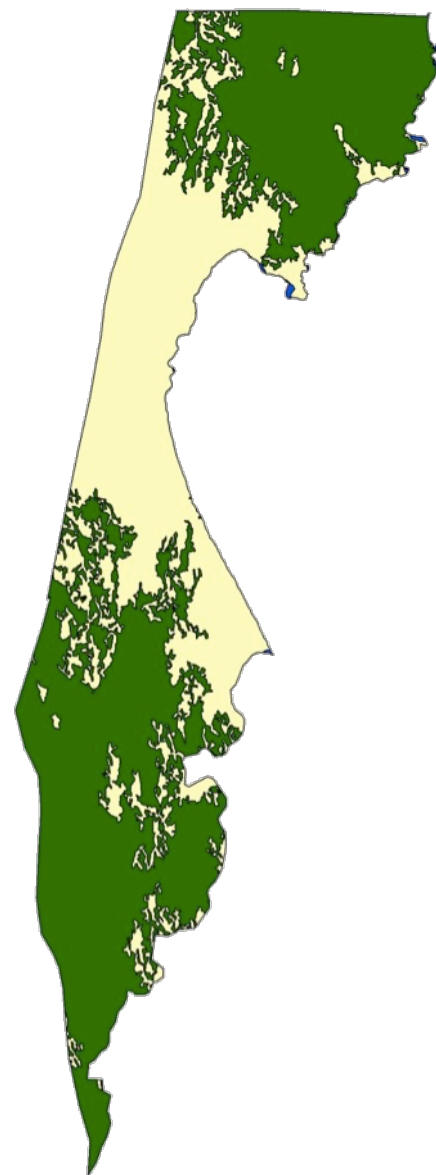
2010

Dingalan, Aurora

Legend



Land Cover	Area in Hectares
Forest	22,414.79
Non Forest	14,838.04
Water	58.69
Total	37,311.52



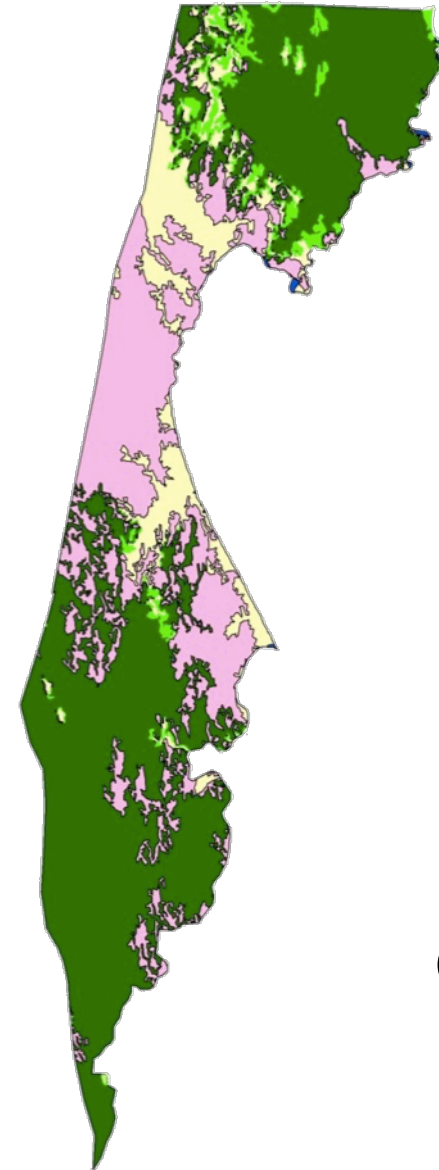
2015

Dingalan, Aurora

Legend

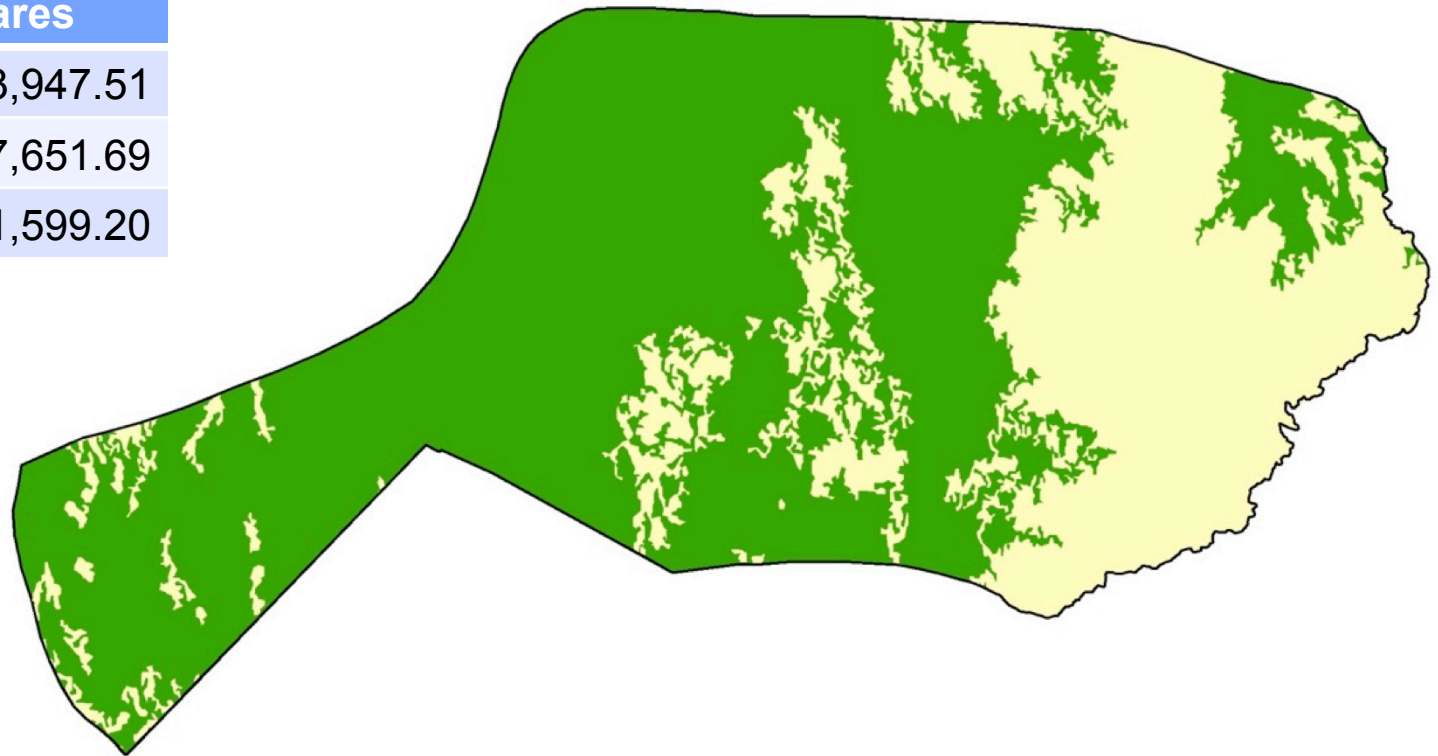


Land Cover	Area in Hectares
Forest Loss	10,492.04
Forest Gain	844.67

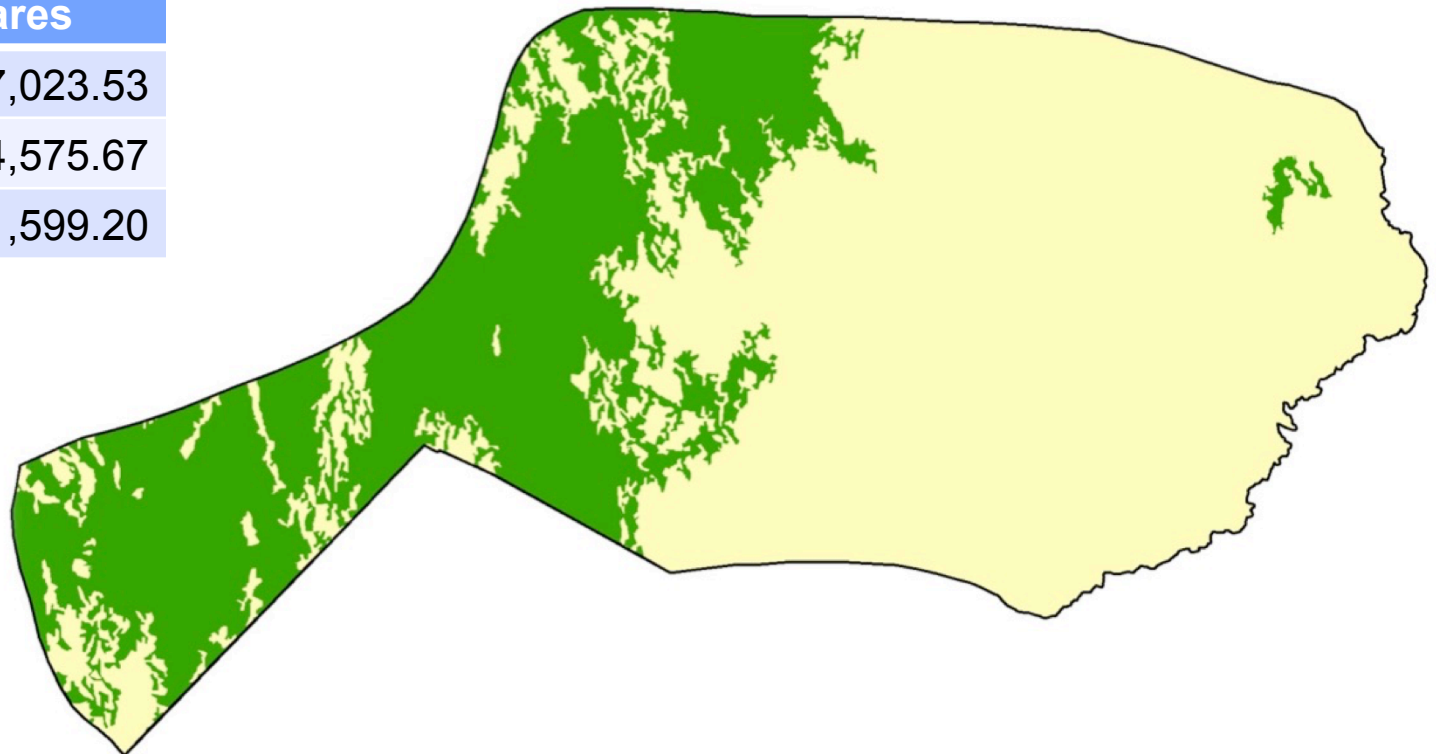


Change

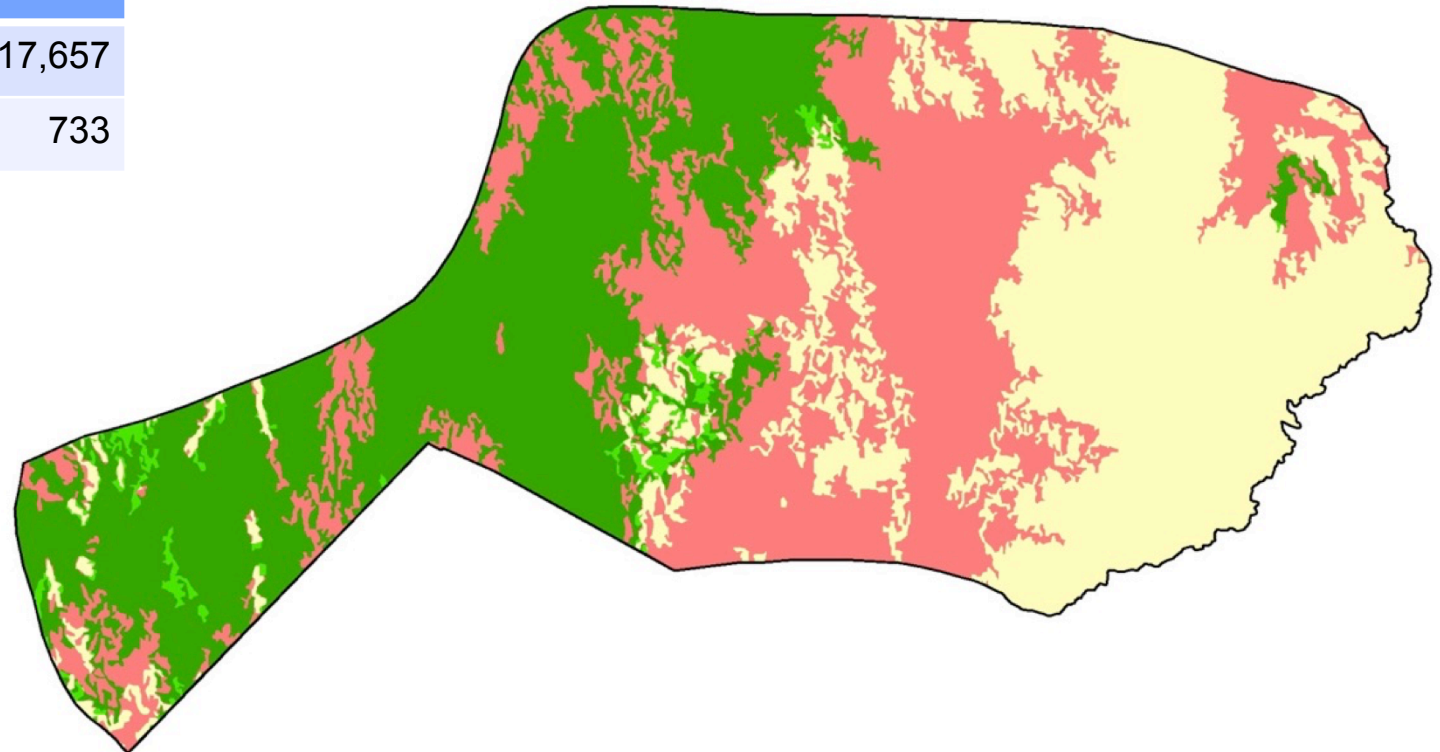
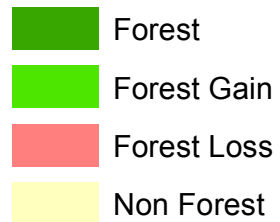
Land Cover	Area in Hectares
Forest	33,947.51
Non Forest	17,651.69
Total	51,599.20

Legend**Tapaz, Capiz****2010**

Land Cover	Area in Hectares
Forest	17,023.53
Non Forest	34,575.67
Total	51,599.20

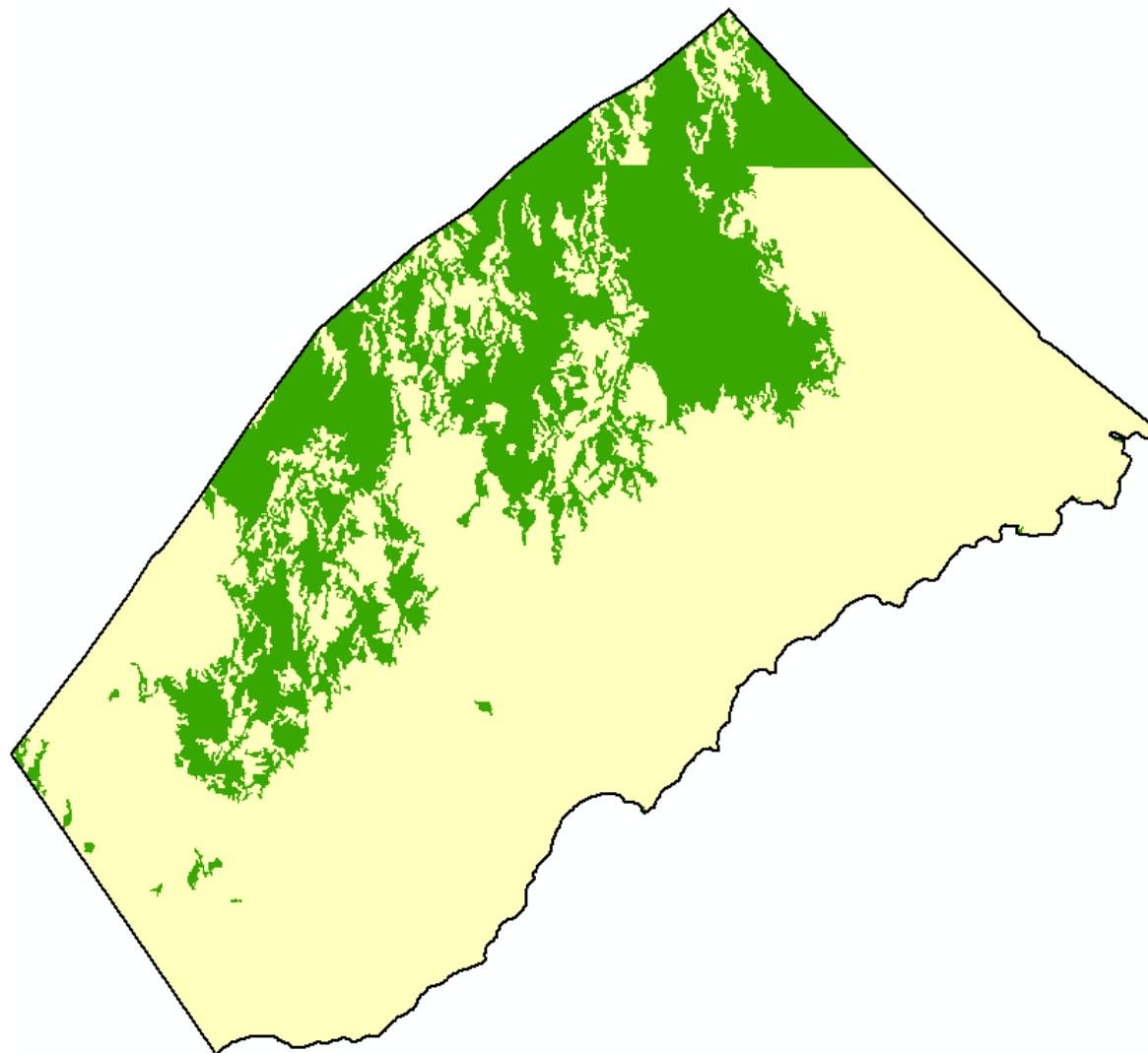
Legend**Tapaz, Capiz****2015**

Land Cover	Area in Hectares
Forest Loss	17,657
Forest gain	733

Legend**Tapaz, Capiz**

Change

Brooke's Point, Palawan

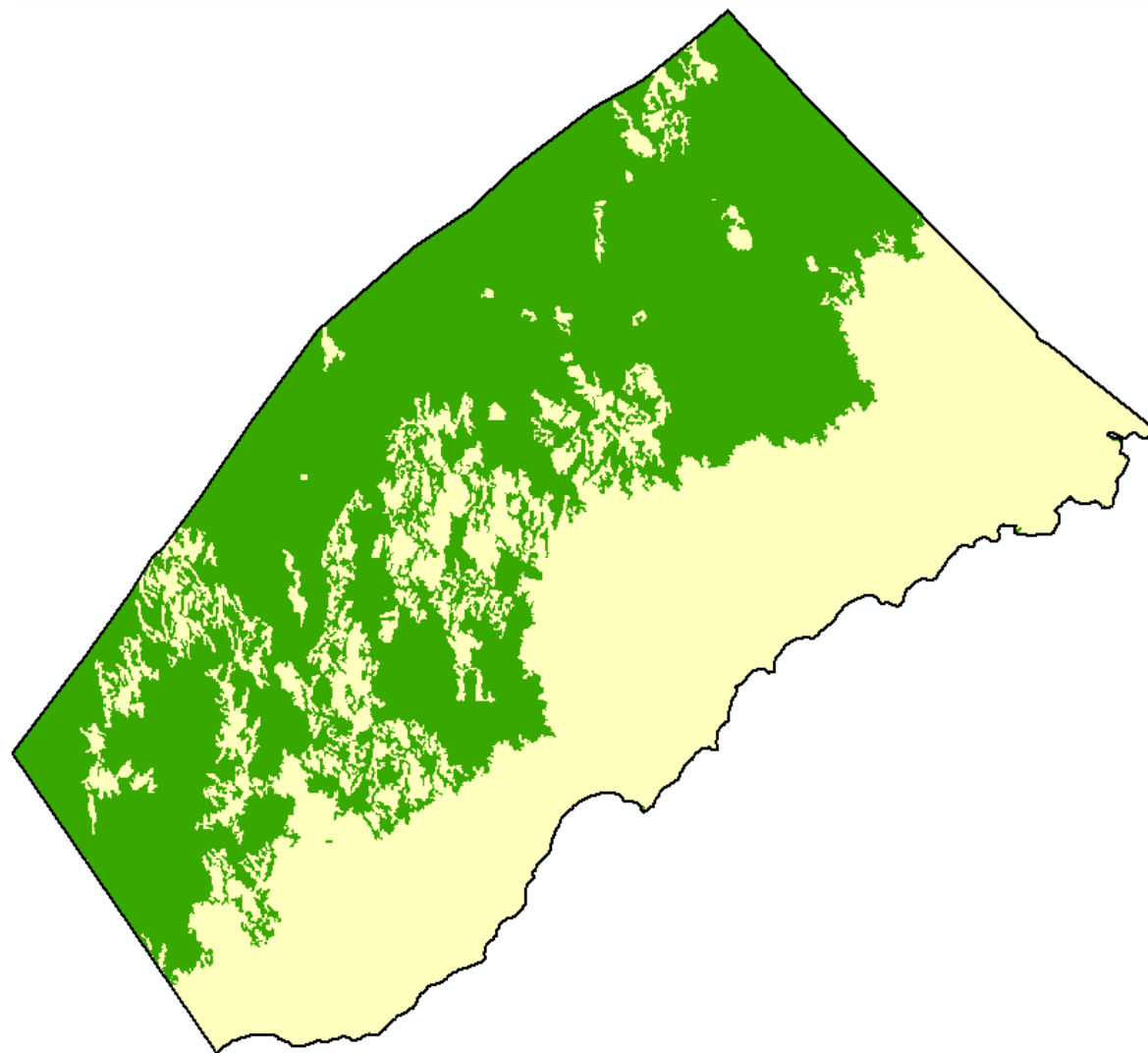


2010

- Forest
- Non forest
- Water

Land Cover	Area in Hectares
Forest	23,771
Non Forest	65,574
Total	89,345

Brooke's Point, Palawan

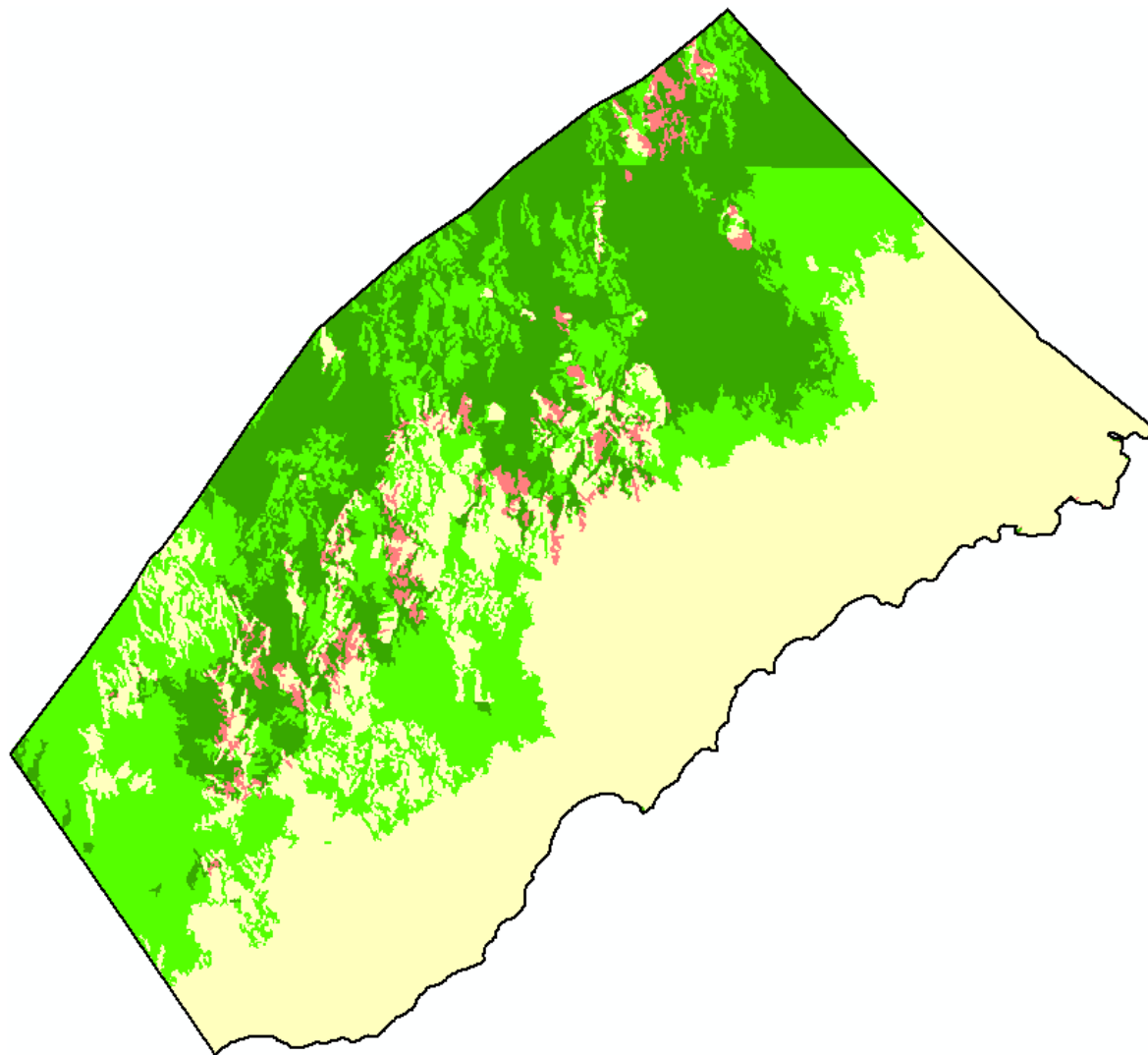


2015

- Forest
- Non forest
- Water

Land Cover	Area in Hectares
Forest	46,166
Non Forest	43,179
Total	89,345

Brooke's Point, Palawan



Change

- Forest
- Forest gain
- Forest loss
- Non forest

Land Cover	Area in Hectares
Forest gain	24,229
Forest loss	1,833

Insights and Next Steps

- Validation must be performed for the areas.
- Comparison with local data and other global datasets (NAMRIA and Hansen Data)
- Possible integration with Collect Earth (Open Foris)

Acknowledgements

- Japan Aerospace Exploration Agency (JAXA)
- Deutsche Gesellschaft für Internationale Zusammenarbeit (GIZ)