

## **K&C Phase 4 – Status report**

### **Forest monitoring in Colombia**

*Carlos Pedraza*

*The Nature Conservancy*

*Ederson Cabrera and Gustavo Galindo*

*IDEAM*

*And communities of Caquetá, Colombia*

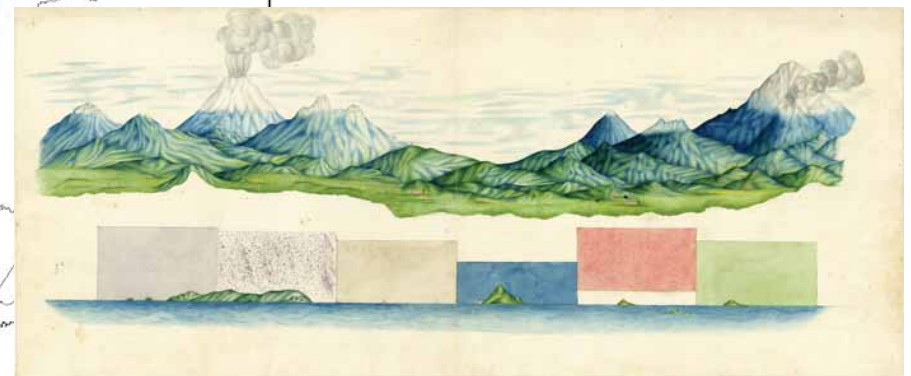
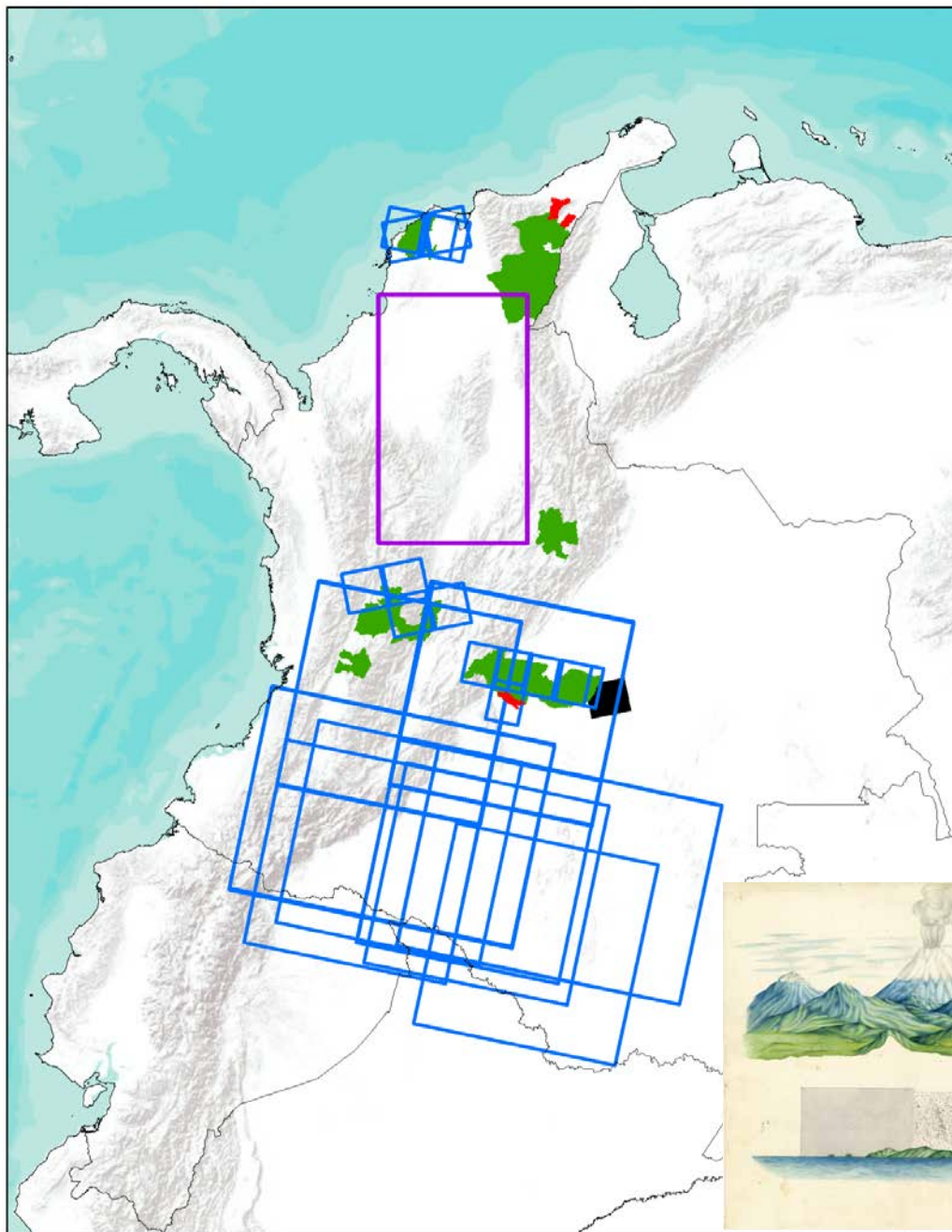
## Project outline and objectives

Demonstrate the application of ALOS Data to provide relevant products about terrestrial and freshwater ecosystems dynamics and provide authorities and institutions with accurately products for natural resources management

- ⇒ Articulating **K&C research** (methods and products) with the **National Forest and Carbon Monitoring System and communities**
- ⇒ Integrating wetlands dynamics, **structural and spatiotemporal variation**, in the **integral management** at a basin scale

# ALOS

K&C Initiative  
International science collaboration led by JAXA





# ALOS

K&C Initiative  
An international science collaboration led by JAXA



"People everywhere may well be confused by the news coming out of Colombia"

The New Yorker October 2016

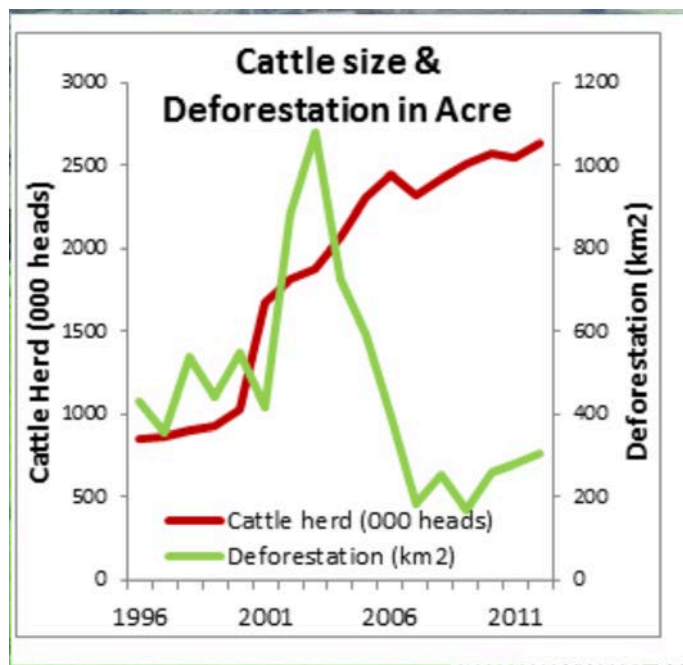




Deforested areas are on red and yellow areas are degradation areas Scan SAR (2015-2016)



## Sustainable Cattle Ranching Project



Seplan 2013, Acre



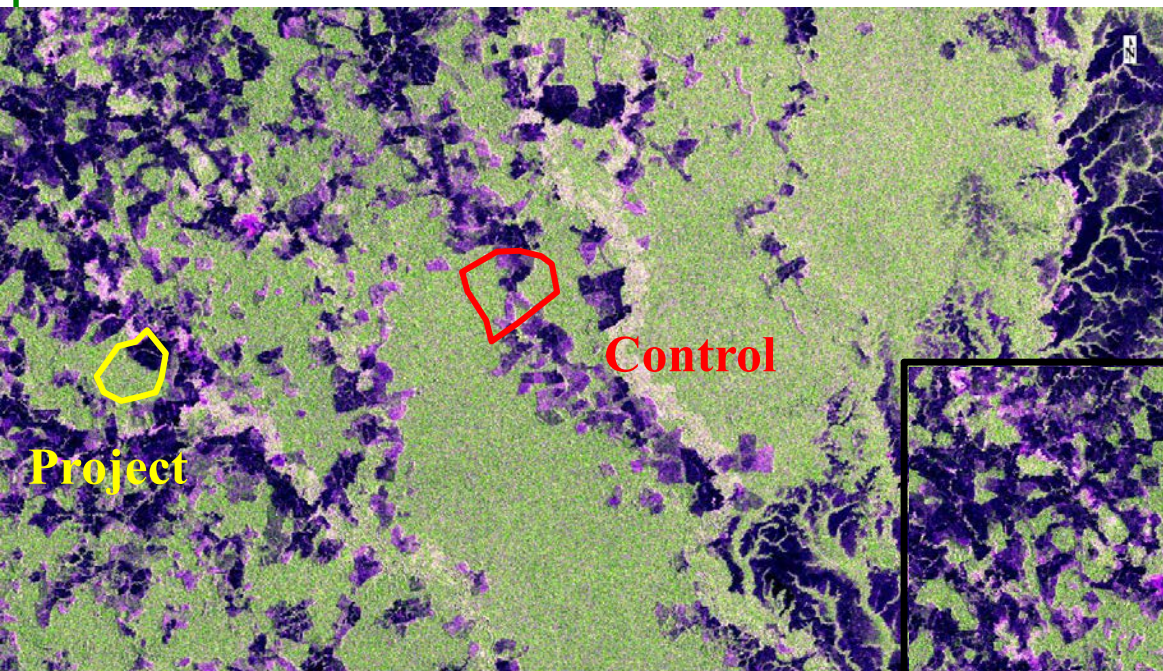


# ALOS

K&C Initiative  
An international science collaboration led by JAXA







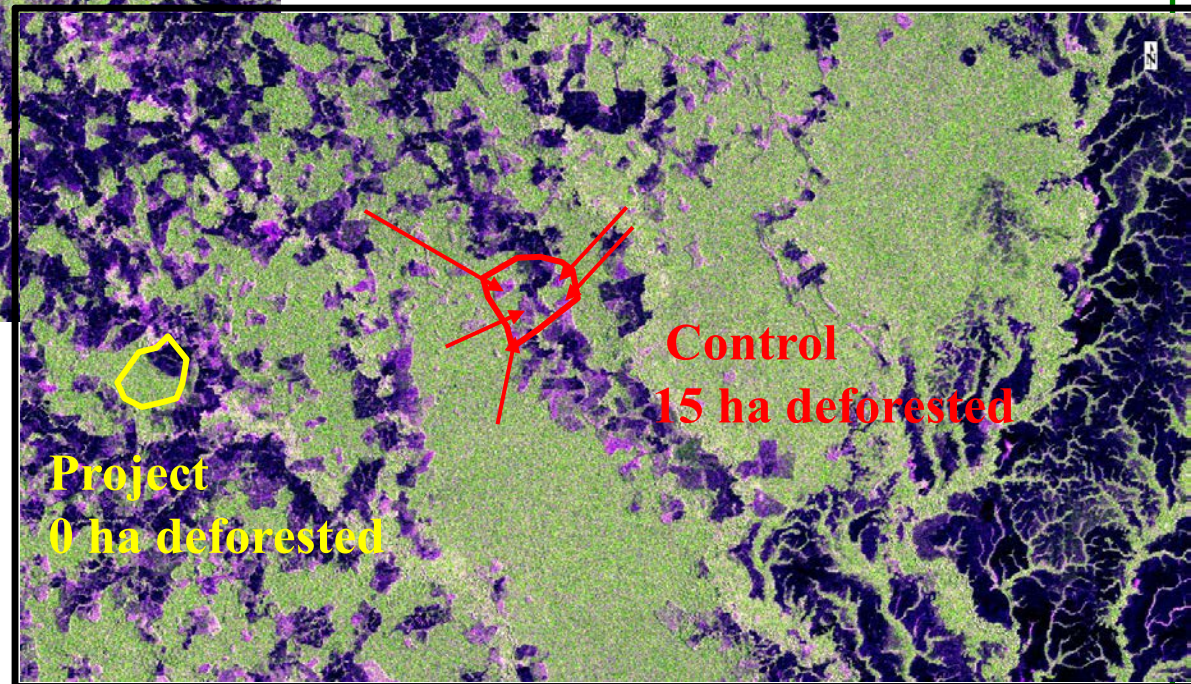
ICF and Ecometrica (UK)  
KPI-8 Avoided Deforestation  
by 2700 farms

## 2010 FBD

25-30 January KPI -8 Indicator  
Workshop

ALOS-1 and ALOS-2, and  
ground truth data

TNC, IDEAM and Ecometrica



## 2016 FBD

HH, HV ; HH-HV



# ALOS

K&C Initiative  
*An international science collaboration led by JAXA*



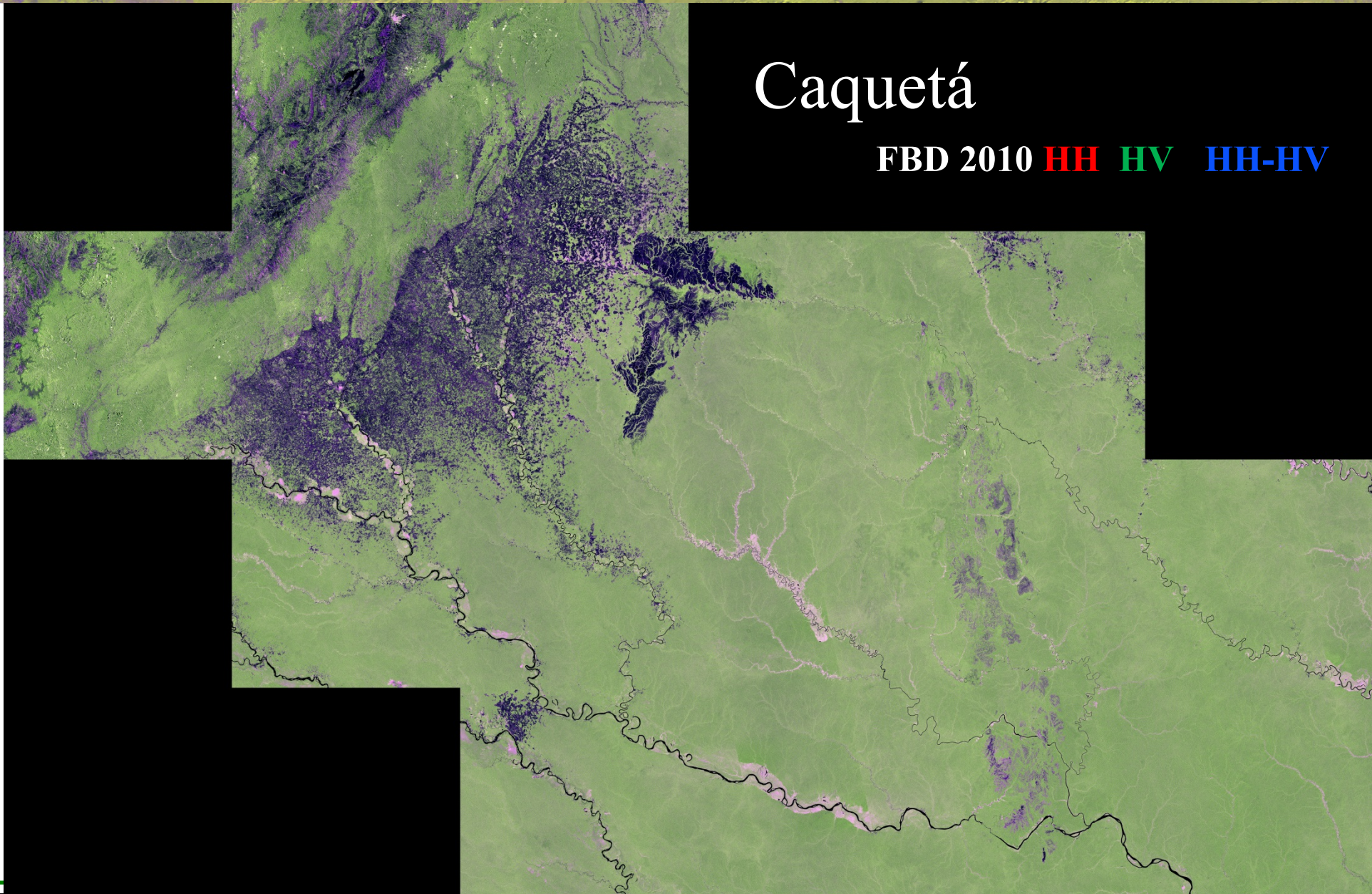


ALOS

K&C Initiative  
An international science collaboration led by JAXA

Caquetá

FBD 2010 **HH** **HV** **HH-HV**





# ALOS

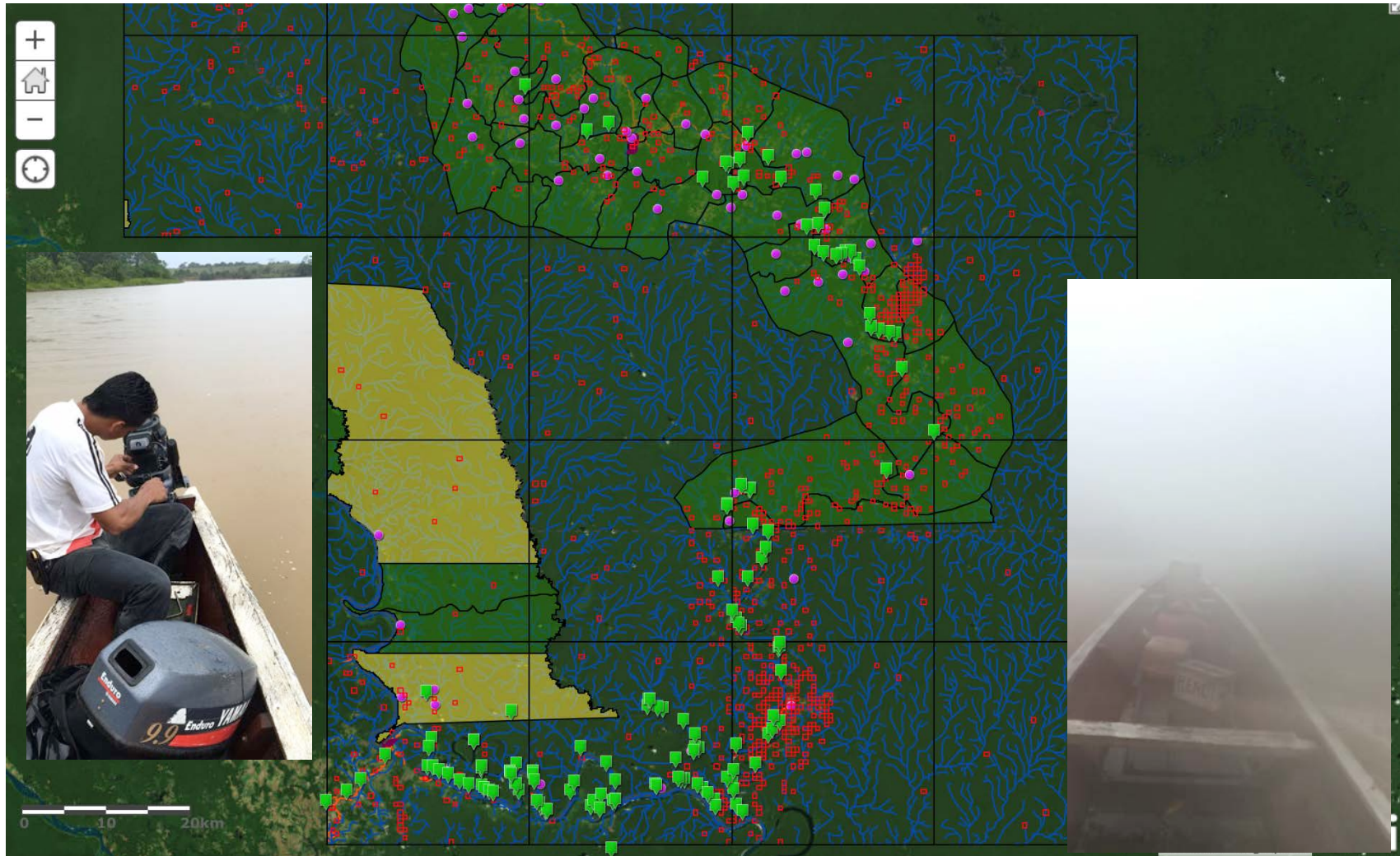
K&C Initiative  
An international science collaboration led by JAXA





# ALOS

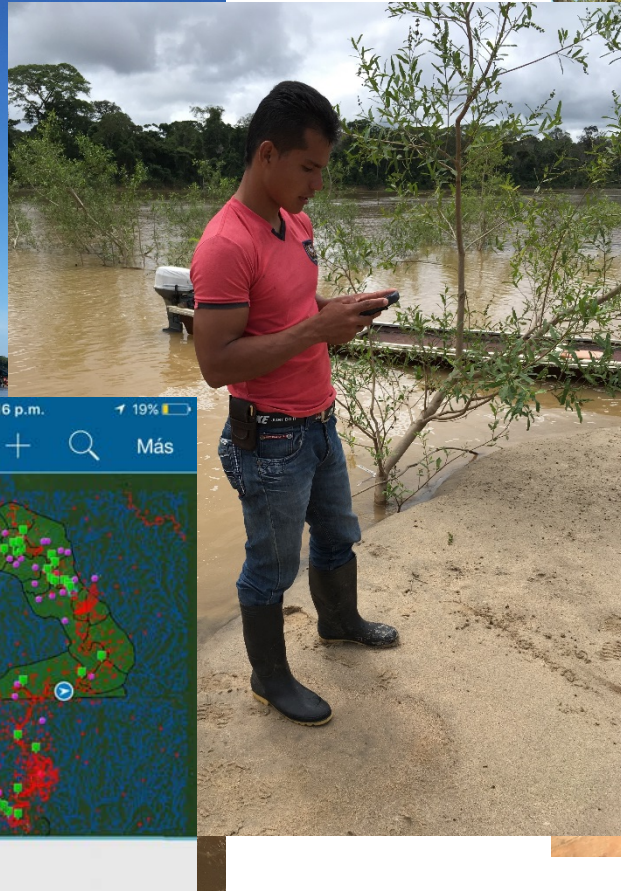
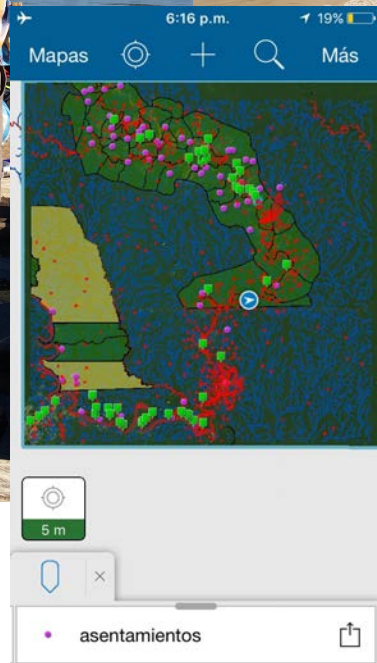
K&C Initiative  
An international science collaboration led by JAXA





# ALOS

K&C Initiative  
An international science collaboration led by JAXA



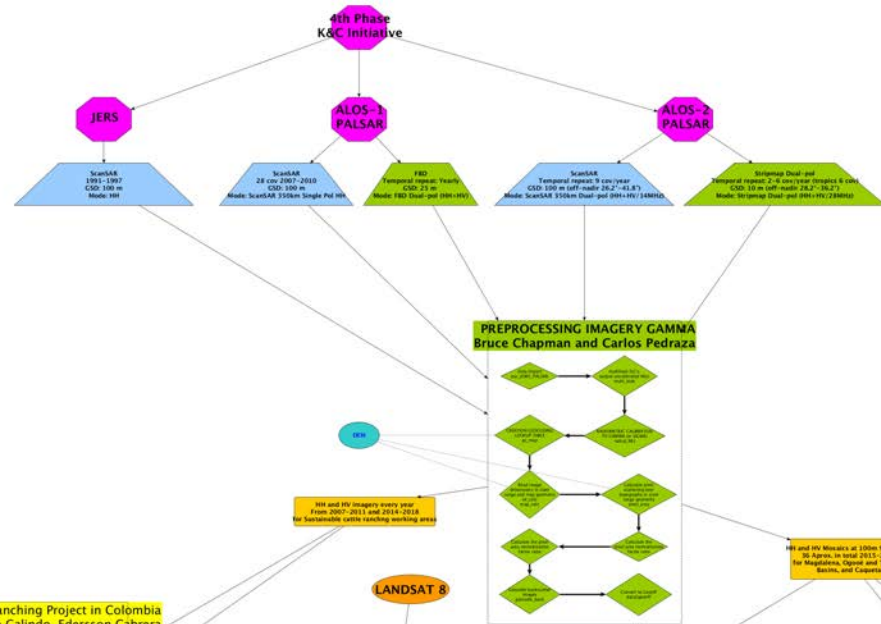


# ALOS

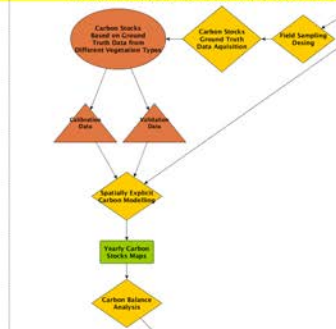
K&C Initiative  
*An international science collaboration led by JAXA*



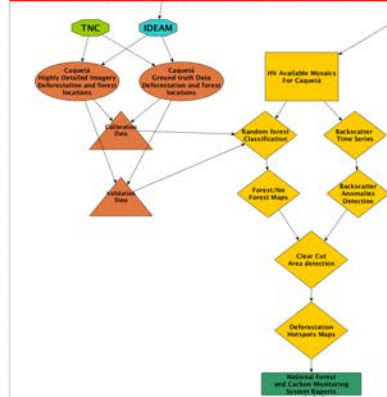




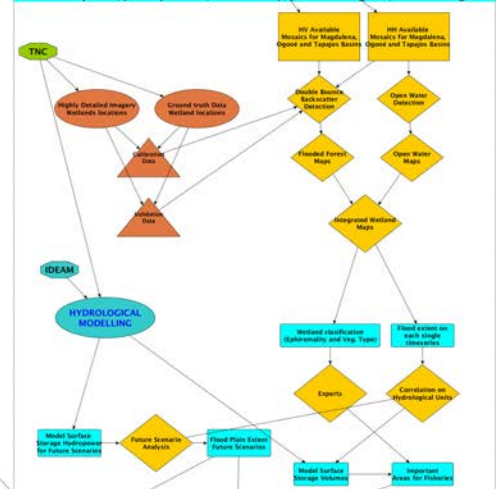
Carbon Balance for Sustainable Cattle Ranching Project in Colombia  
Carlos Pedraza, Gustavo Galindo, Edersson Cabrera



EARLY WARNING SYSTEM (DEFORESTATION)  
Gustavo Galindo, Edersson Cabrera and Carlos Pedraza



FLOOD PLAIN DYNAMICS  
Bruce Chapman, Jeffrey Evans, Paulo Petry, Juliana Delgado, Hector Angarita



Food Security

Water for People

GRP Smart Infrastructure



## Project milestones

- Estimate the KPI Avoided deforestation for 2700 Farms associated to the Sustainable Cattle Ranching Project (first semester 2017)
- Develop a forest monitoring platform where remote sensing data and local data will be articulated to the national forest system and reports for multiple users (2017)
- Field work of Drivers of deforestation 1063 sites to gather social economic and forest dynamics information Caquetá (First semester 2017)
- 2017 and 2018 integrate field work protocols to multiple institutions and agencies



## **Deliverables etc.**

Describe the planned output of your project.

- Deforestation analysis at multiple scales (farm level and Caqueta)
- Forest dynamics ground truth data for aprox. 2700 farms and a for Caquetá.
- Biomass estimation for forest and post deforested Land Uses at two regions in Colombia (2018)
- Wetlands dynamics mapping for the Magdalena Basin (2018)



# ALOS

K&C Initiative  
An international science collaboration led by JAXA

