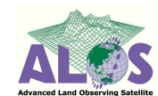


# Using ALOS images to support the protection of the Brazilian Amazonia and combat illegal deforestation

**CSR/IBAMA**

Tokyo

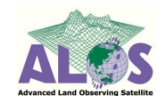
January 2011



## INDICAR

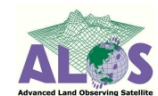
### Indicator of deforestation by radar images

- Project developed by CSR/IBAMA
- Uses radar images of ALOS PALSAR
- Detection of deforestation under cloud cover
- Complement to DETER system

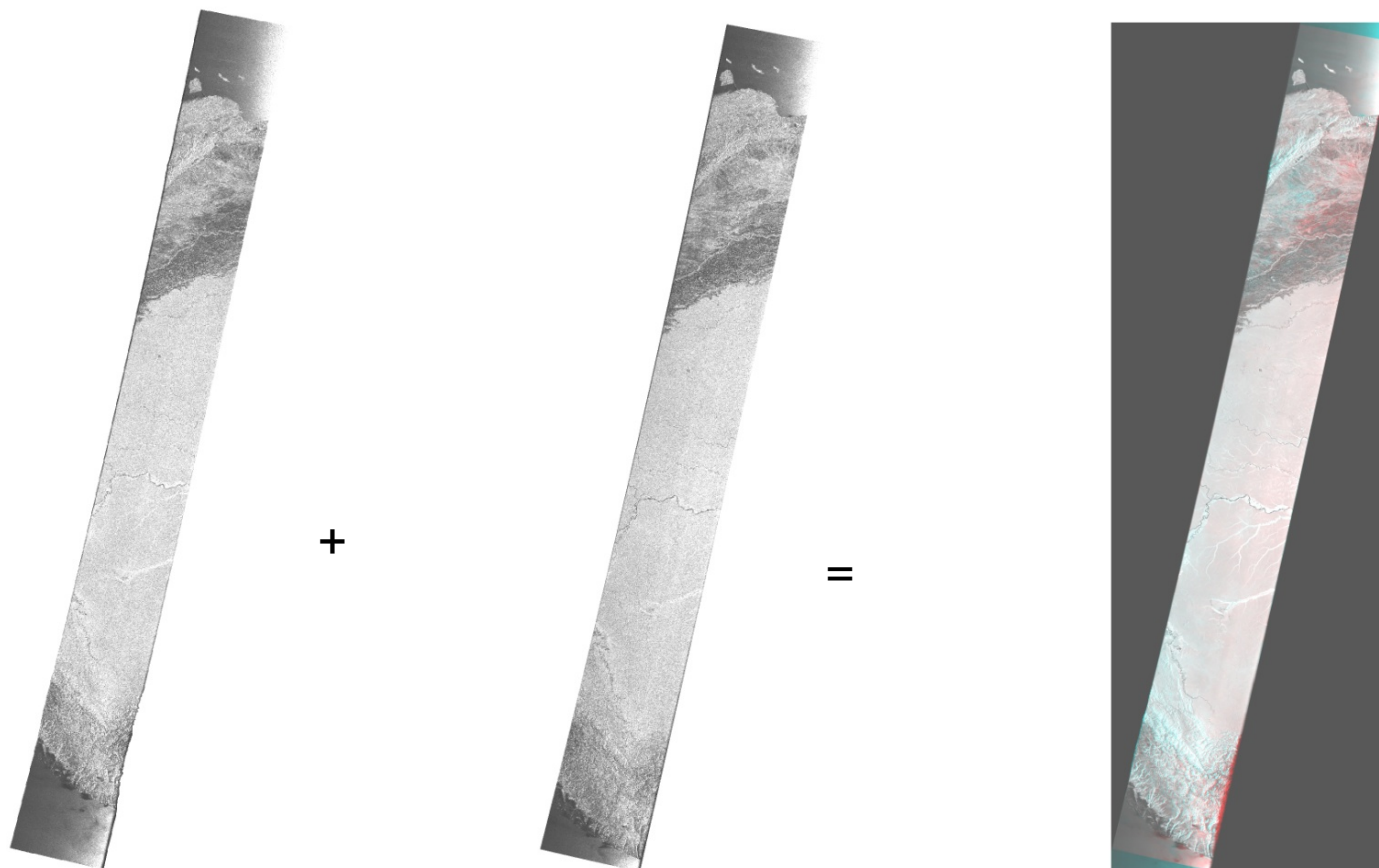


## Methodology

- Uses ScanSAR images with 100-m resolution
- Multitemporal compositions
- Mask previous PRODES & DETER polygons
- Polygons delineation and validation with optical images (and few field campaigns)



# Use of ALOS images to support the protection of the Brazilian Amazon forest



**Cycle 24**  
**Path 439**

**Cycle 26**  
**Path 439**

**Composition**

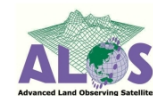
# Use of ALOS images to support the protection of the Brazilian Amazon forest

JAXA's pre-processed  
ScanSAR images

Mosaics of different  
cycles

Visual Interpretation  
(polygon extraction)

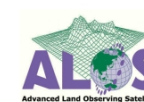
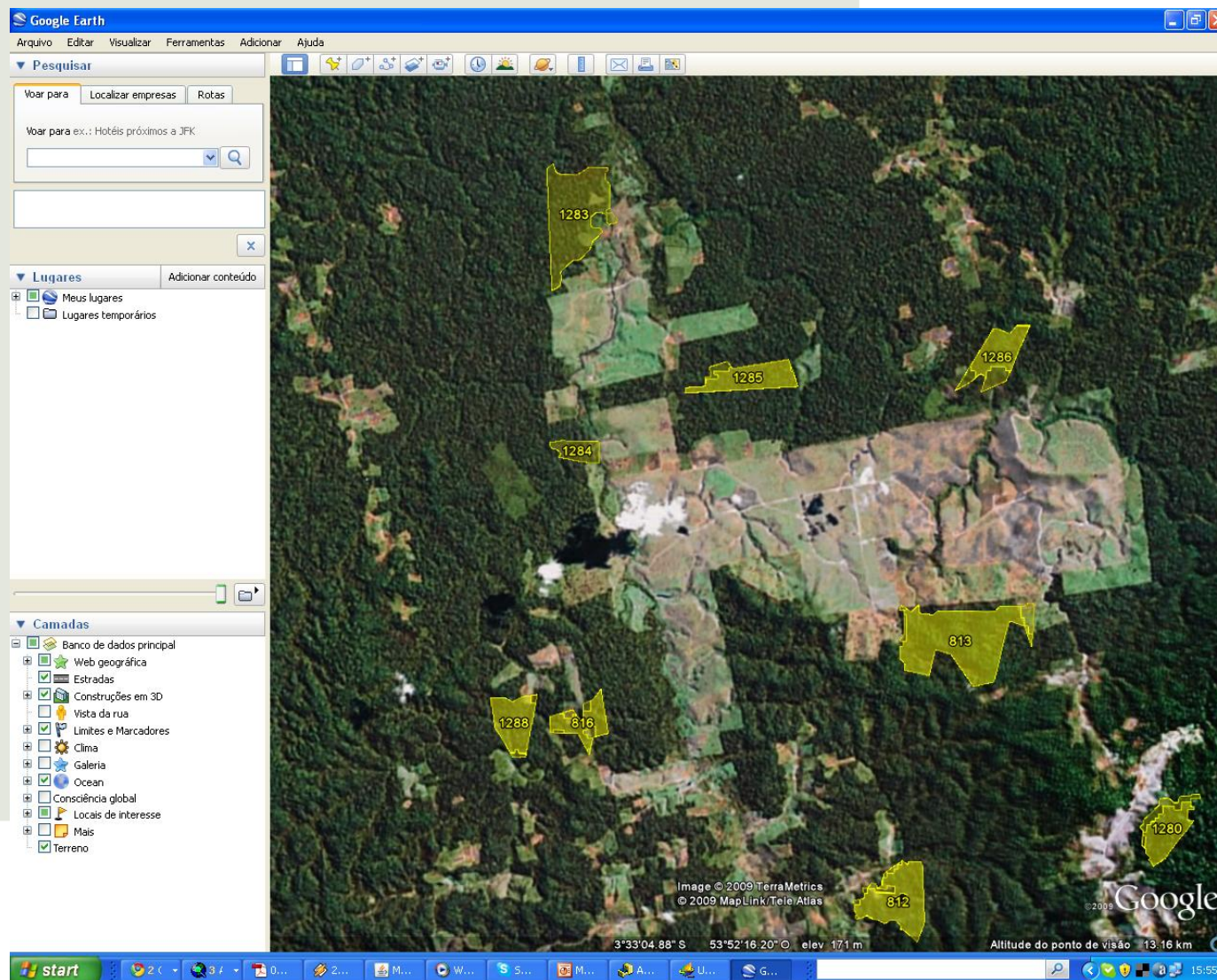
Products:  
Indicatives  
Kml  
Logistic maps  
GPs points





# Use of ALOS images to support the protection of the Brazilian Amazon forest

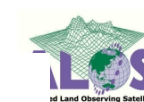
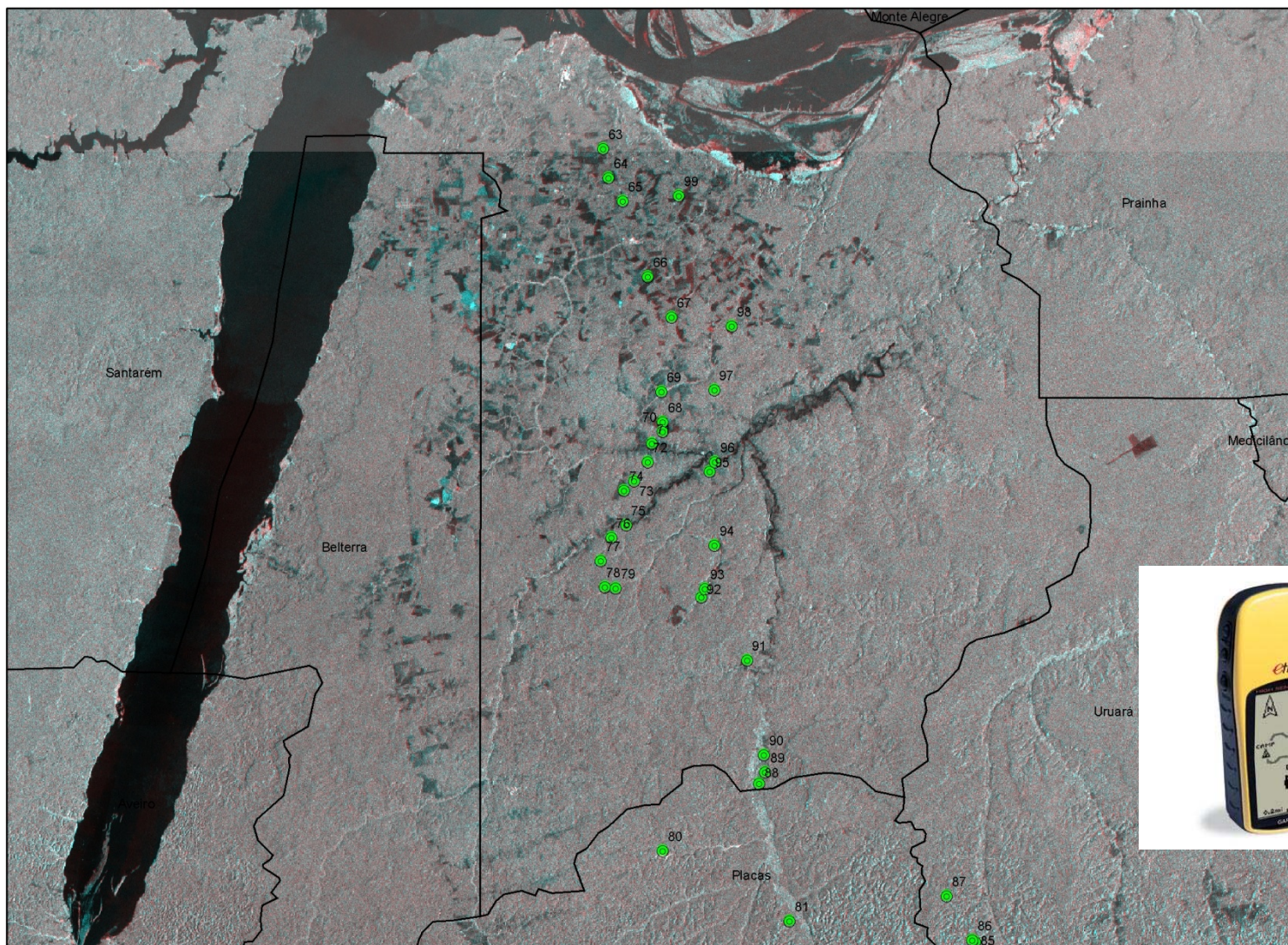
## kml





# Use of ALOS images to support the protection of the Brazilian Amazon forest

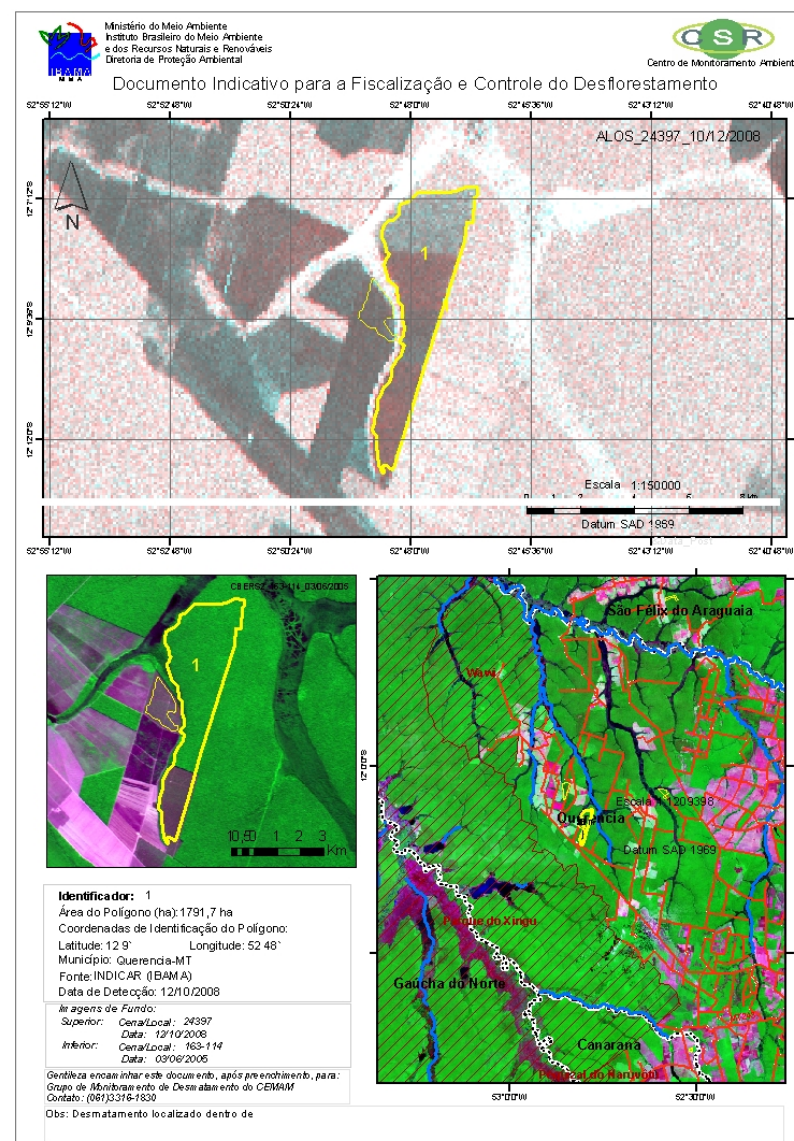
## GPS Points





# Use of ALOS images to support the protection of the Brazilian Amazon forest

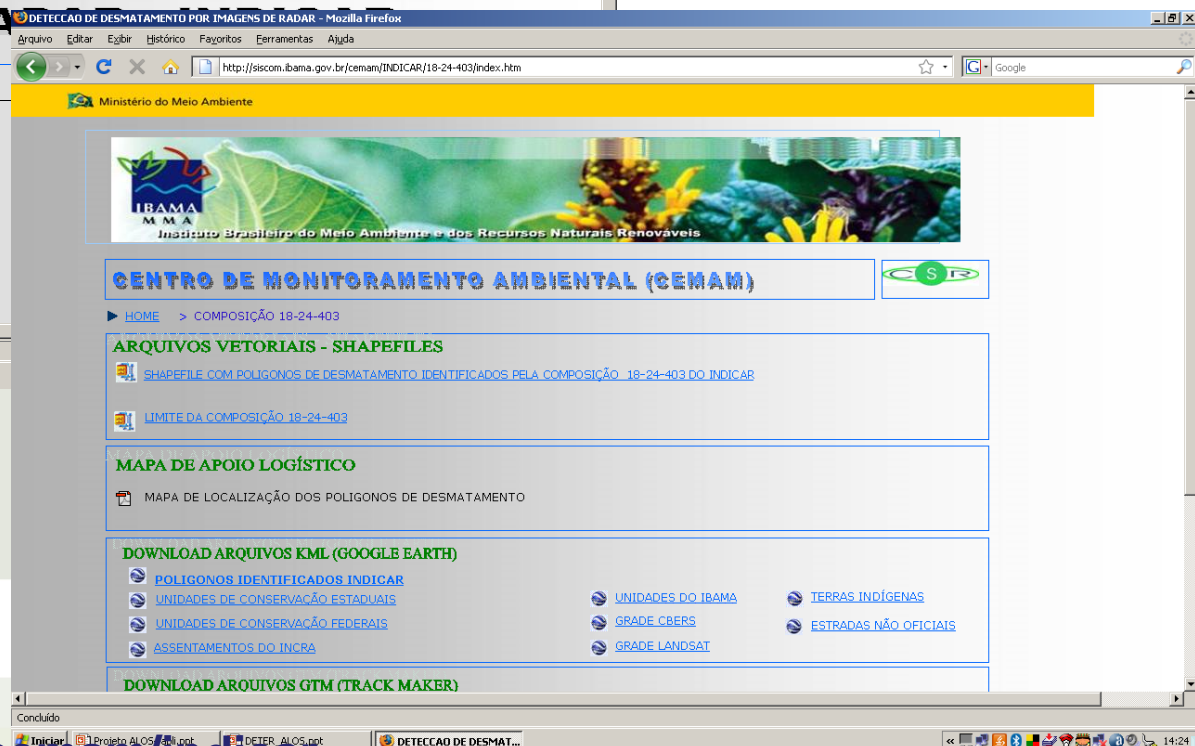
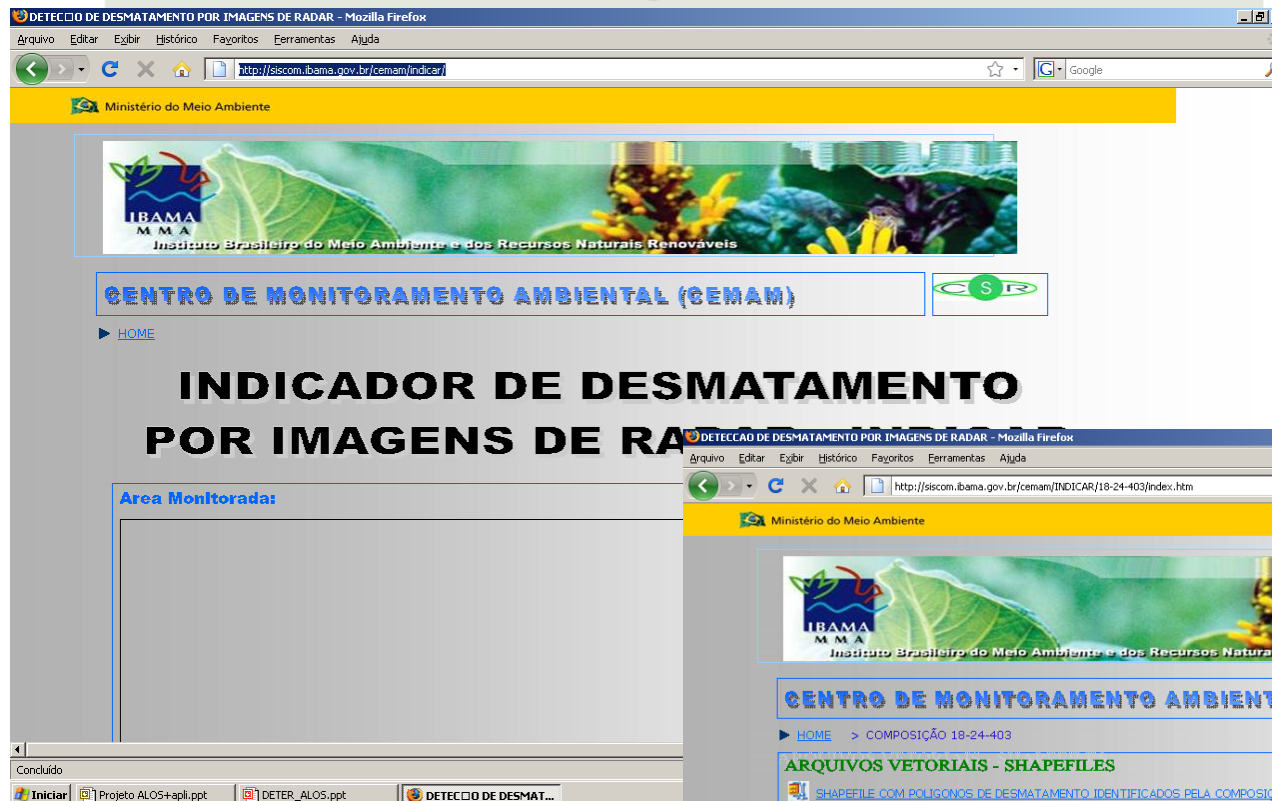
## Indicative document of deforestation by INDICAR





Use of ALOS images to support the protection of the Brazilian Amazon forest

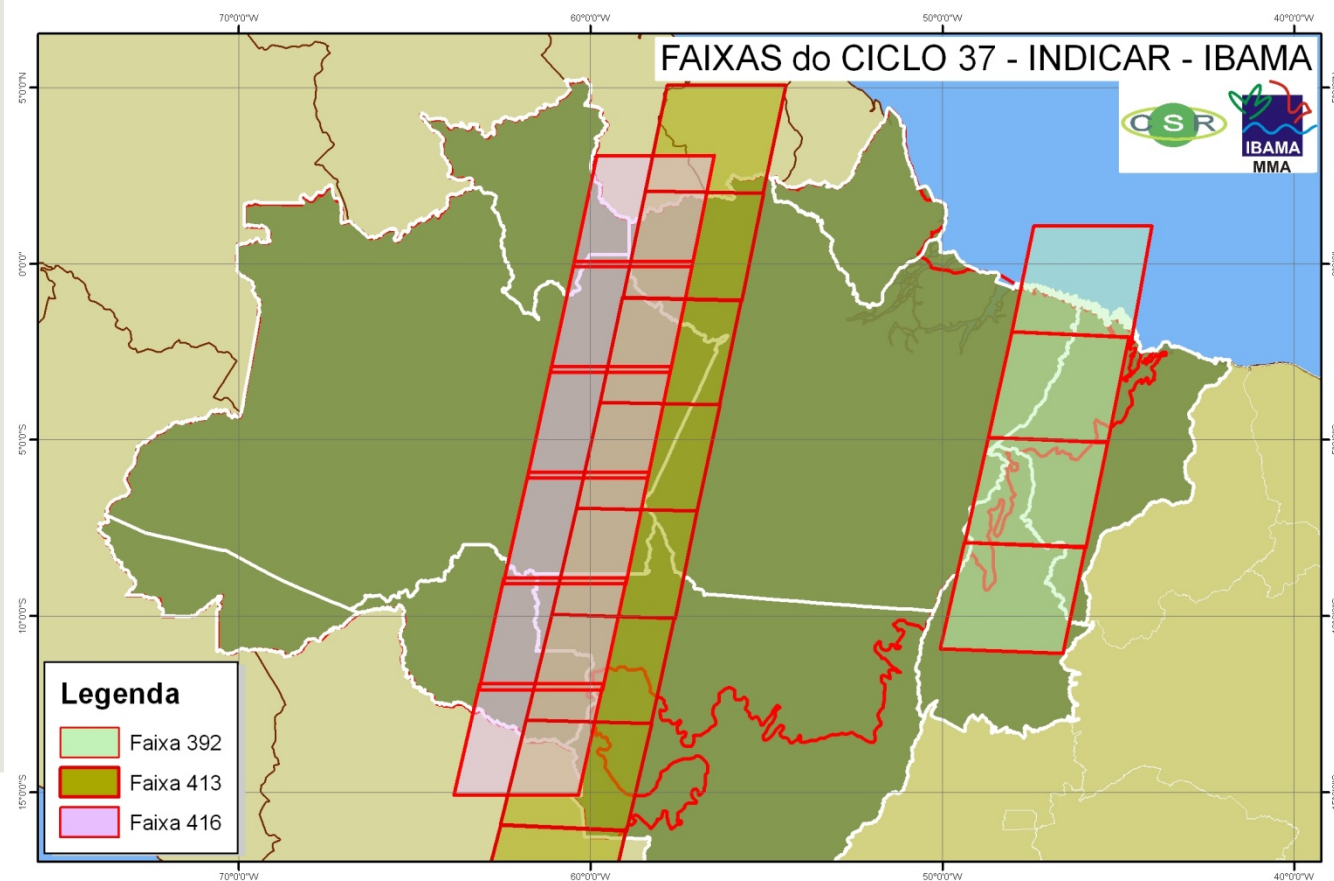
# INDICAR Web Page



<http://siscom.ibama.gov.br/cenam/Indicar>

Use of ALOS images to support the protection of the Brazilian Amazon forest

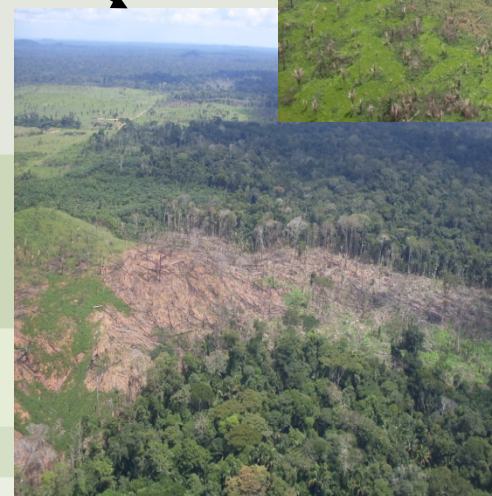
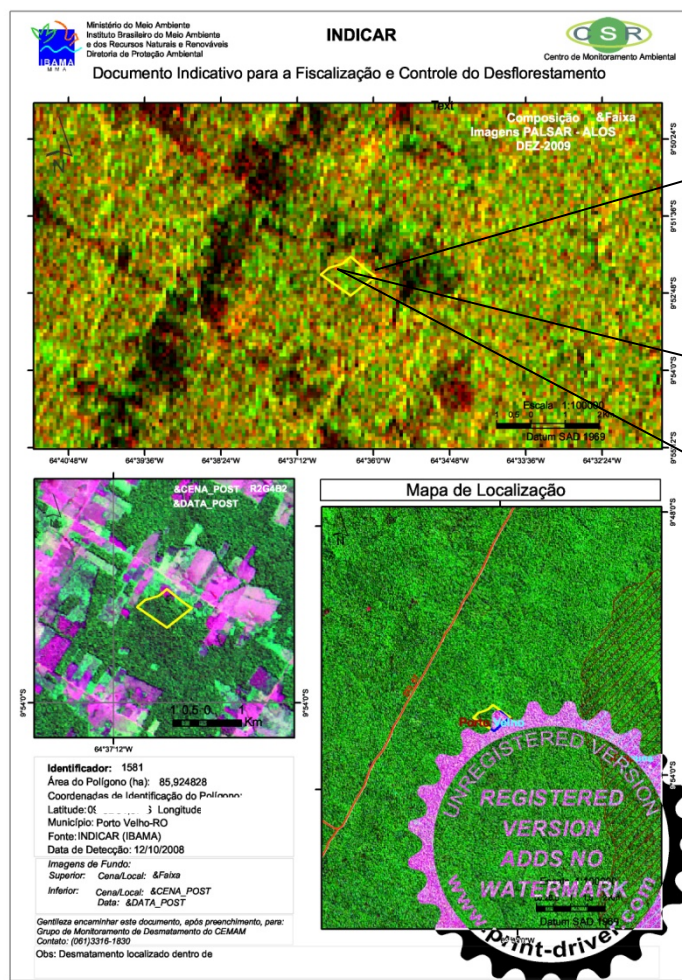
# Results of INDICAR July 2010 (cycles 35-37)





# Use of ALOS images to support the protection of the Brazilian Amazon forest

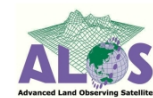
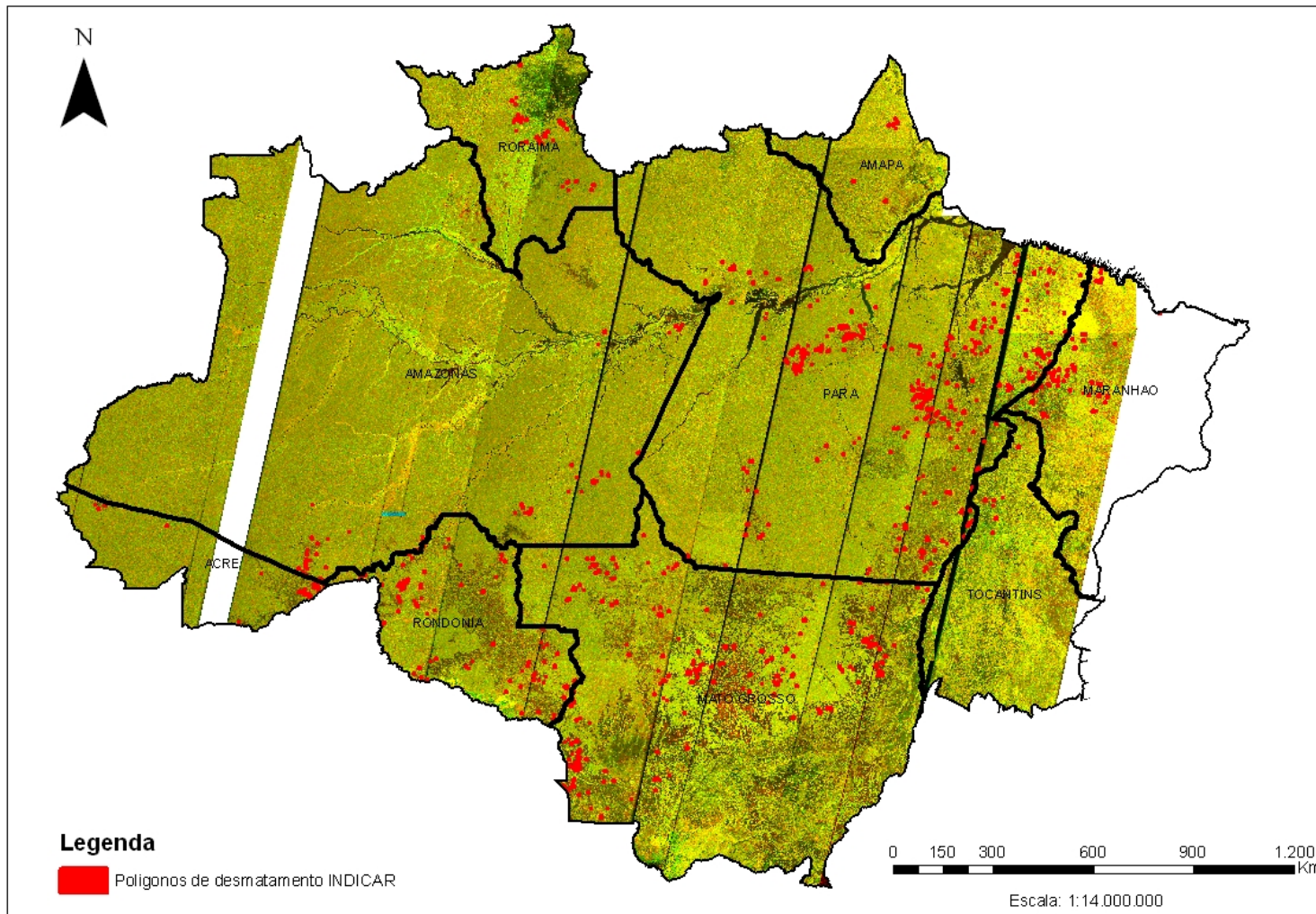
## INDICAR field results





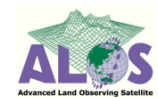
Use of ALOS images to support the protection of the Brazilian Amazon forest

# Updated INDICAR results



# Use of ALOS images to support the protection of the Brazilian Amazon forest

- ✓ Now, with INDICAR system, Brazilian Amazon region can be monitored in all seasons of the year
- ✓ More than 2,000 polygons already detected by INDICAR





# Forest deforestation prevention airplane and the pilot!!

