

Forest monitoring and change assessment in Tasmania using ALOS PALSAR and JERS-1 data

Project objectives

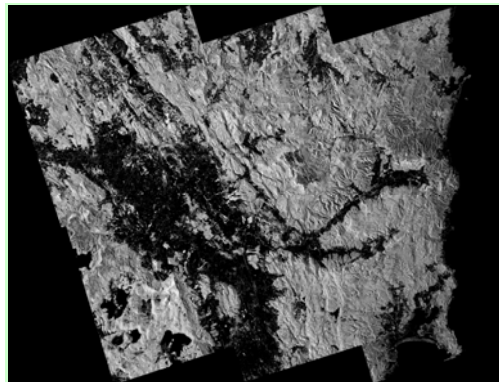
- Establish standardised methods for the processing and generation of forest information products for use in carbon assessment.
- Demonstrate interoperability of optical and SAR data for forest monitoring and change assessment.

Results

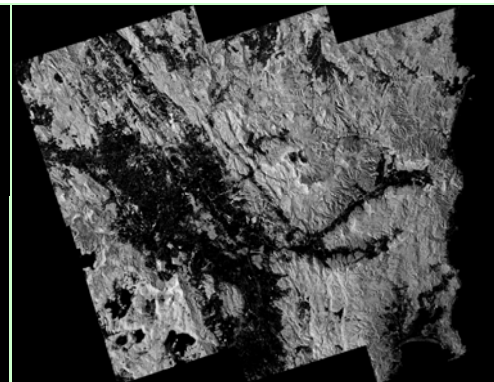
- Initial processing of ALOS PALSAR and JERS-1 data using Sarmap SARscape software.
- Illustrated documentation of processing strategies.

GEO FCT Science Team members

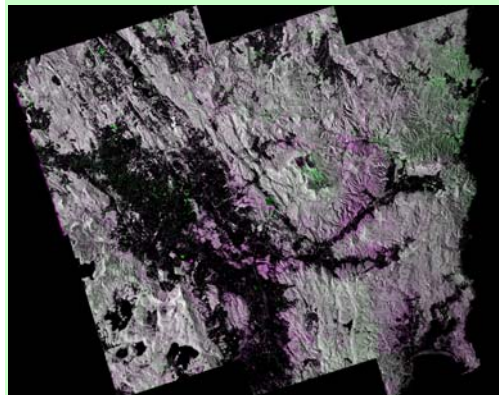
Tony Milne, Ian Tapley, Anthea Mitchell, Kim Lowell (CRC-SI)
Alex Held, Peter Caccetta,
Eric Lehmann, Zheng-Shu Zhou (CSIRO)



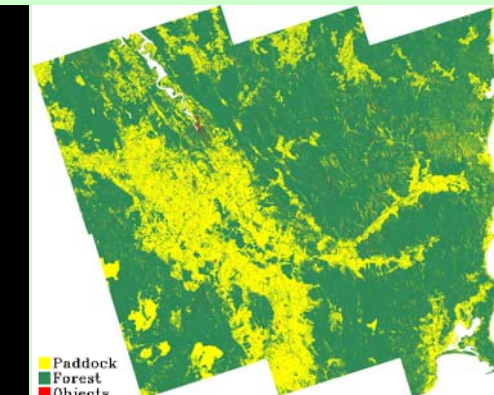
Subset 2007 PALSAR (HH) mosaic (with topography)



Subset 2008 PALSAR (HH) mosaic (with topography)

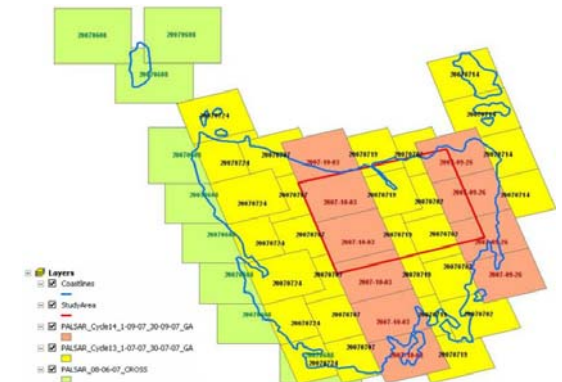


2007HH:2008HH:2007HH in R,G,B



Sample PALSAR derived forest/non-forest map for 2007

ALOS PALSAR data used
141 FBD PALSAR scenes providing full coverage of Tasmania for 3 dates (2007, 2008 and 2009)



RESTEC/GA archive ALOS PALSAR data (FBD, 6 July 2007 - 3 Oct 2007)

Other data sources

- 35 JERS-1 scenes (21 - 27 March 1994)
- Prototype JERS-1 mosaic

