

# **K&C Science Team : Extension Phase Proposal, Wetland Theme**

Lisa-Maria Rebelo

International Water Management Institute  
Addis Ababa, Ethiopia



## Extension Phase Proposal: Wetland Theme

Mapping and characterisation of wetland sites relevant to the Ramsar global wetlands inventory in prototype areas

- Project objectives: Mapping of the Sudd wetland
- Project area: The Upper Nile
- Time schedule: Underway, first products completed by Dec 2009
- Deliverables: Maps describing:
  - Wetland vegetation
  - Minimum water extent
  - Maximum water extent
  - Seasonally inundated land
- Data requirements
  - PALSAR mode FBS/FBD scenes through AUIG
  - PALSAR mode ScanSAR
  - Acquisition strategy requirements: High temporal frequency (46 days)
  - Processing requirements: Orthorectified

## Extension Phase Proposal: Wetland Theme

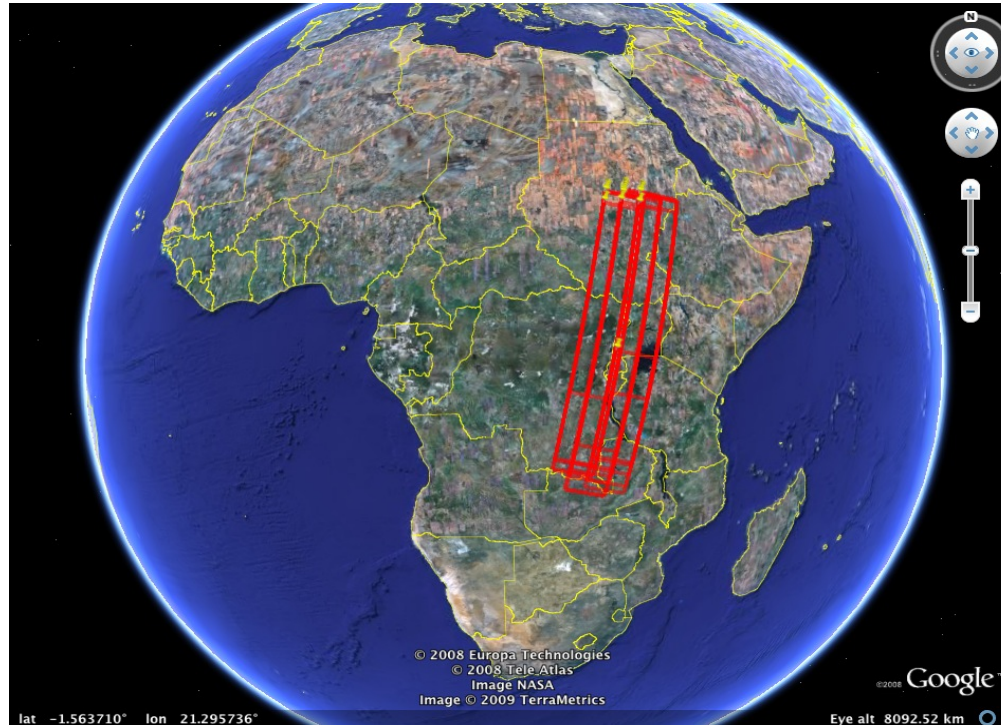
Mapping spatial patterns of inundation in prototype areas

- Project objectives: Identifying seasonal variations in inundation
- Project area: The Upper Nile, the Zambezi Delta, the Okavango Delta
- Time schedule: Underway, first products completed by Dec 2009
- Deliverables: Maps of seasonal patterns of inundation
- Data requirements:
  - PALSAR mode ScanSAR
  - Acquisition strategy requirements: High temporal frequency (46 days)
  - Processing requirements: Orthorectified



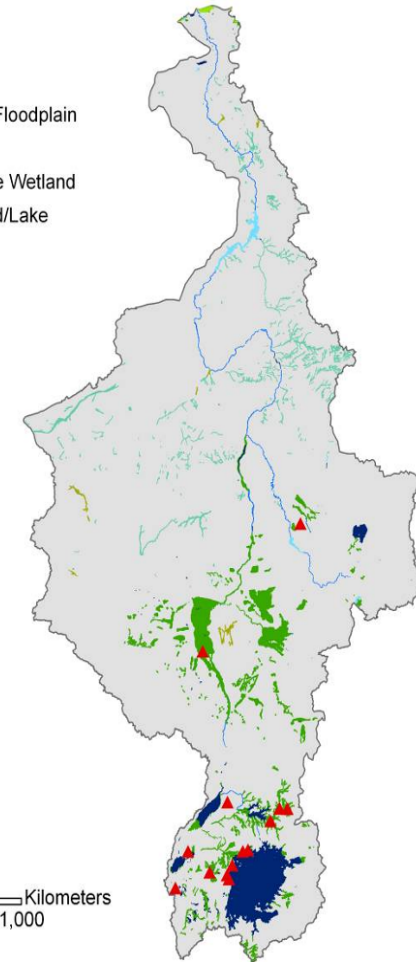
# ALOS

K&C Initiative  
An international science collaboration led by JAXA



Global Lakes and Wetlands Database (Lehner and Doll 2004)

- Lake
- Reservoir
- River
- Freshwater Marsh/Floodplain
- Coastal Wetland
- Pan/Brackish/Saline Wetland
- Intermittent Wetland/Lake
- Nile Basin
- ▲ Ramsar Sites



- Wetlands occur extensively across sub-Saharan African and the Nile Basin
- Vital in supporting local populations – sustainable management is critical
- Requires information at multiple spatial and temporal scales

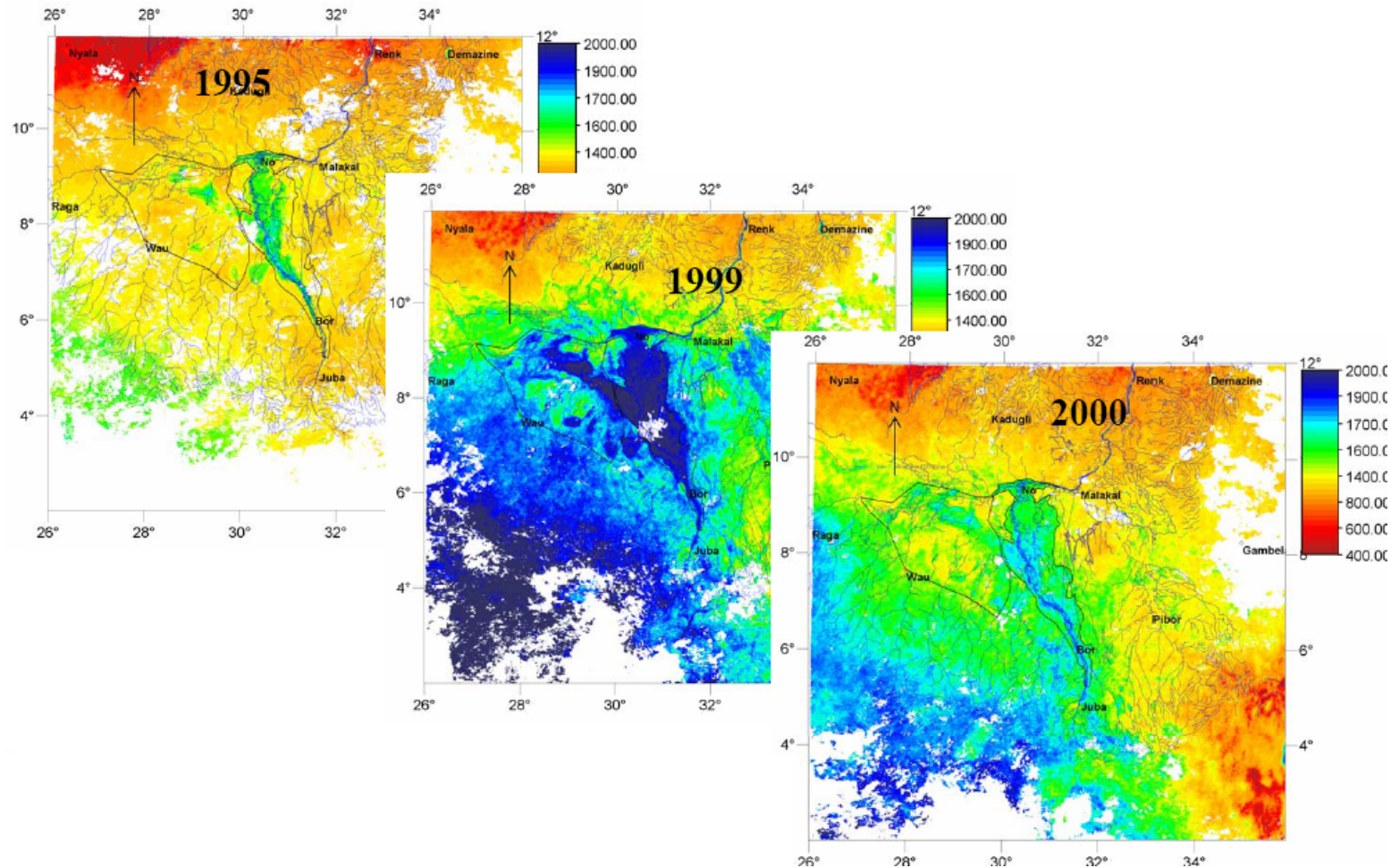
Lisa-Maria Rebelo  
International Water Management Institute  
Addis Ababa, Ethiopia





# ALOS

K&C Initiative  
An international science collaboration led by JAXA



Source: Y Mohammed, IWMI

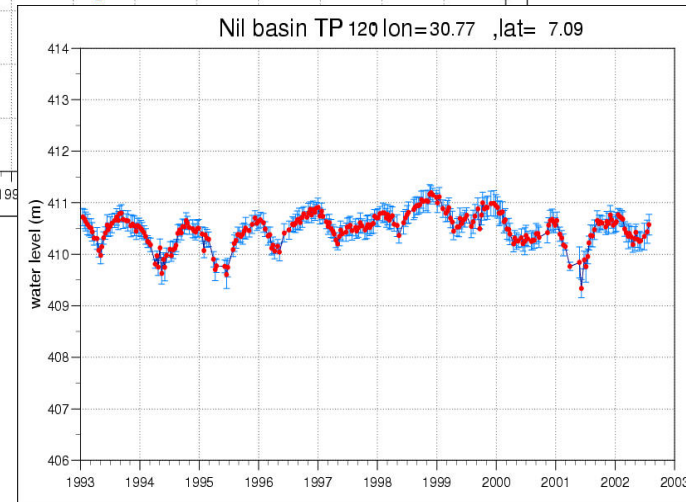
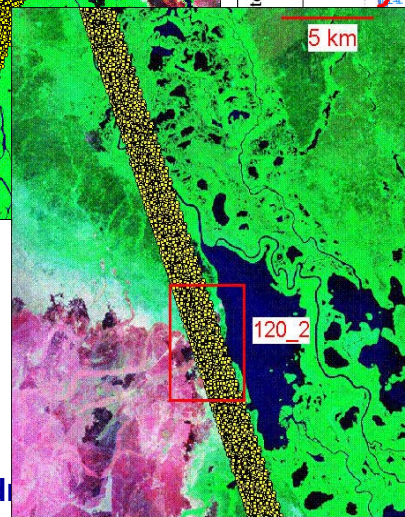
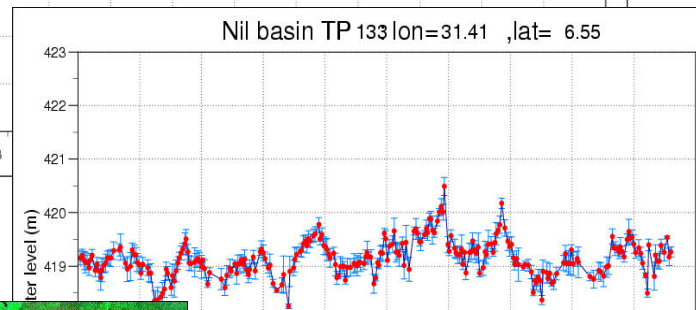
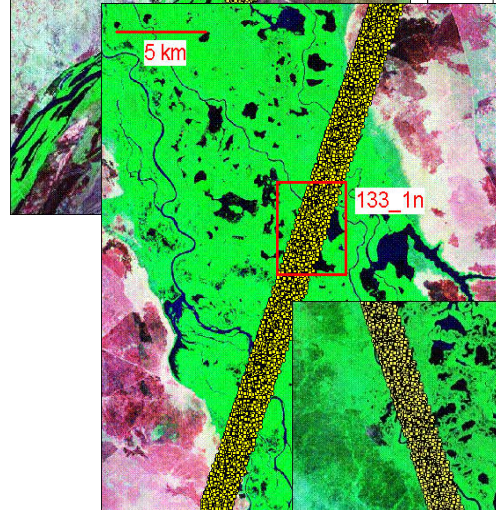
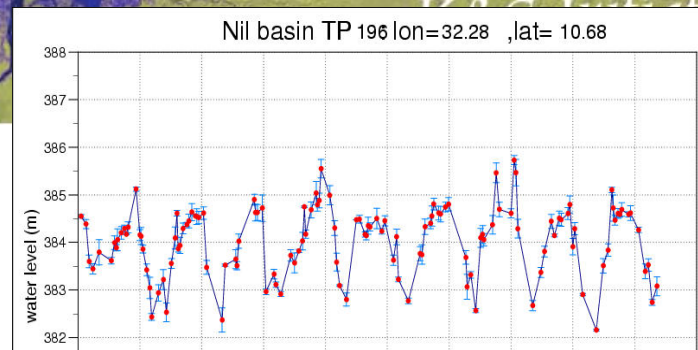
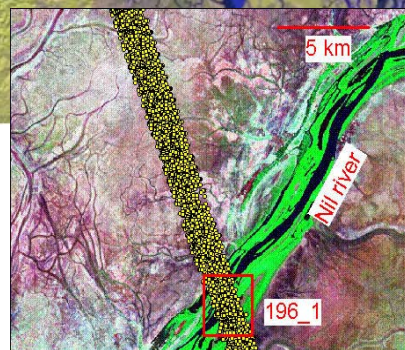
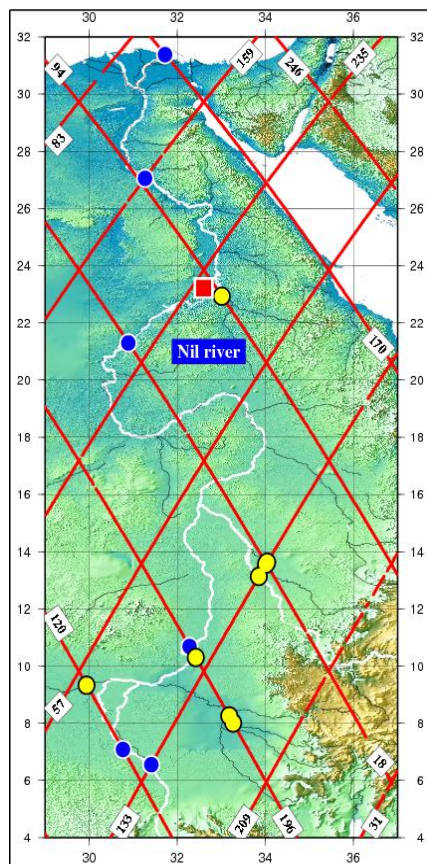
Lisa-Maria Rebelo  
International Water Management Institute  
Addis Ababa, Ethiopia





# ALOS

ion led by JAXA



Surface water monitoring by satellite altimetry  
<http://www.legos.obs-mip.fr/soa/hydrologie/hydro>

Lisa-Maria Rebelo  
 International Water Management Institute  
 Addis Ababa, Ethiopia

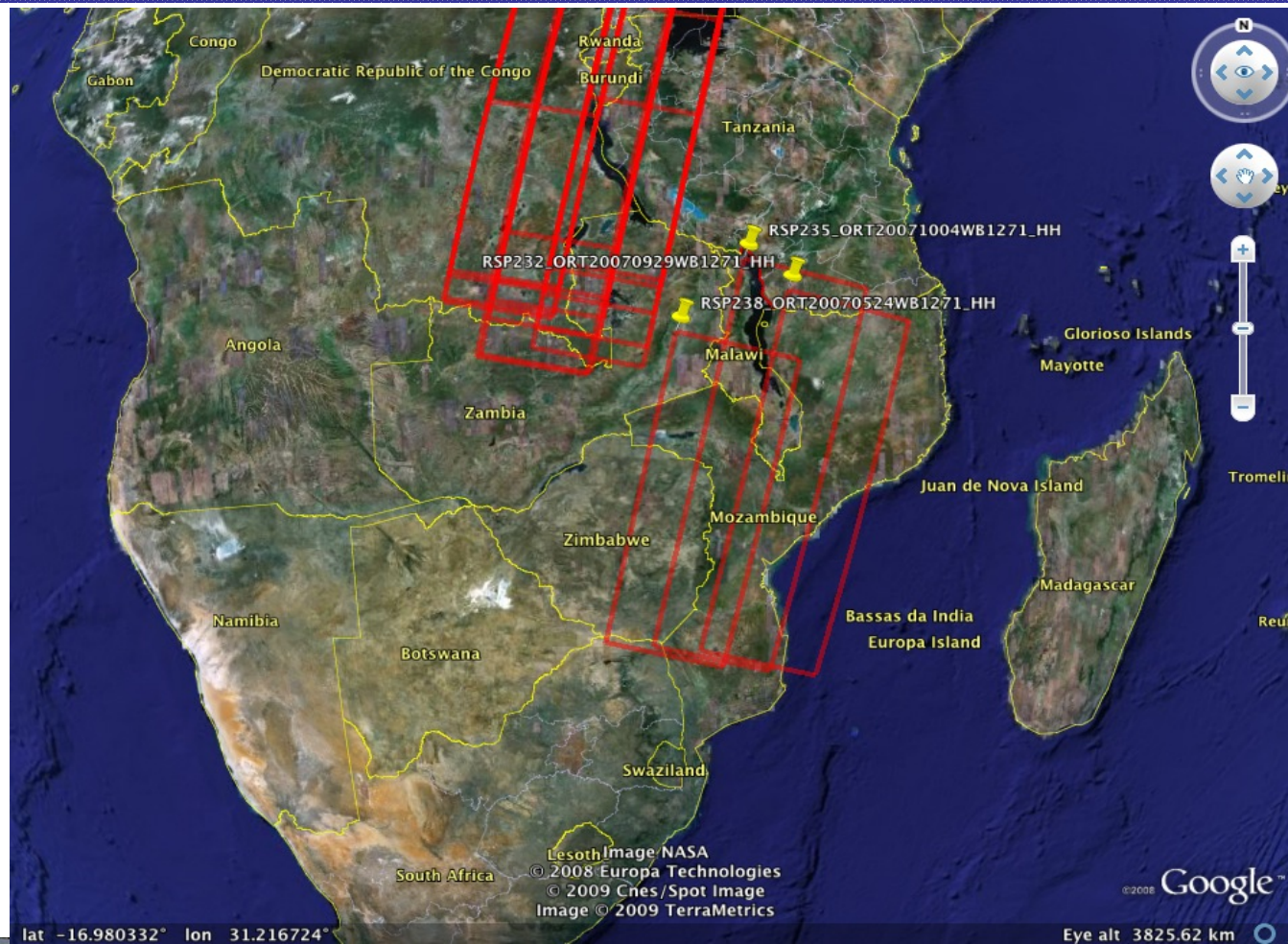




# ALOS

K&C Initiative  
An international science collaboration led by JAXA

## Extension Phase Proposal: Wetland Theme



Lisa-Maria Rebelo  
International Water Management Institute  
Addis Ababa, Ethiopia

## Extension Phase Proposal: Wetland Theme

Liaison, co-ordination and collaboration with the Ramsar Convention

- Through the Scientific and Technical Review Panel
- Through IWMI's role as an IOP
- Assistance in the dissemination of wetland products
- Specifications of a GWOS