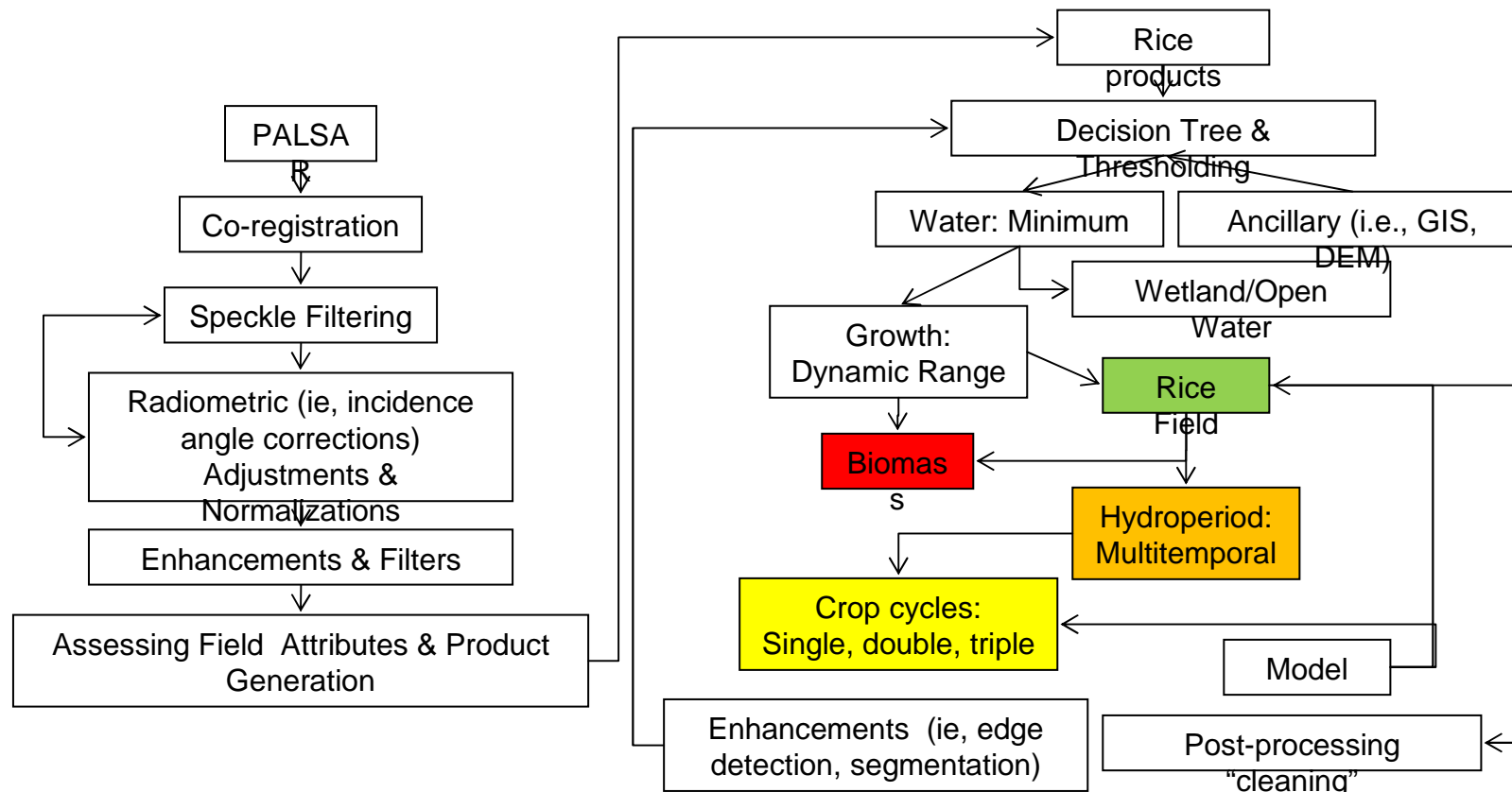


Phase 2 Plans for Rice Work

- **Finish rice analysis for Asia**
 - ✓ Map the extent of rice paddies in Pan Asian region
 - ✓ Map rice cropping systems in Pan Asian region
 - ✓ Map inundation period of rice agriculture in Pan Asian region
 - ✓ Map and monitor rice biophysical characteristics (biomass, LAI, age, height) in Pan Asian region.
 - ✓ Use PALSAR derived products to drive a biogeochemical model to estimate net GHG emissions.
- **New Objective: Support CA Rice GHG Offset demonstration project (CA Rice Commission and EDF, with demo to ARB) – setting baseline water management (2006-2009)**

- **Task: Algorithm Refinement**

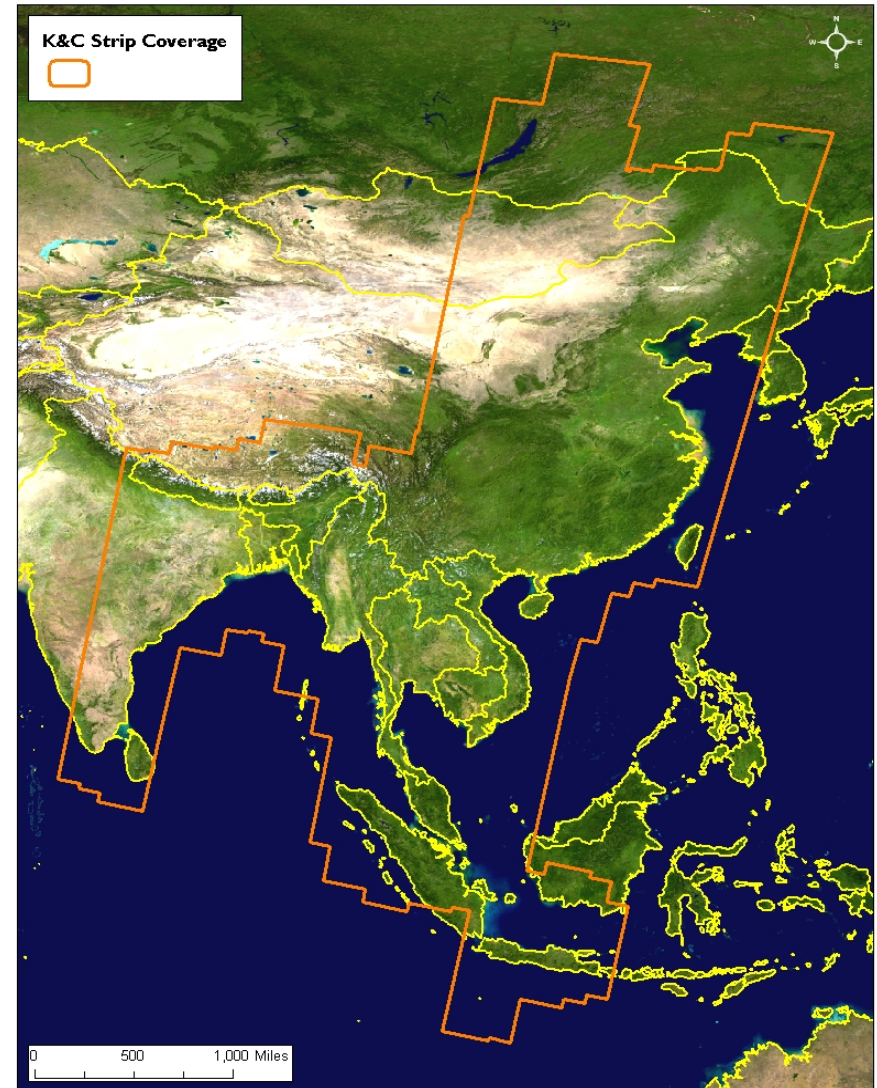
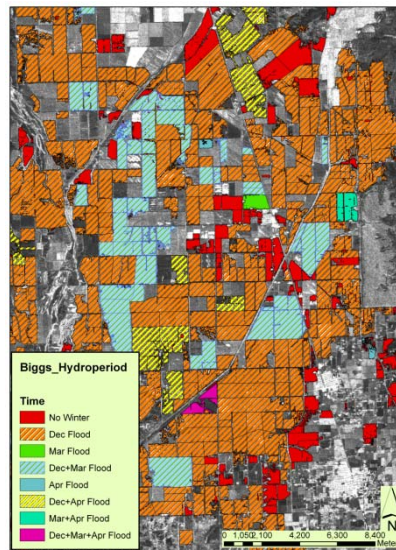
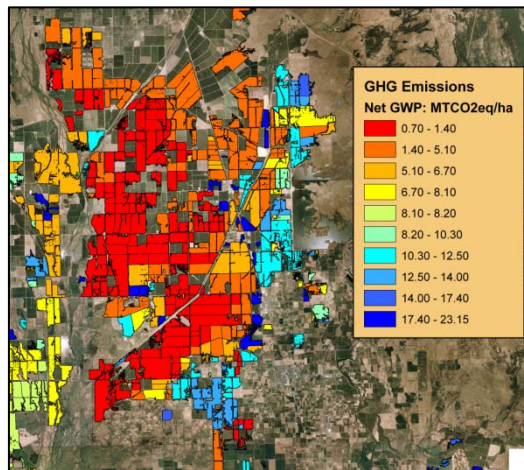
- **Task: Algorithm Refinement**
 - Integrate Fine Beam data into processing stream to improve area estimates, continue to rely on ScanSAR for temporal information.



Extension Phase Proposal Project

Underway: Pan-Asian Rice Maps

- Apply developed methods to Pan-Asian using K&C strips for continental scale maps & monitoring
- Updated schedule: June 2009 deliverables



Extension Phase Proposal Project

Validation: *Field photos & accuracy assessment*

- No new imagery required (will use 50 AUIG quota)

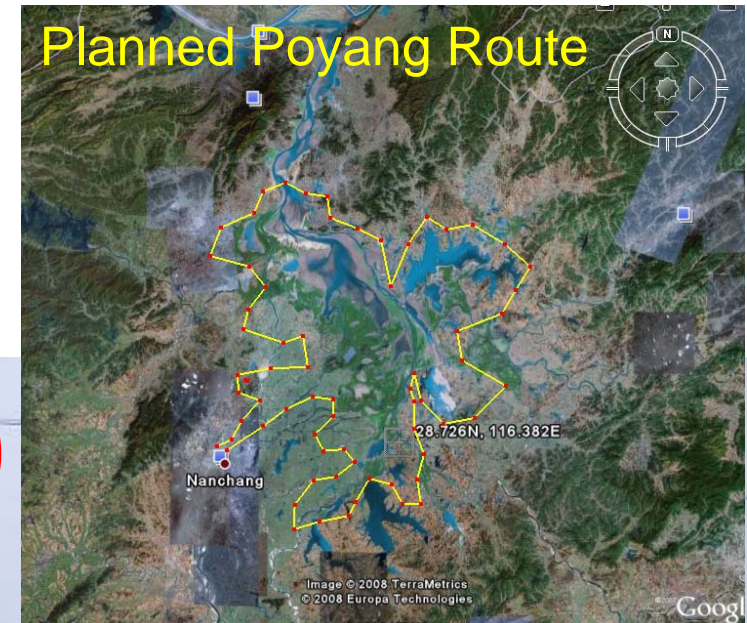
Underway: Poyang Lake, Jiangxi Province, China
December 2008 & January 2009

Upcoming Validation Schedule

- California, USA January 2009
- Java, Indonesia Spring 2009
- Accuracy & characteristics such as landscape position (isolated, mixed farming, continuous commercial...), paddy size, elevation, crop cycles, planting dates, flooding, etc...

2007-08-05
115.9278 °E
29.091 °N
12m altitude.

Planned Poyang Route

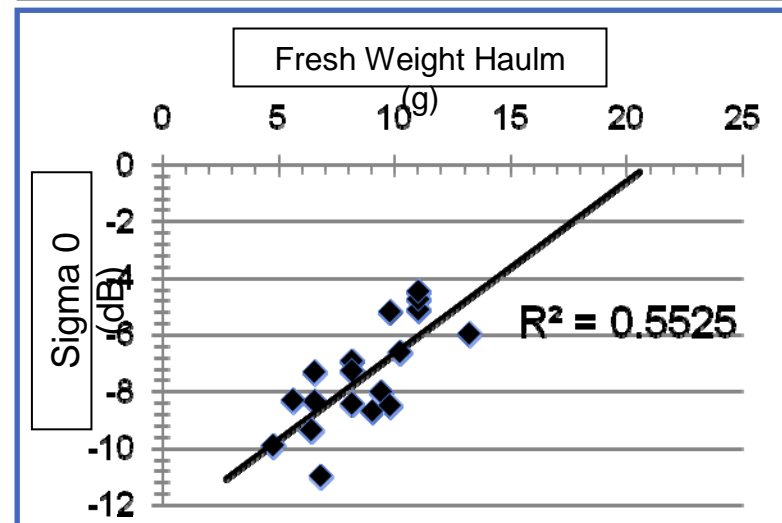
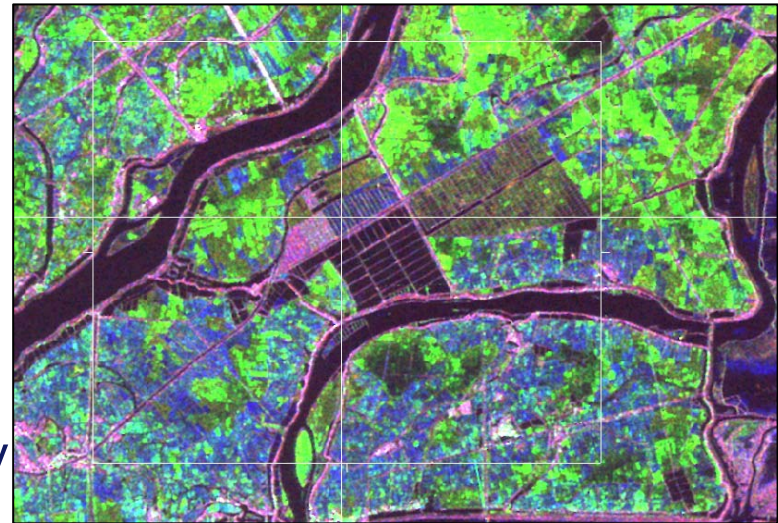


Example GPS Field Photo

Extension Phase Proposal Project

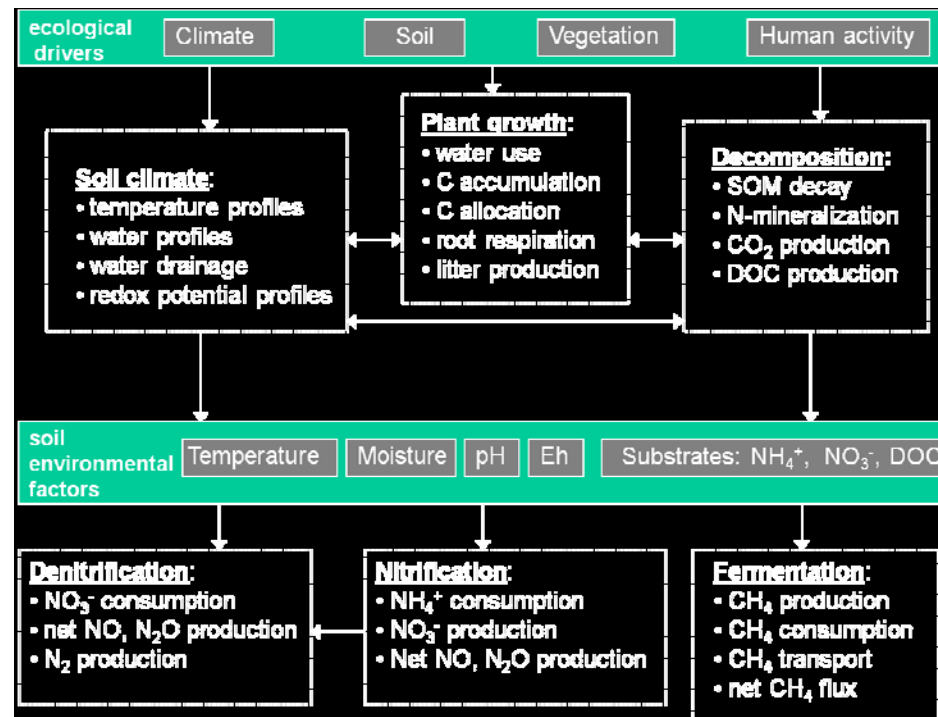
Continue field data collection with partners

- Fine tune mapping biophysical attributes such as biomass
- Use multiple sites & rice cultivars
- Schedule: Ongoing 2009 campaign planned
- Data requirements: new concordant imagery



Extension Phase Proposal Project: DNDC GHG Model

- GHG and biogeochemical modelling underway during 2009 uses PALSAR products as parameterization
 - Continued work in California (funded by EDF)
 - Asia work: unfunded at this time.



Phase 2 Funding

- **NASA LCLUC Program: Developing land cover products in Monsoon Asia in Support of Mid-Decadal Global Land Survey (MDGLS)**
 - 2 Year project, Dec 2008 – Nov 2010
 - PI: Xiangming Xiao
 - Focus: development of land cover products based on the integration of Landsat and PALSAR
- **NIH HPAI Supplemental Funding**
 - Support Avian Influenza Risk Assessment Models (with OU and FAO)
 - Mapping rice inundation dynamics, cropping cycles (spatial and temporal interface between domesticated poultry and migratory waterfowl).
 - 1 year demonstration: 2009.

Phase 2 Strip Data Request

- **New Data Requests – To be coordinated with other projects in region...In order of priority, depends on Mosaic Plans (timing, content, etc)**
 1. China Rice: FBD (14 RSPs) 2007 3 summer cycles 12, 13 and 14 (42 strips)
 2. SE Asia 2007 FBD data, cycles 12, 13 and 14, 20 RSPs (60 strips)- Add 2009 (with Tony and Laura)
 3. California Rice 2009: 6 RSPs, FBS & FBD, Cycles 24, 28, 29 and 30. Can we request ScanSAR winter acquisitions (not in current Obs Plan or should this be done via 50 scene allocation)? (24 strips)
 4. China Rice: FBD (14 RSPs) for 2009 for 3 summer FBD cycles 28, 29 and 30 (42 strips)
 5. SE Asia/China ScanSAR 2009
 6. JAVA ScanSAR 2009

Phase 2 Product Delivery Schedule

- **Maps of rice paddy extent**
 - China Rice 2007 (July 2009)
 - Mainland Southeast Asia 2007 and 2008 (December 2009)
 - Eastern India 2008 (February 2010)
 - California, USA 2007 and 2008 (April 2009)
- **Maps of rice cropping systems (single, double and triple)**
 - China Rice 2007 (September 2009)
 - Mainland Southeast Asia 2007 and 2008 (February 2010)
 - Eastern India 2008 (July 2010)

Product Delivery Schedule cont.

- **Maps of rice paddy inundation dynamics**
 - China Rice 2007 (September 2009)
 - Mainland Southeast Asia 2007 and 2008 (February 2010)
 - Eastern India 2008 (July 2010)
 - California, USA 2007 and 2008 (September 2009)
- **Maps of rice biomass development**
 - China Rice 2007 (December 2009)
 - Mainland Southeast Asia 2007 and 2008 (August 2010)
 - Eastern India 2008 (December 2010)
 - California, USA 2007 and 2008 (December 2009)