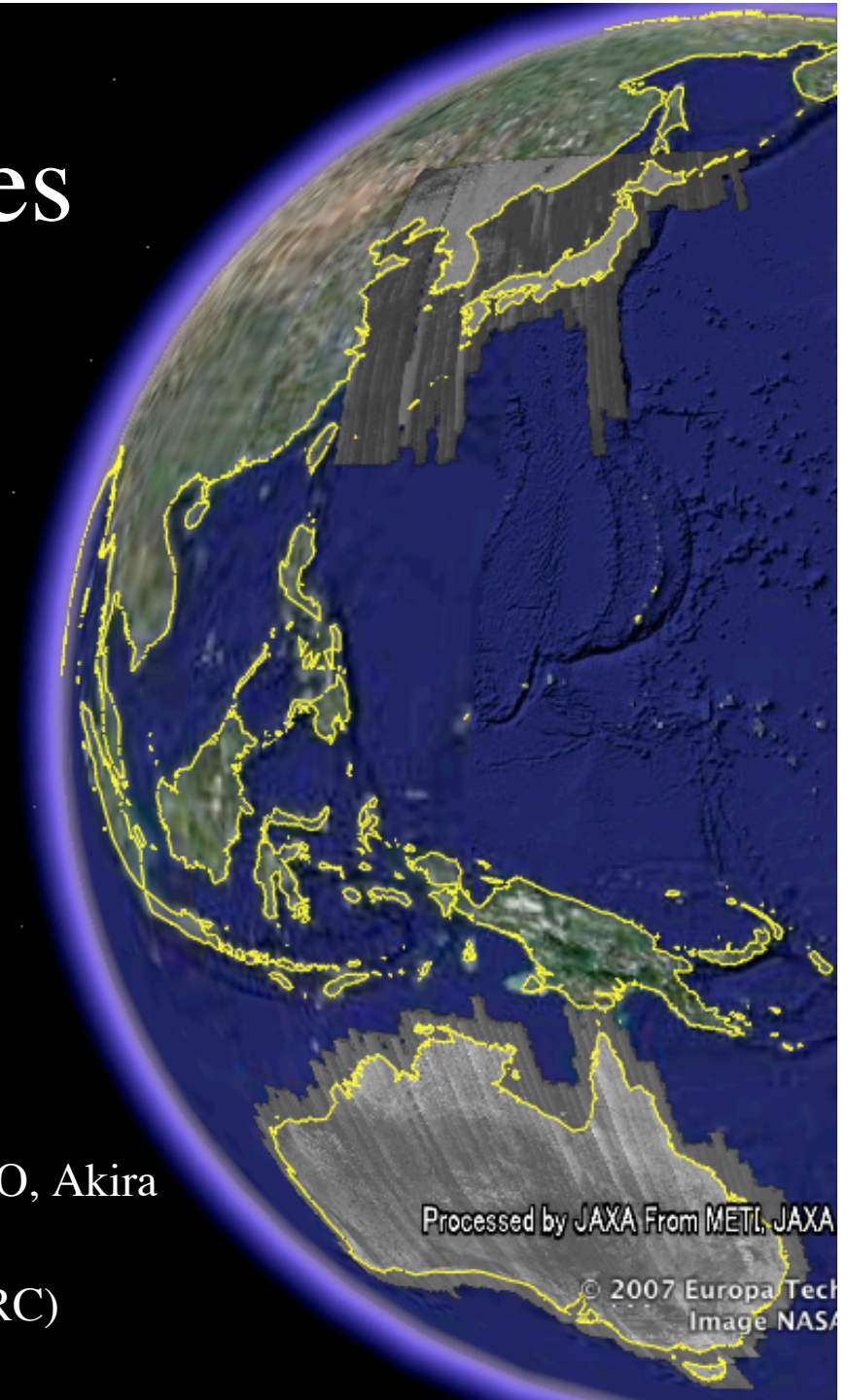


# Browse Mosaic Images on Google Earth

Generating KML file in AGAP

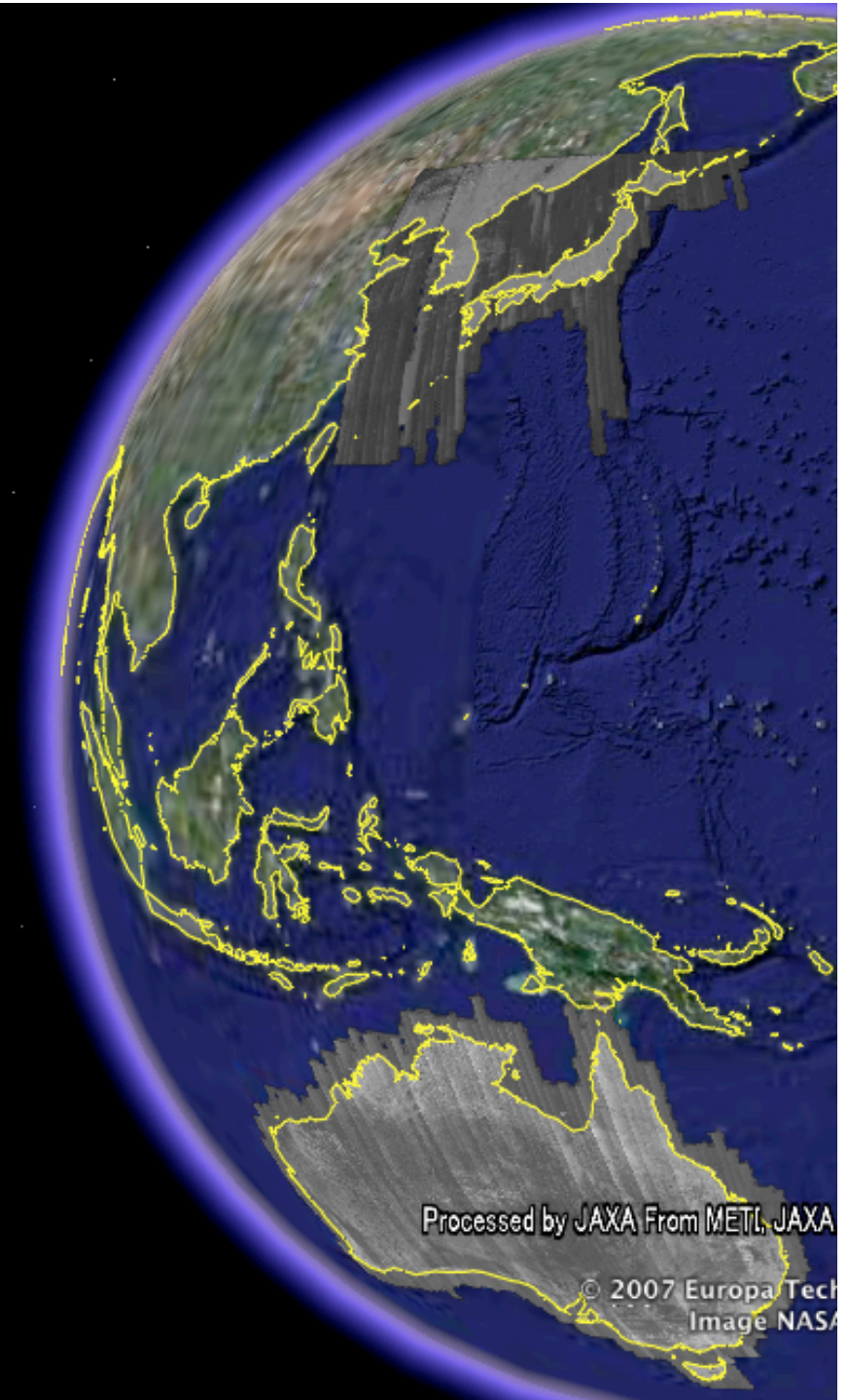
Akira MUKAIDA, Takahiro OTAKI, Daisuke SANGO, Akira  
DEGUCHI(RESTEC)

Masanobu SHIAMDA, Takeo TADONO (JAXA/EORC)



# Contents

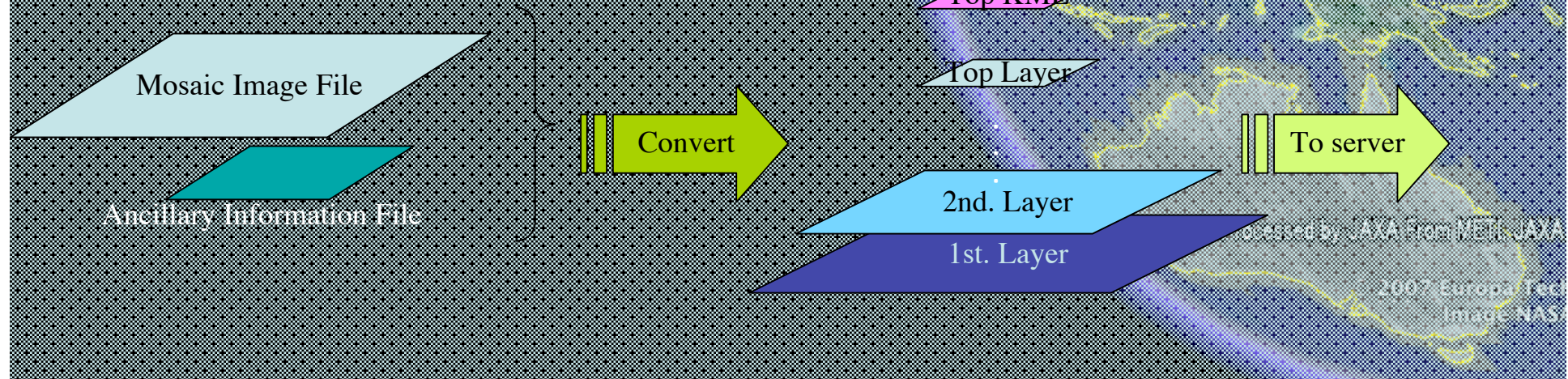
- KML file generation
- Structure of the KML file
- Future plans and Issues





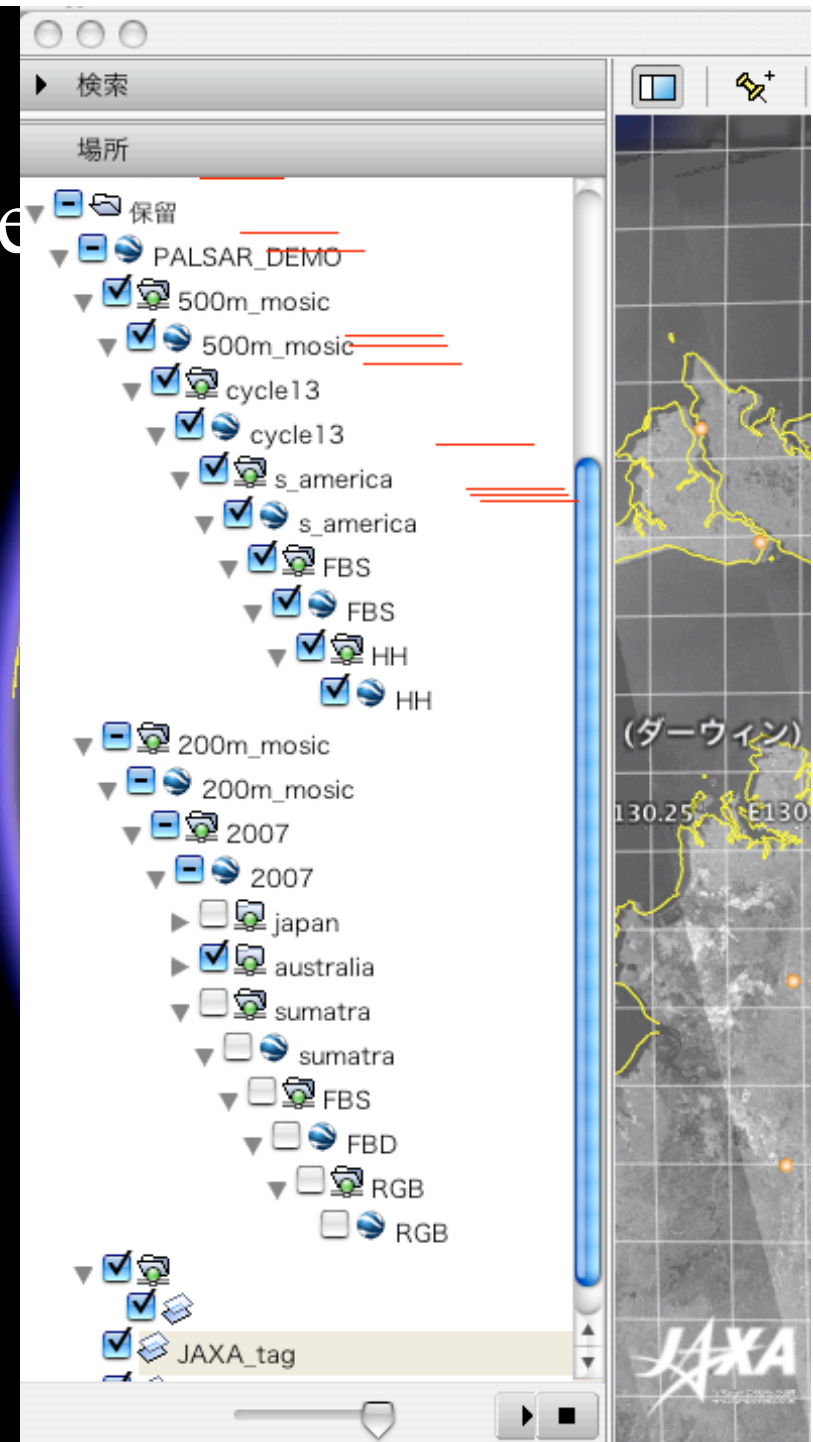
# KML file generation

- KML file is directly generated from RAW file (BSQ)
  - Eq. Lat&Long map projection
  - Radiometric correction
  - Stretch
  - 8bit
  - Image size and coordinates of 4 corners



# Structure of the KML file

- 500m Browse Mosaic
  - Cycle number
    - Continent name
      - Obs. Mode
        - » Polarization
- 200m Mozaic
  - Period (Year)
    - Continent name
      - Obs. Mode
        - » Polarization



# Future plans and Issues

- Add annotations and links
- Stretch algorithm for better radiometry
- Color composite polarization image
  - RGB image is heavy
- Map projection for higher latitude mosaics

<Demo site>

