

# Dynamics of the Pantanal Ecosystem

Maycira Costa, Kevin Telmer, Terri Evans  
University of Victoria, Canada



- K&C products**
- Water flooding dynamics
  - Habitat mapping  
= Lakes classification
  - Backscattering library

Funding: NSERC

NGS?

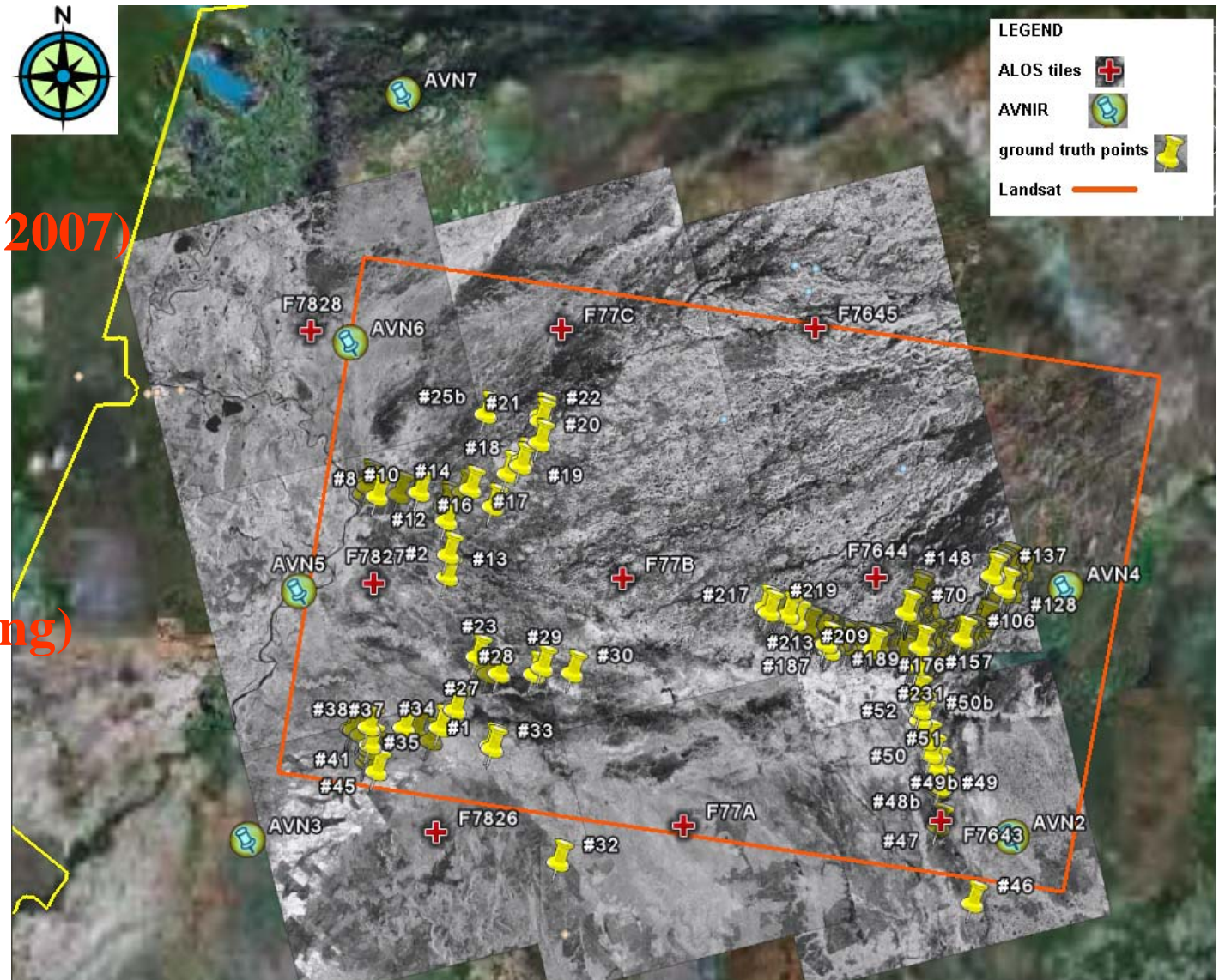


University  
of Victoria

## Processing status:

## Data base

- 6.25 m res (FBS 2007)
- FBD 2008
- Google Earth
- backscattering
- geometry
- strip (starting)
- ScanSAR (starting)



## Problems/solutions:

1<sup>st</sup>: (\*.5GUA) images + LED file information = no success + images do not mosaic properly

2<sup>nd</sup>: Emails.. Shimada-san, Ake, Bruce, Laura ....(factor\_m... error...error)

3<sup>nd</sup>: Use ASF software (\*.5GUA images + LED file) = geotiff file  
(UTM 21 row C WGS84)

Kind of Success but.... end up in Greenland!

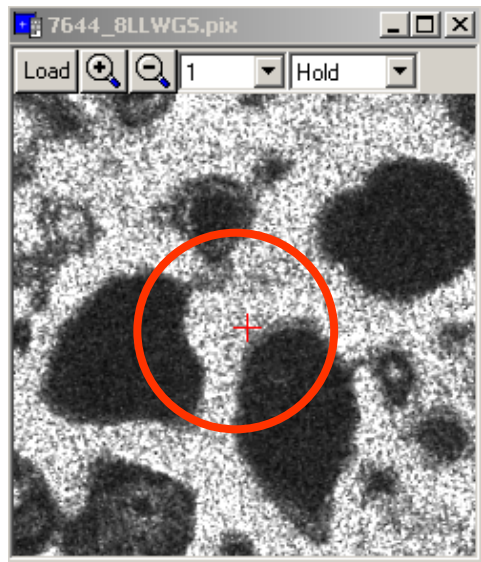
4<sup>th</sup>: Re-project to Lat/Long = Miracles happen! It works.

**Major Success... we were finally in the Pantanal  
and images mosaic properly**

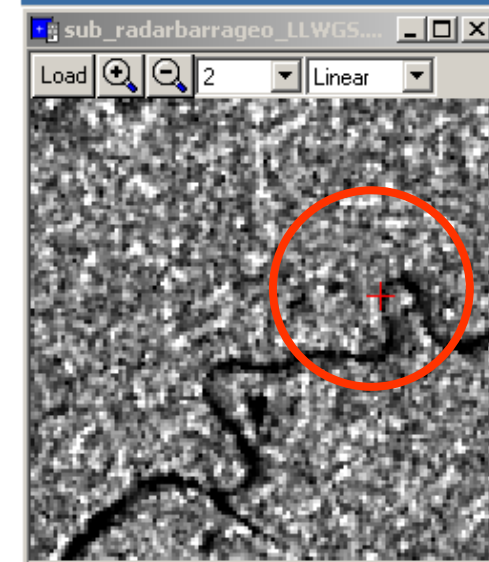
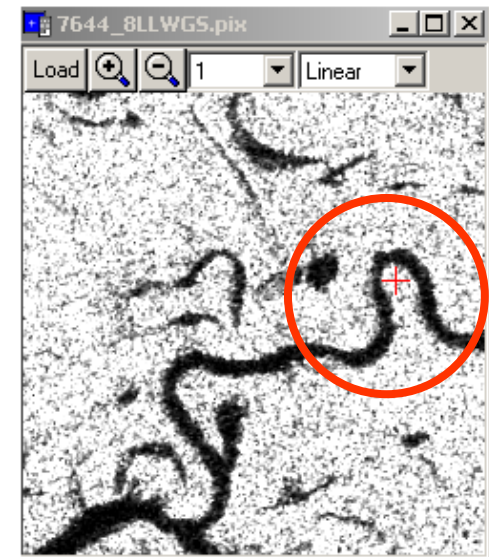
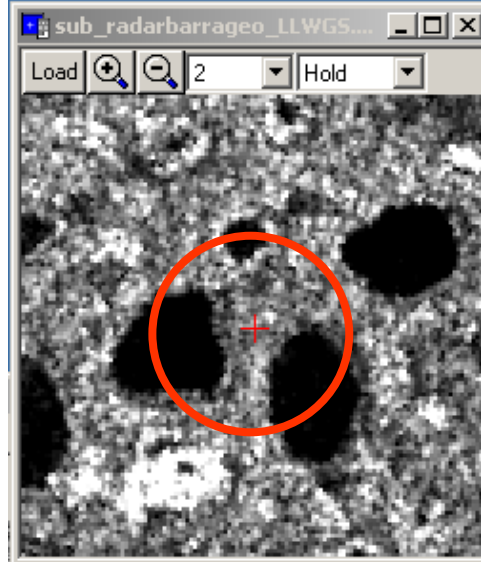
5<sup>th</sup>: Field work in June/July 2008 (ALOS/Radarsat2) / Wetlands International  
Conference

Some results: still small geometric error

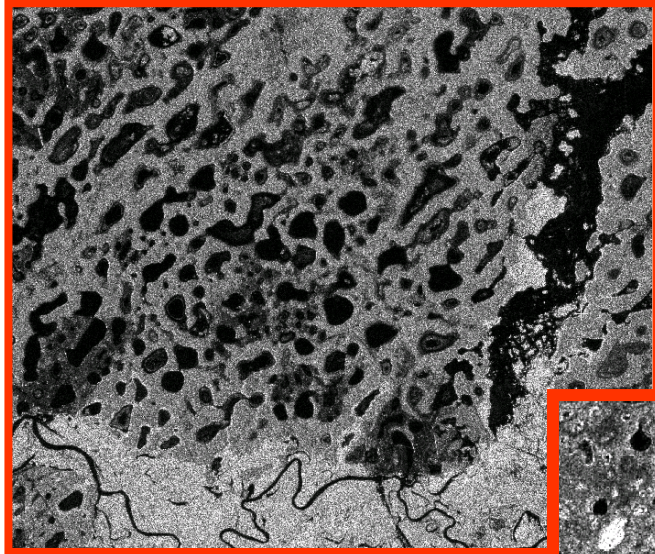
ALOS



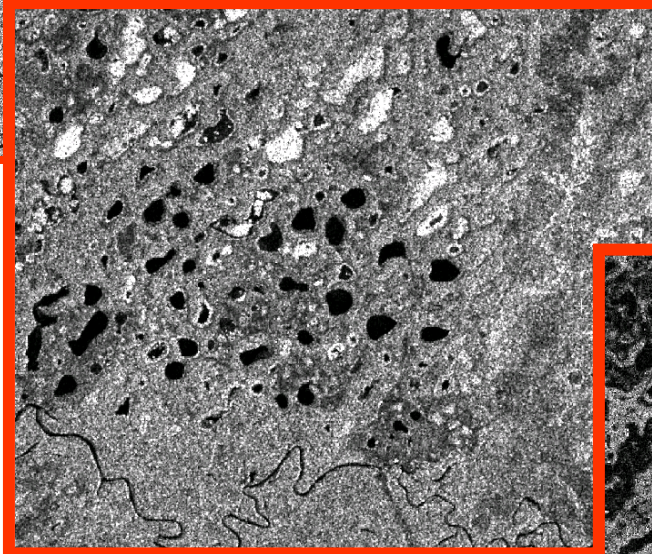
Radarsat 1



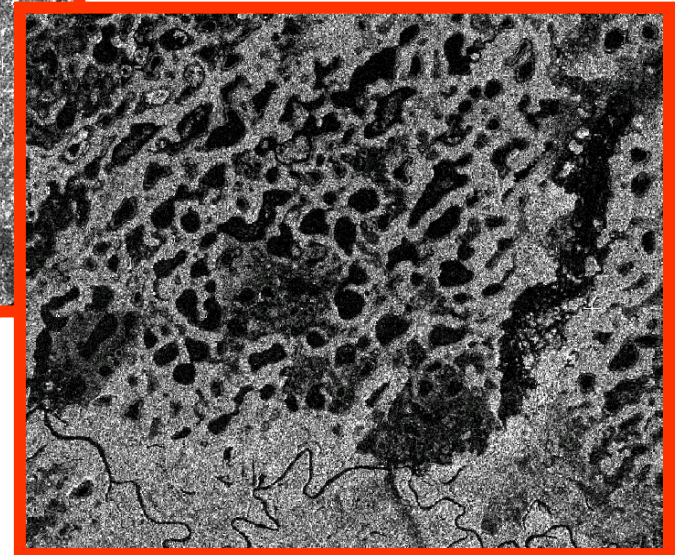
Some results: with standard geometric correction (time series)



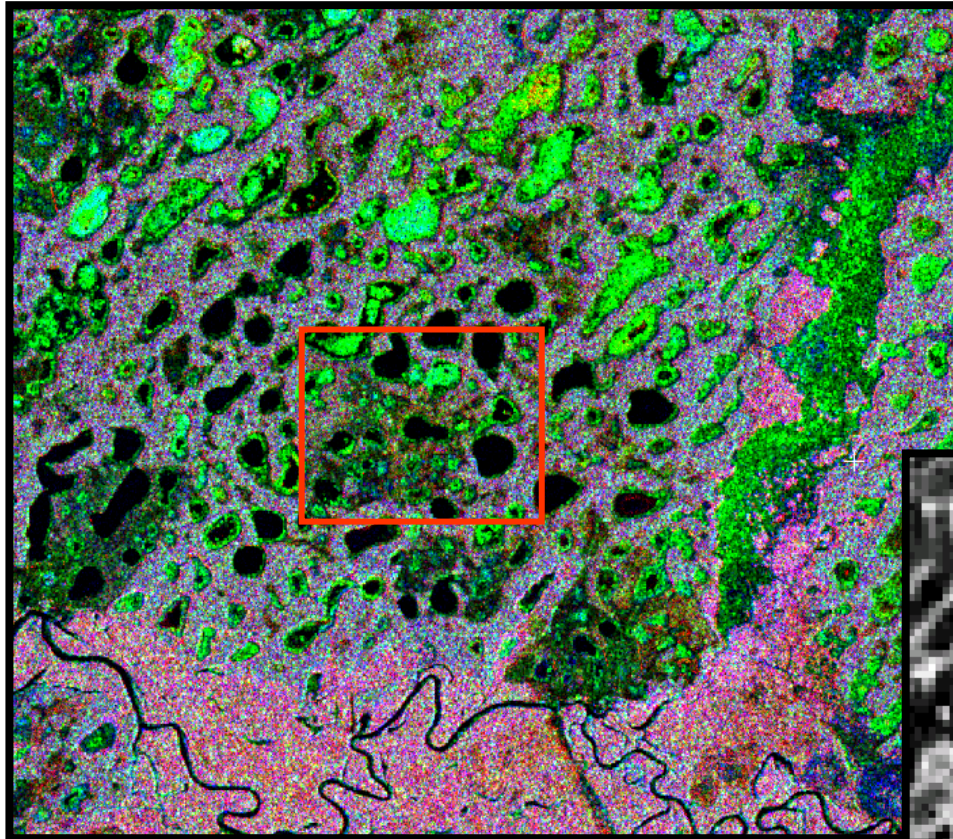
2007 - ALOS



2001- Radarsat 1

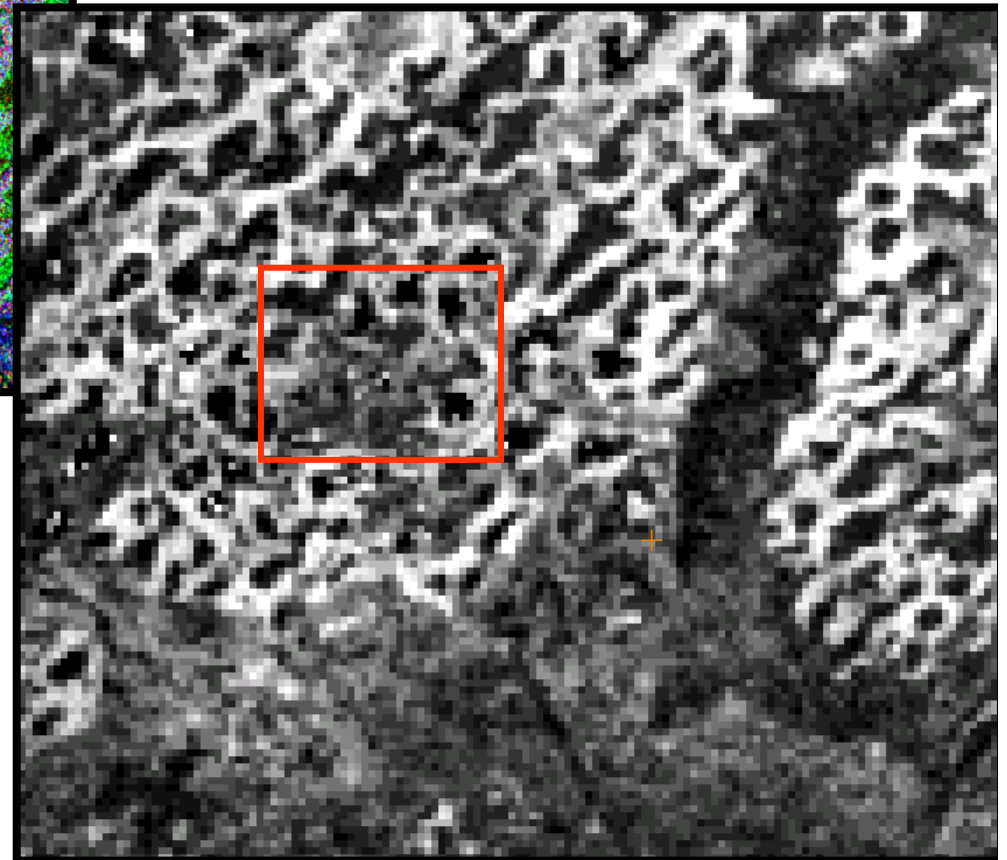


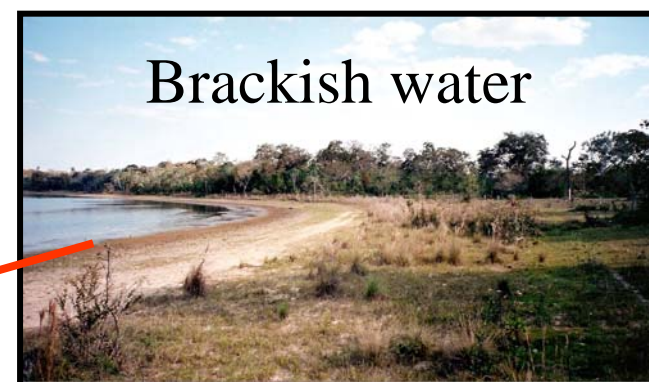
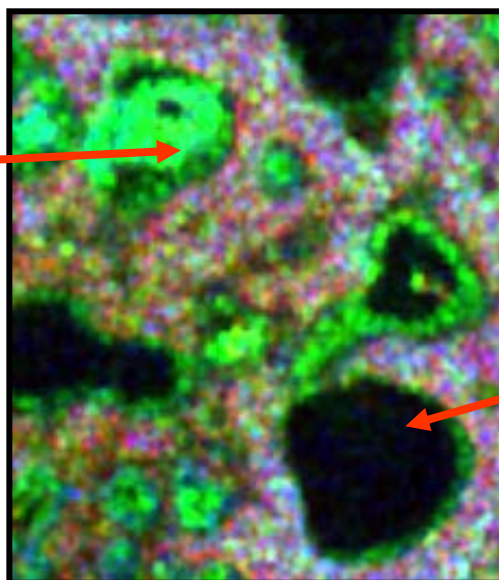
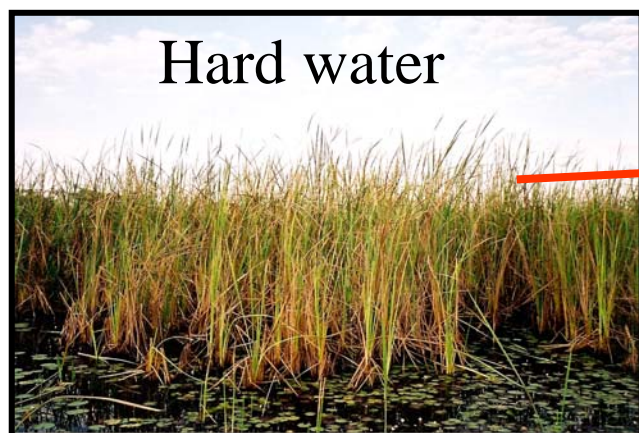
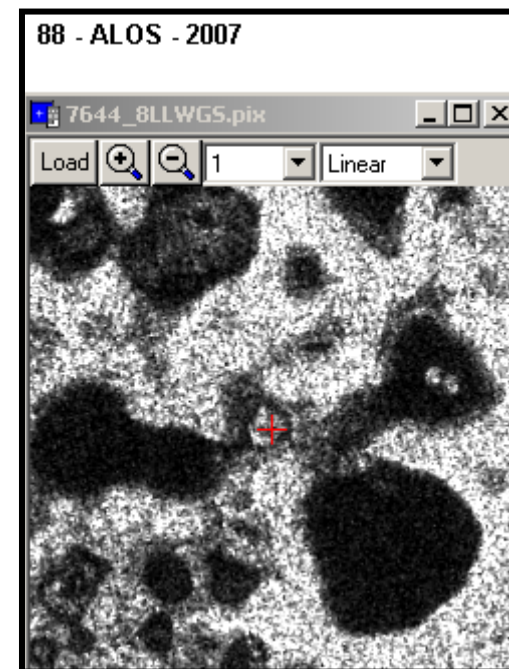
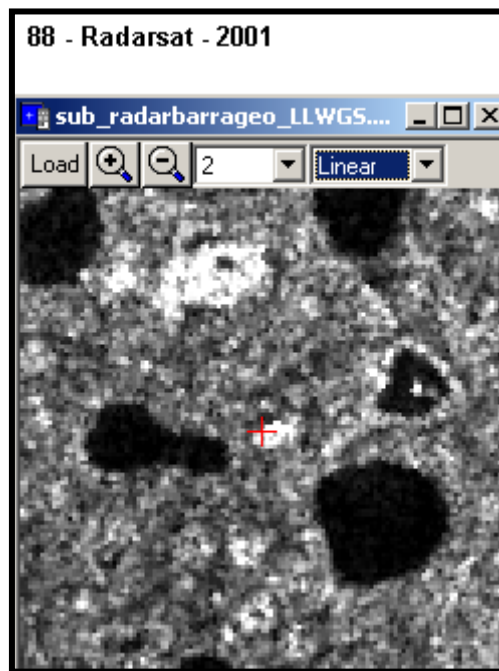
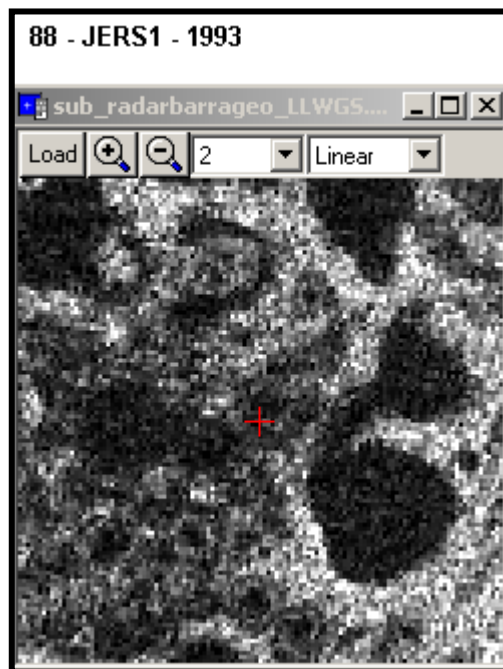
1993 - JERS

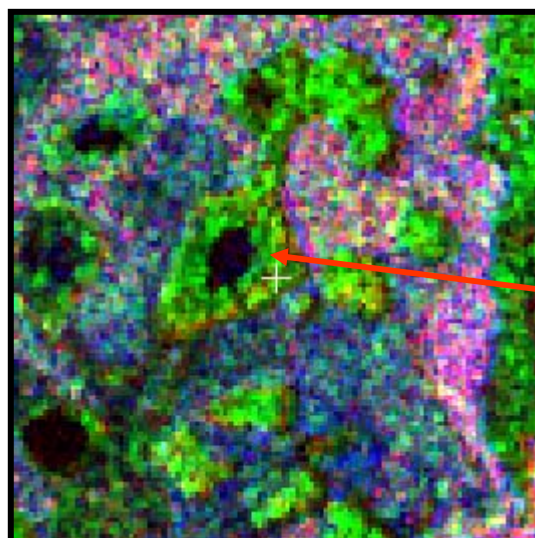
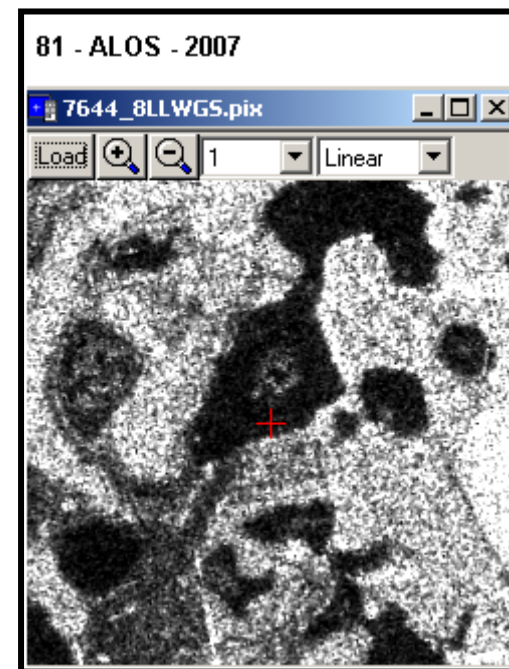
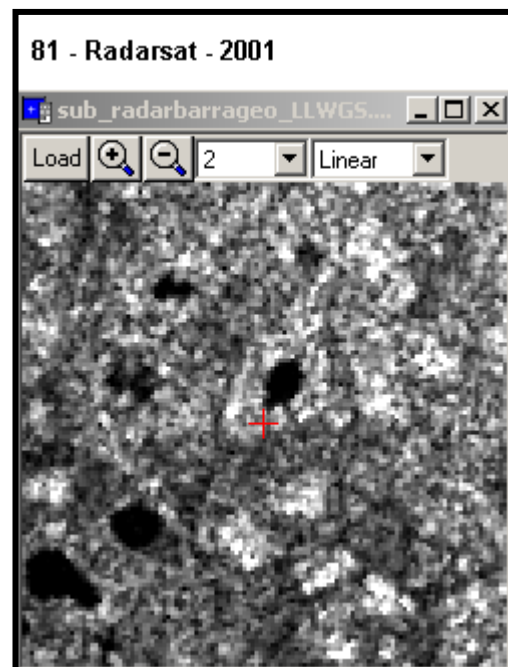
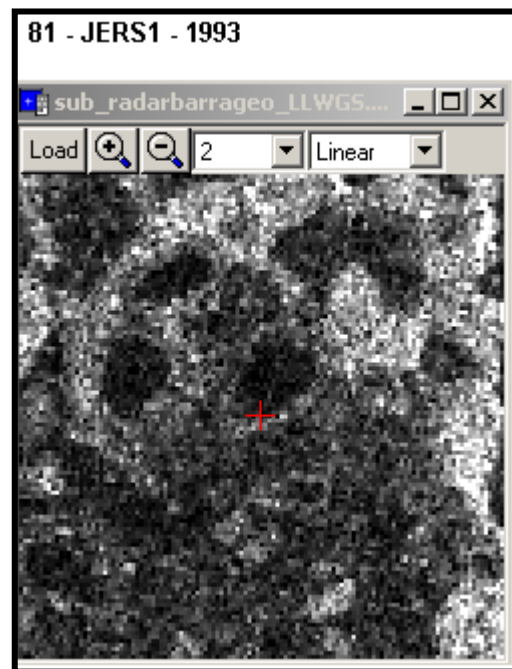


R:ALOS 2007  
G:Radarsat 2001  
B:JERS 1993

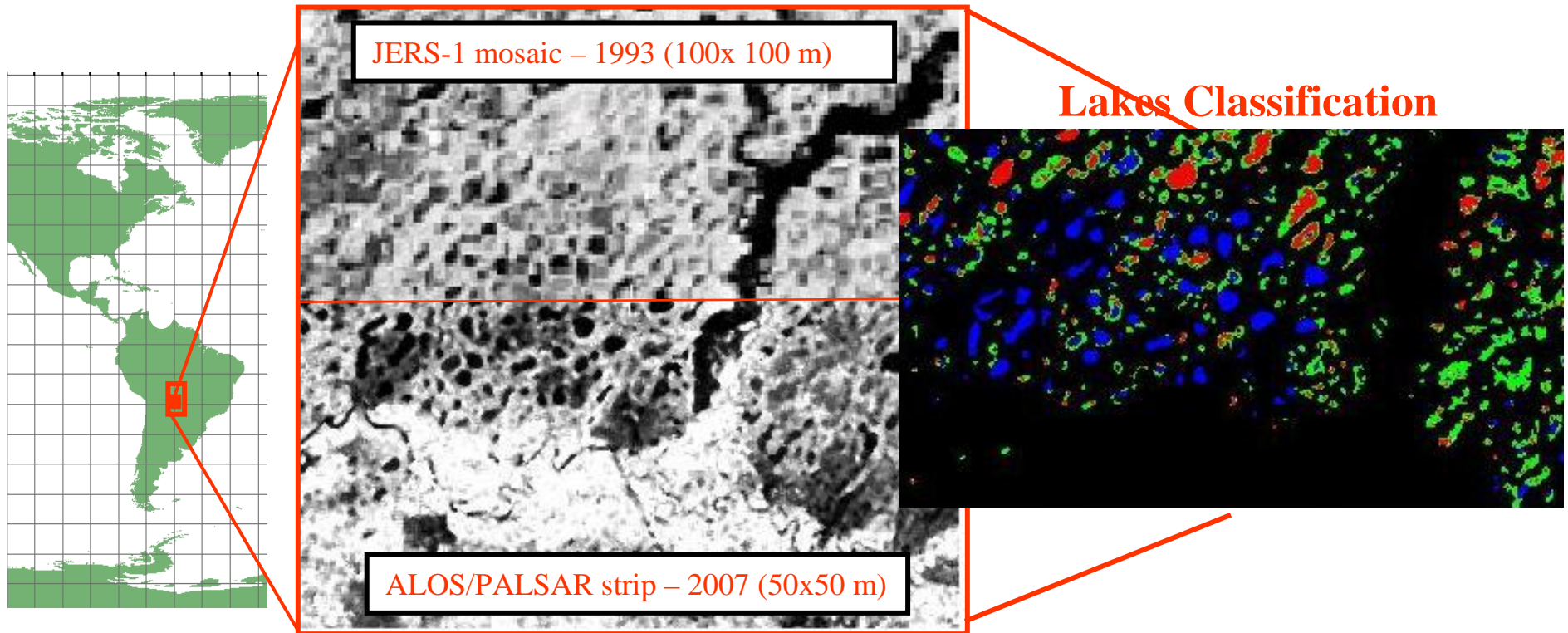
SRTM



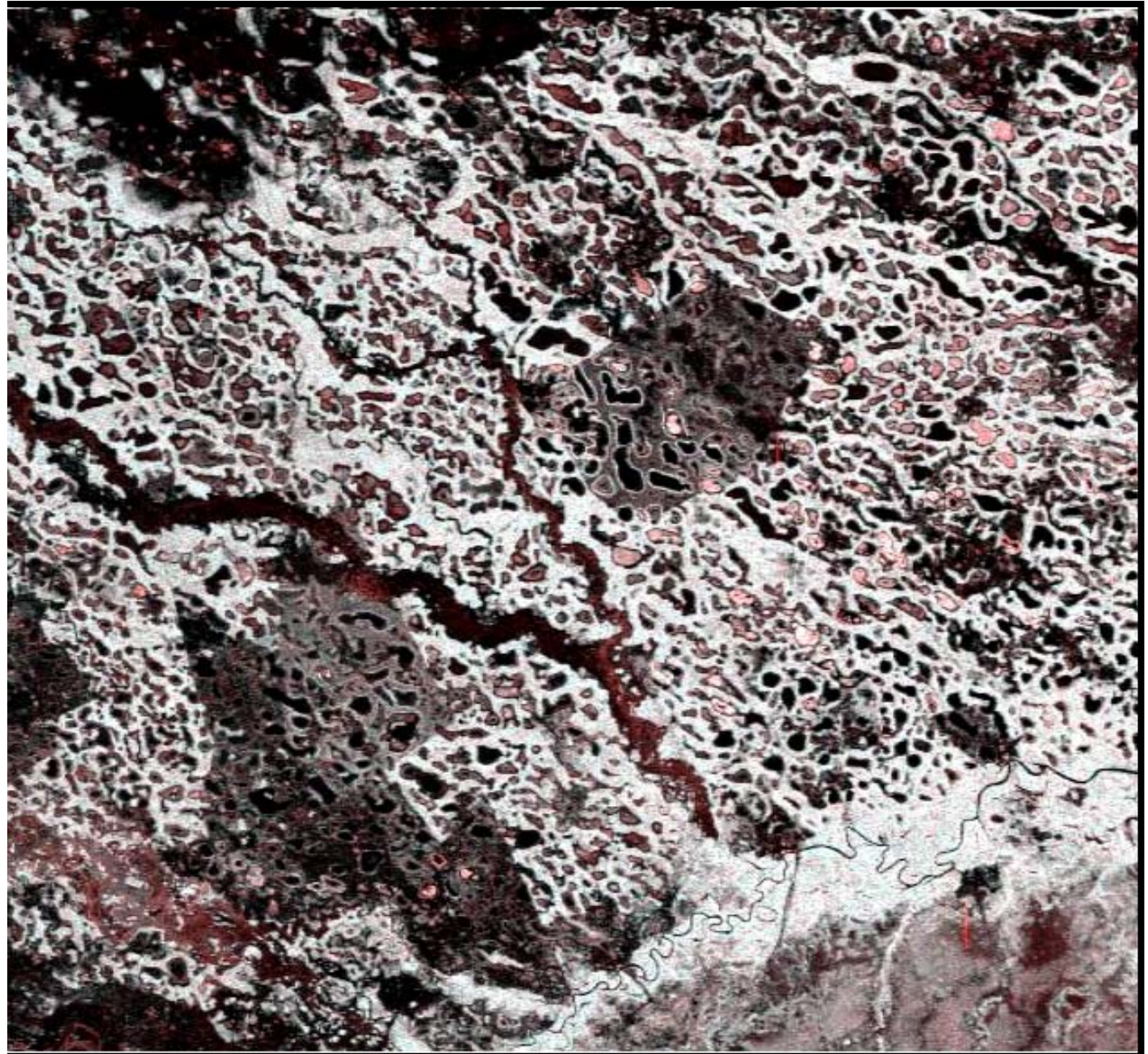




Strip data.... Start to look at. But it seems the geometry will be an issue



## Dual polarization – HH and HV strip data



## Problems/solutions:

- Strip data: geometry.....
- Mosaic: 1 mosaic dual pol by the end of 2008

Impact: flooding map only possible in 2009

- National Geographic Society.....waiting
- FBD data. Strip data?
- Radarsat 2 / ALOS
- Field work – June/July

