

# PALSAR-2 mosaics and path image request procedures and EORC product transfer procedures

Keiko Ishii and RESTEC data production Team (RESTEC)

Masanobu Shimada (JAXA)

Ake Rosenqvist (soloEO)

# Table of Contents

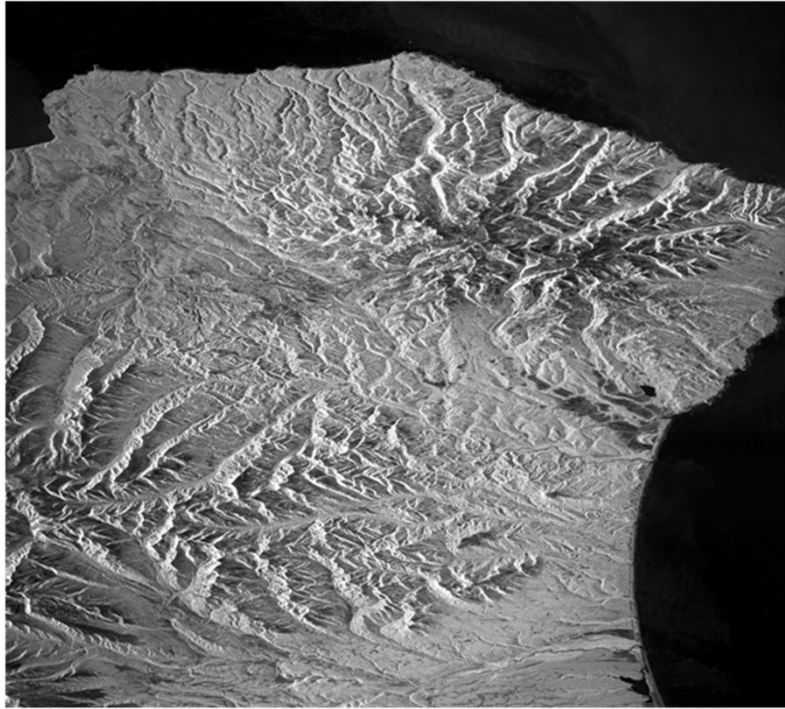
- PALSAR-2 Product Provision (Plan)
- PALSAR-2 Image Samples
- EORC Product Request Procedure
- EORC Product Transfer
- Summary

## PALSAR-2 Product Provision (Plan)

- Path products
  - Observation modes
    - FBD (High resolution 10m mode, Dual polarization)
    - WBD (ScanSAR 350km mode, Dual polarization)
  - Product Provision
    - after SIGMA-SAR tuning completed (by the end of this fiscal year)
  - Specification
    - Not determined
- Mosaic products
  - Not determined

# PALSAR-2 Path Image Sample

## Path Image



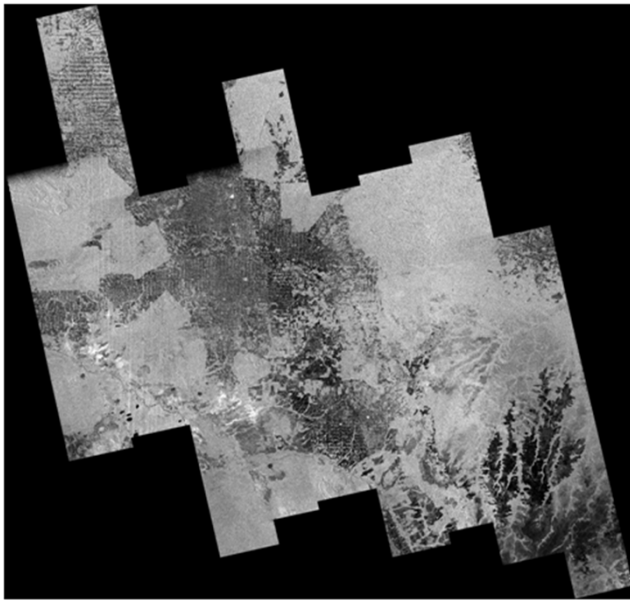
FBD: Kamchatka



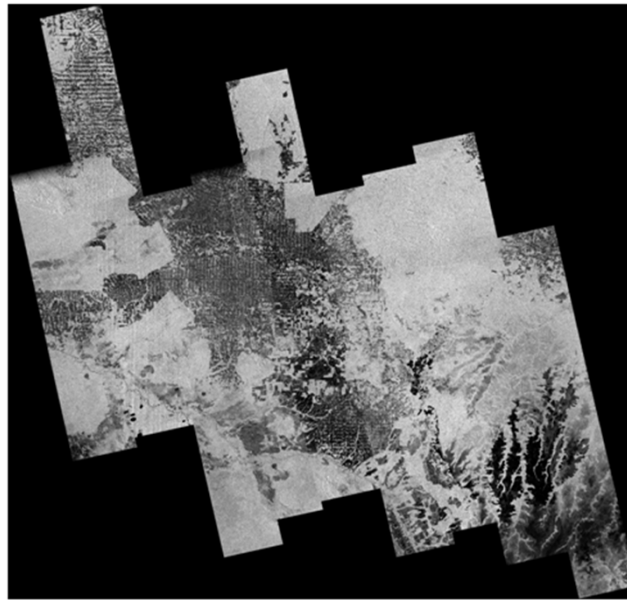
WBD: Brazil

# PALSAR-2 Mosaic Image Sample

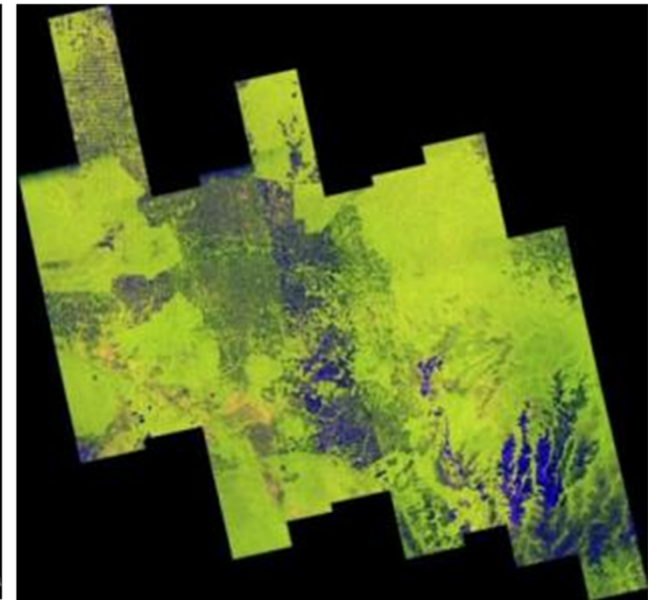
Use different 3 modes: F2-5(Off Nadir: 28.2)/F2-6(Off Nadir: 32.5)/F2-7(Off Nadir: 36.2)



HH

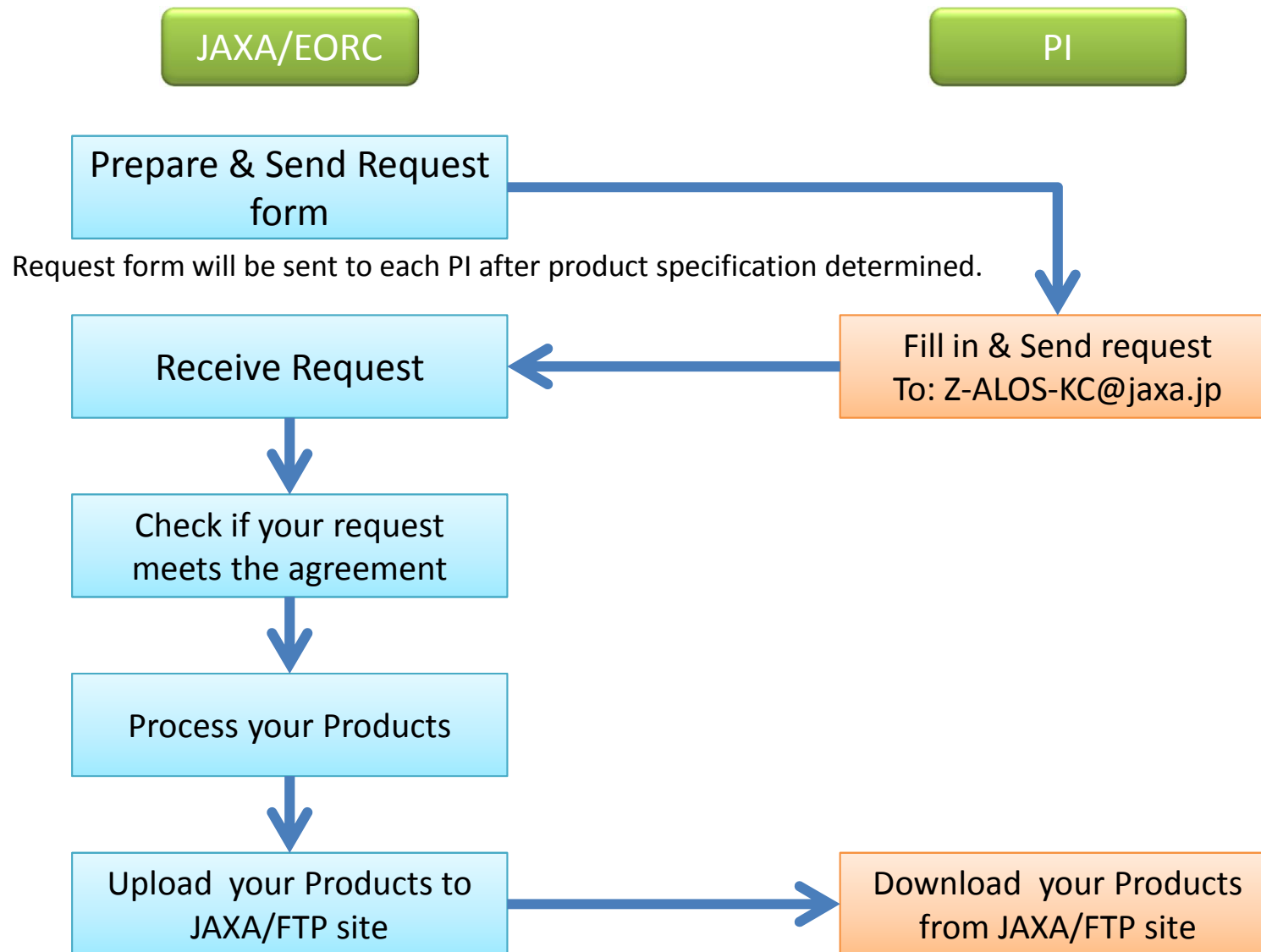


HV



Color Composite Image  
R: HH, G: HV, B: HH/HV

# EORC Product Request Procedure





A scenic autumn landscape featuring a calm pond in the foreground that reflects the surrounding trees and sky. The trees are in various stages of autumn, with some showing vibrant red and orange foliage, while others remain green. In the background, traditional Japanese buildings with thatched roofs are nestled among the trees. The sky is a clear blue with a few white clouds. The text "Thank you for your attention!" is overlaid in the center of the image.

Thank you for your attention!