

Americas ALOS Data Node
Status, Data Access and Tools
First Joint ALOS PI Symposium



Scott A. Arko
19 November, 2007



Introduction



- Welcome to the first Joint ALOS PI Symposium
- AADN has been providing data to research users throughout North and South America since October 24, 2006
- To date, we have provided in excess of 5000 scenes to JAXA PIs, AADN PIs, and individual researchers
- User response has been tremendous
 - High quality data from all three sensors
 - Exciting new opportunities with polarimetric L-band SAR
- AADN is very excited about what the future holds for ALOS and ALOS PIs
- We look forward to helping our users make the most of ALOS data and extend the exciting research we will hear about this week



AADN Overview



- ASF installed a new processing system for AADN operations
- Using the JAXA supplied L1 processors
- Nearly all processing operations are automatic, allowing for quick turnaround of jobs
- AADN is downlinking PALSAR and AVNIR-2 through the ASF Ground Station
- ASF User Services provides response to user questions, data queries and observation/acquisition planning
 - Available by phone and email
- Supporting ALOS PALSAR cal/val with our array of corner reflectors in Alaska



AADN Data Access



- AADN ALOS holdings are accessed through our web-based data portal and search engine (URSA)
- Full geographic search
- Select sensor and mode
- Select cloud cover
- View search results in Google Earth

The screenshot shows the URSA Alaska Satellite Facility User Remote Sensing Access web portal. The page displays a shopping cart with a total of 0 items and 0 cost. Below the cart, there are sections for Site Map, Order Options, My Orders, My Accounts, and Help. The main content area shows a table of orders with columns for Order ID, Date, Planning, Processing, Problem, Delivery, and Done. A detailed view of a specific order is shown below, with columns for Item, Status, Granule, Processing Type, Processing Option, and Media Type.

Order ID	Date	Planning	Processing	Problem	Delivery	Done
Order A647 (2 items)	NOV-28-2006	0	0	0	0	2
Order A648 (2 items)	NOV-28-2006	0	0	0	0	2
Order A654 (6 items)	DEC-20-2006	0	0	0	0	6
Order A659 (4 items)	DEC-21-2006	0	0	0	0	4
Order A661 (4 items)	DEC-26-2006	0	0	0	0	4
Order A663 (4 items)	DEC-28-2006	0	0	0	0	4

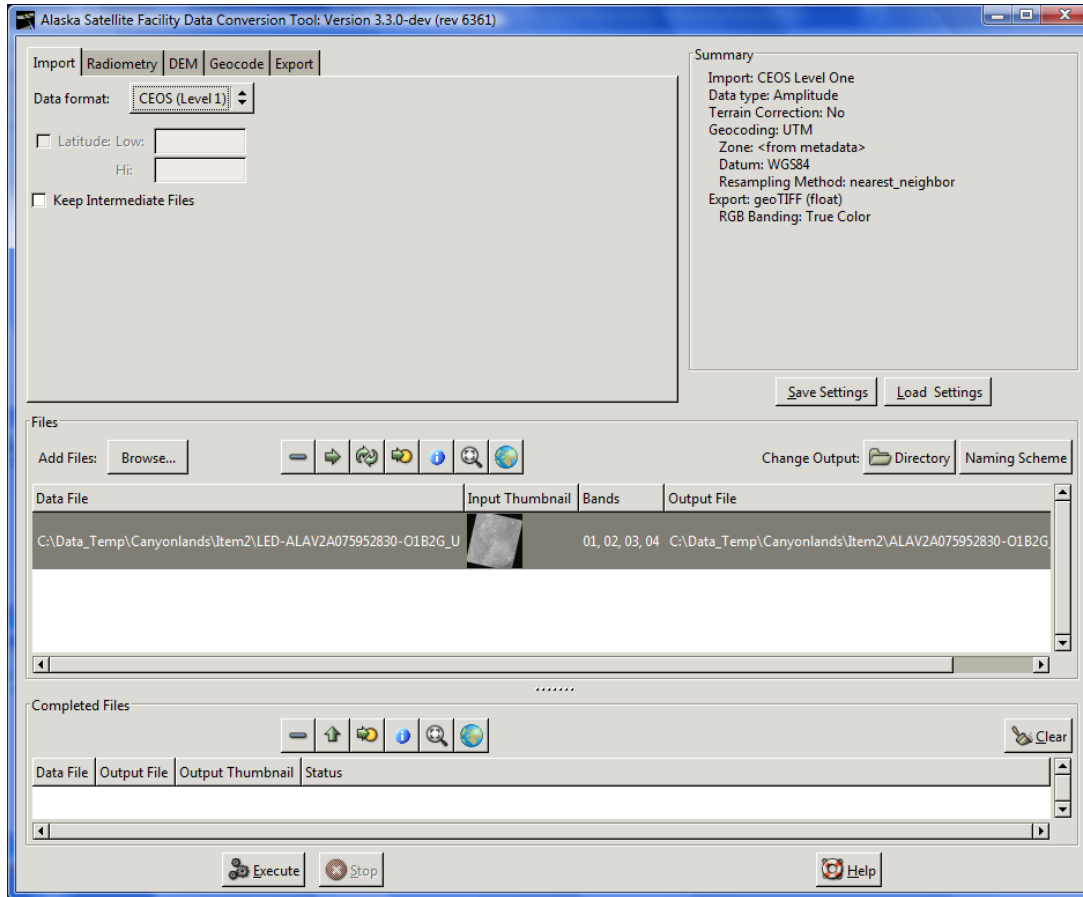
Item	Status	Granule	Processing Type	Processing Option	Media Type
Download Data 1	DELIVERED DEC-28-2006	ALAV2A041552320	L1B2	GEOCODED_MAP_PROJECTION_UTM	FTP
Download Data 2	DELIVERED DEC-28-2006	ALAV2A041552330	L1B2	GEOCODED_MAP_PROJECTION_UTM	FTP
Download Data 3	DELIVERED DEC-28-2006	ALAV2A041552300	L1B2	GEOCODED_MAP_PROJECTION_UTM	FTP
Download Data 4	DELIVERED DEC-28-2006	ALAV2A041552310	L1B2	GEOCODED_MAP_PROJECTION_UTM	FTP

Order ID	Date	Planning	Processing	Problem	Delivery	Done
Order A664 (2 items)	DEC-28-2006	0	0	0	0	2
Order A665 (3 items)	DEC-28-2006	0	0	0	0	3
Order A666 (5 items)	DEC-29-2006	0	0	0	0	5





ASF Convert



- Available free from ASF website
- Allows ingest of all ALOS data
- Terrain correction for PALSAR
- Conversion to a variety of formats
- Geocoding of imagery
- Generation of true-color, false-color and user defined multiband images
- User feedback has been very positive

(<http://www.asf.alaska.edu/softwaretools>)





Summary



- Thank you to all for attending and participating in this symposium
- AADN is available to serve the needs of all users in North and South America
- We look forward to working with users in the future to help them meet their research needs
- Visit our website at <http://www.asf.alaska.edu> or <http://aadn.alaska.edu> for more information on ASF, AADN and the tools and services we offer

