

ALOS Satellite Status

Contents

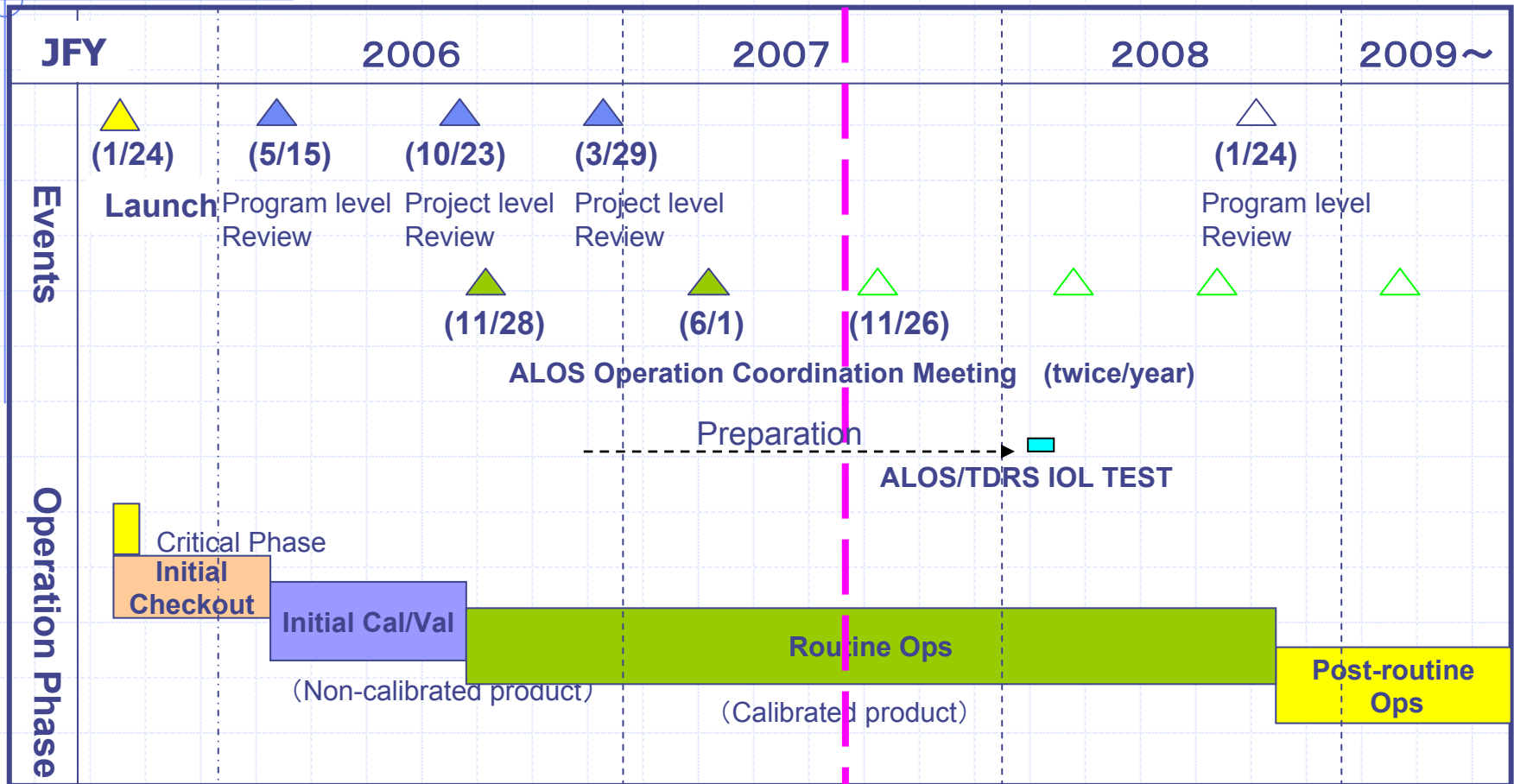
ALOS Operation Master Schedule

ALOS Satellite status

Haruyuki Ishida (ishida.haruyuki@jaxa.jp)
Satellite Operations Engineering Dept.,
Office of Space Applications

ALOS Science Program in Kyoto
@November 19-23, 2007
Kyoto International Conferene Center

ALOS Operation Master Schedule



2006/1/24 : ALOS was launched

**2006/1/28 : Critical phase completed
Successful deployments &
normal control**

**2006/5/15 : Initial check-out phase
completed & commissioned**

First images : Mt. Fuji, Tanegashima

2006/10/23: Cal/val phase completed.

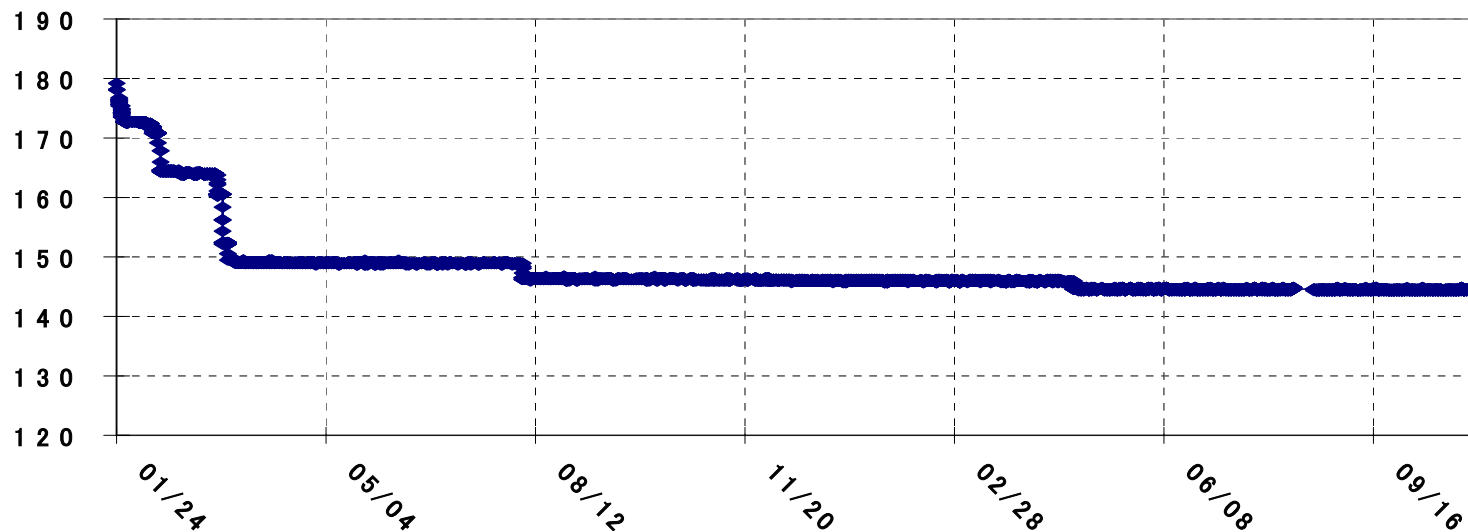
Normal observation phase started

ALOS Operation Coordination Meeting(twice/year)

The basic observation plan is defined to maximize the use of ALOS observation data at the meeting.

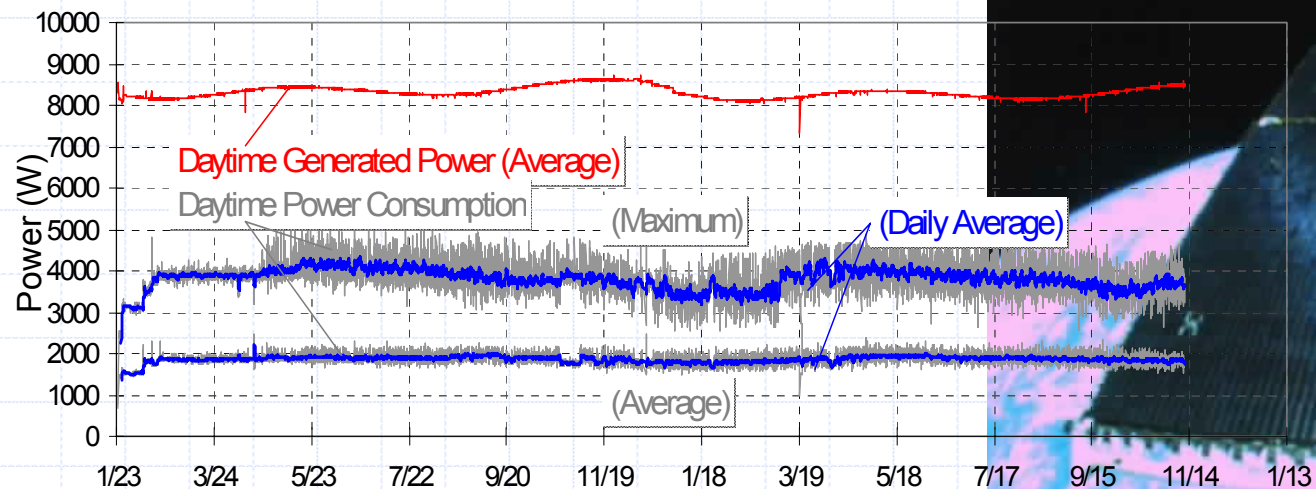


- **The satellite bus subsystems and the three mission instruments are in good health.**
- **Telemetry, Tracking & Command : good**
 - ◆ Direct USB & inter-satellite SSA communications.
- **Attitude and Orbit control: good**
 - ◆ All functions & mode transitions operate well.
- **Mission Data Handling (MDHS): good**
 - ◆ The X-band direct & inter-satellite KSA transmissions are fine.
- **Current amount of propellant: about 144kg.**

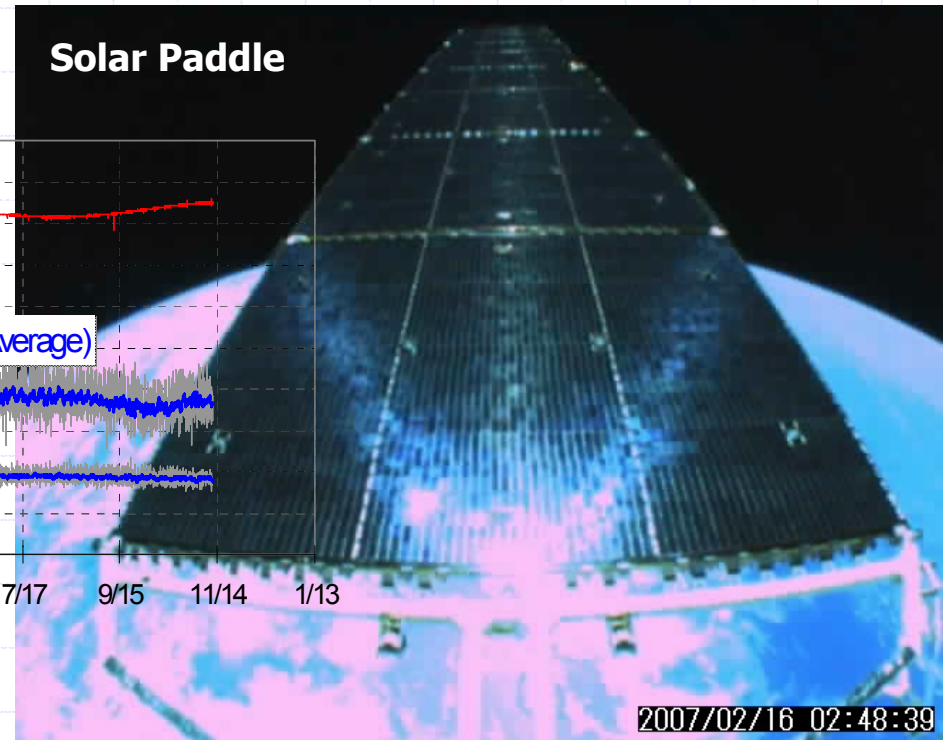


➤ Power Management (Paddle & Electric Power System): good

- ◆ Average power generation : about 8.5Kw (>7Kw)
- ◆ Power consumption : about 5Kwmax
- ◆ Battery characteristic (C/D ratio, DOD, charge voltage): stable

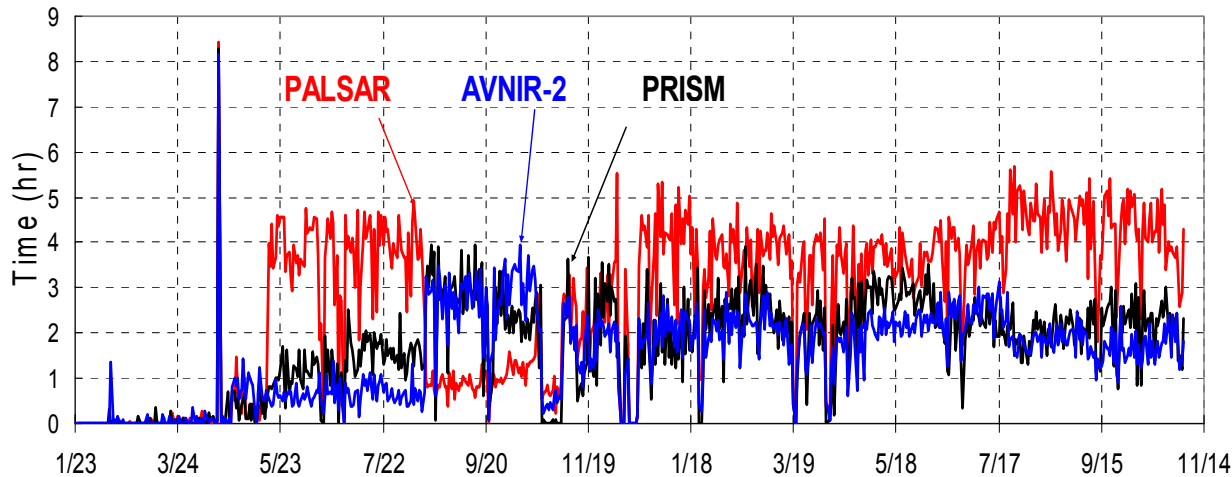


Solar Paddle



- **PRISM, AVNIR-2, PALSAR: good**
 - ◆ Daily duty of 3 sensors operations
- **So far, ALOS has delivered a lot of high resolution images.**
 - ◆ Observation Result during Ops Period.
(May.16, 2006 – Oct. 22, 2007)(14cycles)

PRISM:	740,048 scenes
AVNIR-2:	324,494 scenes
PALSAR:	545,833 scenes



19 Nov. 2007

