

Anomalies in the GeoTIFF format of ALOS-2 products

Note:

Please note that some anomalies have been found in the GeoTIFF format of the ALOS-2 products. Please refer to the following three events.

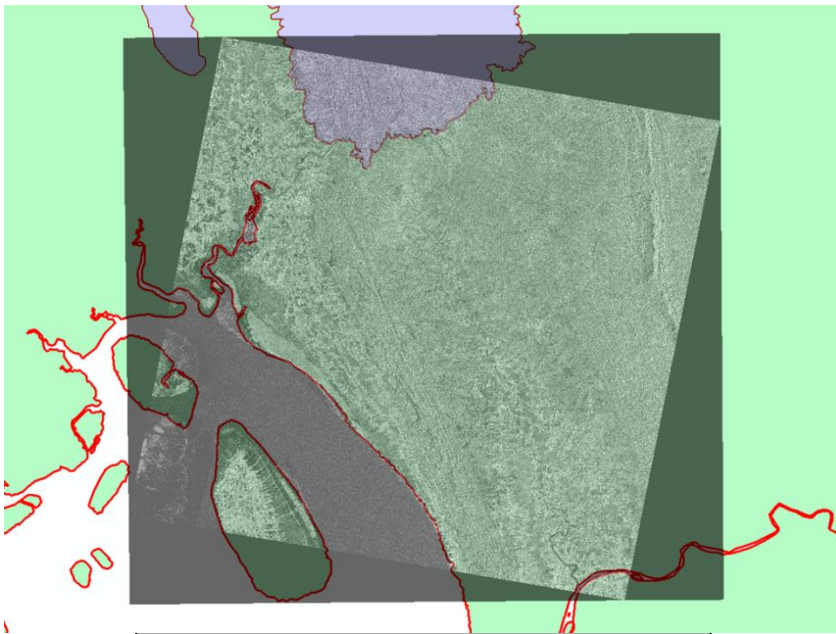
These problems are expected to be improved in March, 2016. We recommend that you do not order such products until its improvement.

We sincerely apologize for any inconvenience this may have caused you.

Thank you for your patience.

1. Geo-reference image orientation

If you overlay the images (GeoTIFF format and Geo-reference image orientation) on the map with image display software, the imagery will be overlaid out of alignment with the map due to failure of image rotation accordingly.



GeoTIFF UTM GeoCode

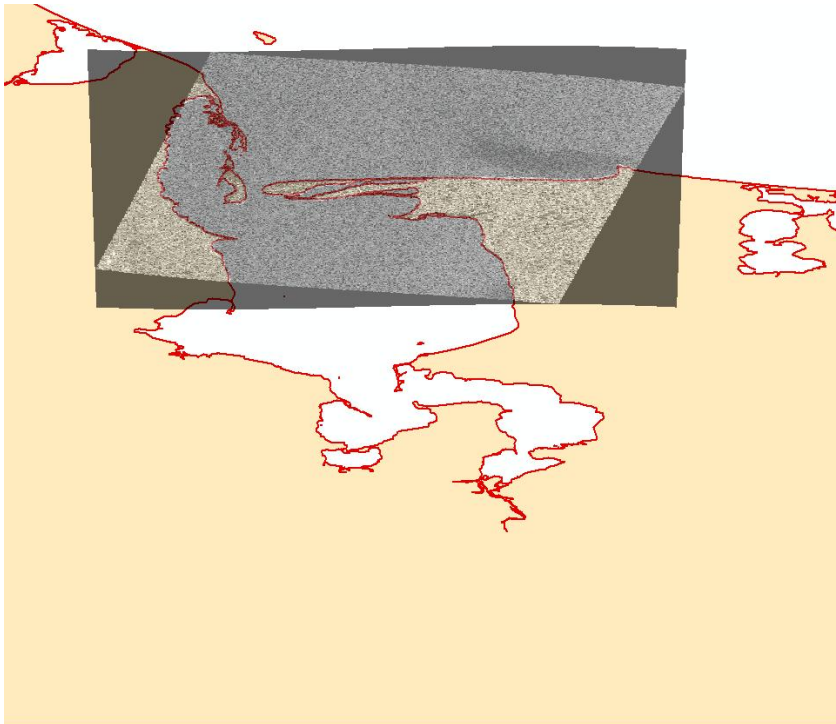


GeoTIFF UTM GeoReference

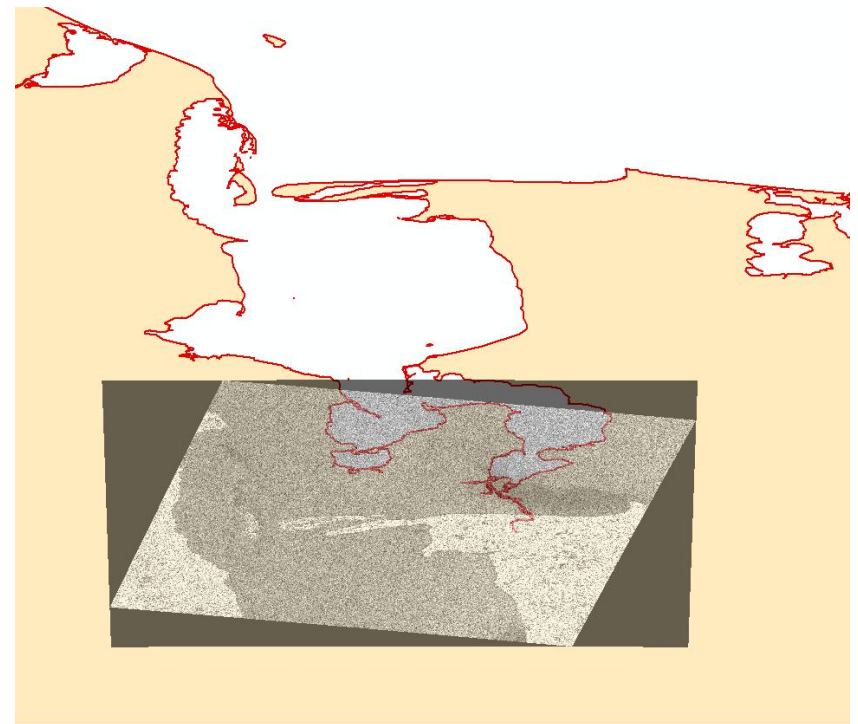
(Examples) Observation Area : Bangladesh

2. "Polar Stereo" products

If you overlay the images (GeoTIFF format and map projection system "Polar Stereo") on the map with image display software, the imagery will be overlaid out of alignment with the map towards the equator due to failure of image coordination accordingly.



CEOS PS GeoCode



GeoTIFF PS GeoCode

(Examples) Observation Area : Russia Far East

3. ModelTiepointTag of GeoTIFF format in the product format description for PALSAR-2 L1.1/1.5/2.1/3.1

The data of “ModelTiepointTag” should be stored in longitude, latitude order as defined in the format description, however, the data is actually stored in latitude, longitude order.