



# ALOS Scientific and Utilization Research Promotion Program

Ryosuke SHIBASAKI  
NASDA, CSIS-UTYO



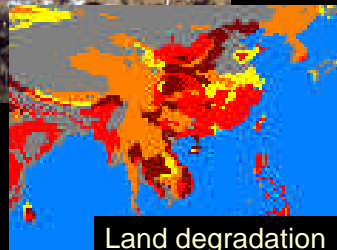
## Global environmental issues

- Think globally, Act locally

deforestation



Over grazing and over cultivation



Land degradation

Sustainable development?

(soil degradation map from UNEP)

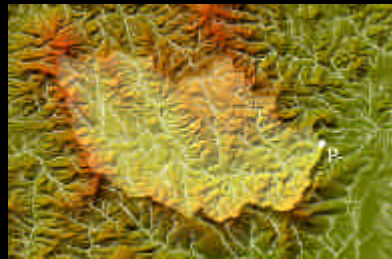
## Growing needs for GIS data for supporting sustainable development

- DEM (Digital Elevation Model)
  - 10m resolution or so.
- Land cover/ Land use, Vegetation etc.

↗ Soil conservation



↗ Water resource management



## Promoting research and development

- Establish links from raw data to applications
  - Calibration/validation
  - Mass data handling and distribution
  - Scientific/business uses of ALOS data
- Need to promote *diversified* research efforts
  - Not only for “science” but for “**business**”
    - Create market for ALOS data
    - Stimulate R&D activities in private sectors

## (Expected) Major research fields

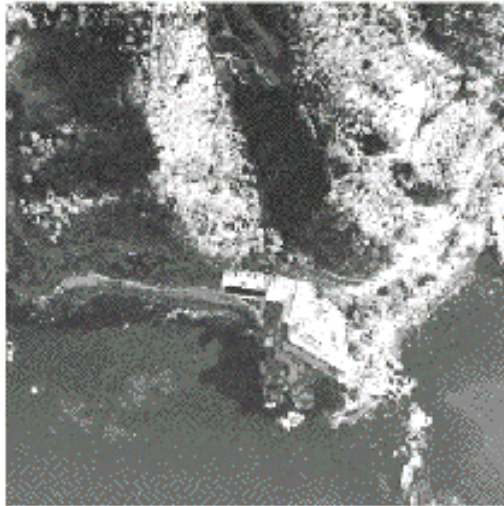
- Calibration and Validation of Each Sensor and Related Basic Studies
- Land Use and Land Cover Change
- Topography and Geology
- Terrestrial (Vegetation) Ecosystem , Agriculture and Forestry
- Climatic System, Hydrological Processes, and Water Resources
- Oceanography and Coastal Zone Related Research
- Disaster monitoring
- Resource Exploration
- Basic Studies on;
  - scattering and Interferometric characteristics
  - development of higher resolution optical sensors
  - very large size data handling

### High resolution DEM generation without using GCP

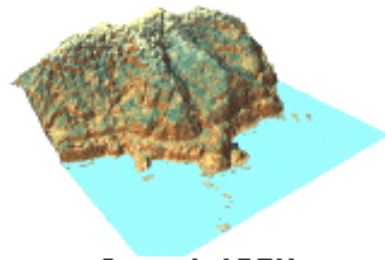
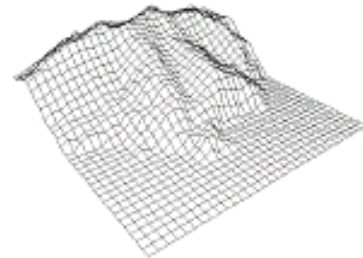


(10 to 20m grid spacing and z less than 5m)

## Preliminary Simulation Results

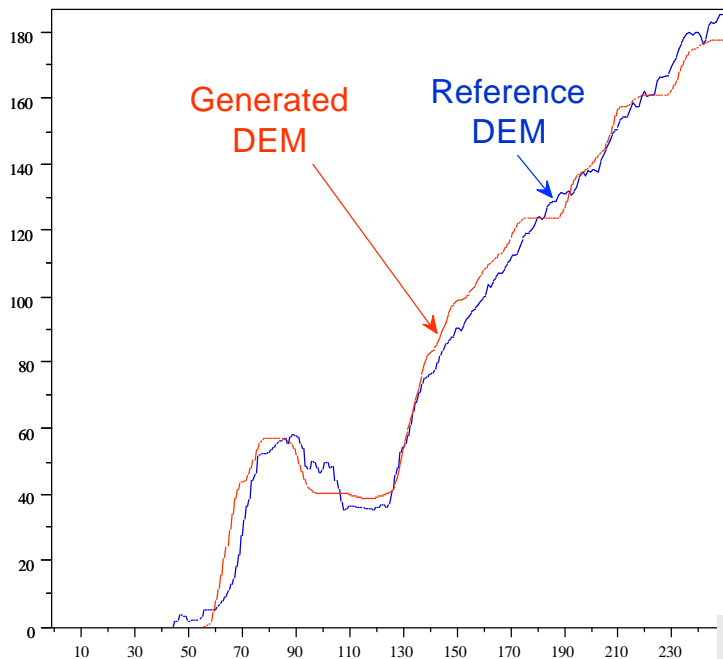


Simulated image of nadir-looking

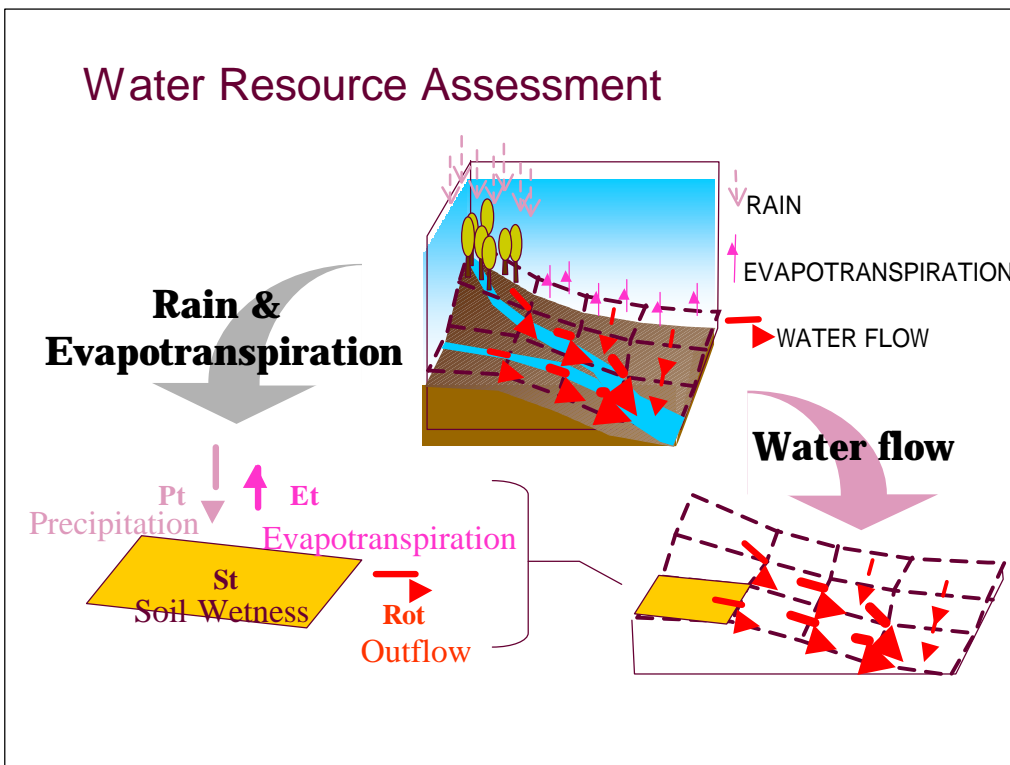
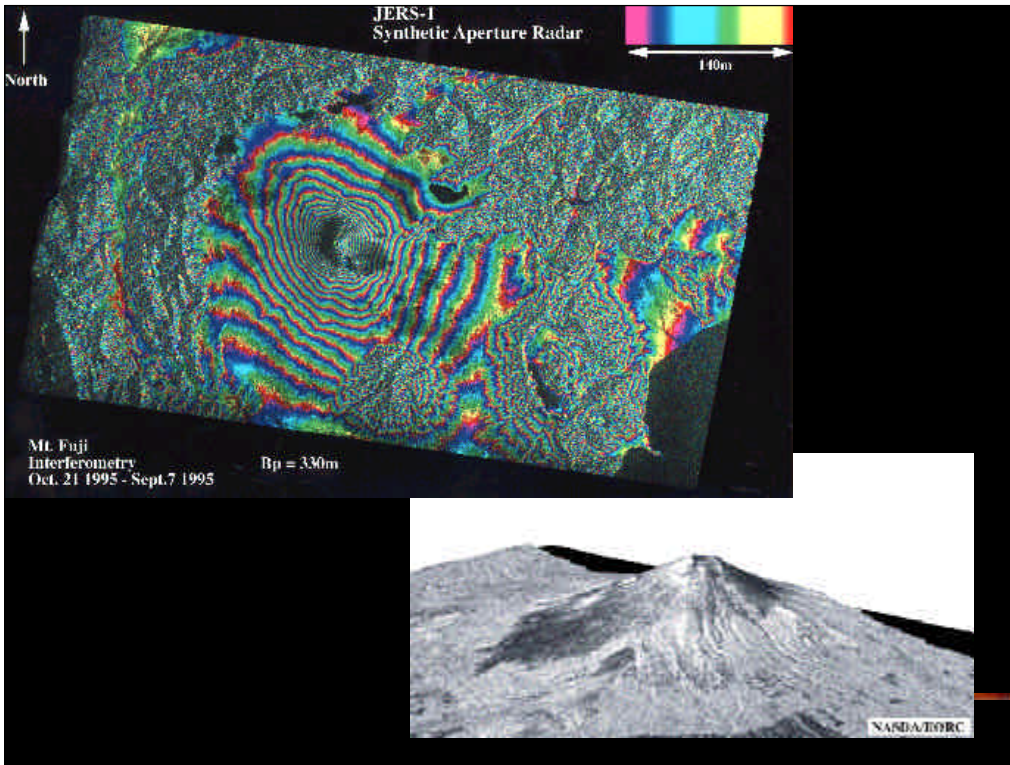


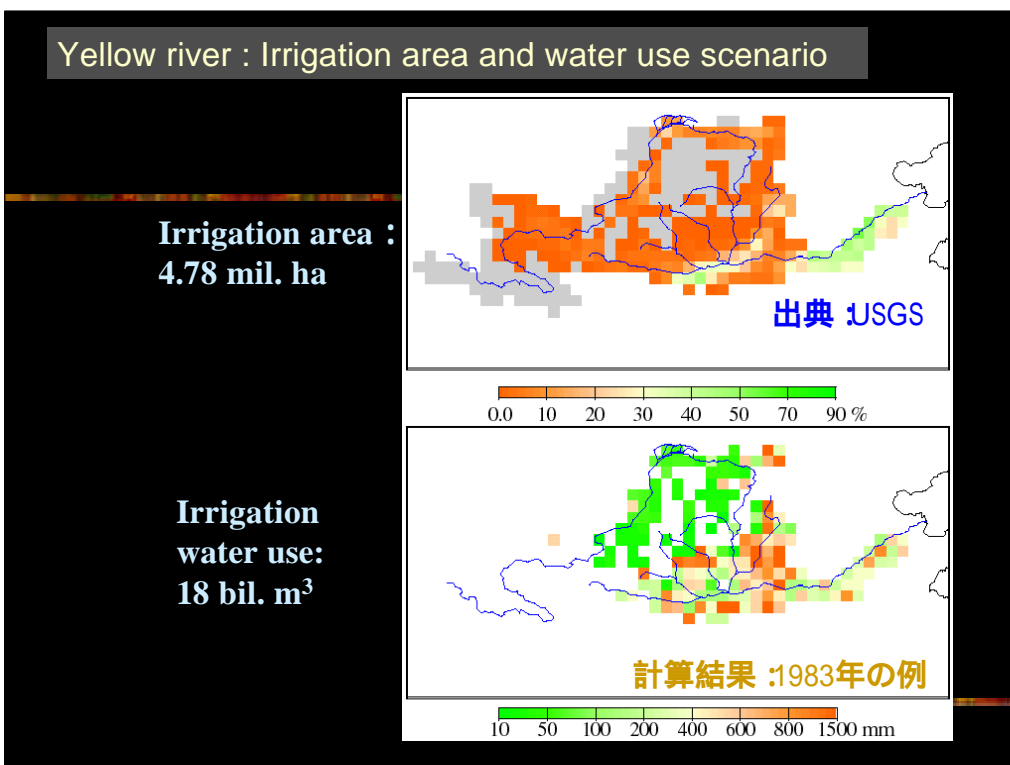
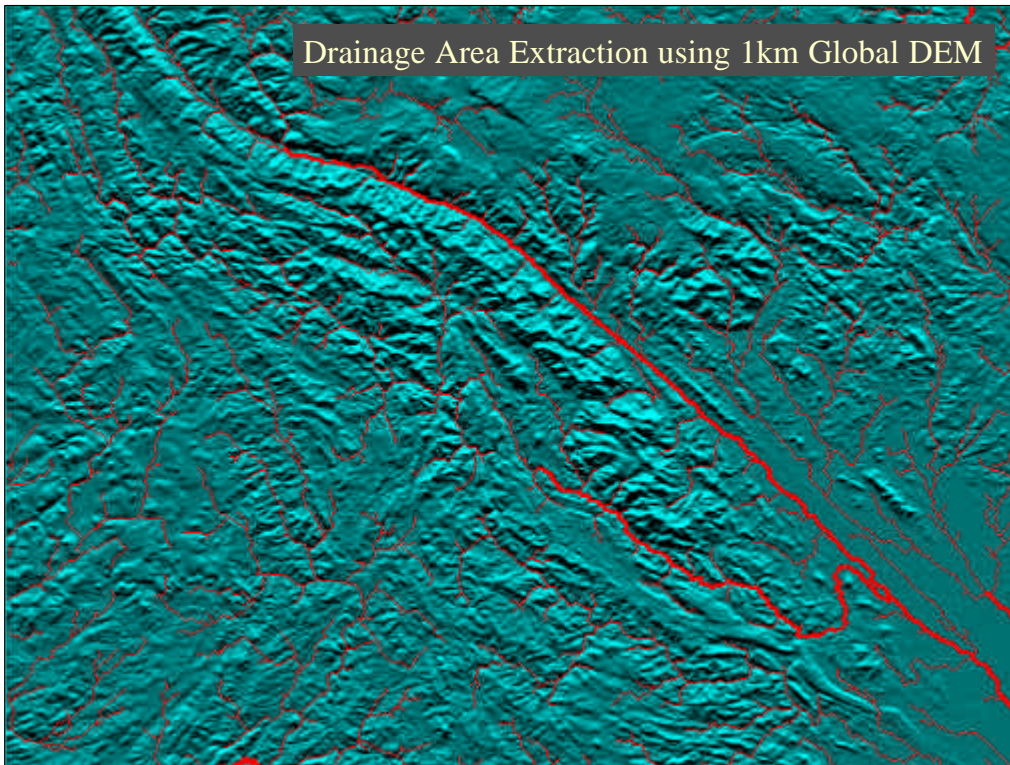
Generated DEM

## Elevation Errors

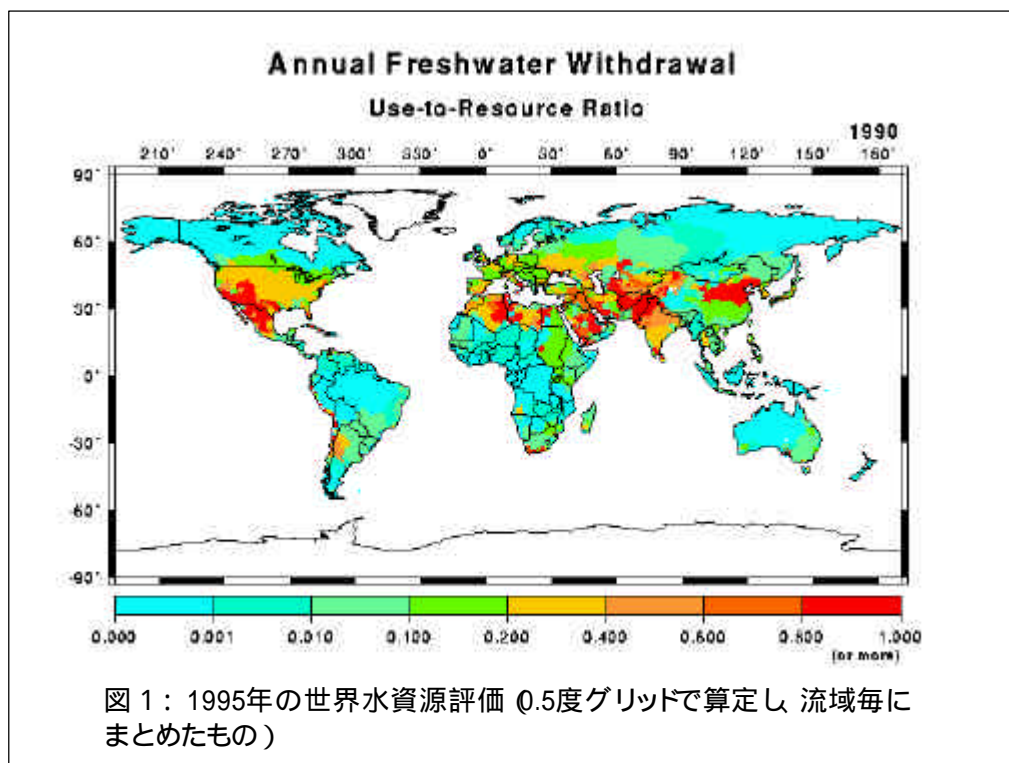
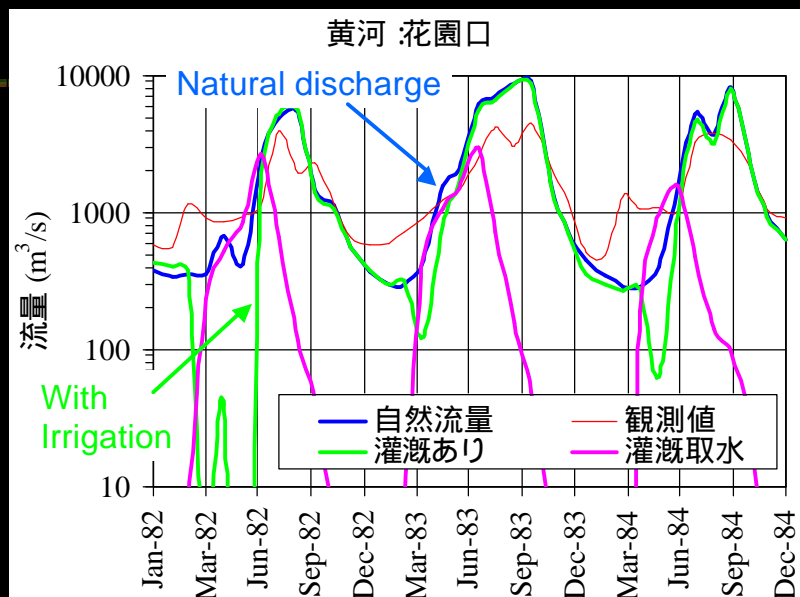


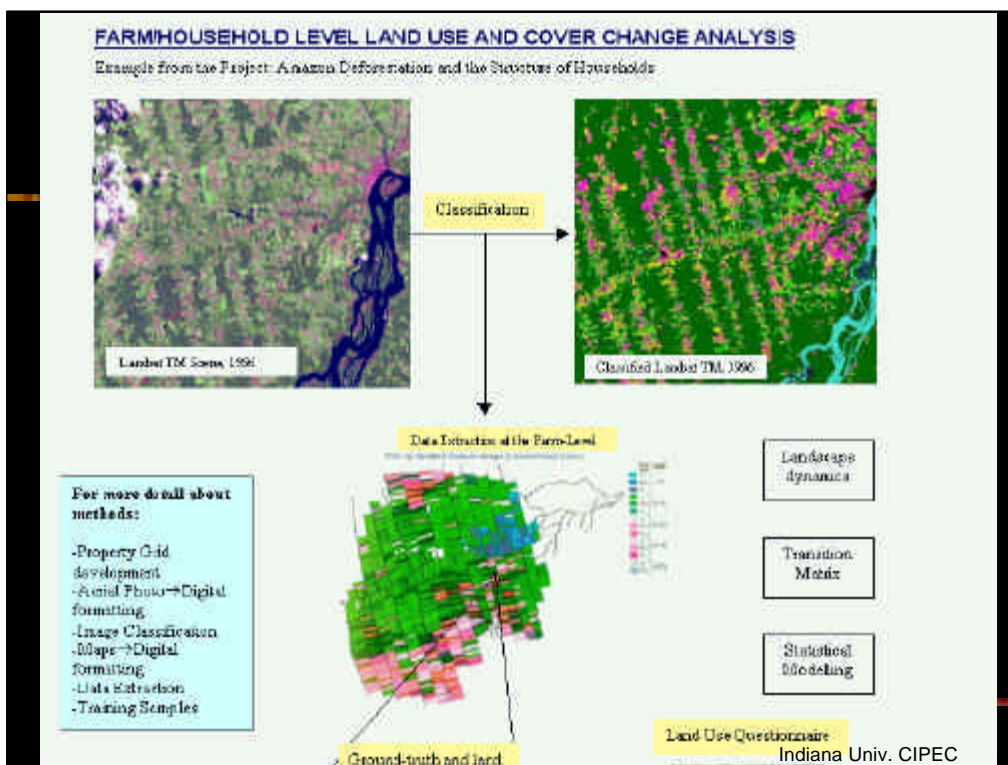
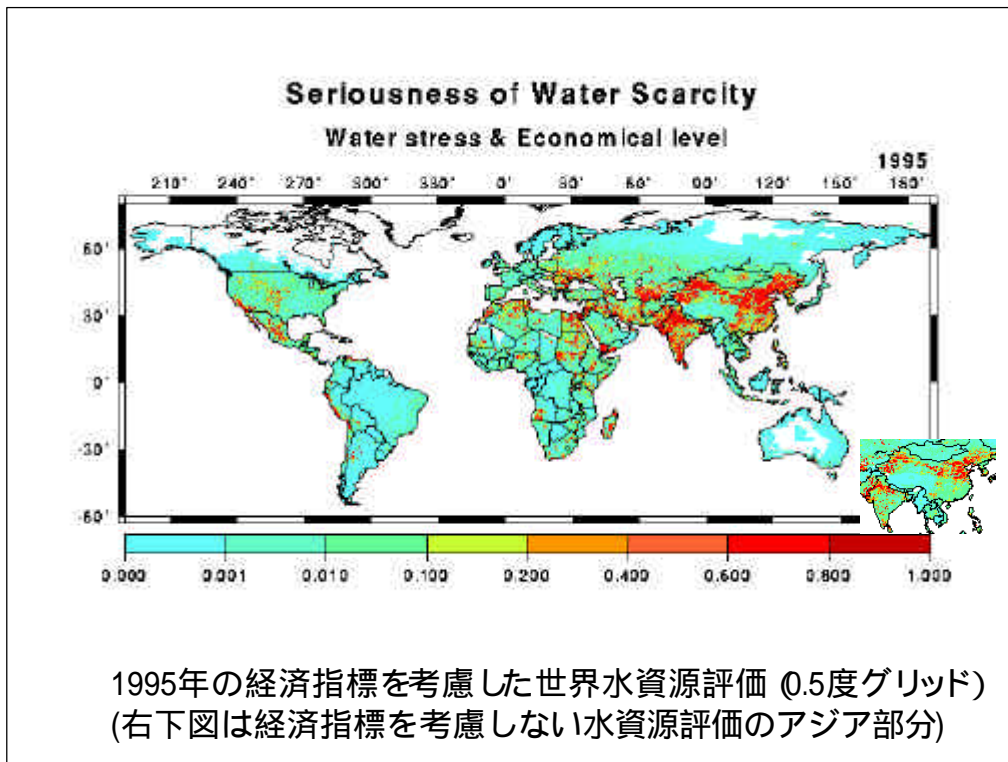
Unit: meter



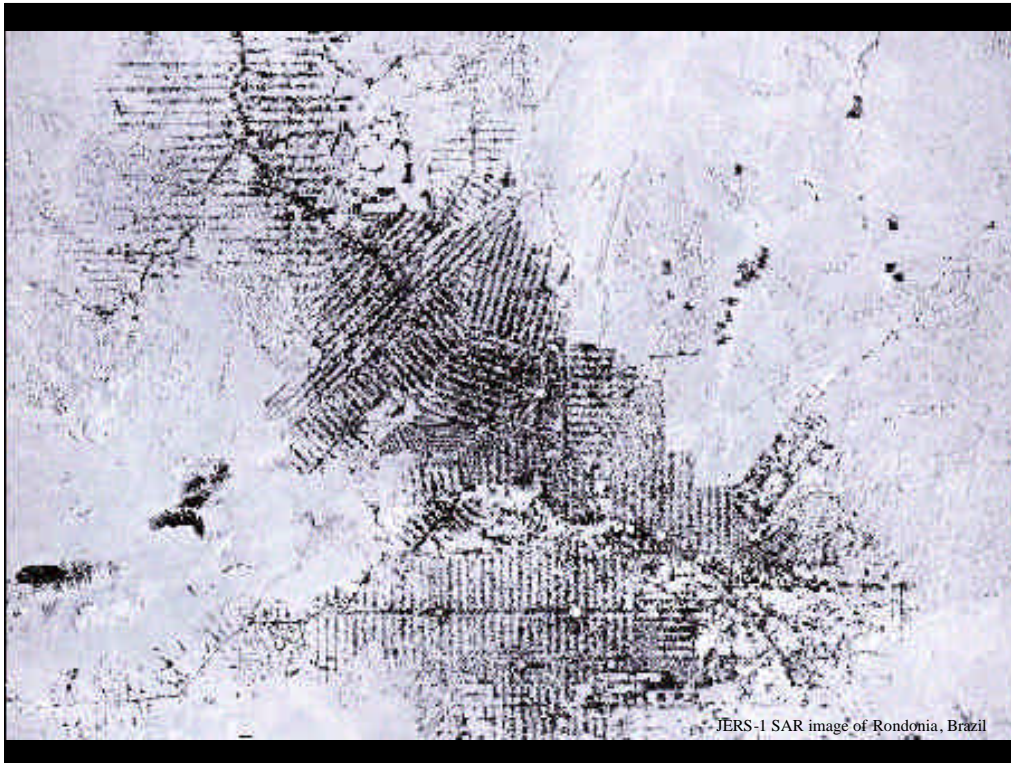


## Irrigation impact on river water discharge





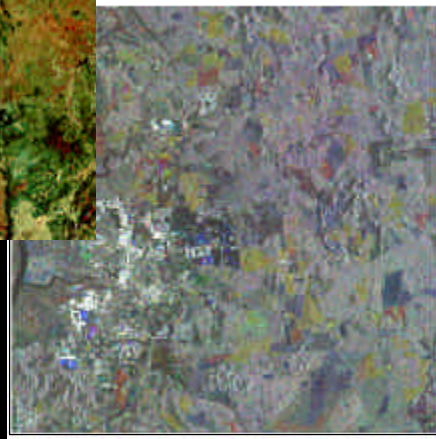




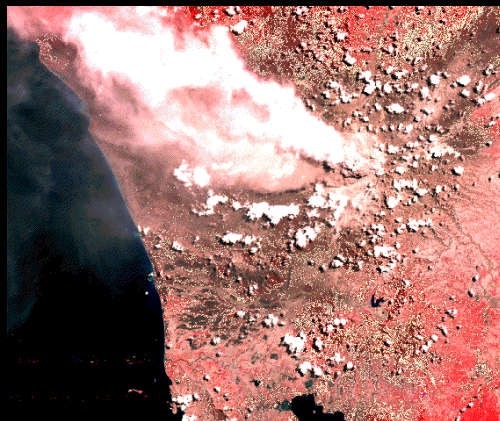
## Simultaneous observation of SAR and optical sensors



LAI (NDVI) + Biomass  
+ Time-series observation

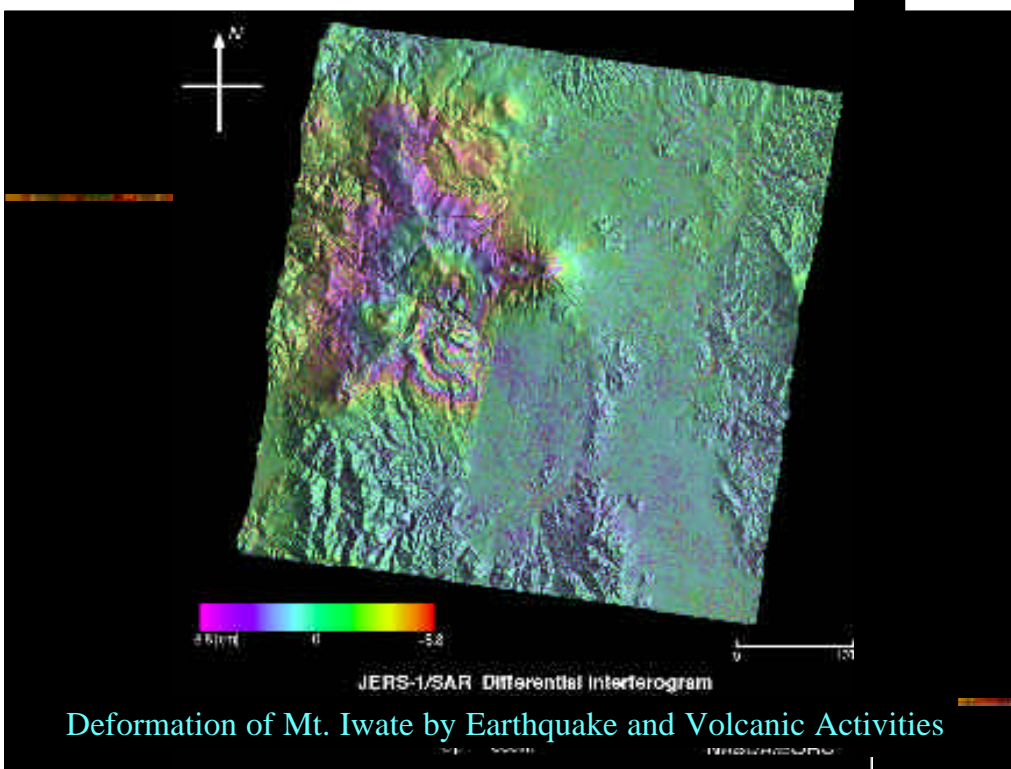
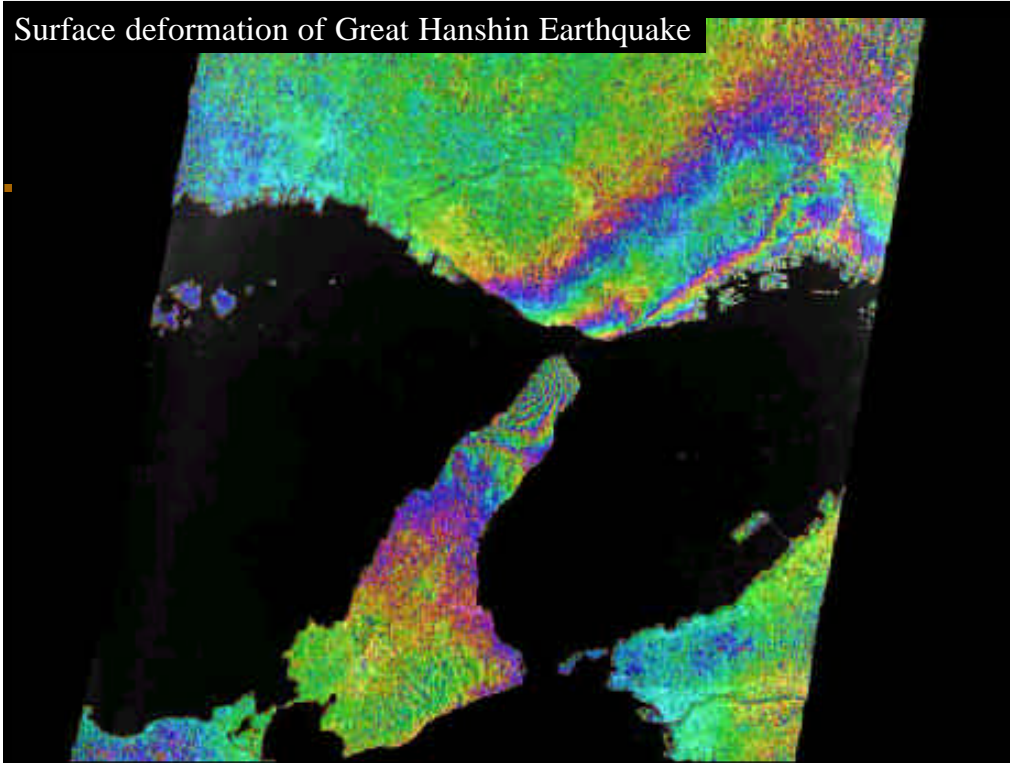


## Hazard Monitoring



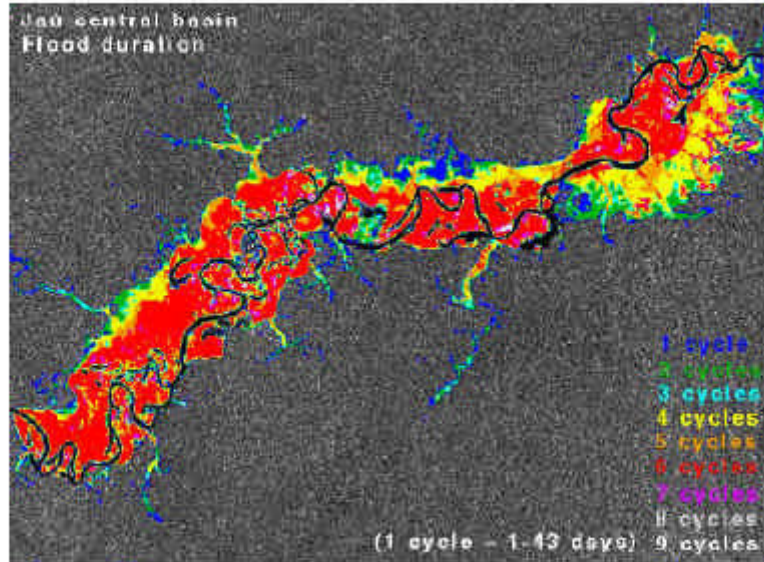
Eruption of Mt. Pinatubo (1991, MESSR resolution = 70m)

Surface deformation of Great Hanshin Earthquake



Deformation of Mt. Iwate by Earthquake and Volcanic Activities

### Annual variation of forest inundation in the Jau River, Amazon, Brazil



## “Core” data products

- Global high-resolution DEM and ortho-image (PRISM, AVNIR-2, and PALSAR):
  - Exploring possibility of establishing “Global DEM consortium” on voluntary basis
- Global biomass density dataset (PALSAR and AVNIR-2):
- Land surface deformation dataset (Earthquake-prone areas only):
- Algorithm development and data production by EORC with collaboration with other research organizations.

## Strategies for research promotion

---

- Distributing data for research
    - Simulated image data, Raw image data + basic software
    - Derived “core” datasets
  - Research announcement
    - Recruiting core scientists
  - Promoting to form user forum or community
    - Hazard monitoring, DEM, Vegetation monitoring etc.
  - Joint research programs with NASDA
    - For larger-scale experiments for operational uses
  - Basic research by EORC
    - For the core data products
    - For calibration/validation
  - Collaboration with the “Data Node” organizations
- 

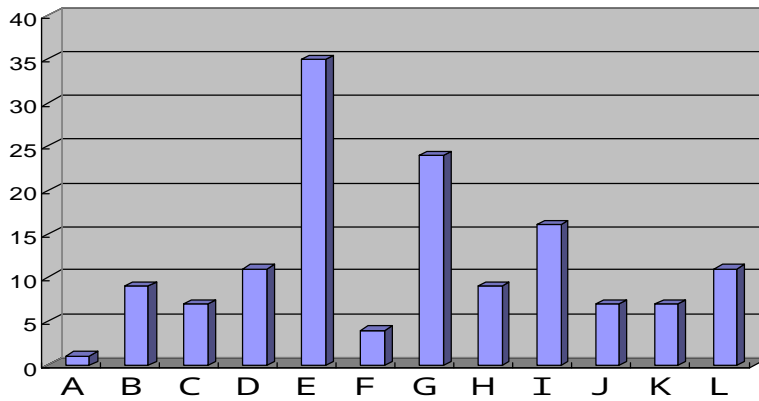
## 1<sup>st</sup>. Research Announcement

---

- Submission due: Feb.2000
  - More than 200 applications.
  - Diversified research fields
    - But, mainly from public research organizations/universities
  - Approximately 150 proposals are accepted.
-

# 1<sup>st</sup>.Research Announcement

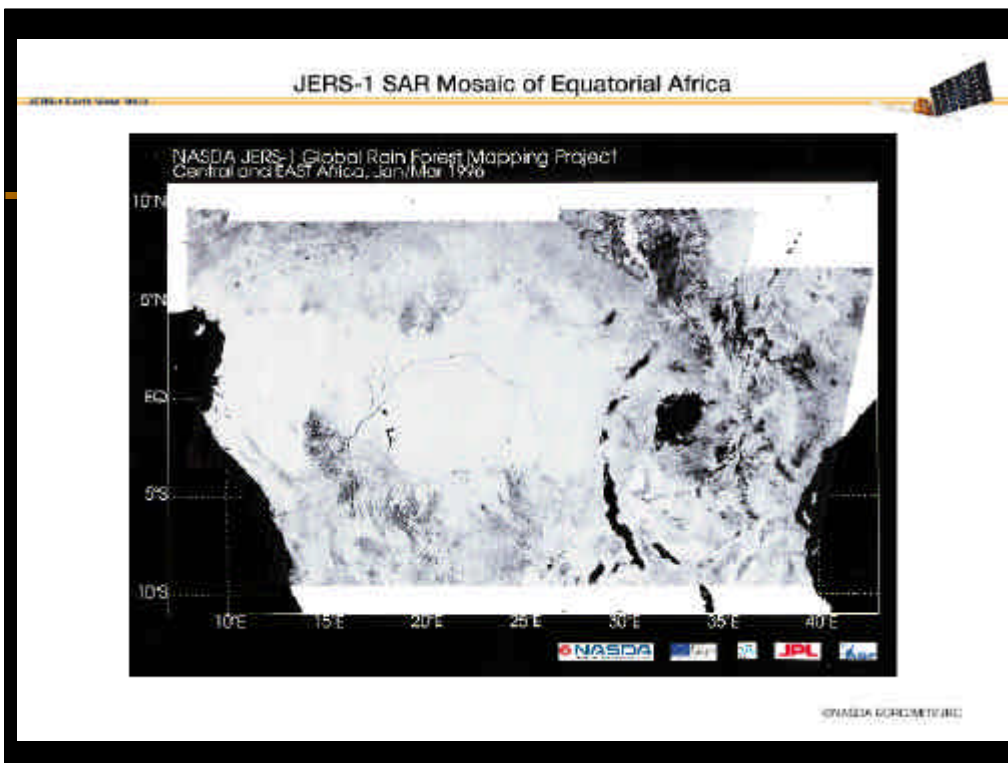
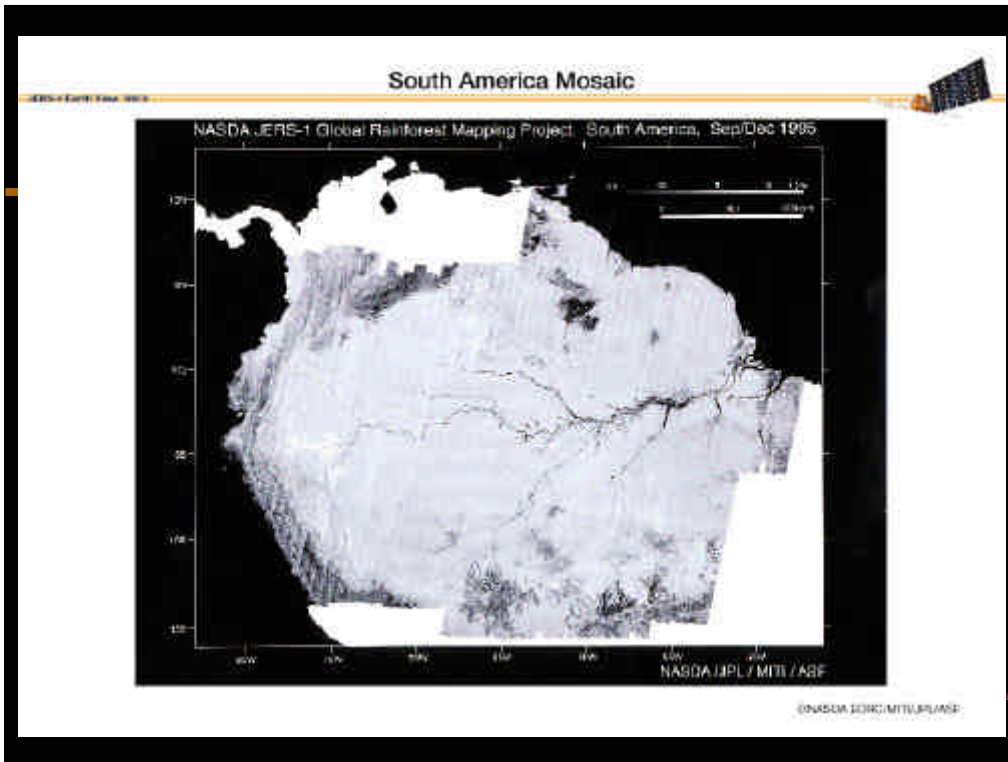
PI numbers by the field



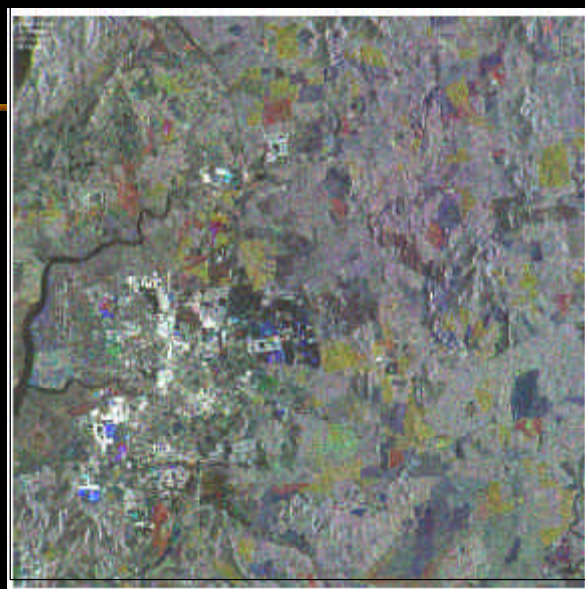
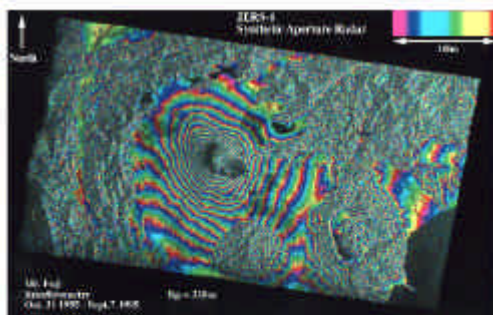
- A: Calibration of optical Sensors      F: Geology & Non renewable Resources      J : Agricultural Applications  
B: Calibration of SAR                      G: Terrestrial    K : Hydrology & Water Resources  
C: DEM & Mapping                              H: Oceanography & Coastal Zone      L: Geography & GIS Applications  
D: Land use & Land Cover                      Applications  
E: Disaster Management                              I: Cryosphere Snow and Ice Distribution



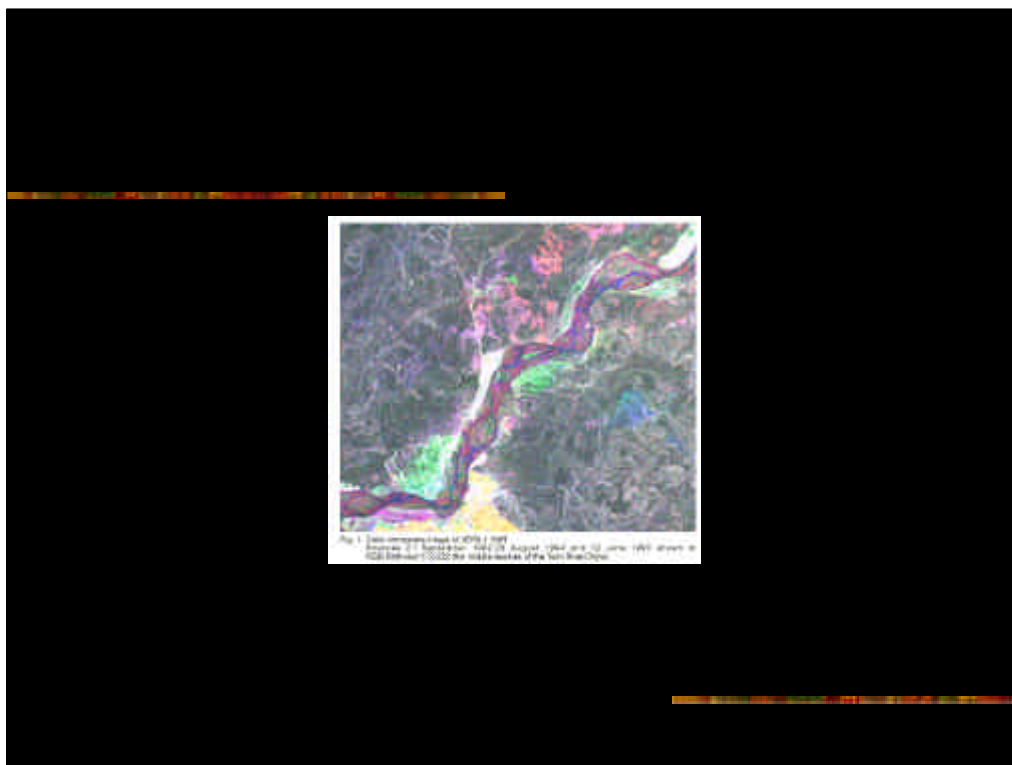
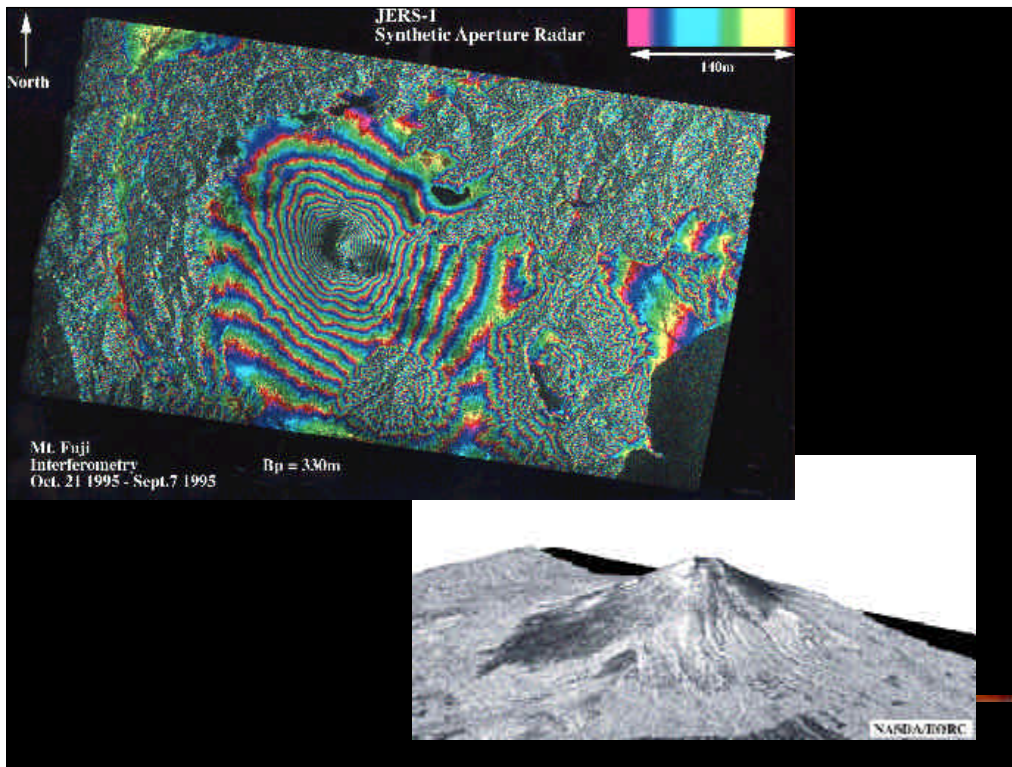
END

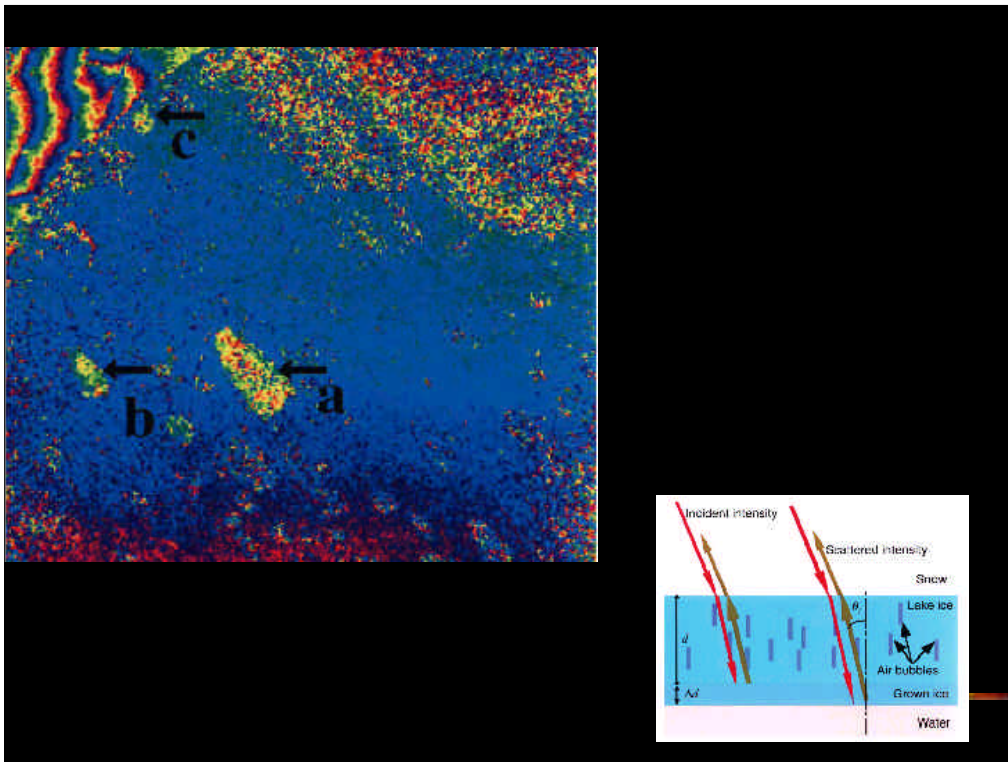


合成開口レーダの干渉処理による富士山 DEM





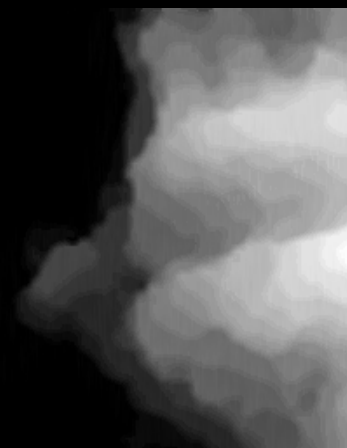




## Simulated PRISM image and derived DEM



Simulation image of PRISM  
(nadir, 2.5m resolution)



DEM generated from  
simulation images

Change Detection of the Mt. Iwate and Shizukuishi

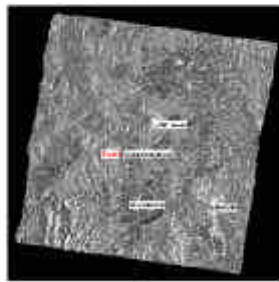
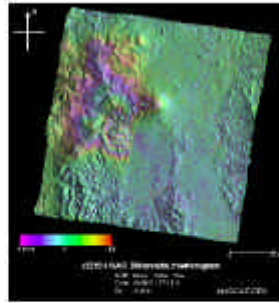


IMAGE GURU

Hyogo-Ken-Nanbu Earthquake(Differential Interferogram)

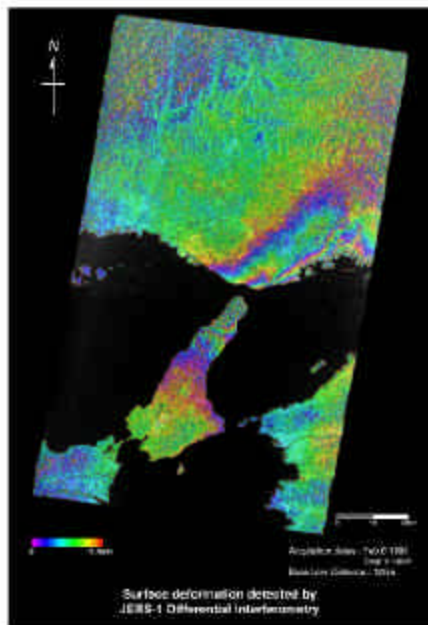


IMAGE GURU