

# **Earth Observation Data Viewer (Version 2.3)**

## **Install Manual**

**Japan Aerospace Exploration Agency (JAXA)**

## Revision history

<b>Rev.</b>	<b>Date</b>	<b>Chapter</b>	<b>Descriptions</b>
Version 1.0	Mar. 31. 2006	All	First Release
Version 1.1	Mar. 14. 2007	All pages	The expression and the contents of explanation were revised.
Version 2.0	Mar. 2008	All pages	The contents of explanation were revised.
Version 2.1	Mar. 2009	All pages	Error in writing was revised.
Version 2.2	Feb. 2010	p5, 6	The directory structure was revised.
Version 2.3	Aug. 2011	Title	Update of version information.

# Earth Observation Data Viewer Install Manual

## Contents

1. Introduction .....	1
2. Environment .....	1
3. Installation .....	2
[Procedure 1.] Execute the installer .....	2
[Procedure 2.] Select Installation Folder .....	3
[Procedure 3.] Confirmation .....	4
[Procedure 4.] Completion of the installation .....	4
4. Directory Structure .....	5

# 1. Introduction

This document describes the procedure for installing the Earth Observation Data Viewer.

# 2. Environment

The required environment for the Earth Observation Data Viewer is shown in the Table 2-1. The required disk capacity for saving AMSR/AMSR-E/GLI/TRMM (PR/TMI/VIRS/combined) products is not included in the table.

Table 2-1 Machine Environment

Items	Conditions
Processor	PentiumII CPU or more
Operating System	Windows2000,XP
RAM	512MB or more
Hard Disk capacity	100MB or more (except the capacity of the AMSR/AMSR-E , GLI and TRMM products)
Display Unit	1024 pixels by 768 lines, High Color (24 bits mode) or more
Others	Mouse or Pointing device PDF Viewer and Web Browser

The Earth Observation Data Viewer reads and stores the various data (observation data, latitude and longitude, etc.) from the HDF file into your computer's memory. If you use this software to display the large data, please install this software into the appropriate PC which has enough memory. The memory usage of this software is shown in Figure 2-1.

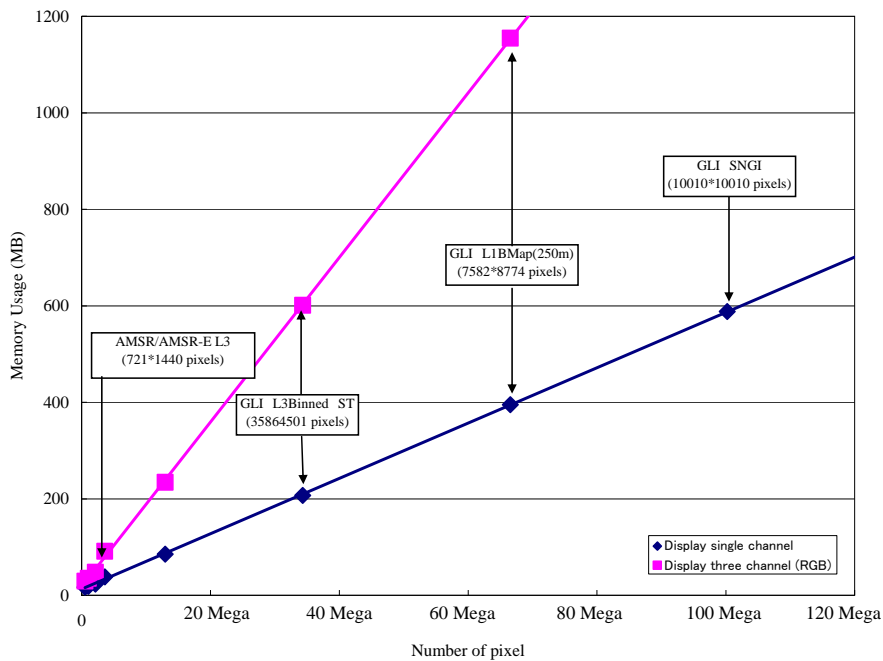


Figure 2-1 Memory usage of viewer to display HDF data

### 3. Installation

Download the installer program of the “Earth Observation Data Viewer” from JAXA/EOC web site. And expand it.

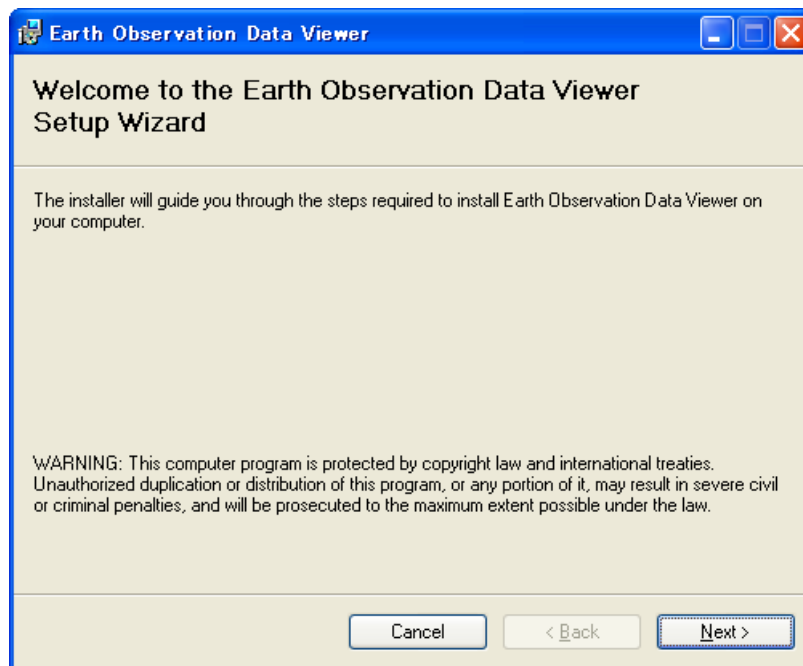
#### Preparing. Remove another version of Earth Observation Data Viewer

Remove other version of Earth Observation Data Viewer, when you have installed it. Use the following steps to remove Earth Observation Data Viewer.

- (1) Quit Earth Observation Data Viewer.
- (2) On the [Start] menu, click [Control Panel].
- (3) In Control Panel, open [Add or Remove Programs].
- (4) Select [Earth Observation Data Viewer] from the list of currently installed programs, then click Remove.
- (5) When asked if you would like to remove Earth Observation Data Viewer, select [Yes].
- (6) Wait to finish the progress.

#### [Procedure 1.] Execute the installer

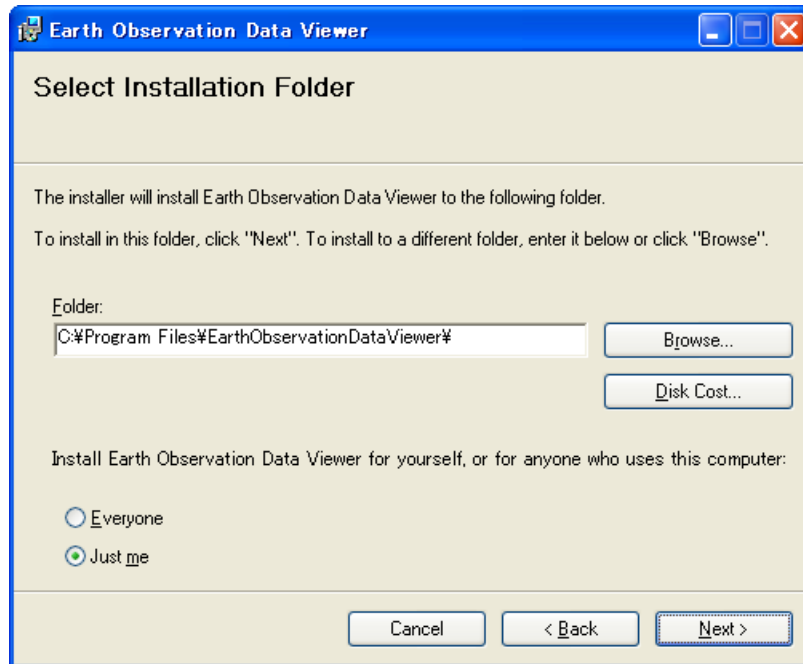
Double-click the installer program named “Setup.exe”; the following Setup Wizard will be displayed.



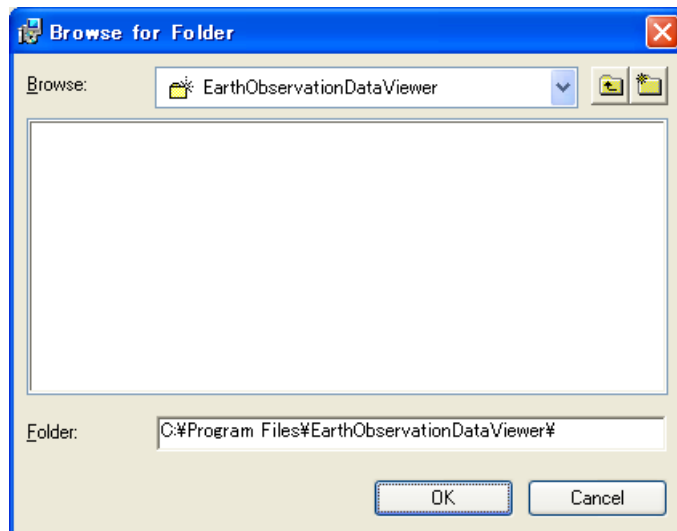
Click the [Next] button, if you want to continue this installer.

**[Procedure 2.] Select Installation Folder**

Select the installation folder for this software. The default folder for this installation is “c:\Program Files\EarthObservationDataViewer”.

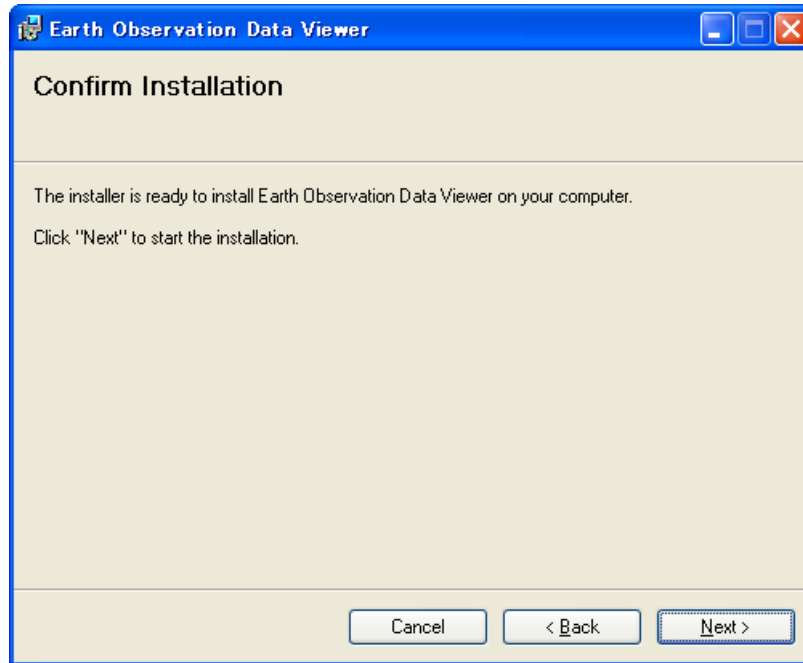


If you want to change the folder, click the **[Browse]** button. The following dialog will be displayed. Then you can change the installation folder, select other existing folder or create the new folder. And click the **[OK]** button after specifying the installation folder.



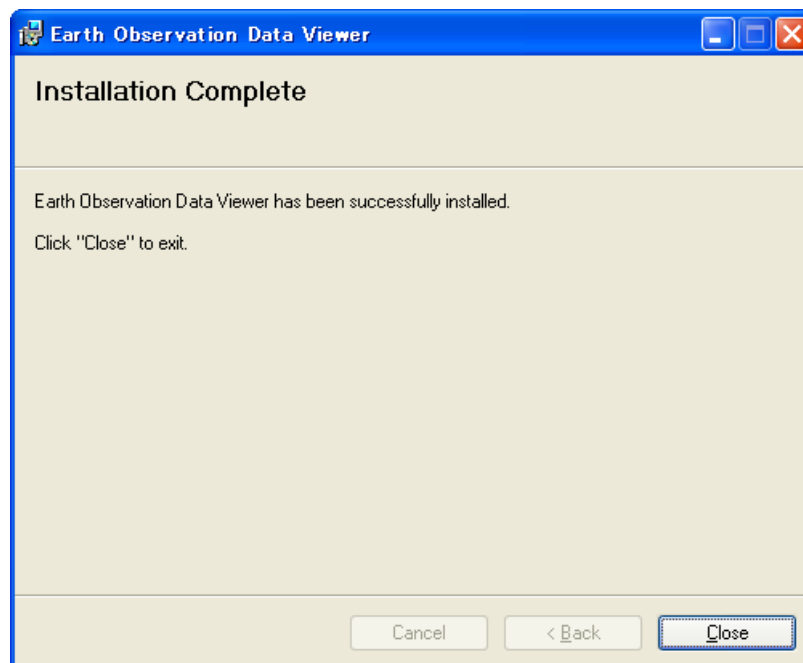
**[Procedure 3.] Confirmation**

Click the **[Next]** button, if you want to continue this installation. Then the installation process is activated. Click the **[Back]** button, if you want to change the installation folder. If you want to discontinue the installation of this software, click the **[Cancel]** button.



**[Procedure 4.] Completion of the installation**

If the installation is successfully accomplished, the following dialog will be displayed. And please click the **[Close]** button to terminate the installation process.



After installation finished, click **[Earth Observation Data Viewer]** on the program menu of windows to confirm your installation.

## 4. Directory Structure

The directory structure of the default installation is shown in figure 4-1. If you change the installation directory while the installation, the directory shall be replaced with your specified folder. The explanation of directory structure is shown in Table 4-1.

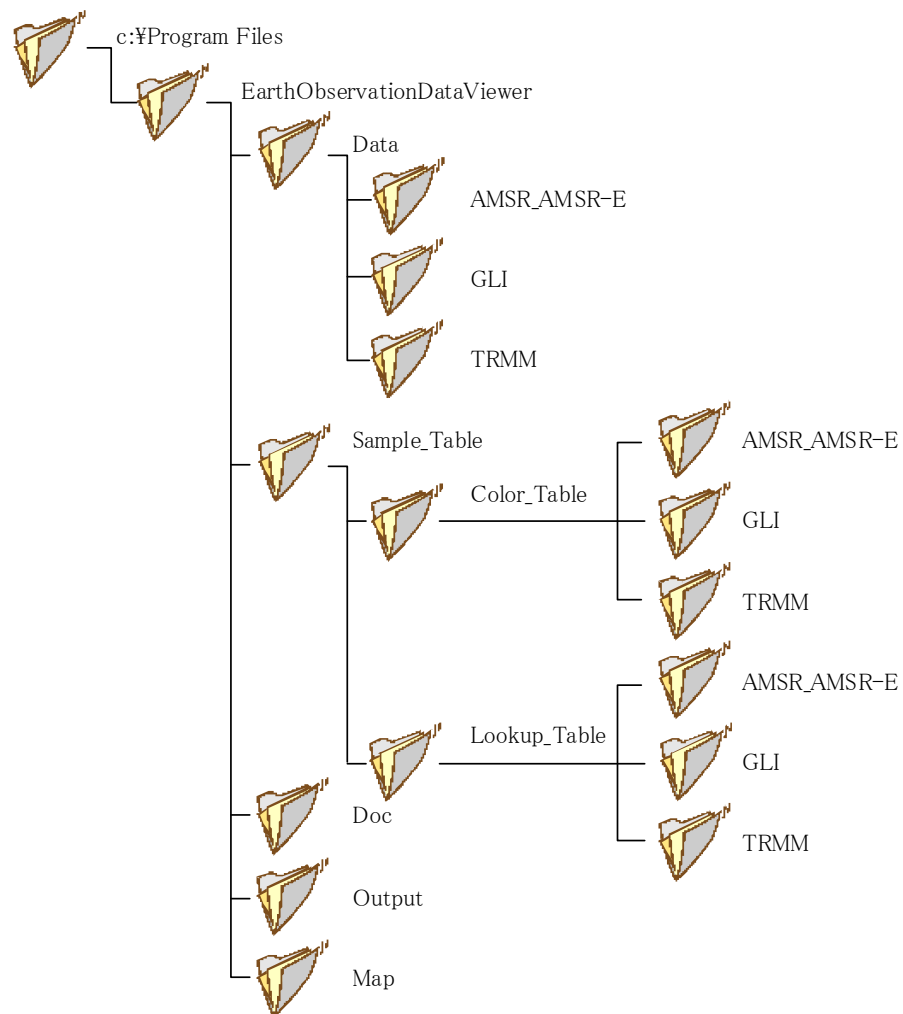


Figure 4-1 the directory structure of the default installation

Table 4-1 Explanation of the directory structure of the default installation

Folder Name	File Name	Descriptions
EarthObservationDataViewer		
	hd421m.dll	The dynamic HDF library.
	hm421m.dll	
	EarthObservationDataViewer.exe	Executable binary
	EarthObservationDataViewer.ini	Parameter file
	GLI_PRODUCT_TYPE.ini	
	TRMM_PRODUCT_TYPE.ini	
Data		
	AMSR_AMSR-E	AMSR/AMSR-E Product
	GLI	GLI Product
	TRMM	TRMM Product
Doc		
	EODV_Manual_EN.pdf	User's manual (English version) (HTML file is used to display PDF file on the web browser.)
	EODV_Manual_EN.html	
	EODV_Link_EN.html	The related links(English version)
	EODV_FAQ_Content_EN.html	FAQ(English version)
	EODV_FAQ_Response_EN.html	
	EODV_FAQ_Title_EN.html	
	EODV_FAQ_EN.html	
Output		
Sample_Table		
	Color_Table	Color table folder
	AMSR_AMSR-E	AMSR/AMSR-E Color table file
	GLI	GLI Color table file
	TRMM	TRMM Color table file
	Lookup_Table	Lookup table folder
	AMSR_AMSR-E	AMSR/AMSR-E Color table file
	GLI	GLI Color table file
	TRMM	TRMM Color table file
Map		
	gshhs_c.b, gshhs_l.b, gshhs_i.b	Map data (Low/Normal /High resolution)