

K&C Phase 3 – Brief project essentials

# **Use of ALOS PALSAR data for supporting forest carbon tracking in Sumatra island: Collaborative research between LAPAN and JAXA**

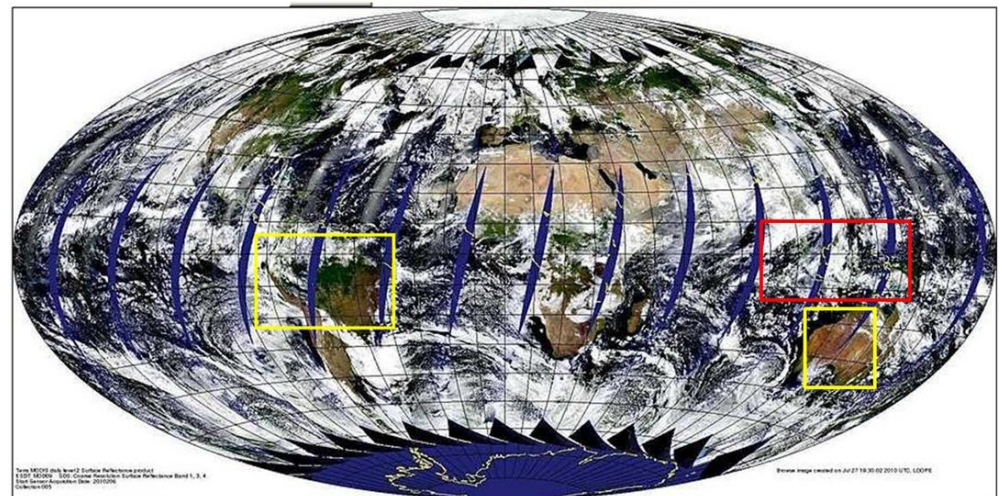
Orbita Roswintiarti  
Remote Sensing Technology and Data Center  
Indonesian National Institute of Aeronautics and Space (LAPAN)

Science Team meeting #16 – Phase 3 Kick-off  
JAXA TKSC/RESTEC HQ, Tsukuba/Tokyo, October 17-21, 2011

## Background

- The implementation of REDD+ (*Reducing Emissions from Deforestation and Forest Degradation "plus" conservation, the sustainable management of forests and enhancement of forest carbon stocks*) strategy in Indonesia focuses on **the sustainable management of forest** and **peat forest**.
- In G20 Summit in Pittsburgh in September 2009, President Susilo Bambang Yudhoyono committed to **26% GHG emission reduction in 2020** in Indonesia, or even to **41% reduction with the international support**.
- Therefore, the wall-to-wall **annual forest cover change** is very important for determining the **annual carbon stock changes**.
- The **interoperability of optical and radar data** is expected to resolve the forest cover mapping in Indonesia.

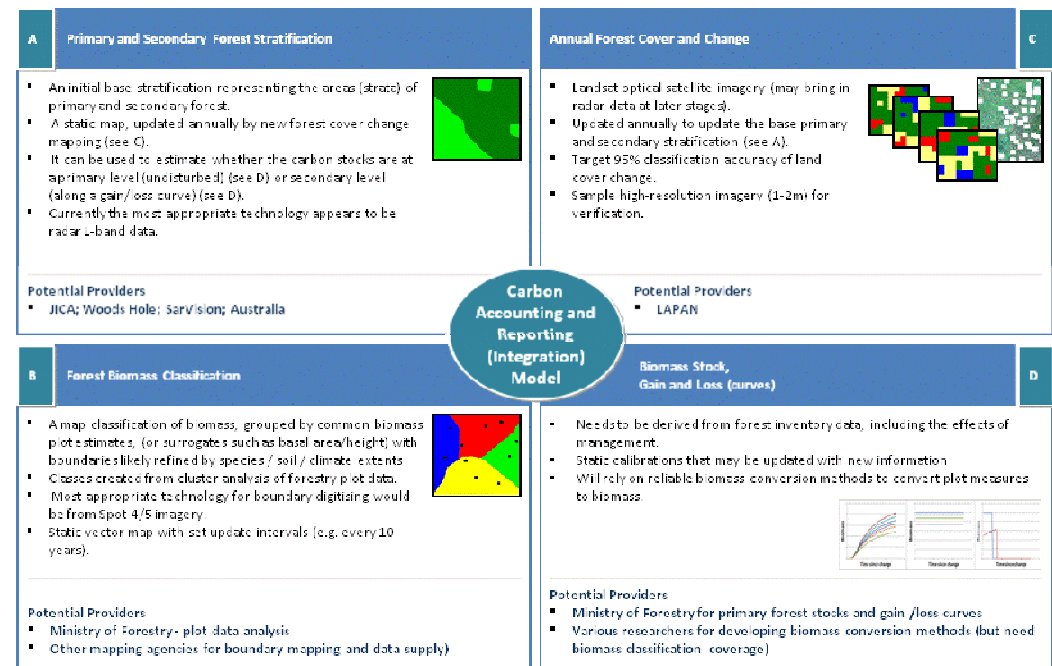
Humid tropical cloud cover



## Indonesia's National Carbon Accounting System (INCAS) (2009-2013)

- INCAS will provide a comprehensive and credible account of Indonesia's land based emissions profile and sinks capacity.
- INCAS will support Indonesia's reporting requirements under the UNFCCC and a post-2012 climate change agreement.
- It will also support entry to carbon markets and the overall MRV system.

### Carbon accounting and reporting model



SOURCE: Australian climate change office

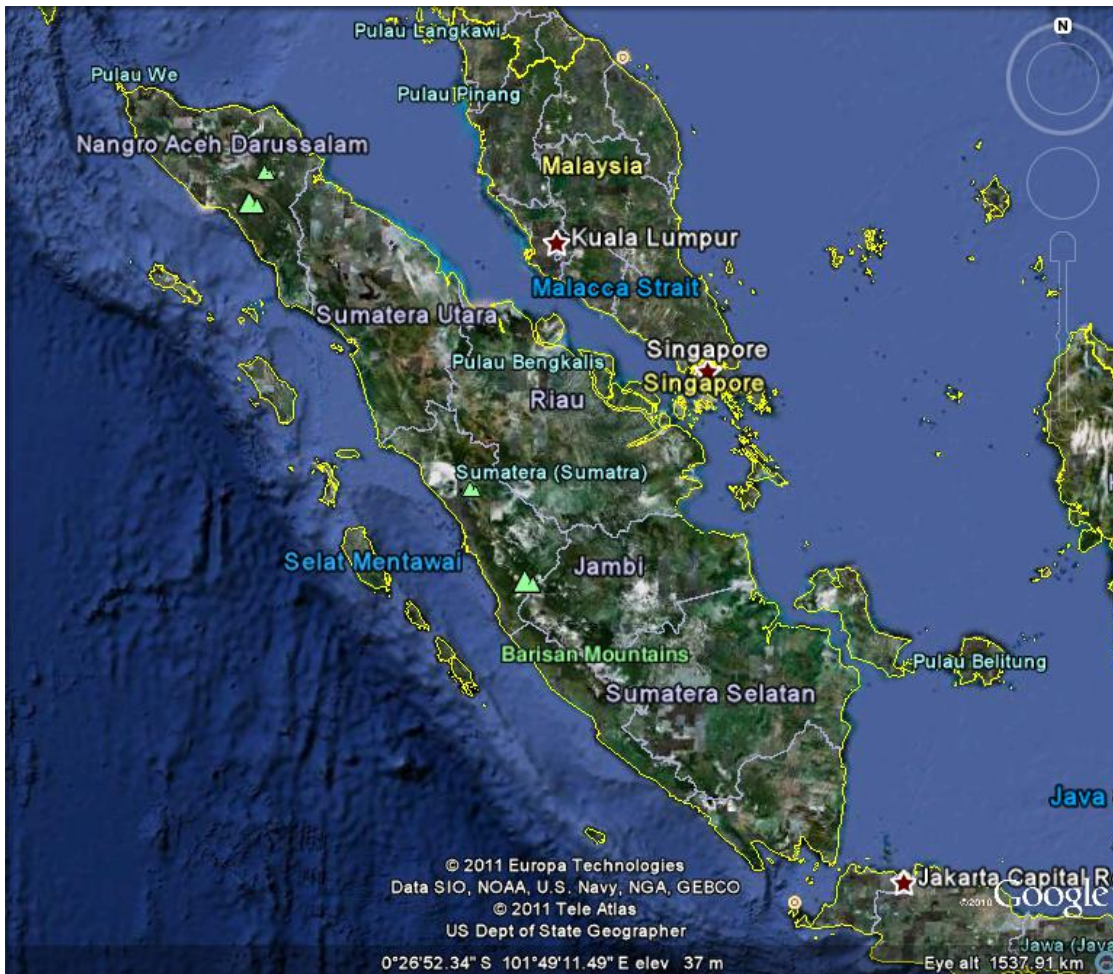


### Target:

Nov 2011: Kalimantan FNF map (2000-2009)  
Apr 2012 : Sumatera FNF map (2000-2009)



## Project area(s)



- Geographic location: Sumatra island
- Local site(s):
  - Merang REDD Pilot Project (center point: 2.03S, 104.12E)
  - Jambi REDD (2.47S, 101.53E)
  - Harapan (2.20S, 103.38E)
  - Riau Pelalawan (0.0N, 102.00E)

## Project objectives

To conduct the collaborative research on the use of ALOS PALSAR archives and the verification dataset in Sumatra island through:

- the development of forest carbon tracking modellings
- capacity building
- data sharing
- ground-truth experiments
- information production
- workshop/seminar

The objective of this activity would synchronize with that of the **Group on Earth Observations Forest Carbon Tracking (GEO FCT)** initiative, particularly to support **forest carbon Measurement, Reporting, and Verification (MRV) system** for national REDD+ implementation.

## Project schedule

- **June-December 2011:** the preparation phase, which covers the coordination meetings, data inventories, software development and improvements, and hardware preparation.
- **January-December 2012:** the implementation phase-1, which covers the trainings, operational for ALOS PALSAR processing and classification, and ground-truth experiments.
- **January-December 2013:** the implementation phase-2, which covers result analysis and interpretation, accuracy assessment, and workshop/seminar.

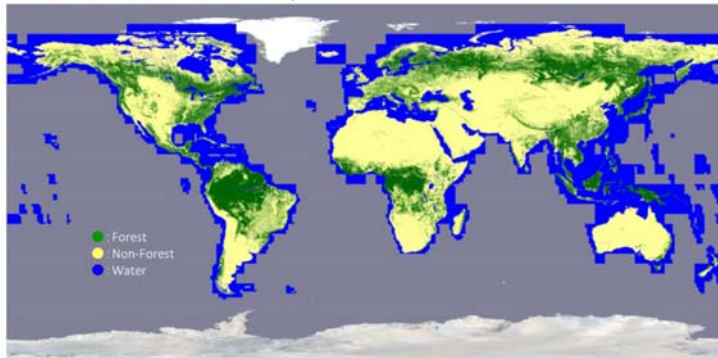


## Support to JAXA's global forest mapping effort

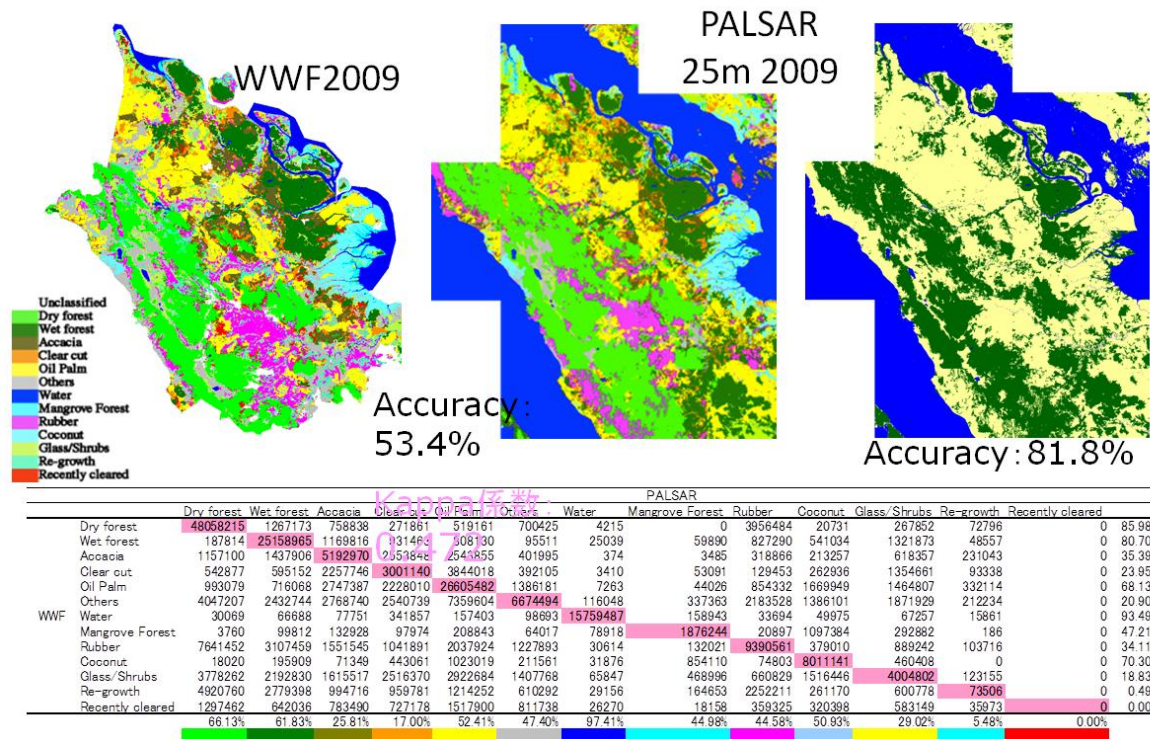
The activity is expected to improve the PALSAR global forest products (at the 10-25m pixel spacing) that are currently conducted by JAXA EORC for Sumatera island.

Classification Result WWF x PALSAR: Level slicing

PALSAR 10m Mosaic 2009  
Forest/Non-Forest Map

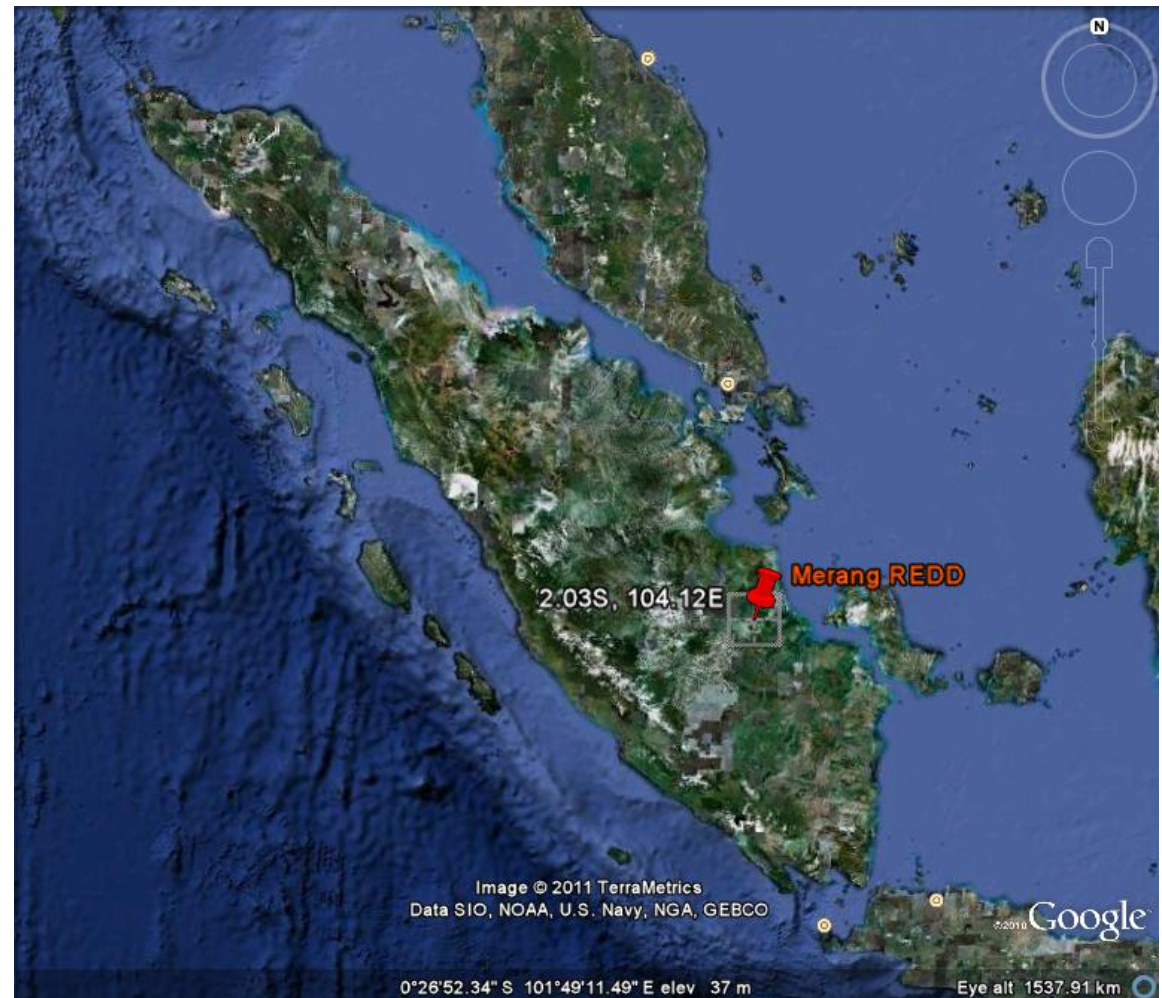


Source: JAXA EORC



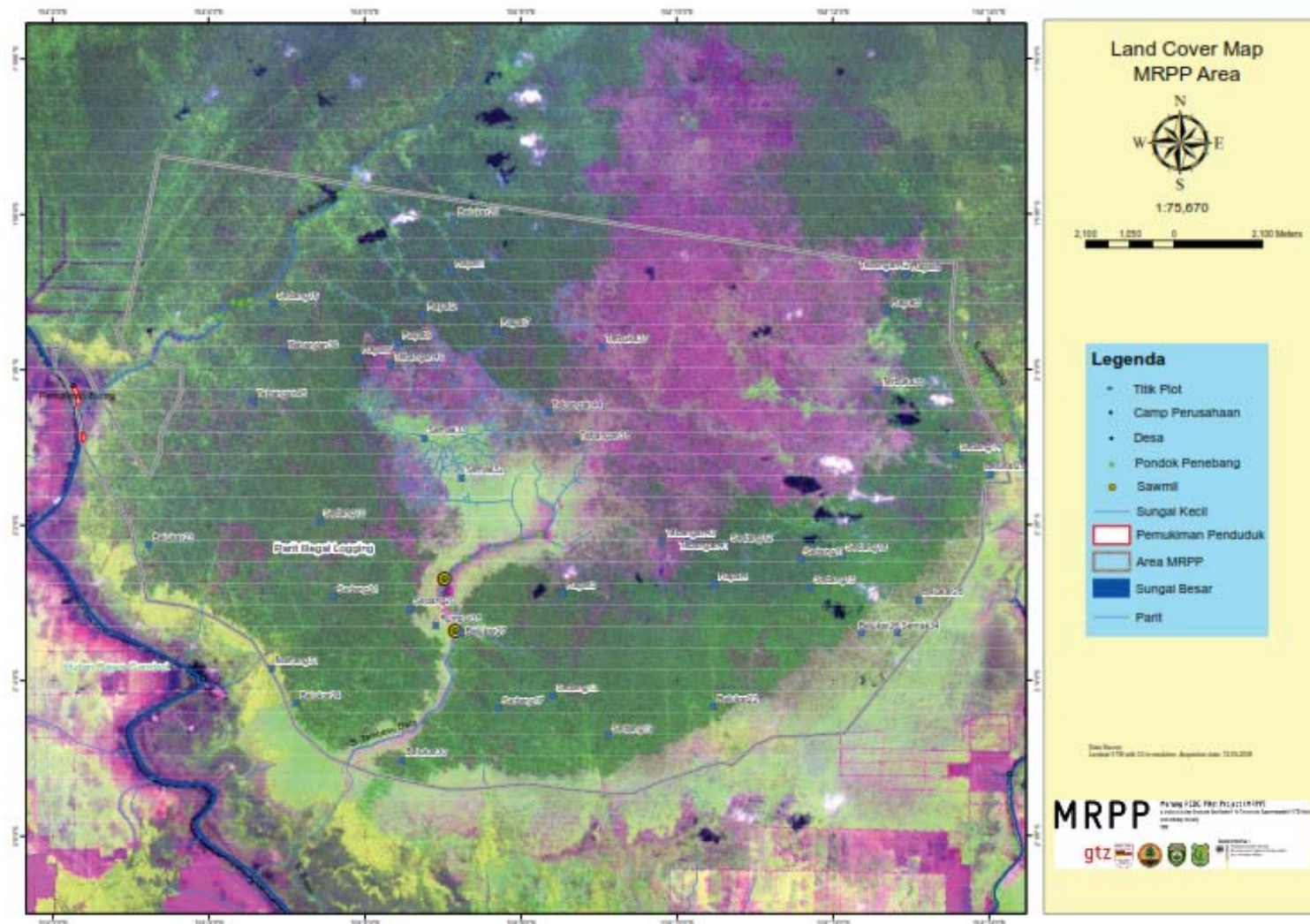
## Ground-based data

The ground-based data that will be shared with JAXA are expected to be obtained from the **local government offices** in Sumatra and the **Merang REDD Pilot Project (MRPP)** activity in South Sumatra.





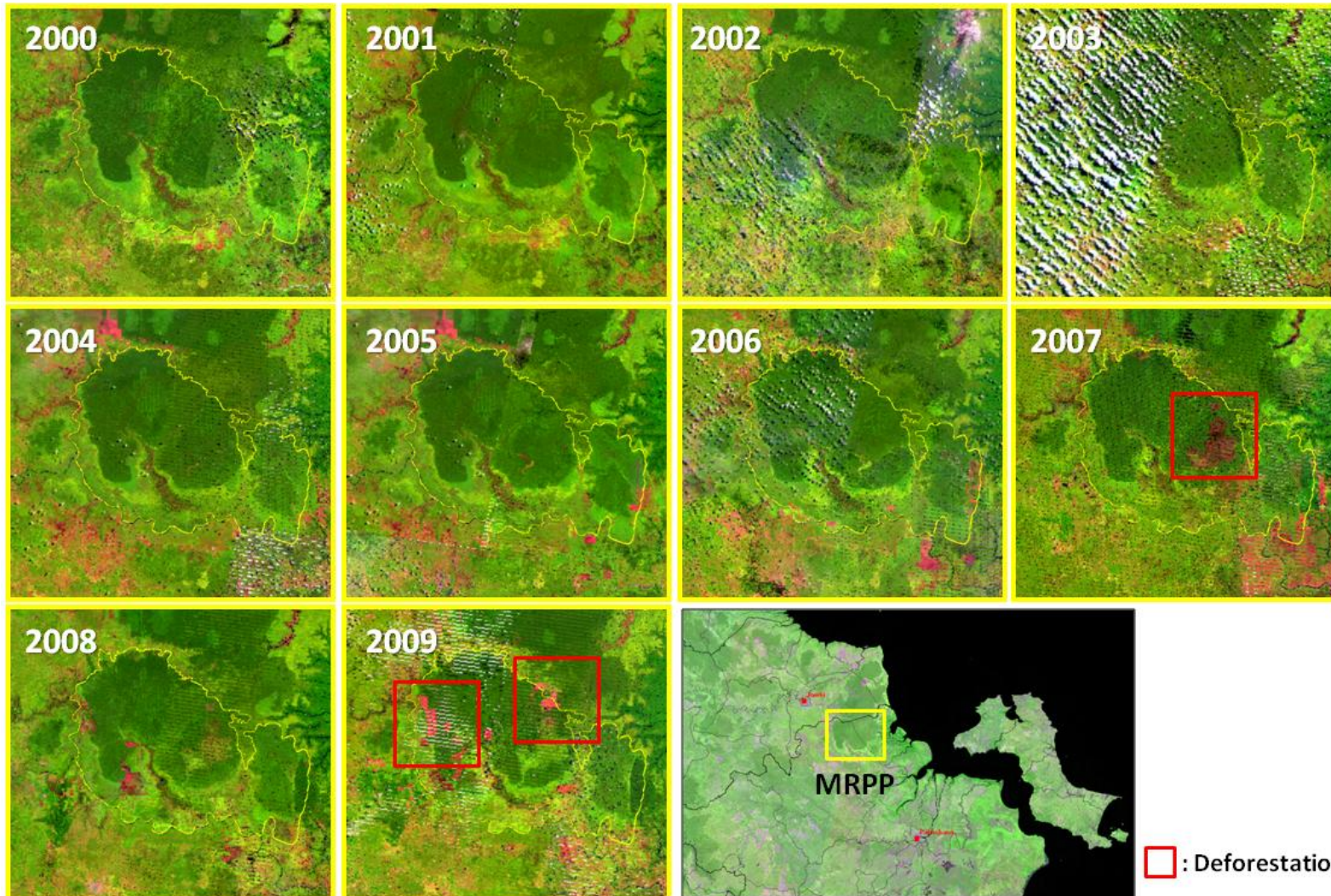
## Land cover of MRPP area (source: Landsat 2008)



[illegible]

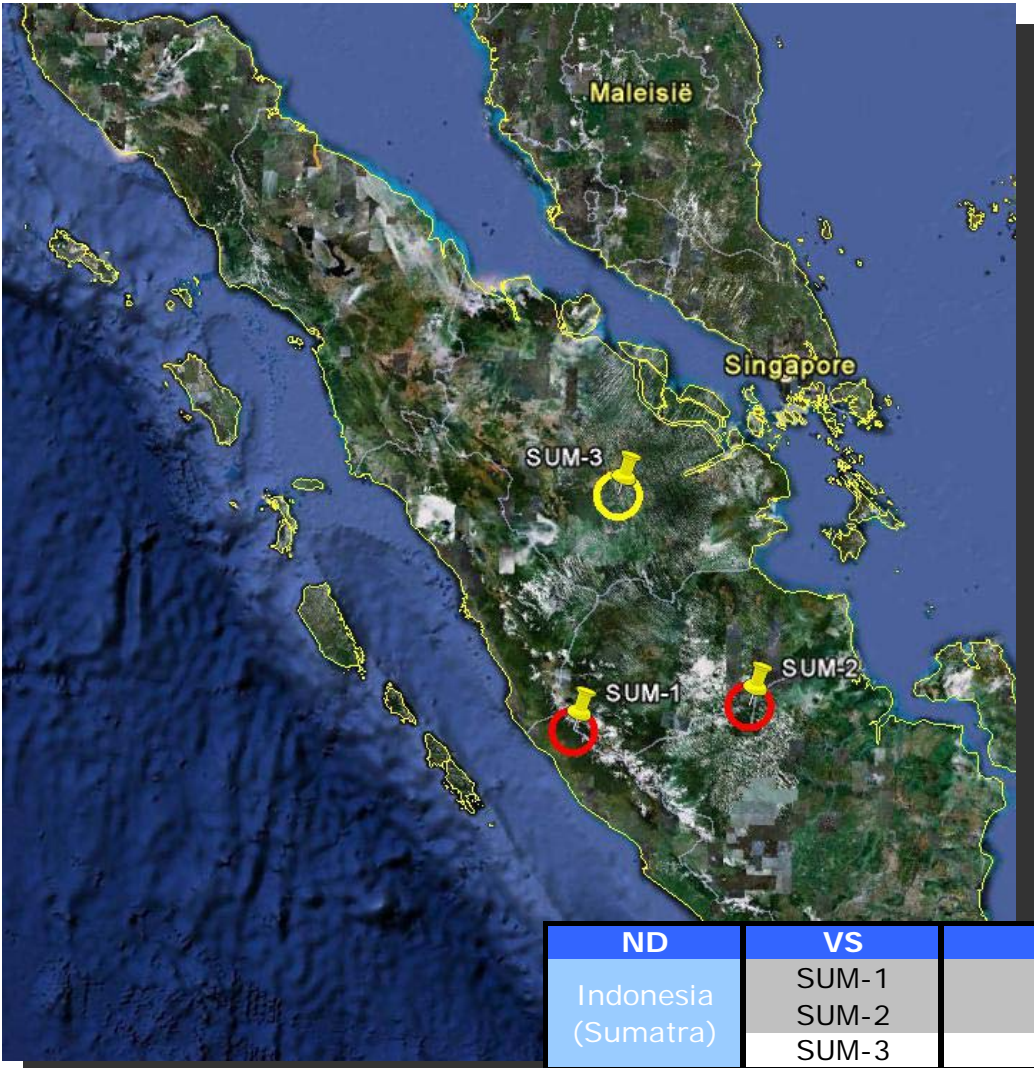


## Annual Landsat imageries of MRPP area (2000-2009)





Other ground-based sites



Validation sites: SUM-1, -2, -3

ND	VS	Name	lat	long	Priority
Indonesia (Sumatra)	SUM-1	Jambi REDD	S2.47	E101.53	1
	SUM-2	Harapan	S2.20	E103.38	1
	SUM-3	Riau Pelalawan	N0.0	E102.00	2



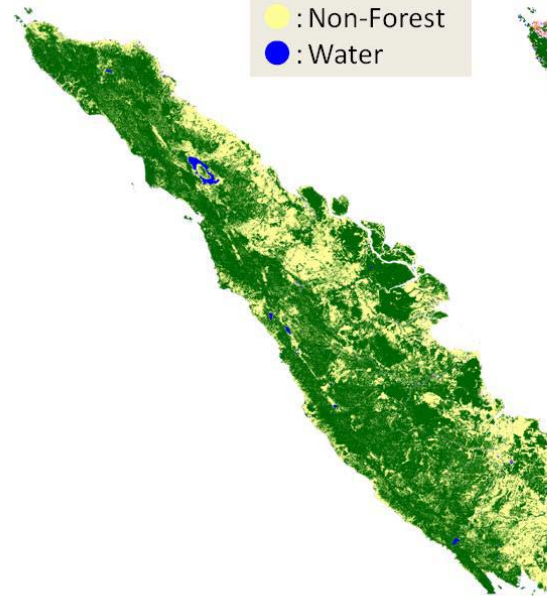
## Deliverables

The **validated Horizon-1 products** of the **annual forest/non-forest change** and the **annual Land Use/Land Use Change and Forestry (LULUCF)** for 2006-2010.

### Forest Classification (Sumatra 2009)

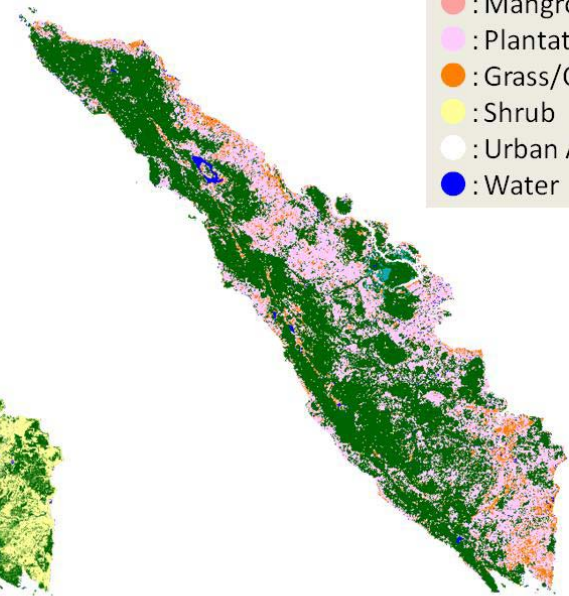
#### 1) Forest/Non-Forest Classification

- : Forest
- : Non-Forest
- : Water



#### 2) Land Cover Classification

- : Forest
- : Peat Forest
- : Mangrove
- : Plantation
- : Grass/Crop
- : Shrub
- : Urban Area
- : Water



Source: JAXA EORC

## Responsibilities

### LAPAN responsibility

- LAPAN will perform the **forest classification** using the JAXA classification software (JCS) and evaluate the classification results using the ground-truth data (i.e., high-resolution satellite data, ground-based data, etc).
- LAPAN will provide the **evaluation results** and **the ground-truth data** to JAXA for the further classification accuracy improvement.
- LAPAN will provide the **biomass data** obtained from the Merang REDD Pilot Project (MRPP) in South Sumatra.
- LAPAN will support JAXA to conduct the **ground-truth experiments** in Sumatra by supporting permission for the ground-truth experiments.
- LAPAN together with JAXA will conduct **workshop or seminar** on the results of the activity for the related stakeholders.

### JAXA responsibility

- JAXA will provide the **25m resolution annual ALOS PALSAR mosaic data** over **Sumatra island** for period of **2006-2010**.
- JAXA will develop and improve the **JCS** and provide it to LAPAN.
- JAXA will conduct the **capacity building** for LAPAN staff, i.e. short-term trainings on SAR processing, image interpretation, and forest classification.





ALOS

K&C Initiative  
*An international science collaboration led by JAXA*

**THANK YOU**