

PALSAR-2 processing and data provision to K&C Science Team

Takashi Ogawa and RESTEC data production team

Takeshi Motohka (JAXA)

Masato Hayashi (JAXA)

Masanobu Shimada (TDU/JAXA)

Ake Rosenqvist (soloEO)

Contents

- ✓ **Description of Products**
- ✓ **Path Image Data Products**
- ✓ **ScanSAR mosaic Products**

Description of Products

	Satellite /sensor	Mode	Area	Pixel Spacing
Path Images	ALOS-2 /PALSAR-2	FBD	As requested	25m
	ALOS-2 /PALSAR-2	ScanSAR	As requested	50m

	Satellite /sensor	Mode	Area	Pixel Spacing
Mosaic Products	ALOS-2 /PALSAR-2	ScanSAR	Asia-Pacific Africa Americas	50m
	ALOS /PALSAR	ScanSAR	Asia-Pacific Africa Americas	100m

Path images

	FBD	ScanSAR	Total	remarks
Requests	563	548	1,111	Total number of available (observed) path is 1,017 path
Provision	533	484	1,017	completed

Status:

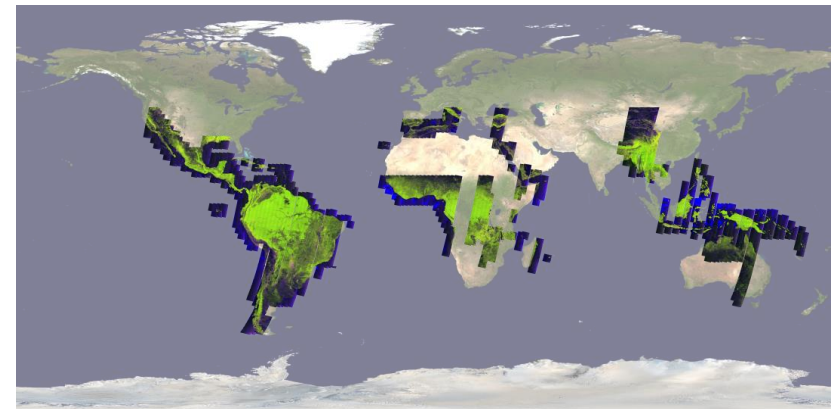
- ◆ Number of K&C members who have requested path products:
 - 5 members
- ◆ JAXA/EORC have already announced the FTP site.

ScanSAR mosaics

- Jun-Jul..... JFY-2016 ALOS-2 ScanSAR mosaics 60,222 tiles
- Aug-Sep.... JFY-2015 ALOS-2 ScanSAR mosaics 60,197 tiles
- Oct-Nov..... JFY-2014 ALOS-2 ScanSAR mosaics 40,767 tiles
- Dec-Jan..... 2006-2010 ALOS ScanSAR mosaics 77,252 tiles ←Now
- Feb-Mar.... JFY-2017 (Apr to Sep) ALOS-2 ScanSAR mosaics
- Apr..... JFY-2017 (Oct to Mar) ALOS-2 ScanSAR mosaics
- TBD..... 2011 ALOS ScanSAR mosaics

Status:

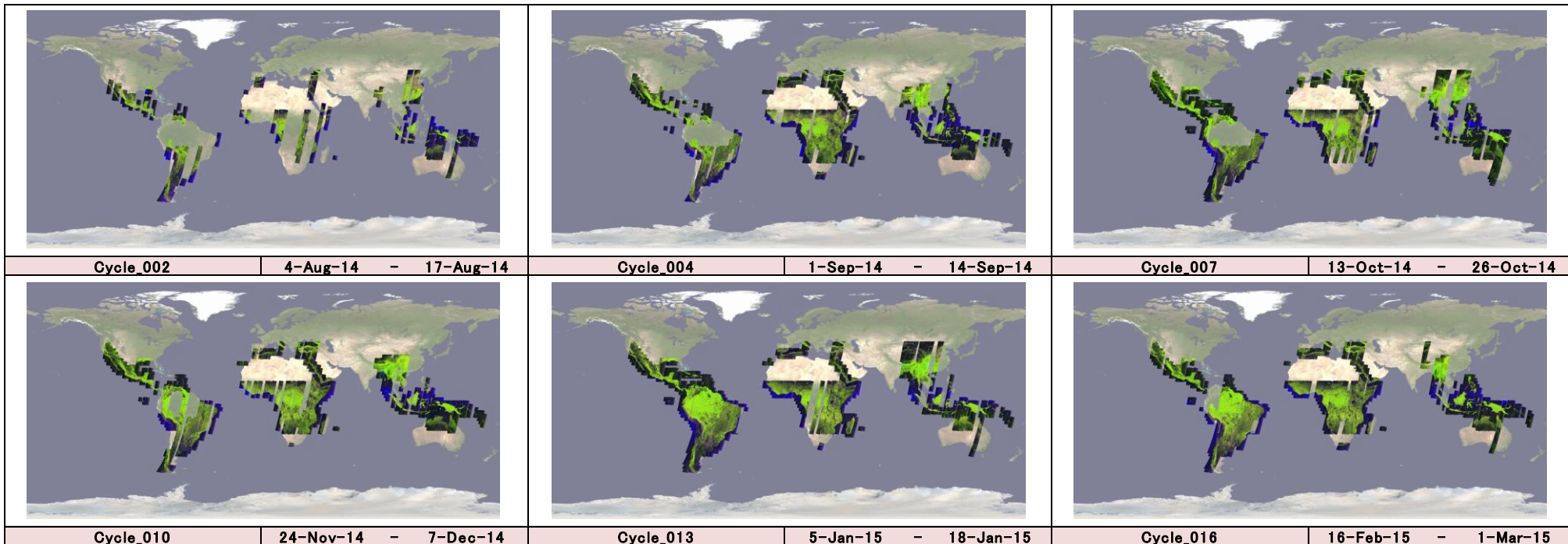
- ◆ JAXA/EORC has completed provision of 2014-2016 ScanSAR mosaic data
- ◆ We are preparing provision of 2017 mosaics in the beginning of Feb. and in April (2018)



Cycle 33 ALOS-2 ScanSAR mosaics

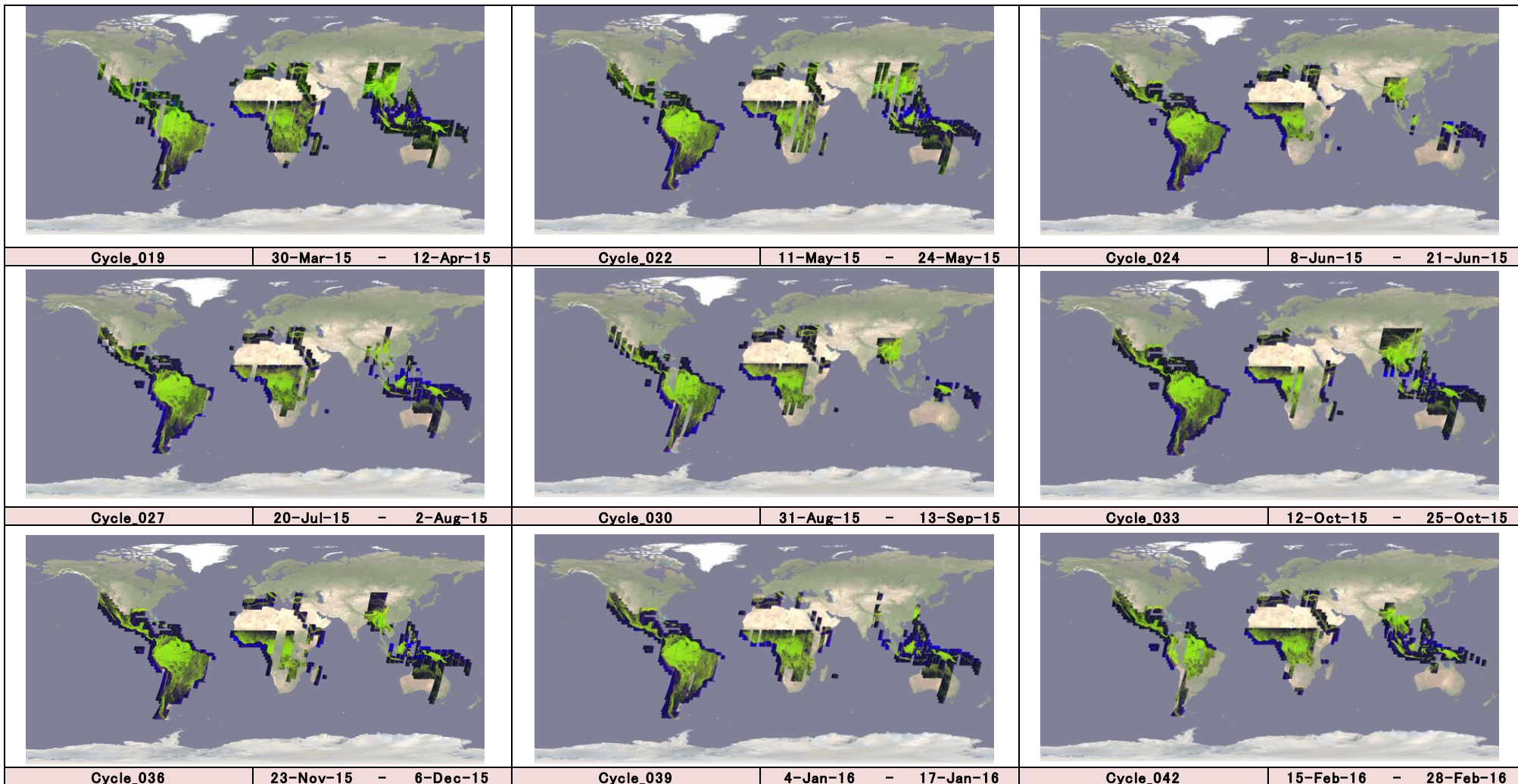
ScanSAR Mosaic Products JFY-2014

Cycle 002 – 016 cover map



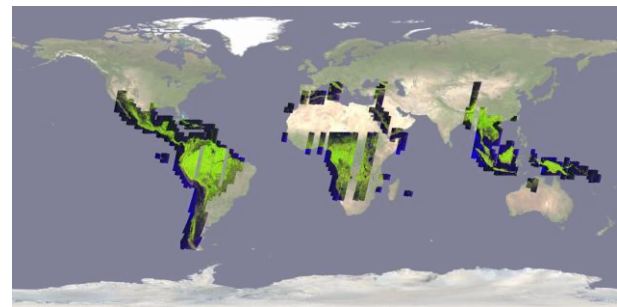
ScanSAR Mosaic Products JFY-2015

Cycle 019 – 045 cover map



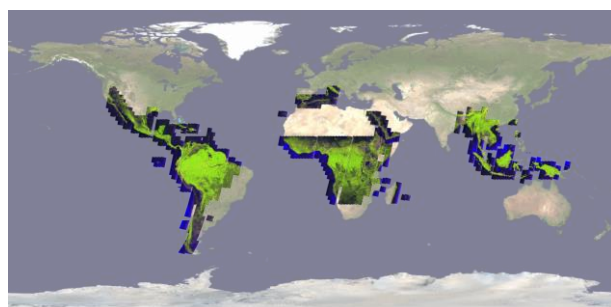
ScanSAR Mosaic Products JFY-2016

Cycle 048 – 065 cover map



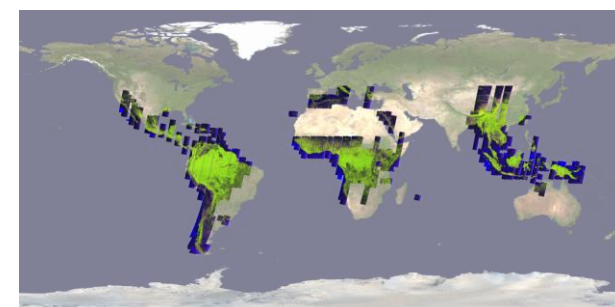
Cycle_045

28-Mar-16 - 10-Apr-16



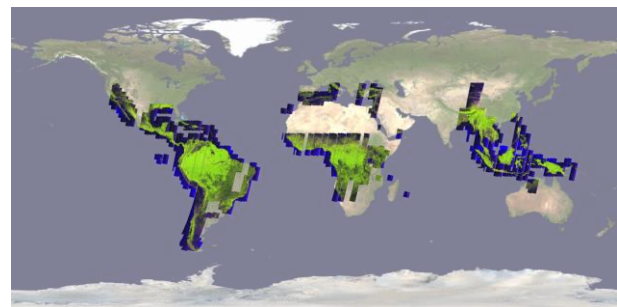
Cycle_048

9-May-16 - 22-May-16



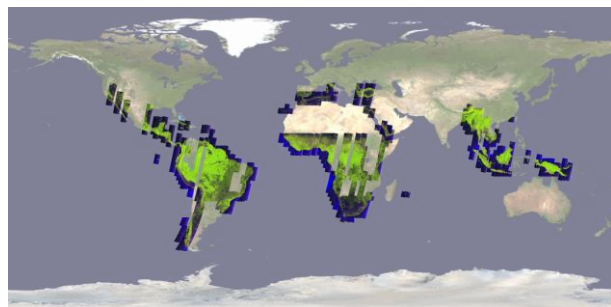
Cycle_050

6-Jun-16 - 19-Jun-16



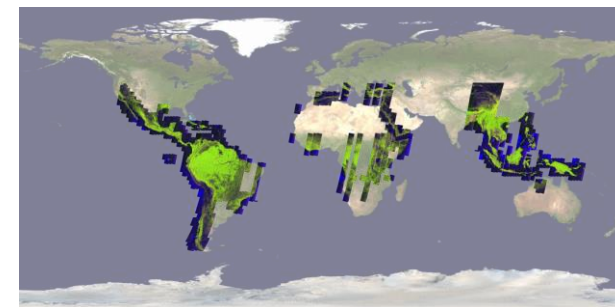
Cycle_053

18-Jul-16 - 31-Jul-16



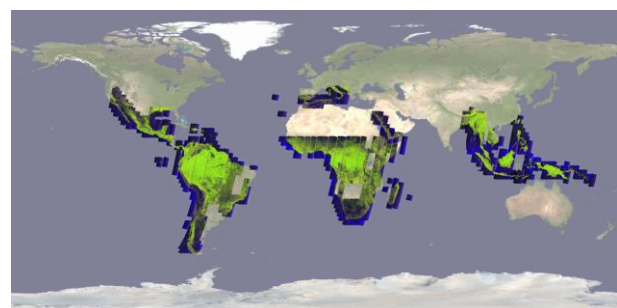
Cycle_056

29-Aug-16 - 11-Sep-16



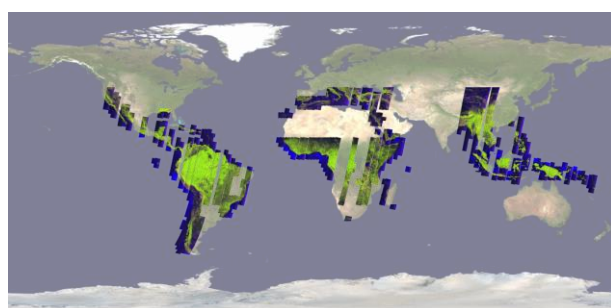
Cycle_059

10-Oct-16 - 23-Oct-16



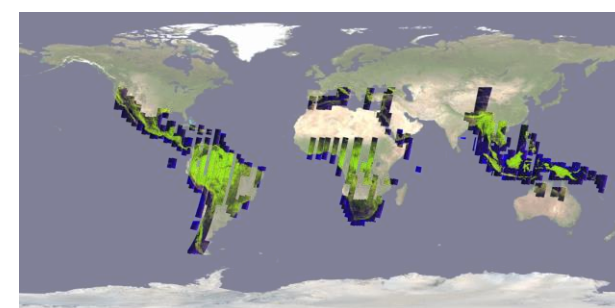
Cycle_062

21-Nov-16 - 4-Dec-16



Cycle_065

2-Jan-17 - 15-Jan-17



Cycle_068

13-Feb-17 - 26-Feb-17

- Please send the requests for mosaic or path products to
Z-ALOS-KC@ml.jaxa.jp
(please check your agreement with JAXA if you can request mosaic or path products)
- For questions regarding standard product data (AUIG-2), please contact the EORC Order Desk
Z-orderdesk@ml.jaxa.jp

Thank you for your attention

Questions?