

# ScanSAR mosaic dataset

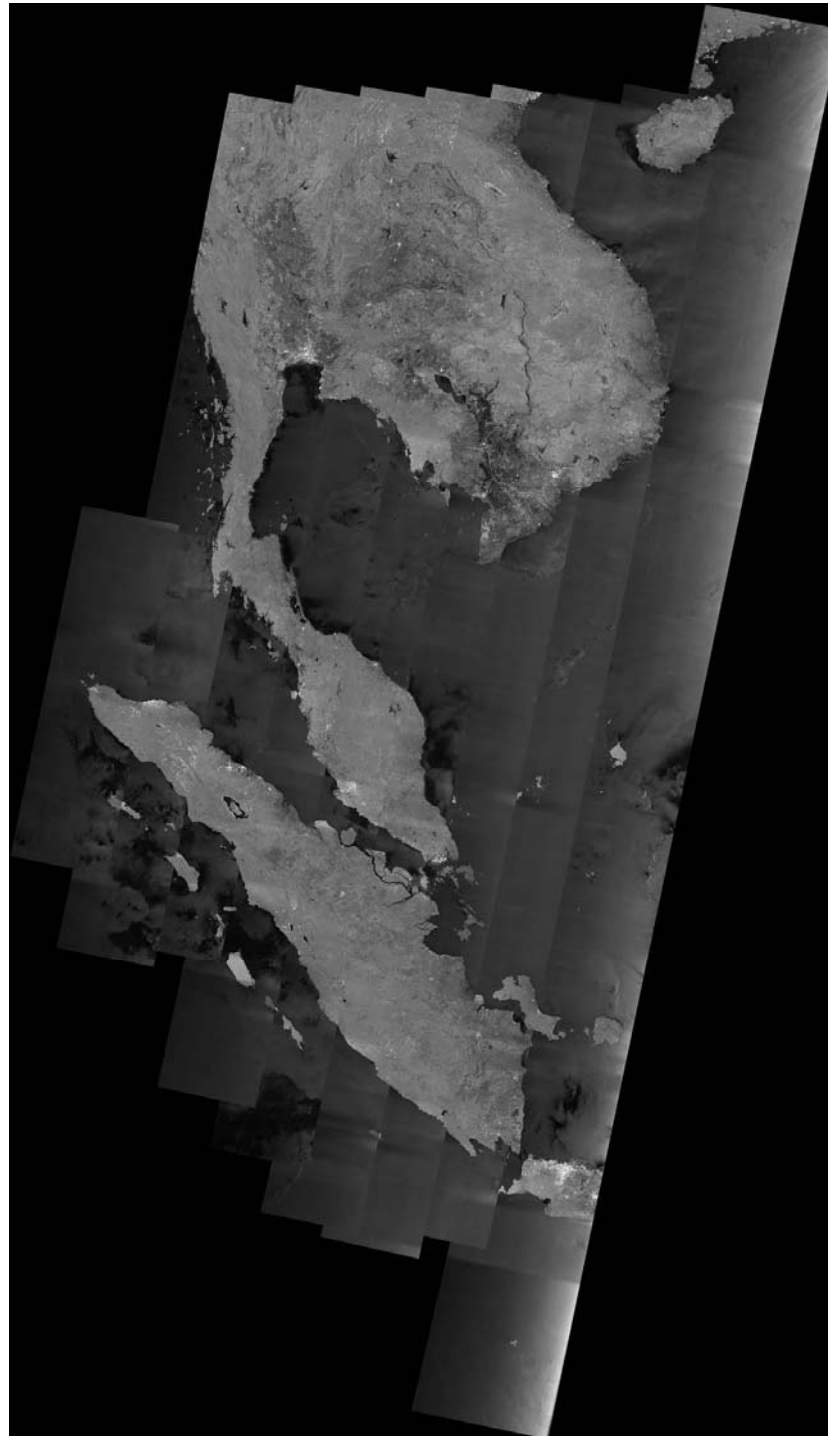
M. Shimada and D. Sango

Slope correction : SRTM3

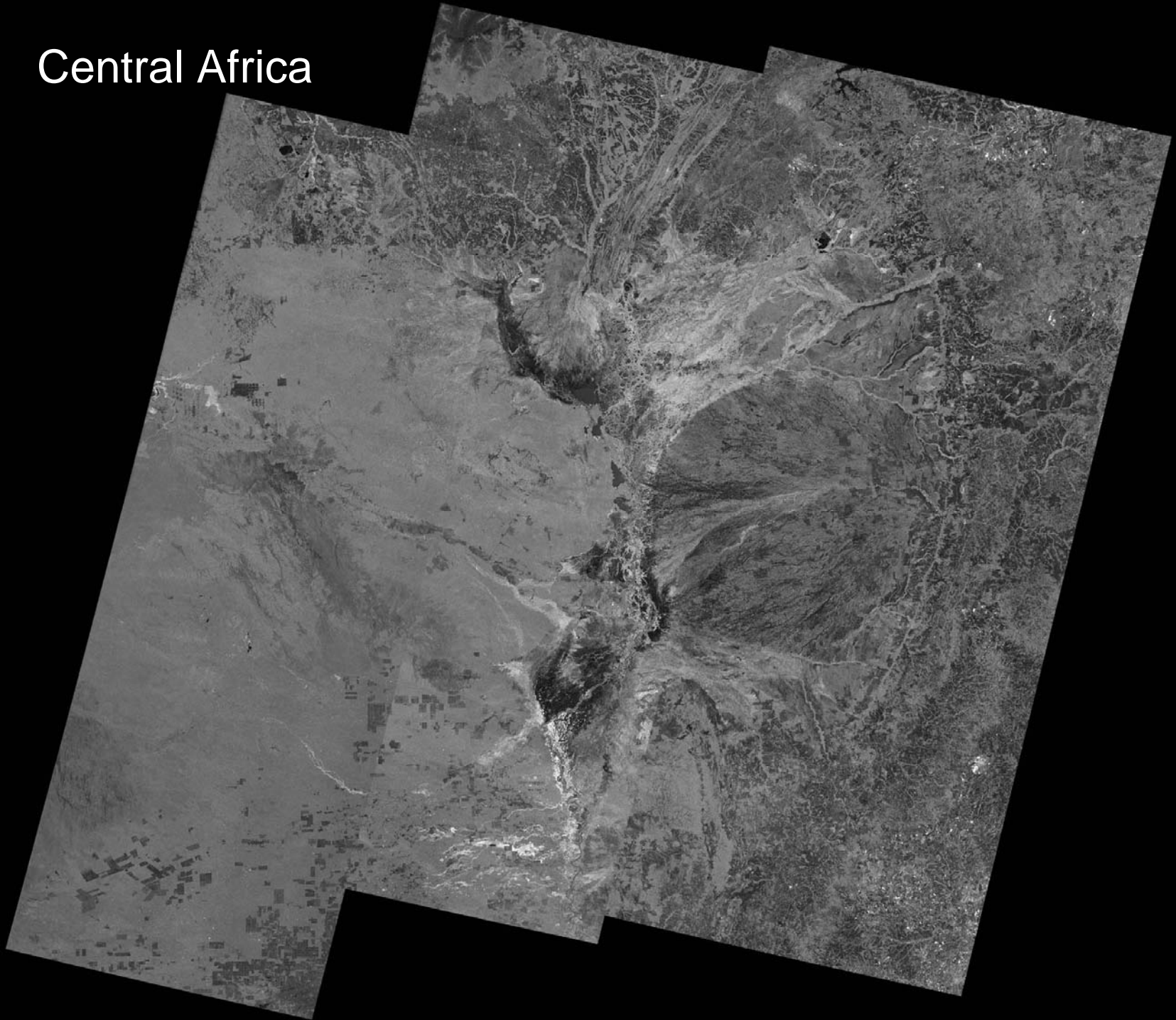
Ortho-rectification

Mosaicking regional areas

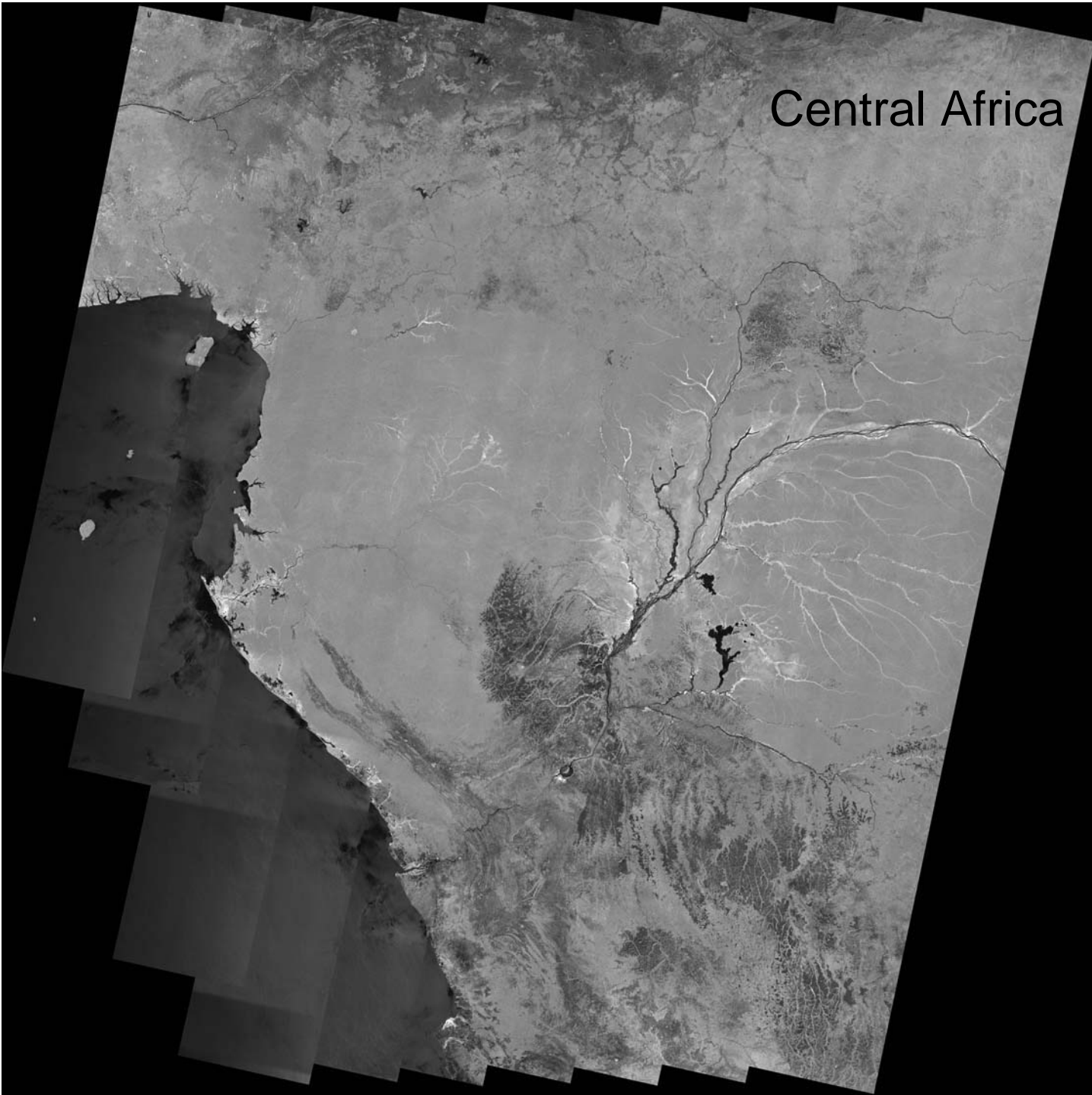
# South East Asia



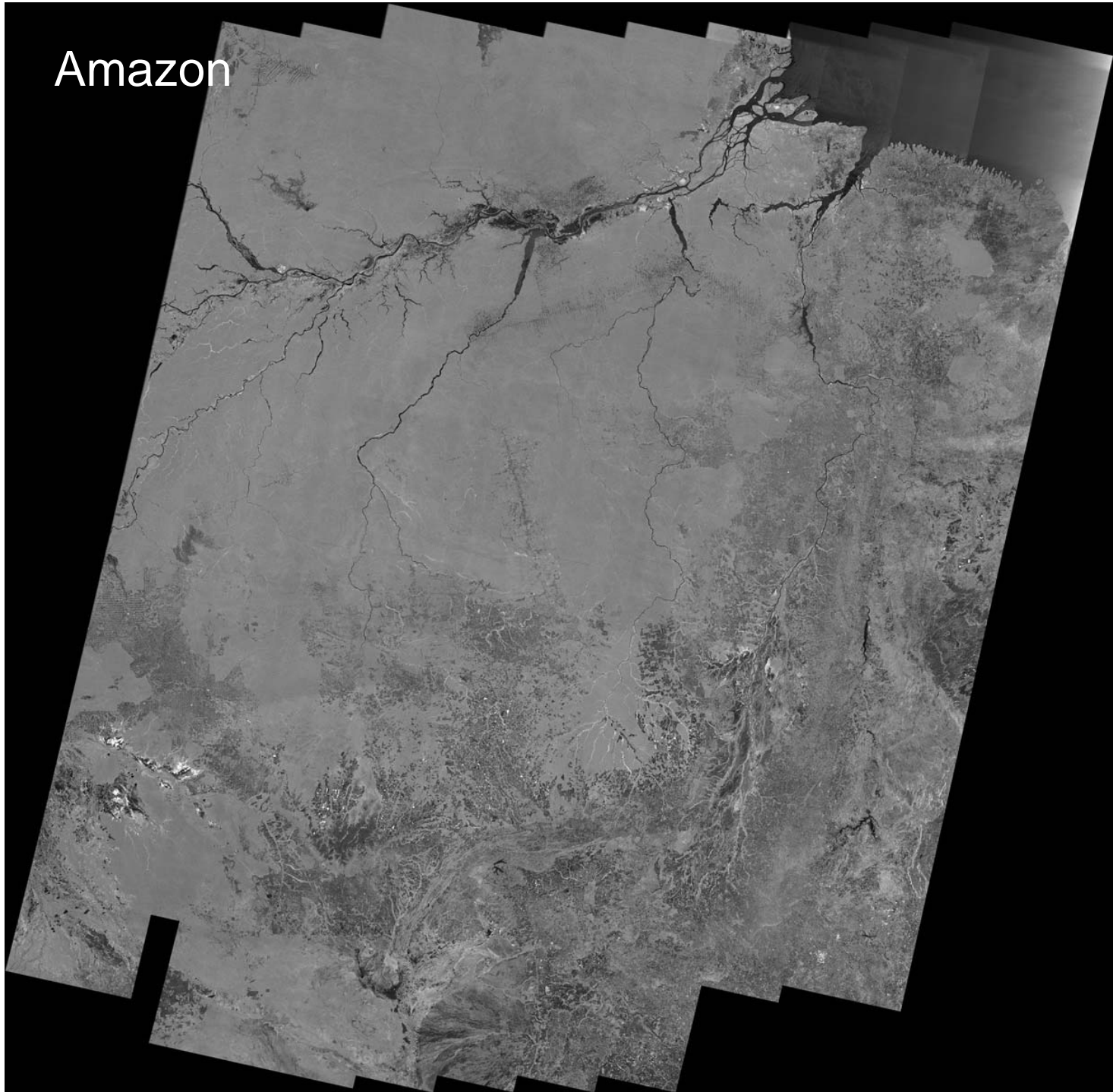
# Central Africa



Central Africa



Amazon



## Summary

ScanSAR Mosaic (ortho-rectified and slope corrected) can be generated.

Along Track stripes can be visible slightly. They can be eliminated by filtering process.