

K&C Desert & Water Theme

Project Objectives

Use penetration capabilities of L-band SAR to map subsurface geology in North Africa and Arabia, as a basis to new water prospecting plans.

Results

We built a PALSAR mosaic covering Sahara and Arabia in both HH and HV polarizations. This mosaic reveals previously unknown geological features (paleo-rivers, faults, craters) that will help to better understand the geology and past climate of these regions.

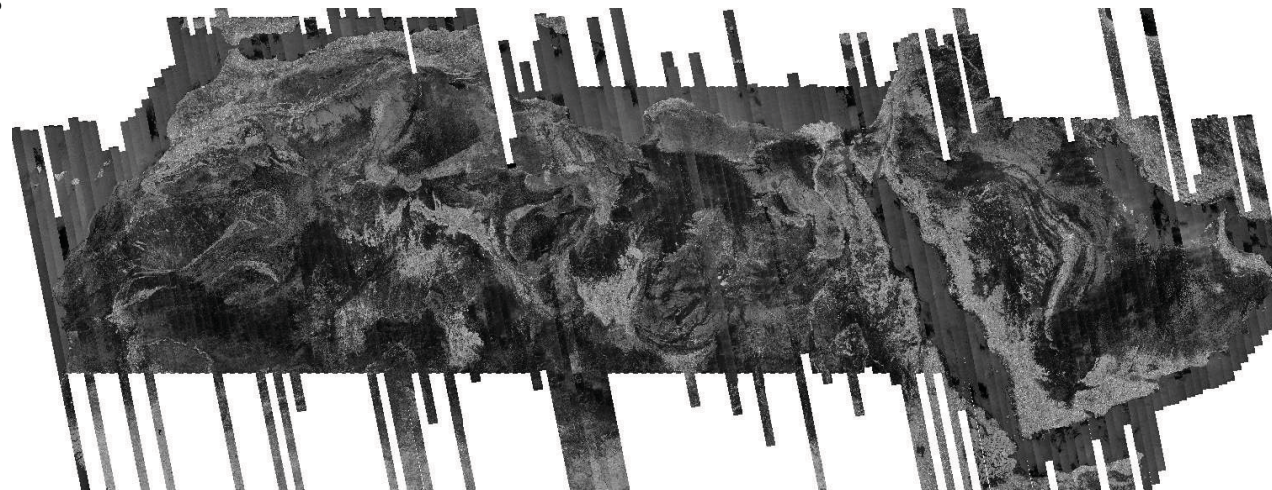
ALOS PALSAR data used

Cycles 12-13, acquired June-July 2007

Other data sources

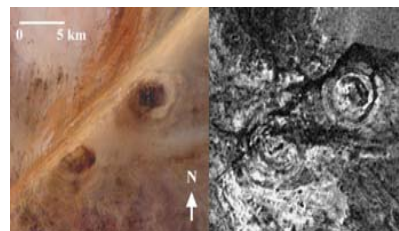
JERS-1 / Landsat TM / SRTM

PALSAR HH mosaic of Sahara and Arabia

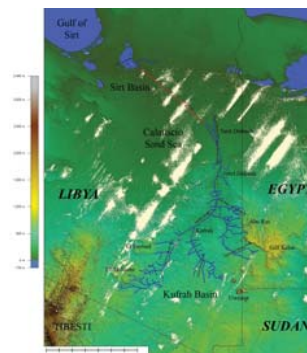


K&C Science Team Members

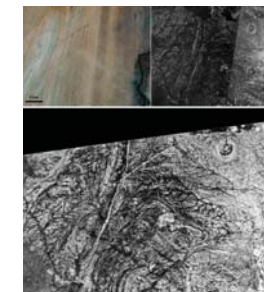
Philippe Paillou, Sylvia Lopez
OASU, Bordeaux, France
philippe.paillou@obs.u-bordeaux1.fr
Tom Farr
JPL, Pasadena, USA
Ake Rosenqvist
soloEO, Huddinge, Sweden



Double impact crater in southern Libya



Paleo-river in eastern Libya



Fault systems in northern Sudan