

# SIGMA-SAR and EORC processing chain

Masanobu Shimada

JAXA/EORC

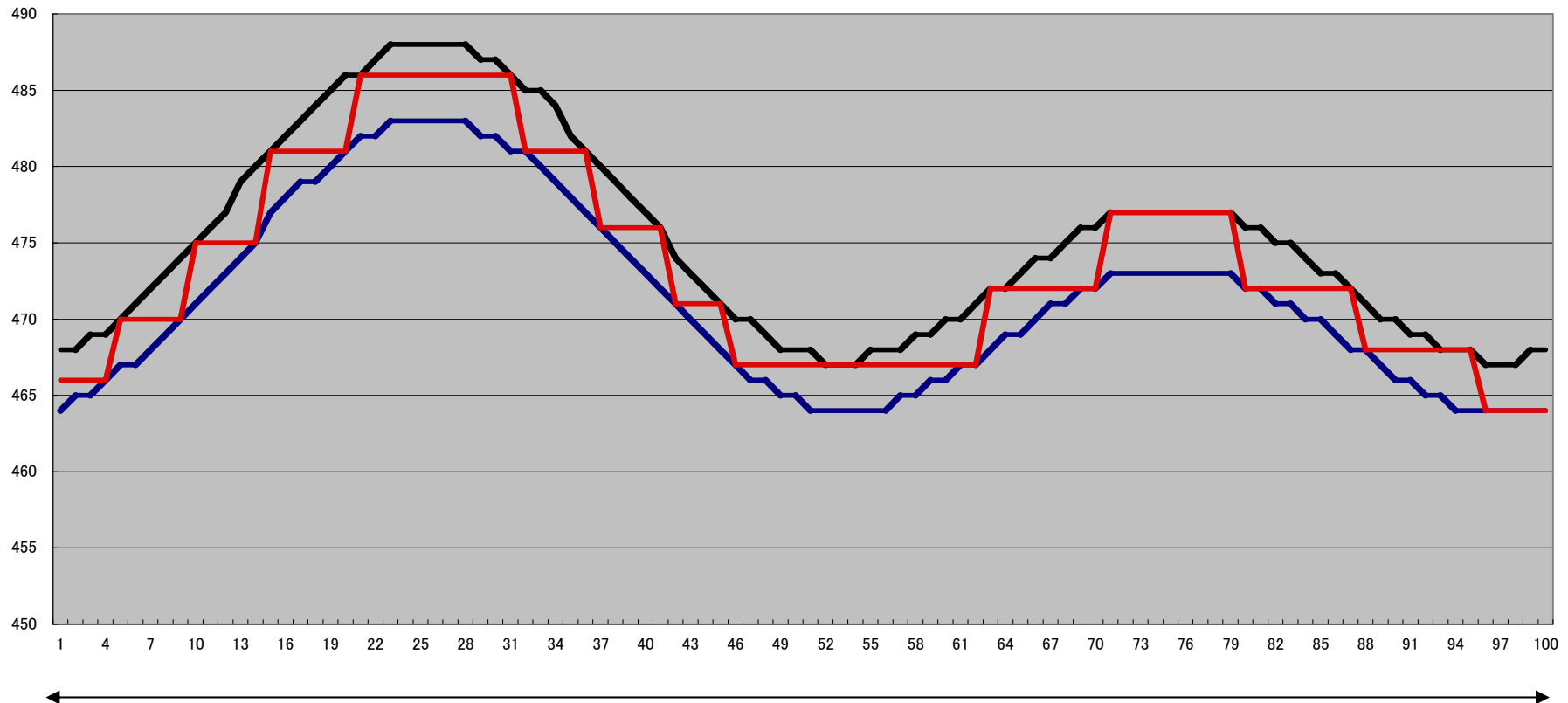
Jan. 16 2006

General

Processor calibration

Strip processing

## PRI (pulse repetition interval)



Revolution

7 times/descending or ascending node  
3 times/strip (2000 - 3000 km)

Difficulties in the PALSAR processing (long strip)

Correction of

shifting the SWST every 30 second ( $1\sim 2\ \mu\text{s}$ )

PRF changes ( $\sim 30\ \text{Hz}$ )

referring to the those of the first line.

processing modes :        STRIP  
                              BROWSE  
                              SCANSAR

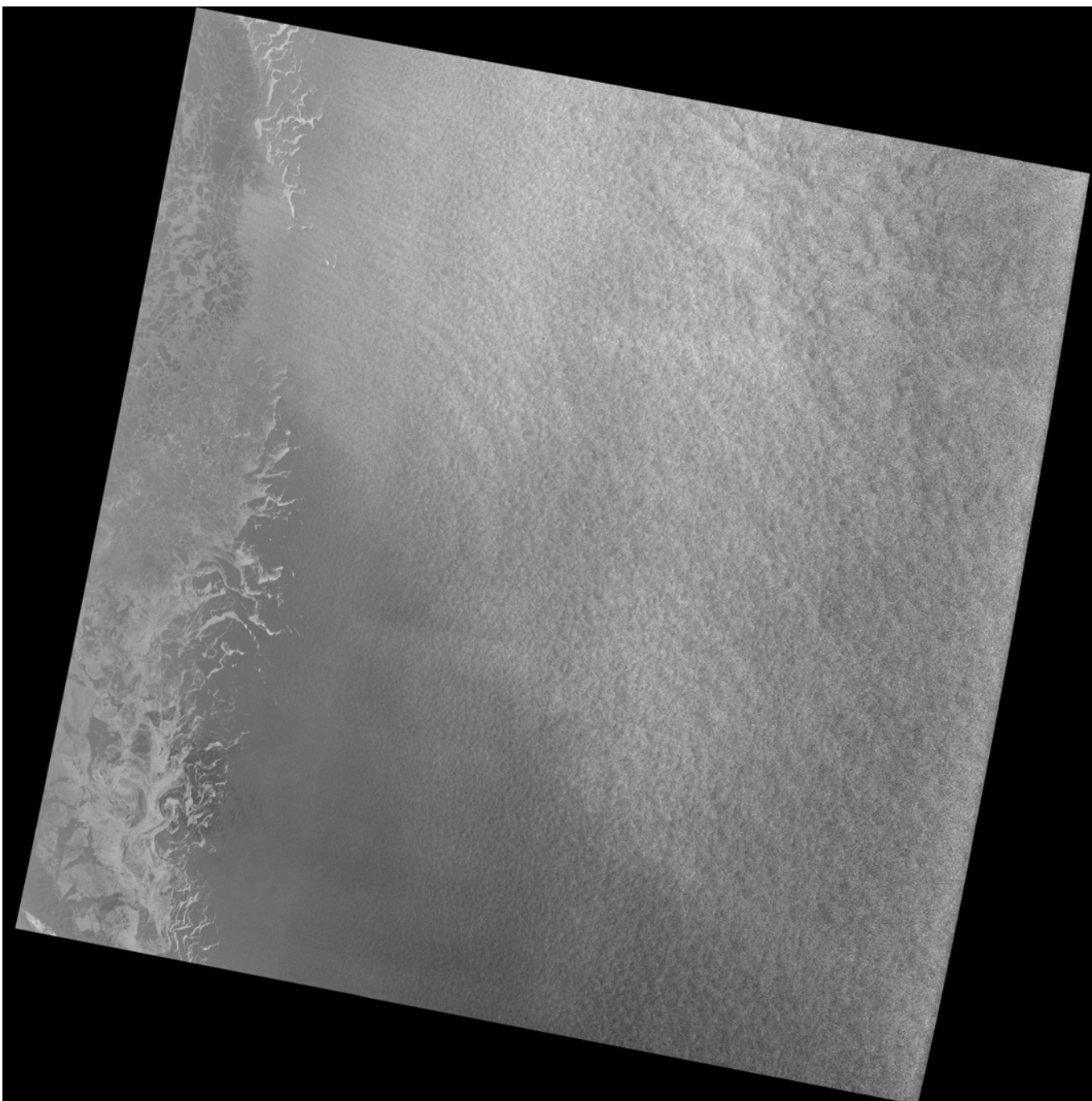
Most of the problems are solved.

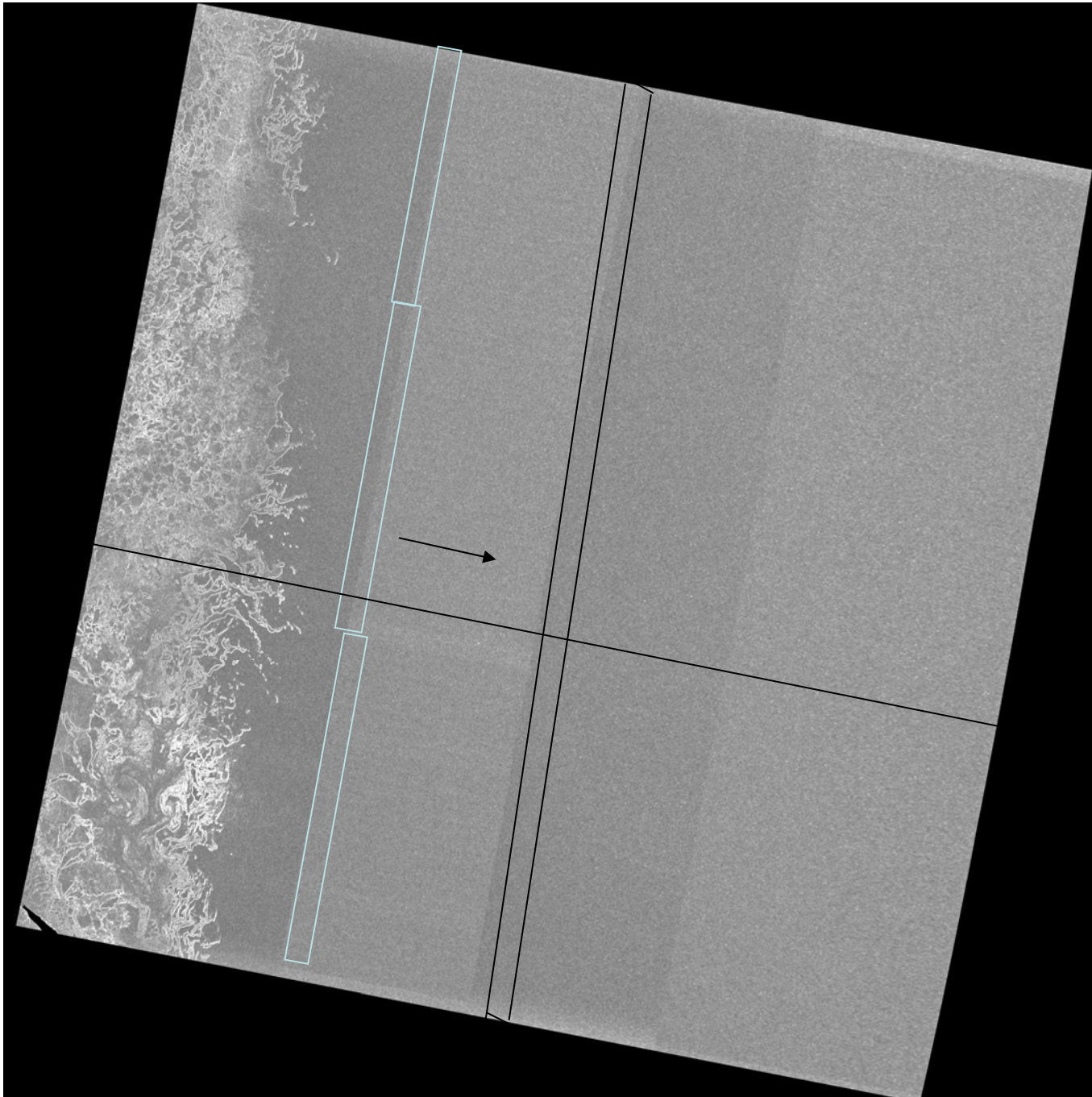
However, all processed data were not visually checked. When any noise confirmed, please let us know.

# SCANSAR

Beam 2~5 sometime saturated.

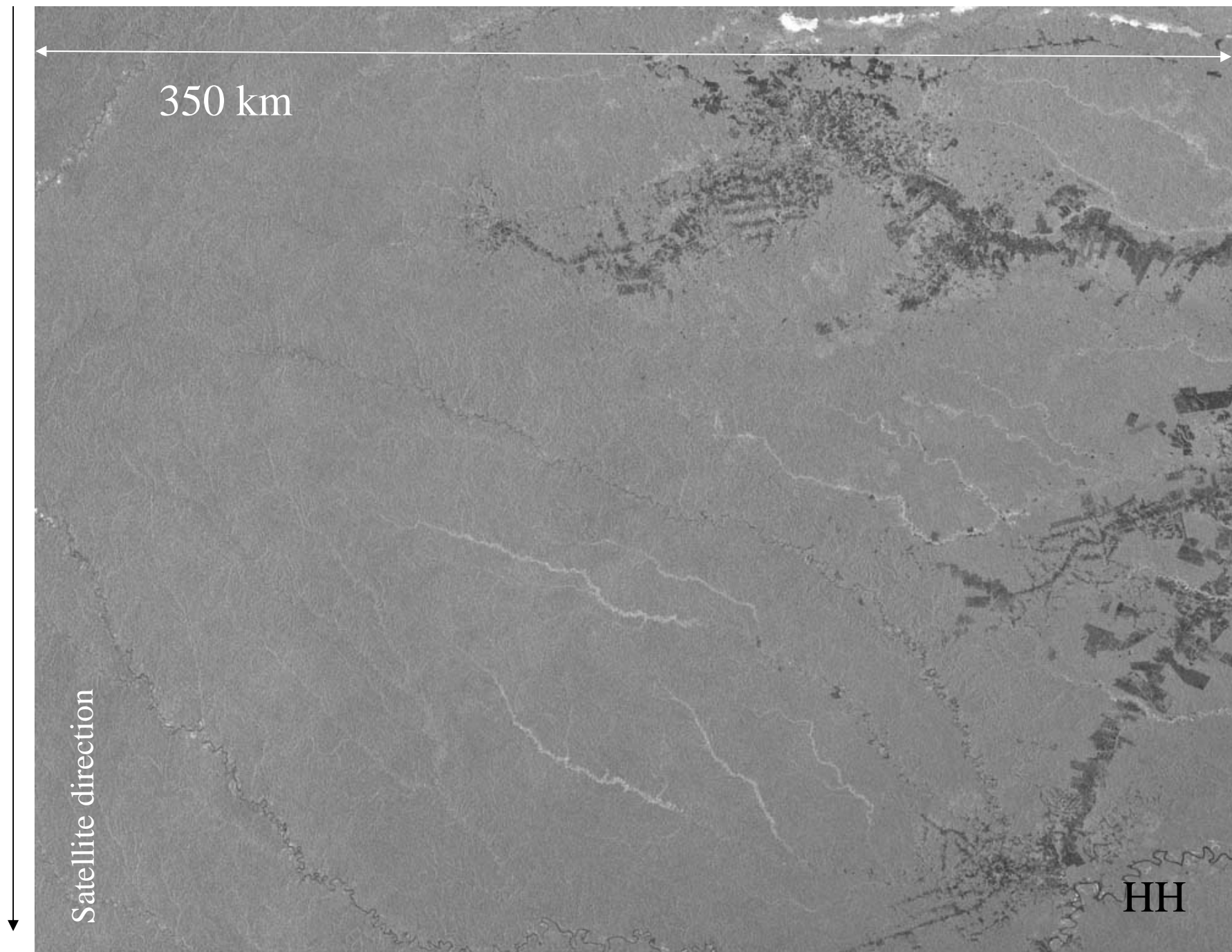
-> azimuth noises appear.





PRF1

PRF2

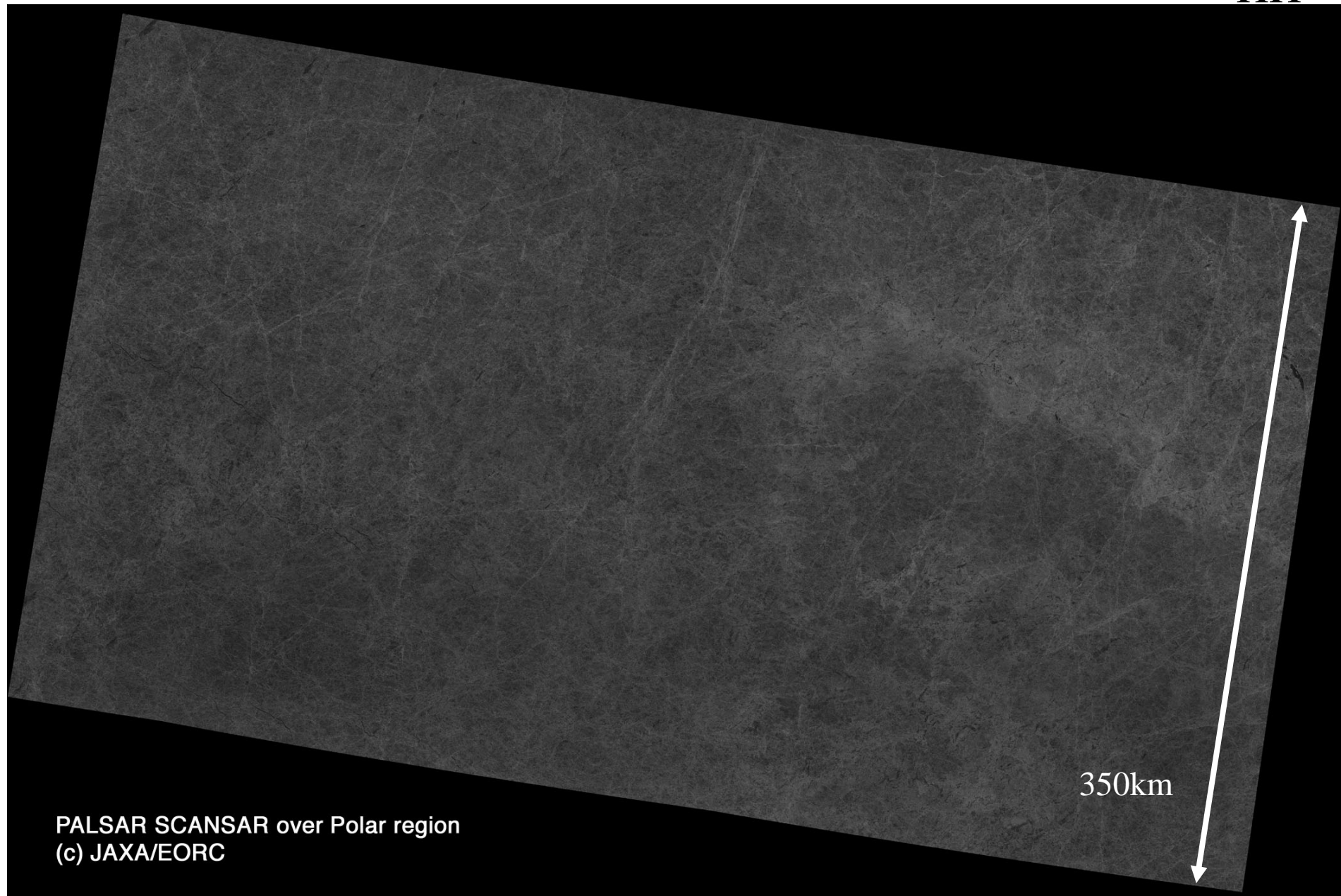


SCANSAR image using the updated antenna pattern and scan-to-scan normalization factors



SCANSAR images: Polar region observed on April 25 2006

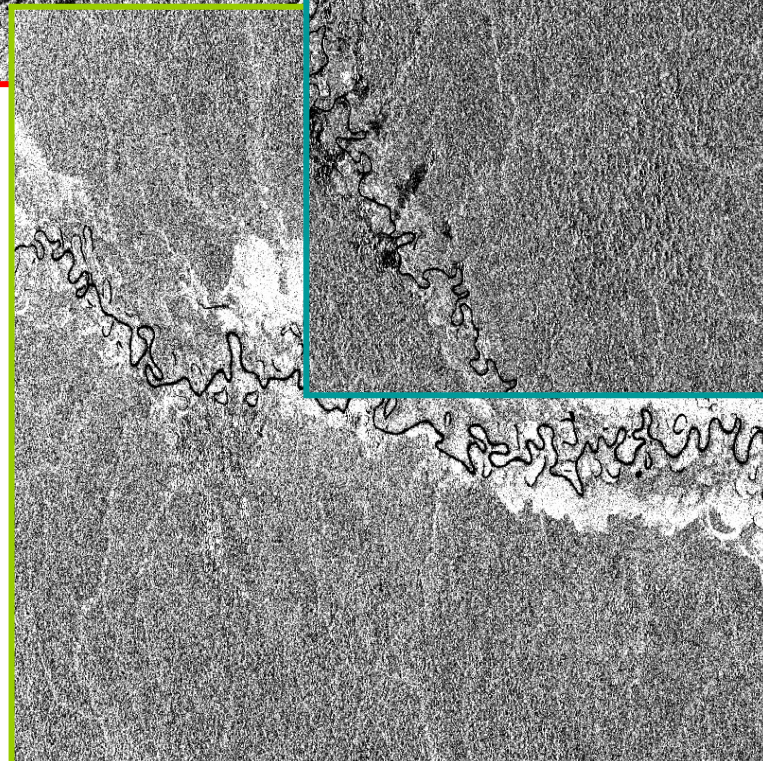
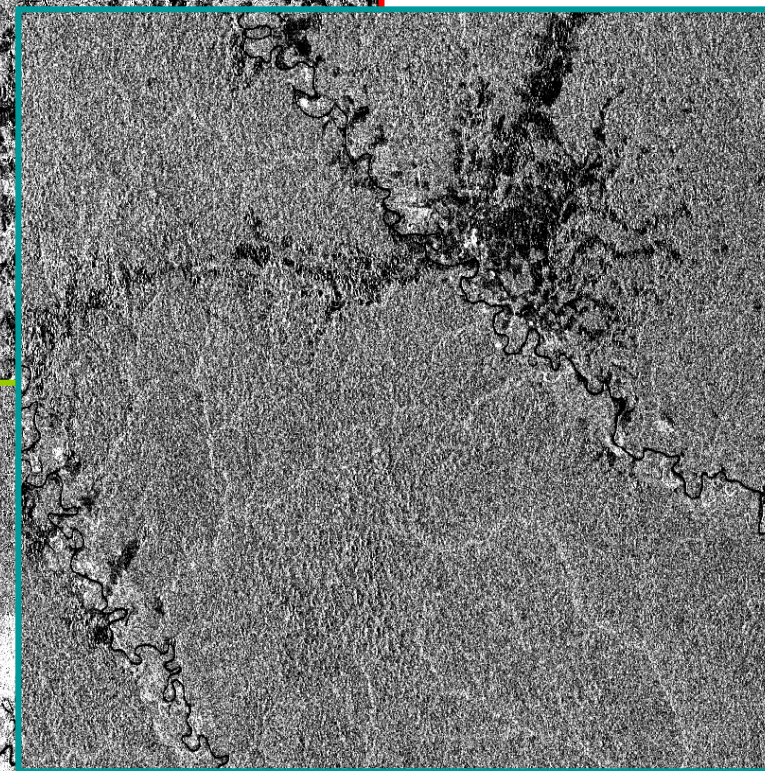
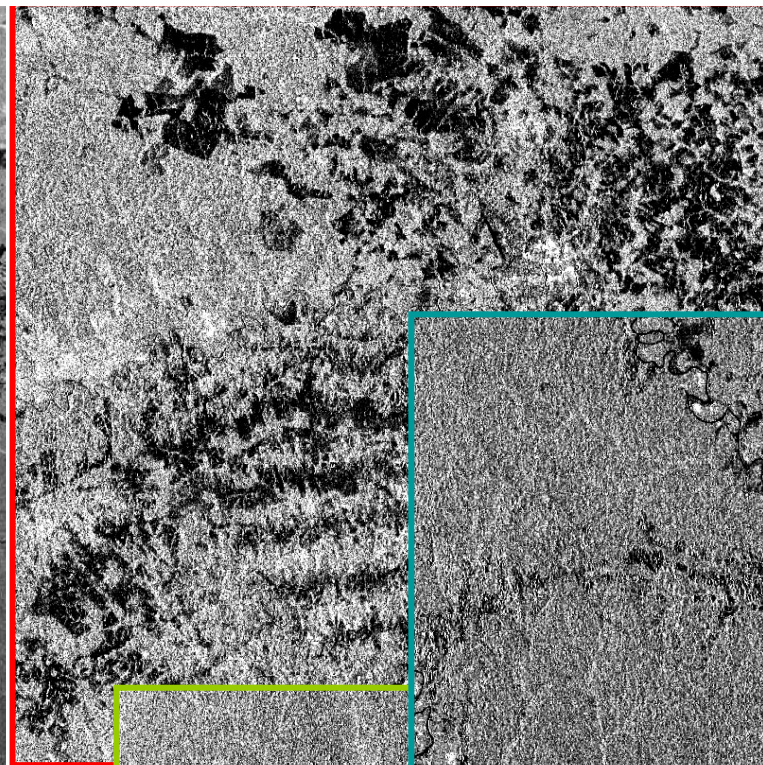
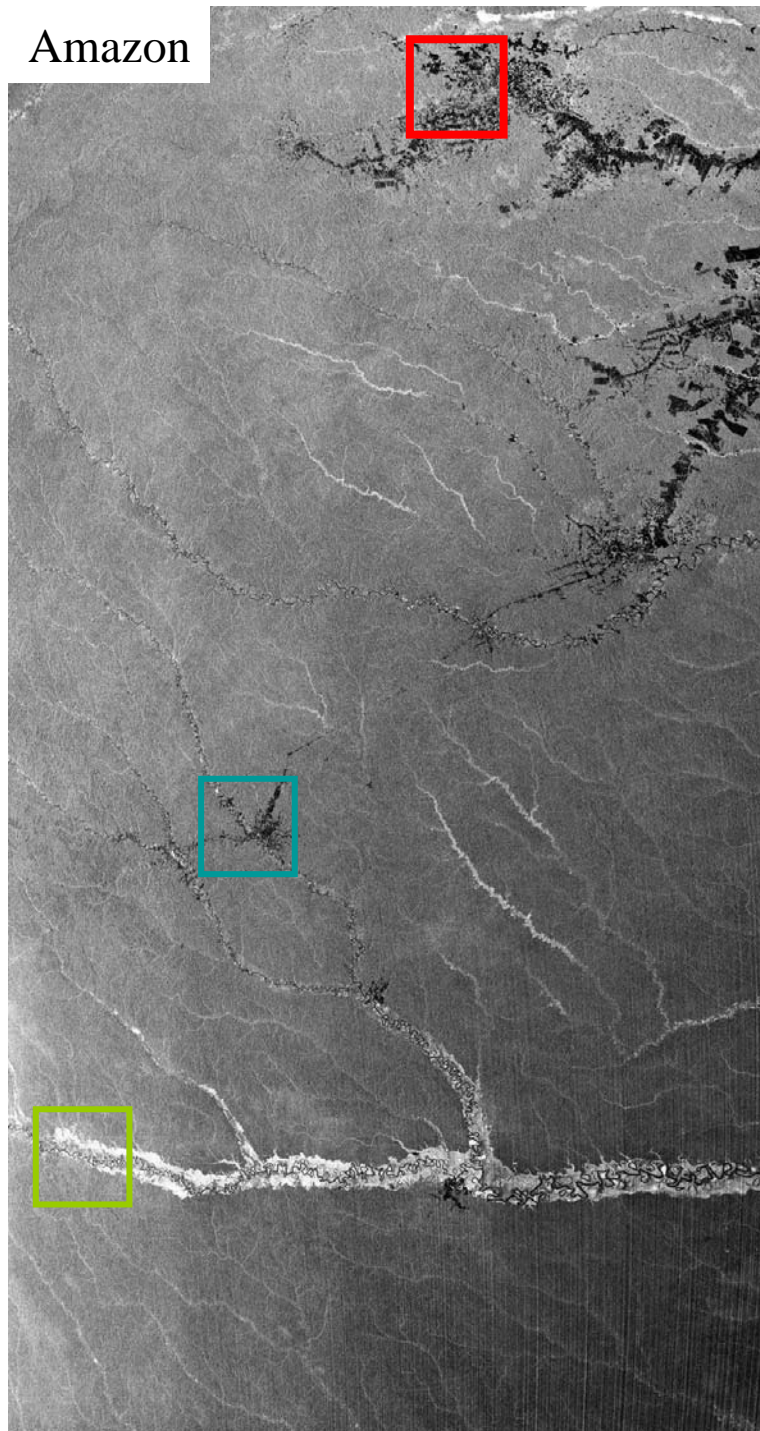
HH



PALSAR SCANSAR over Polar region  
(c) JAXA/EORC



Amazon



HH



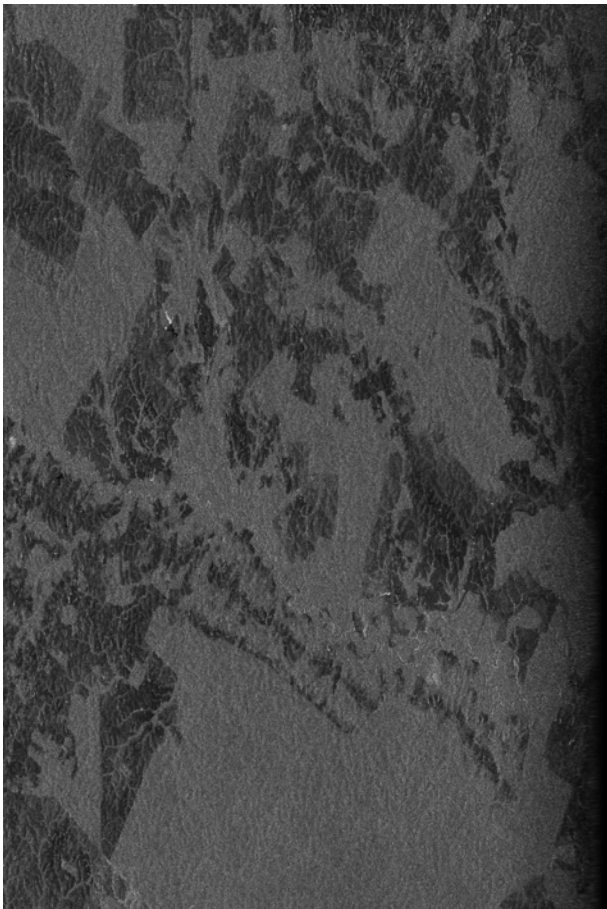
PollnSAR at Rio Branco, Brazil

Four acquisitions July ~ Nov. 2006 every 46 days

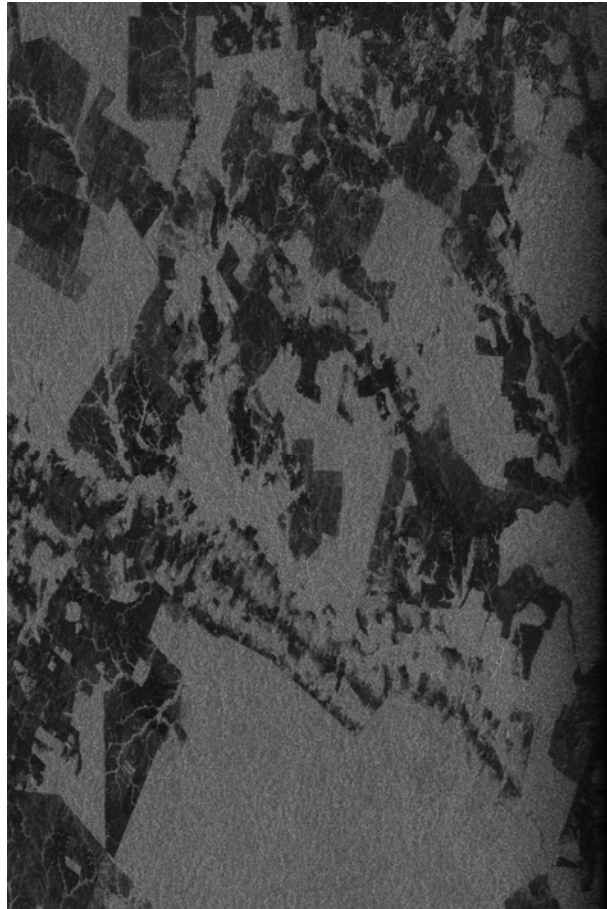
Ascending and descending

Joint experiment among JAXA, ASF, IBGE

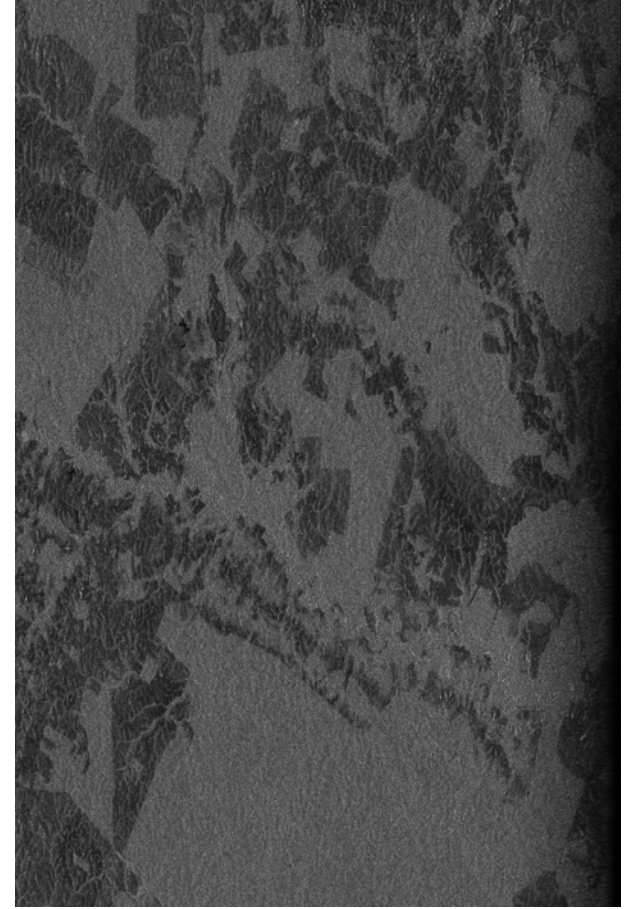
Purpose: Calibration, PolinSAR, Polarimetry, InSAR



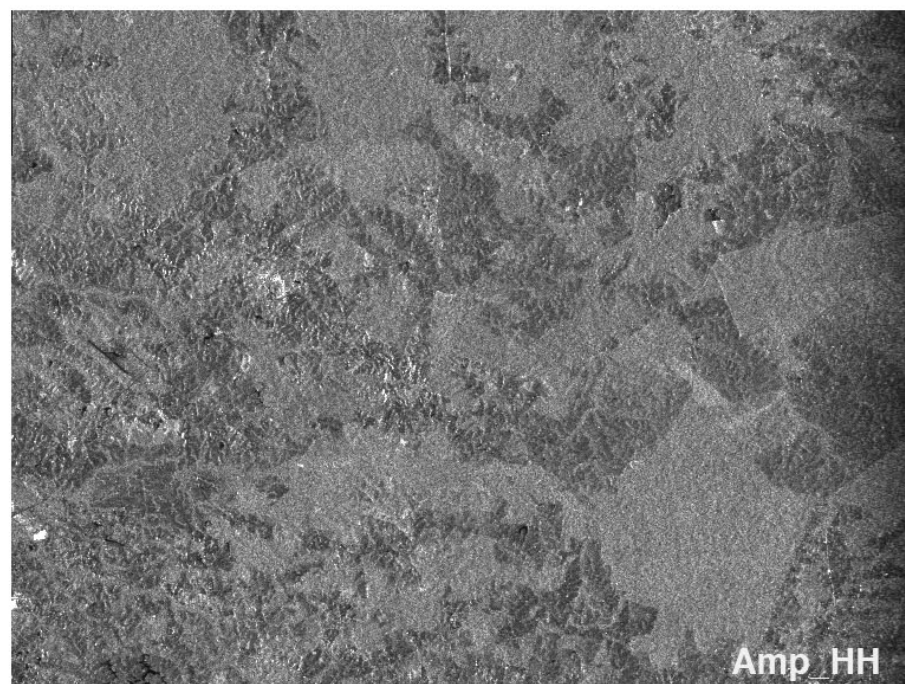
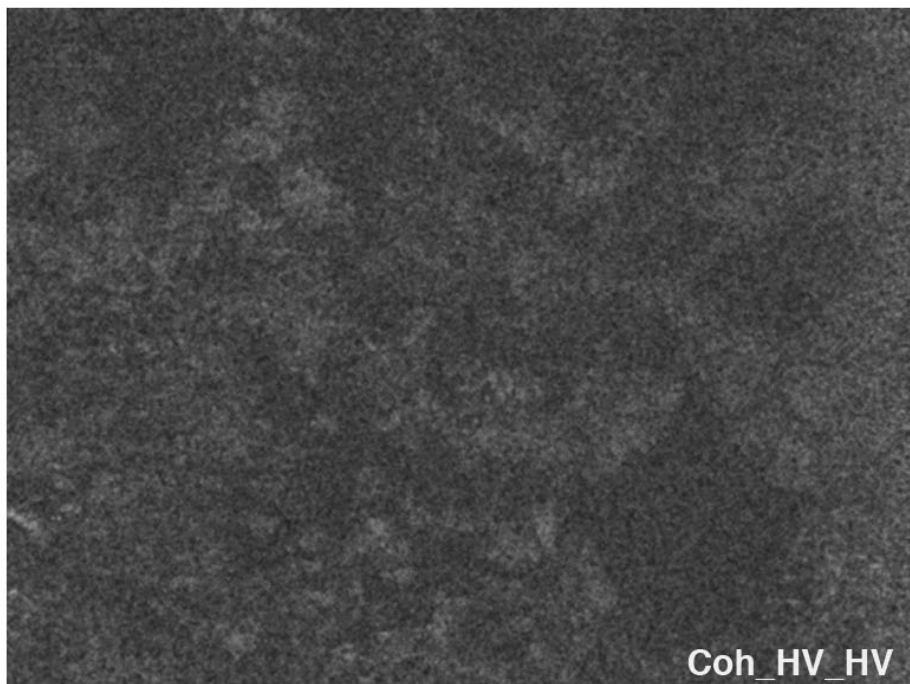
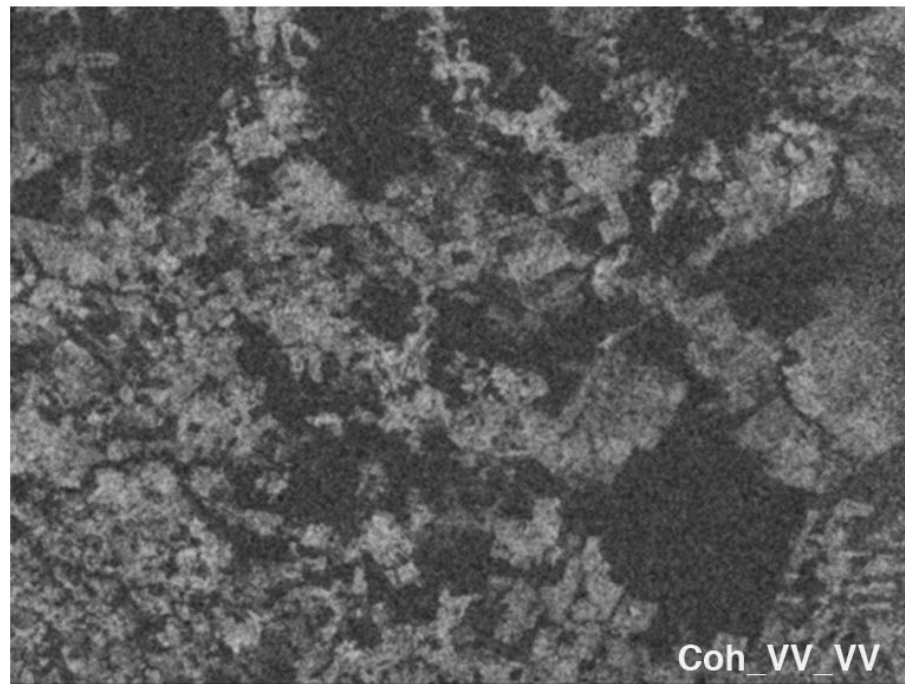
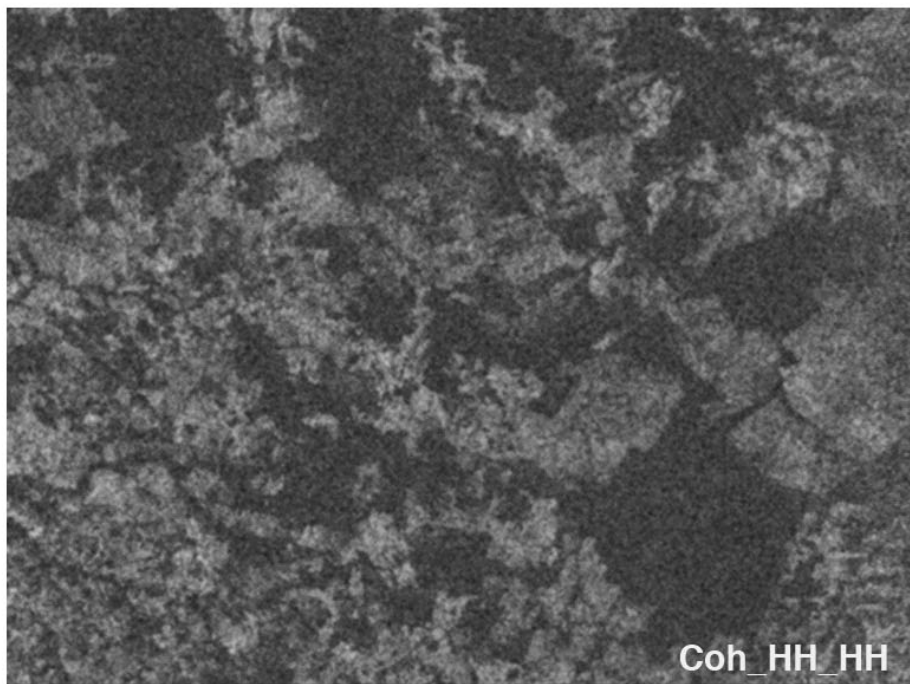
HH



HV



VV





Freeman  
Target  
Decomposition

