

K&C 19, Phase 3:

Characterization of wetlands in Ethiopia and Sudan

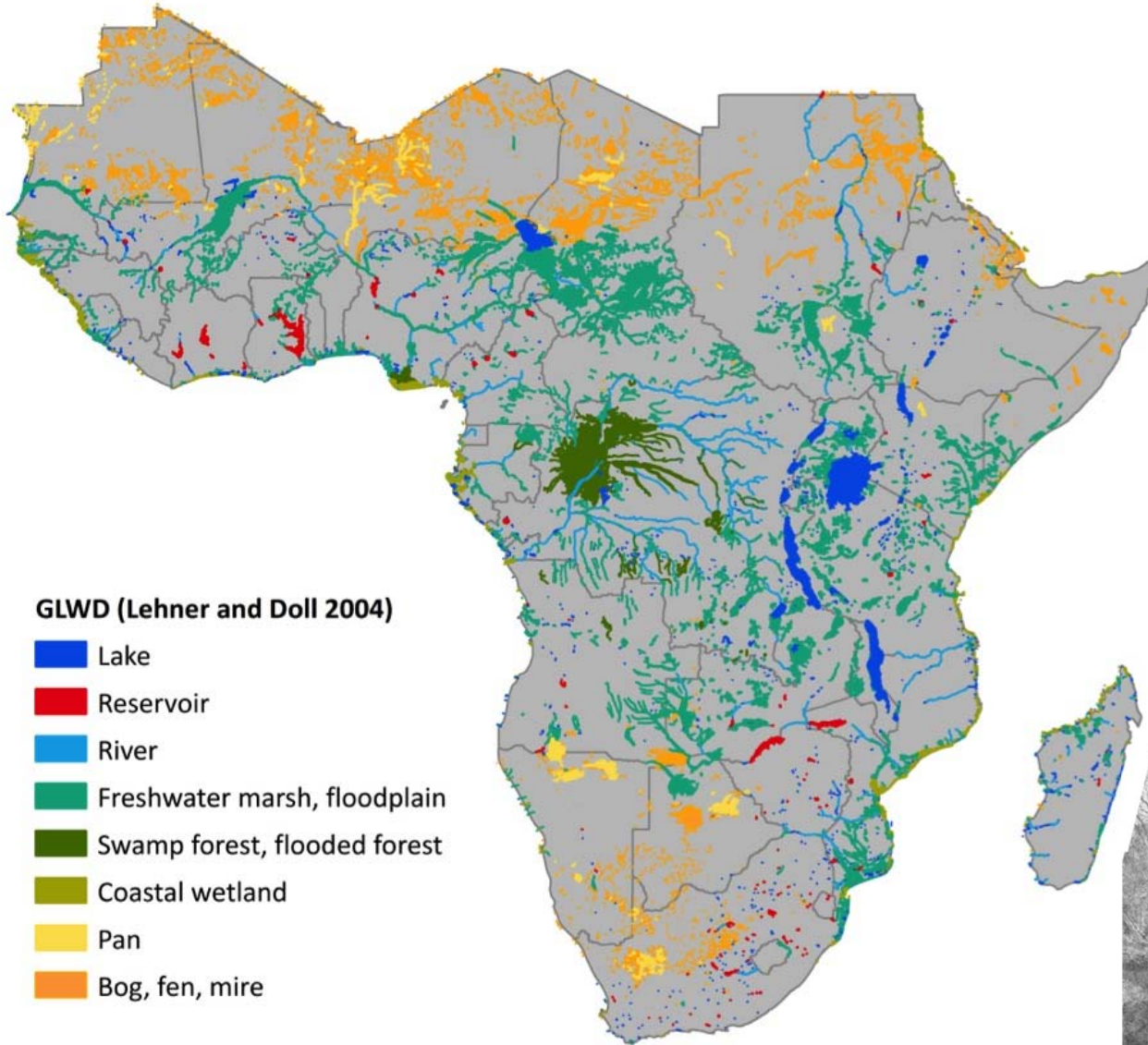
Lisa-Maria Rebelo

*International Water Management Institute (IWMI)
Regional office for South East Asia and the Mekong
Vientiane, LAOS*

ALOS

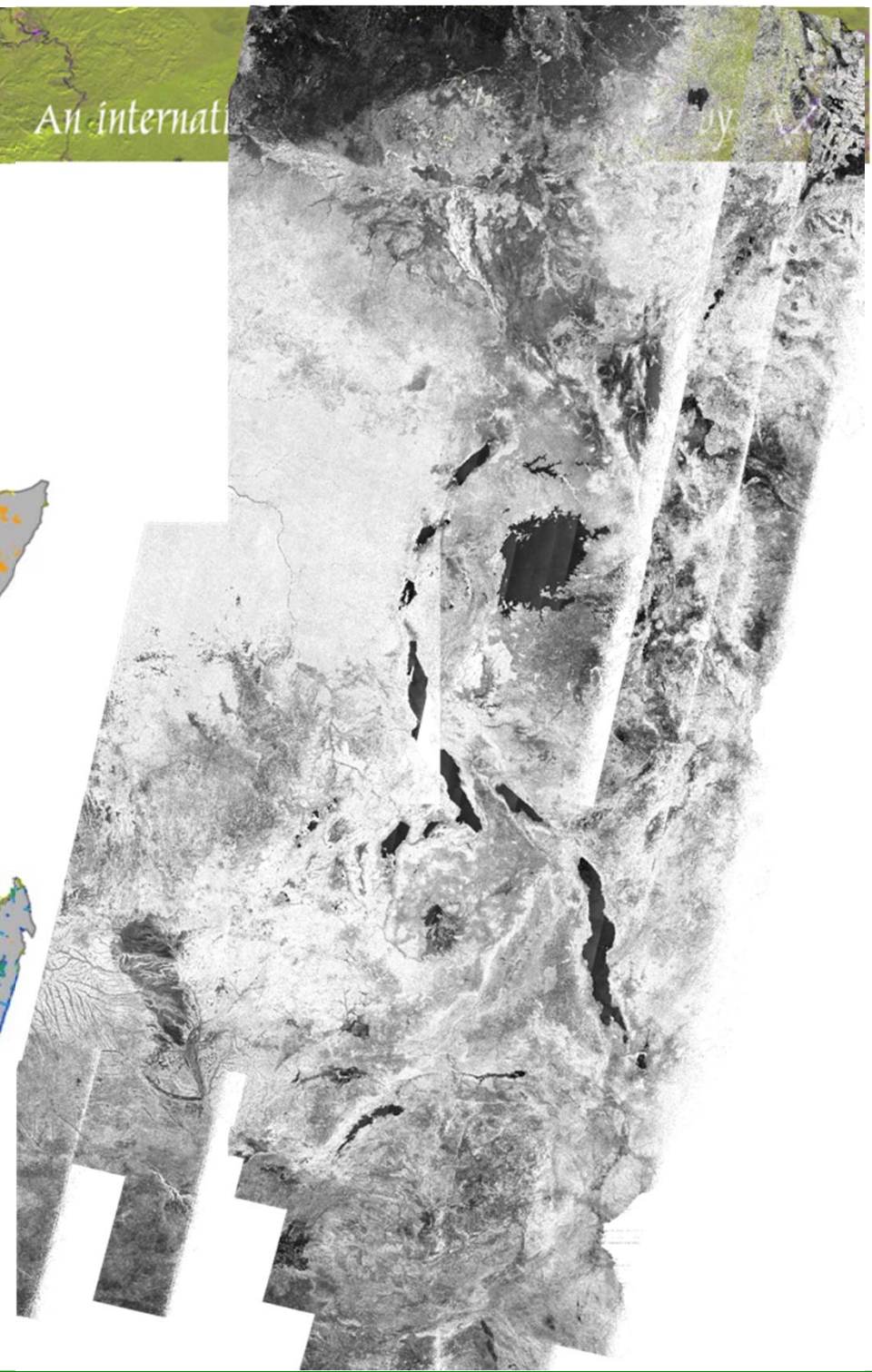
An international

by



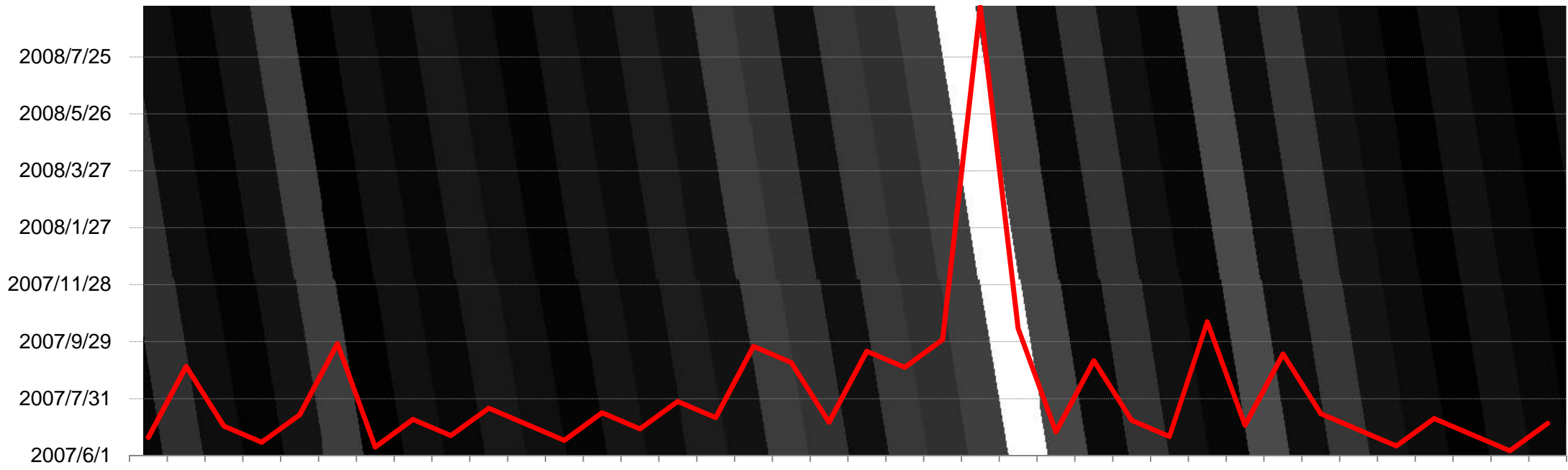
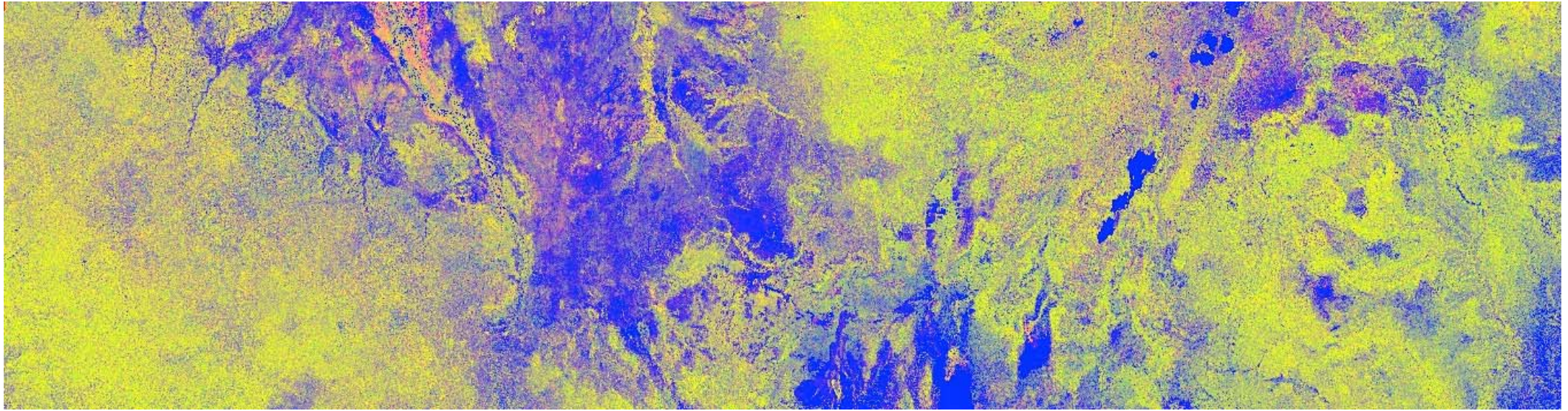
GLWD (Lehner and Doll 2004)

-  Lake
-  Reservoir
-  River
-  Freshwater marsh, floodplain
-  Swamp forest, flooded forest
-  Coastal wetland
-  Pan
-  Bog, fen, mire

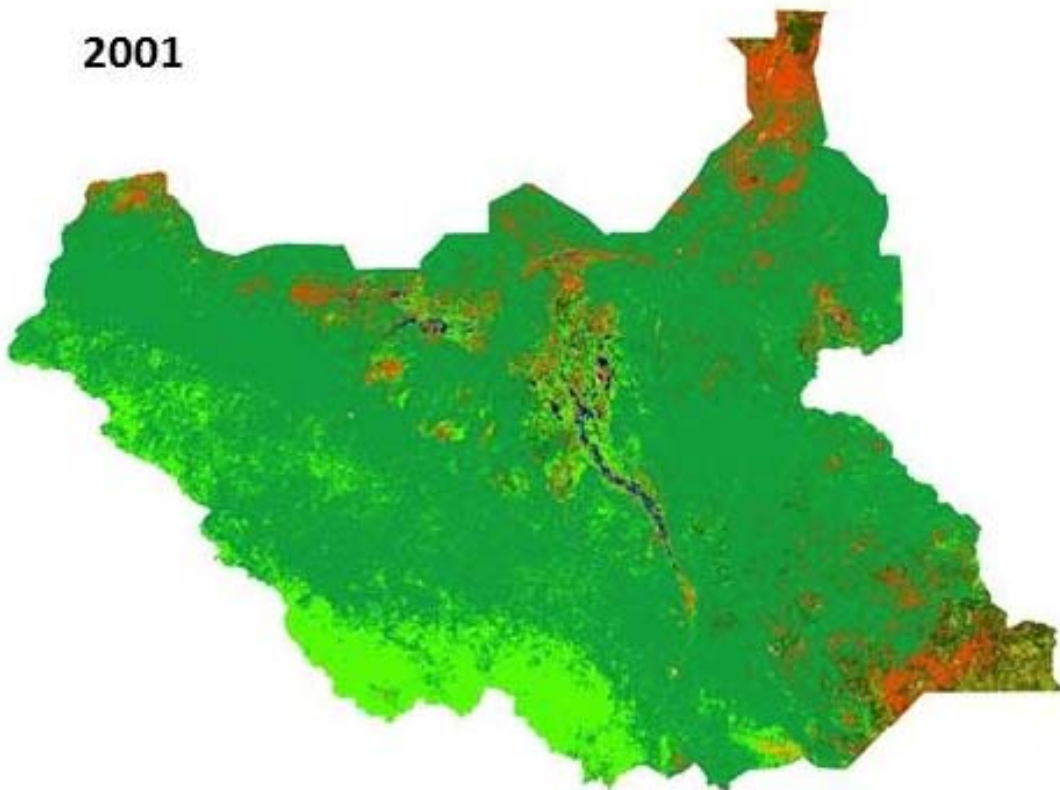


ALOS

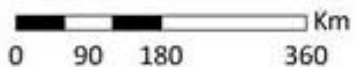
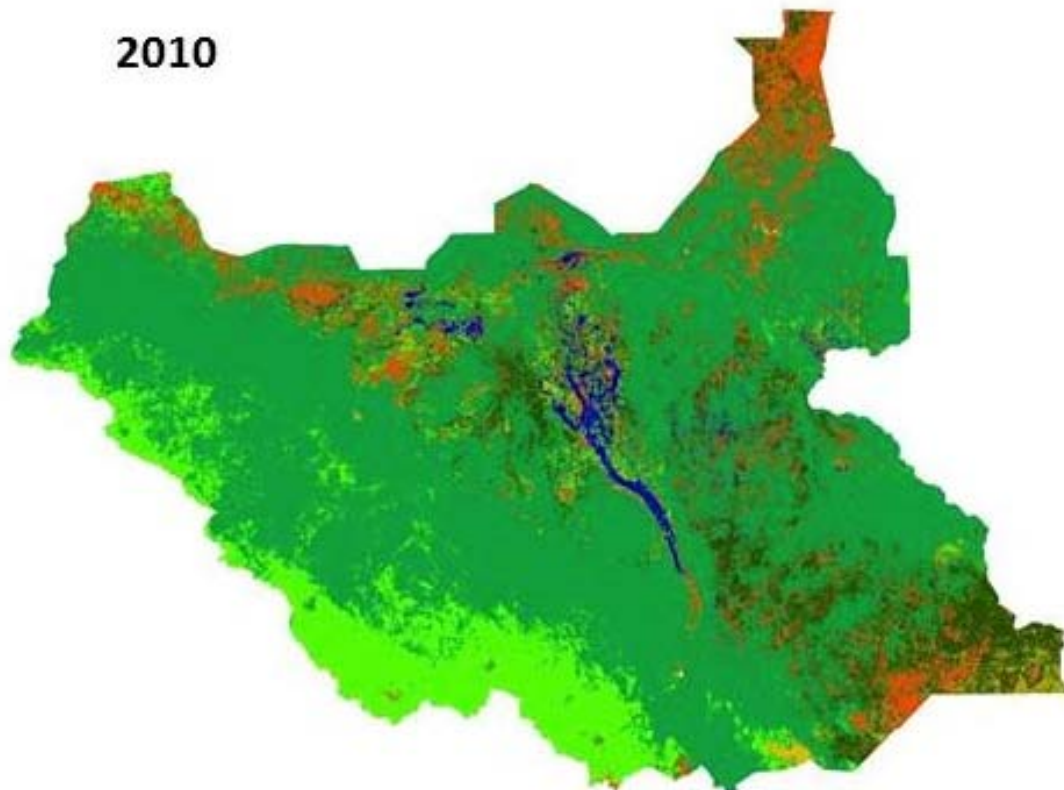
K&C Initiative
An international science collaboration led by JAXA



2001



2010

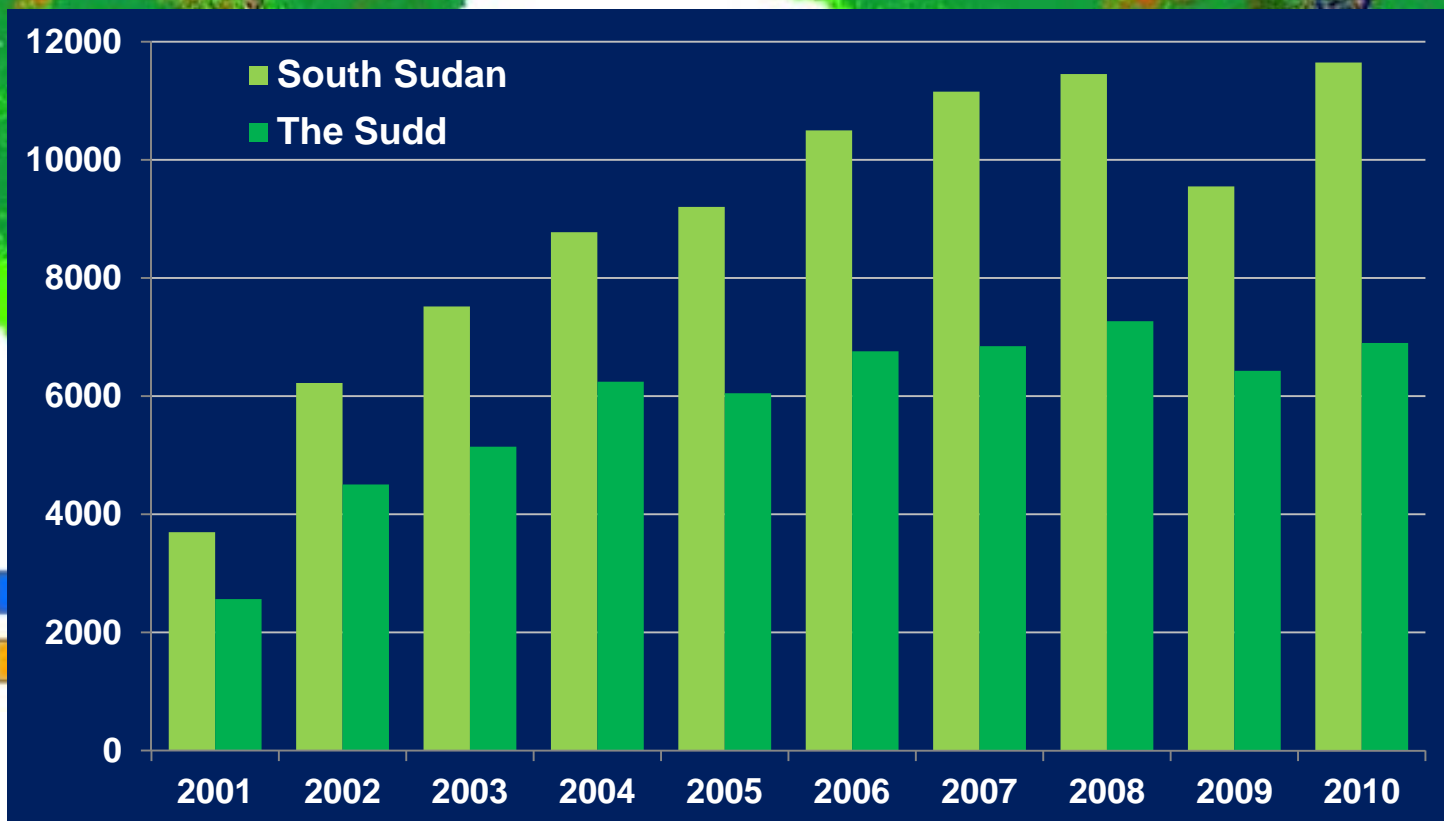
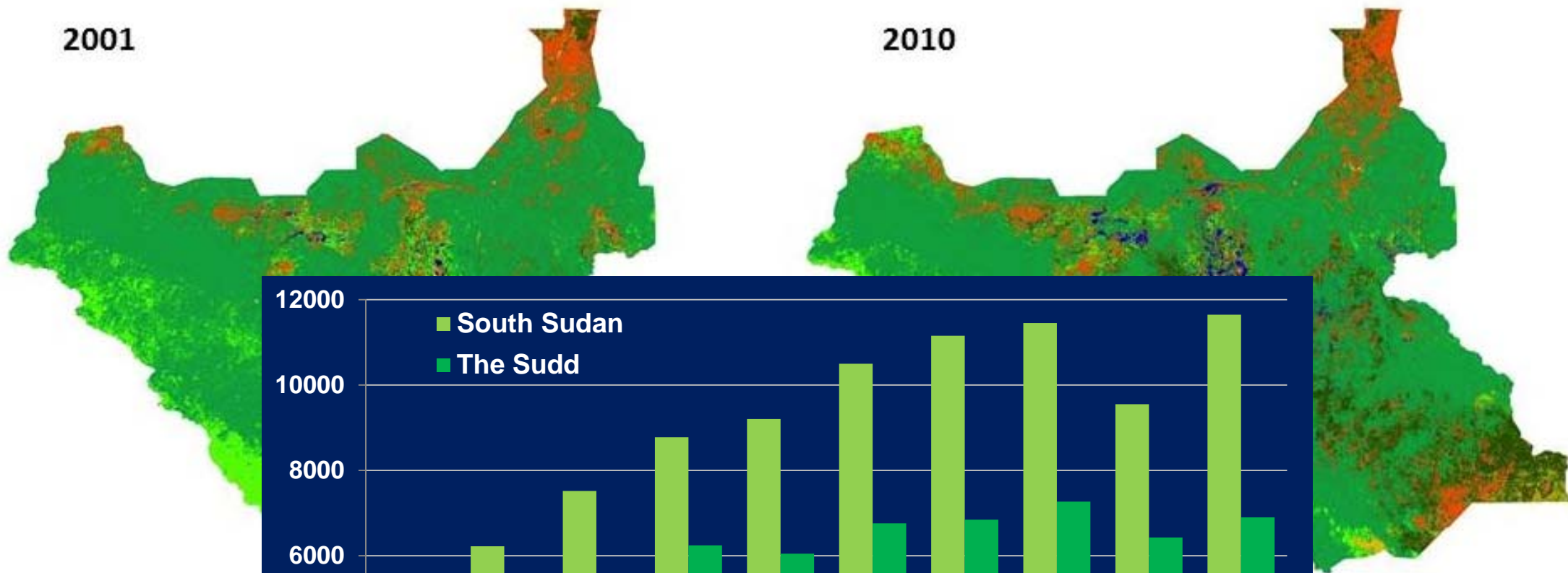


ALOS

K&C Initiative
An international science collaboration led by JAXA

2001

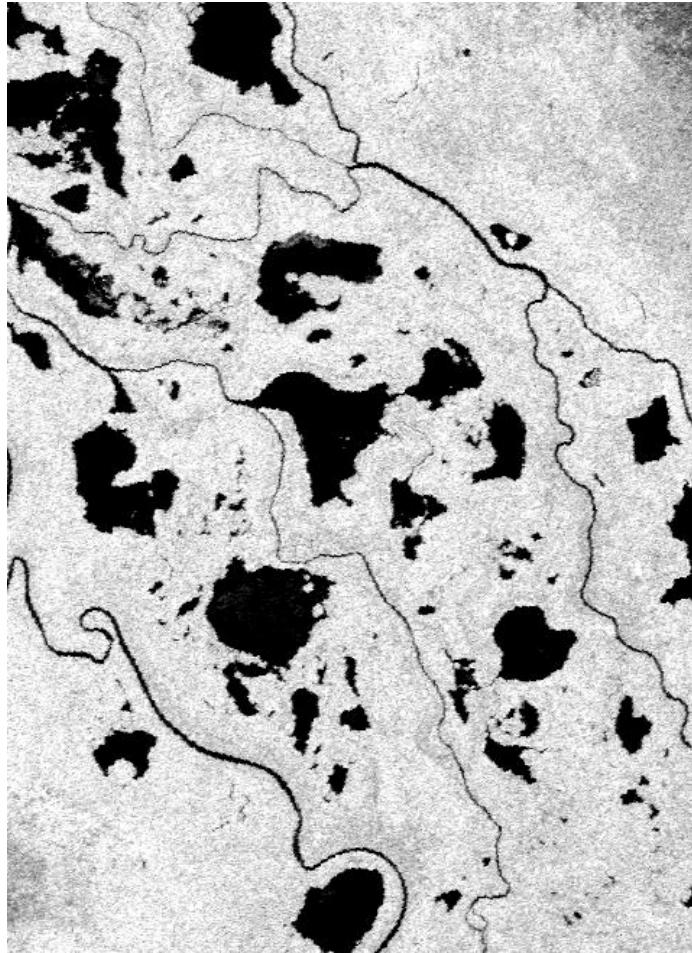
2010



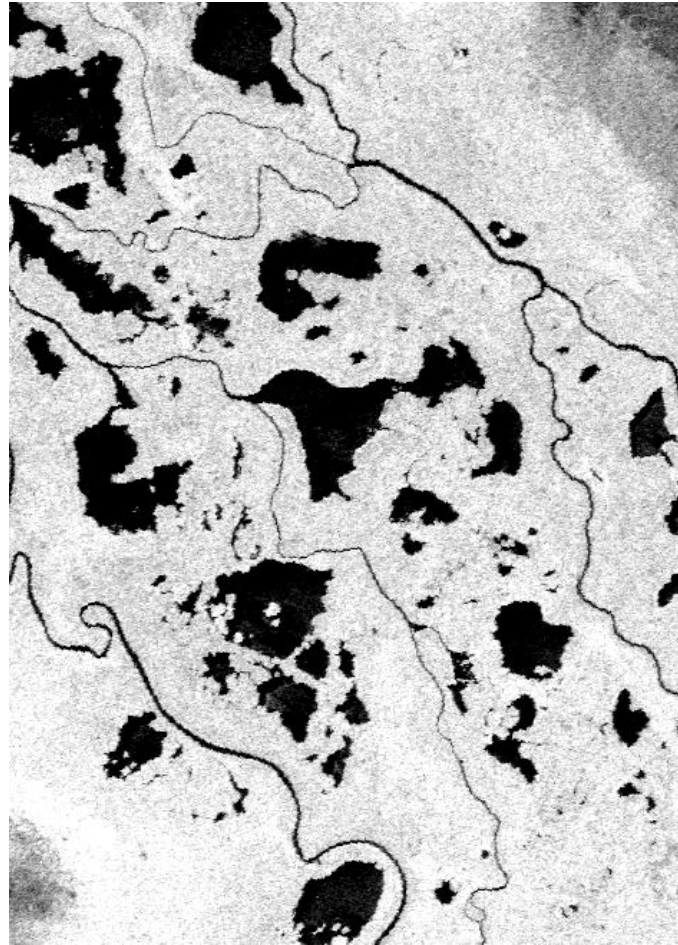
cropland

ALOS

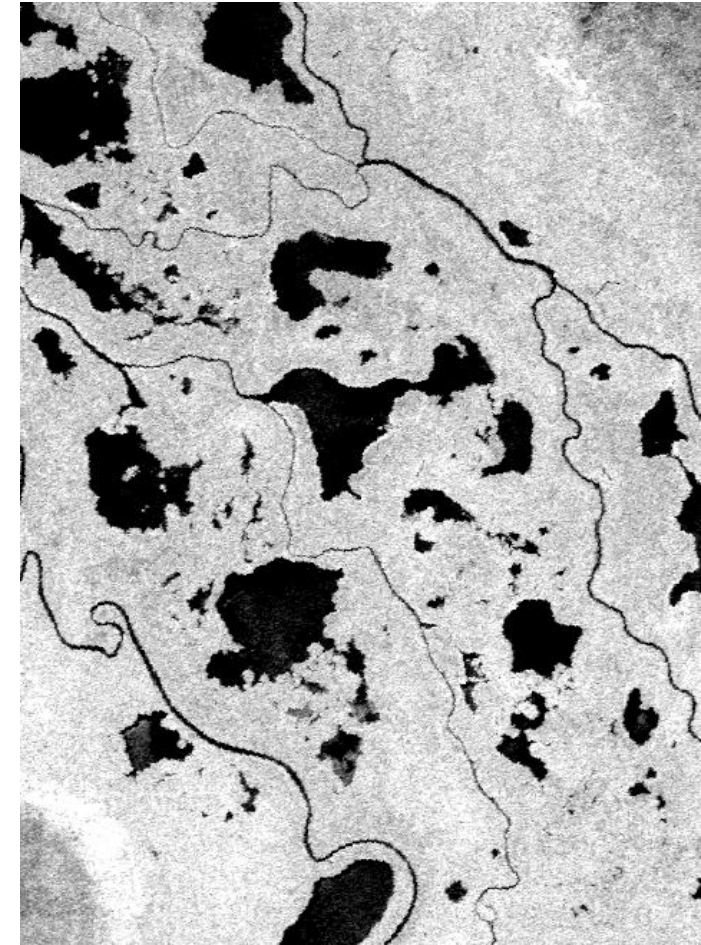
K&C Initiative
An international science collaboration led by JAXA



28/07/2007



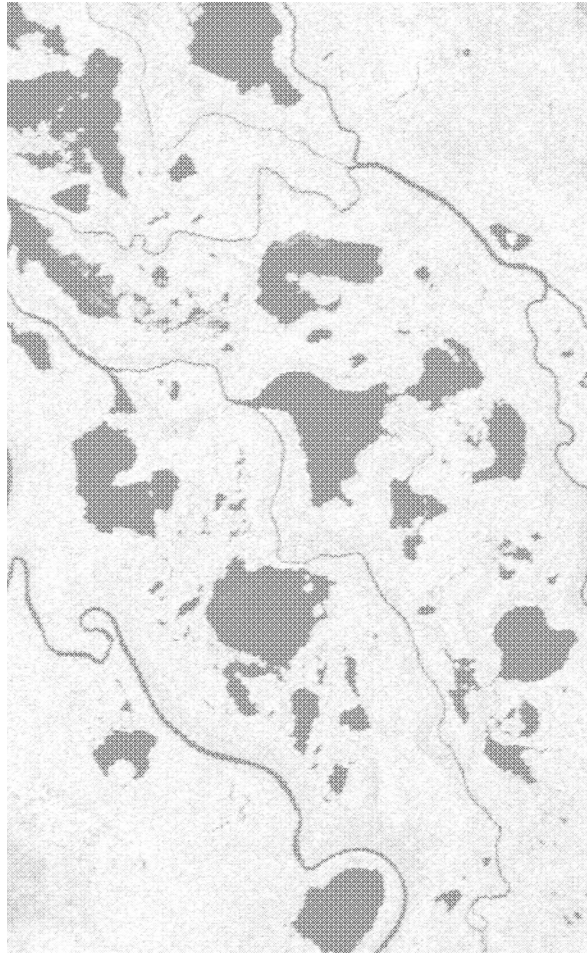
16/05/2008
30/07/2008



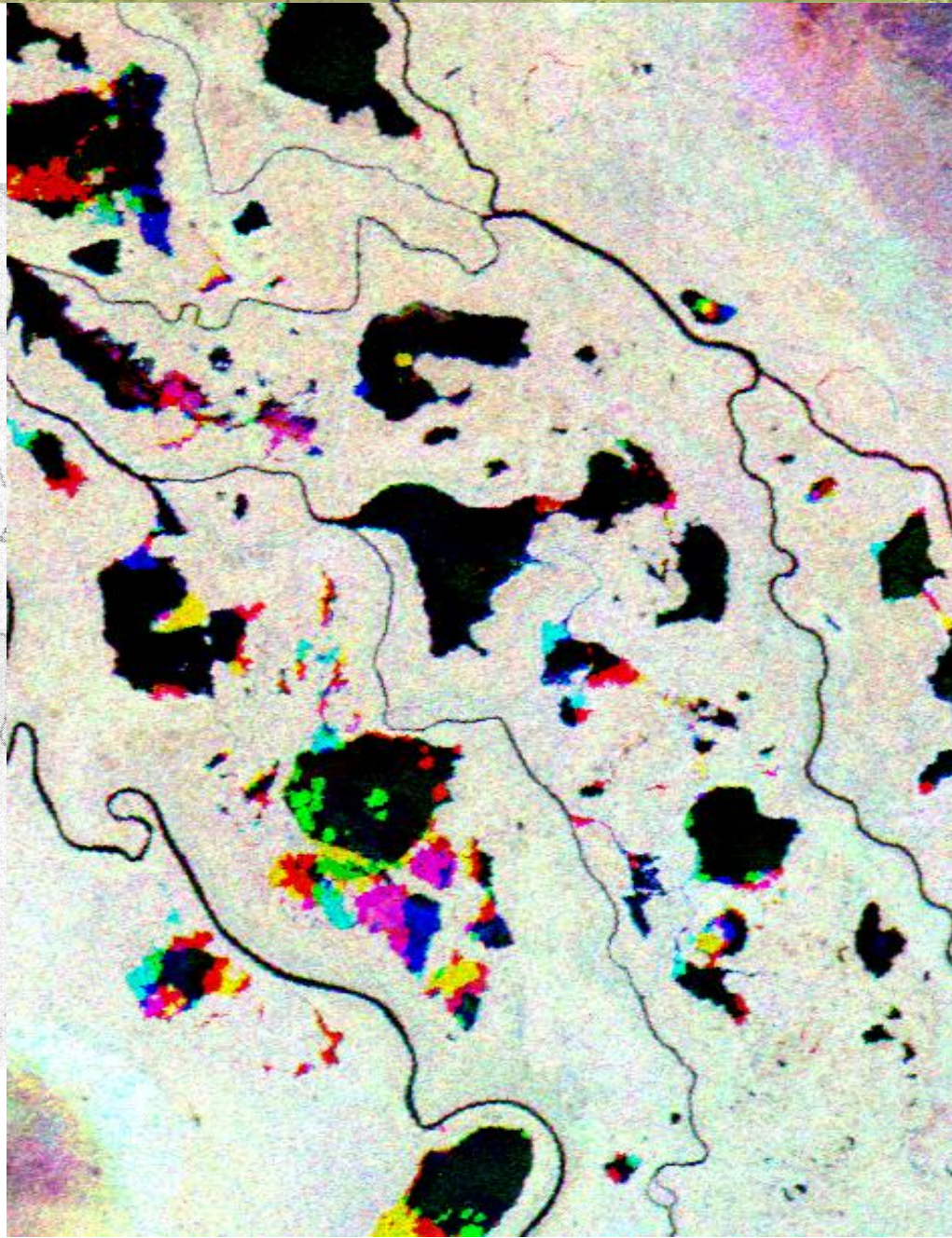
10/04/2009
08/02/2009

ALOS

K&C Initiative
An international science collaboration led by JAXA

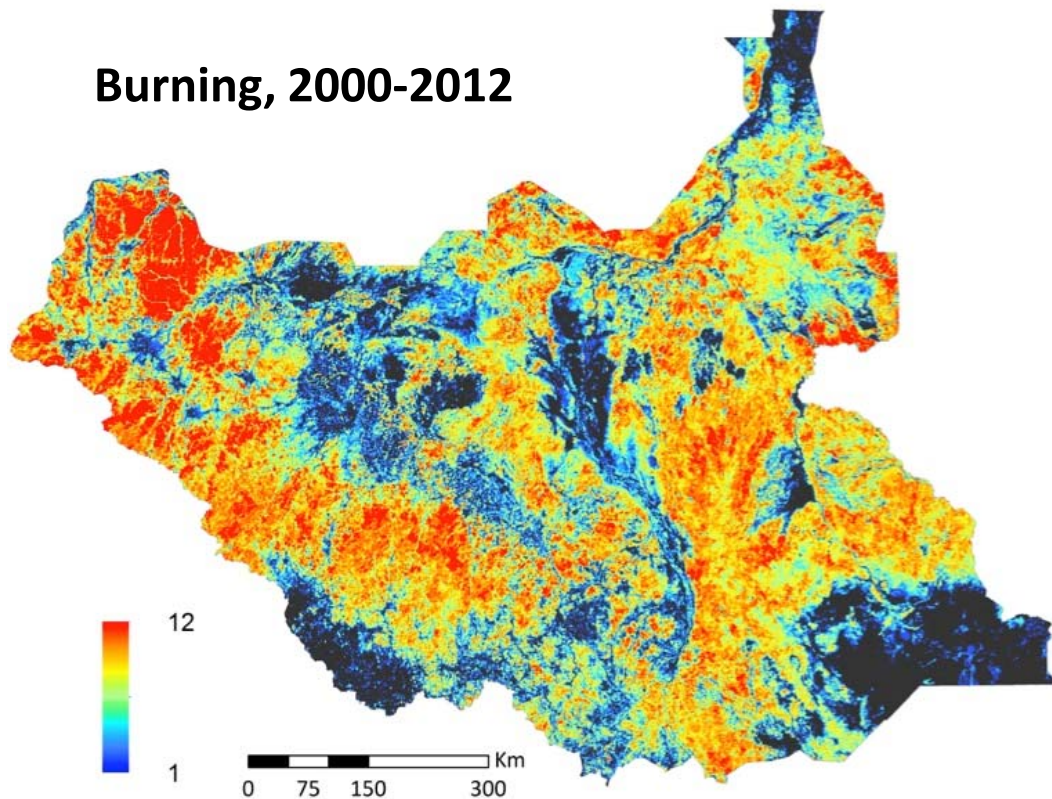


28/07/2007

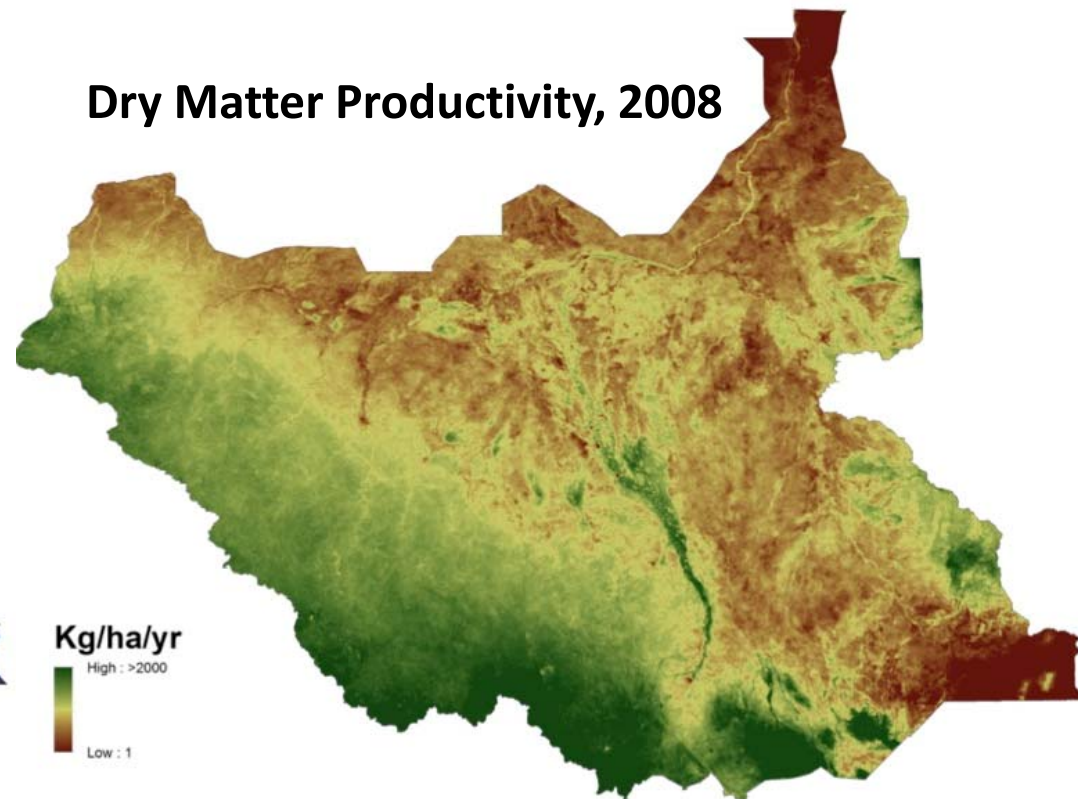


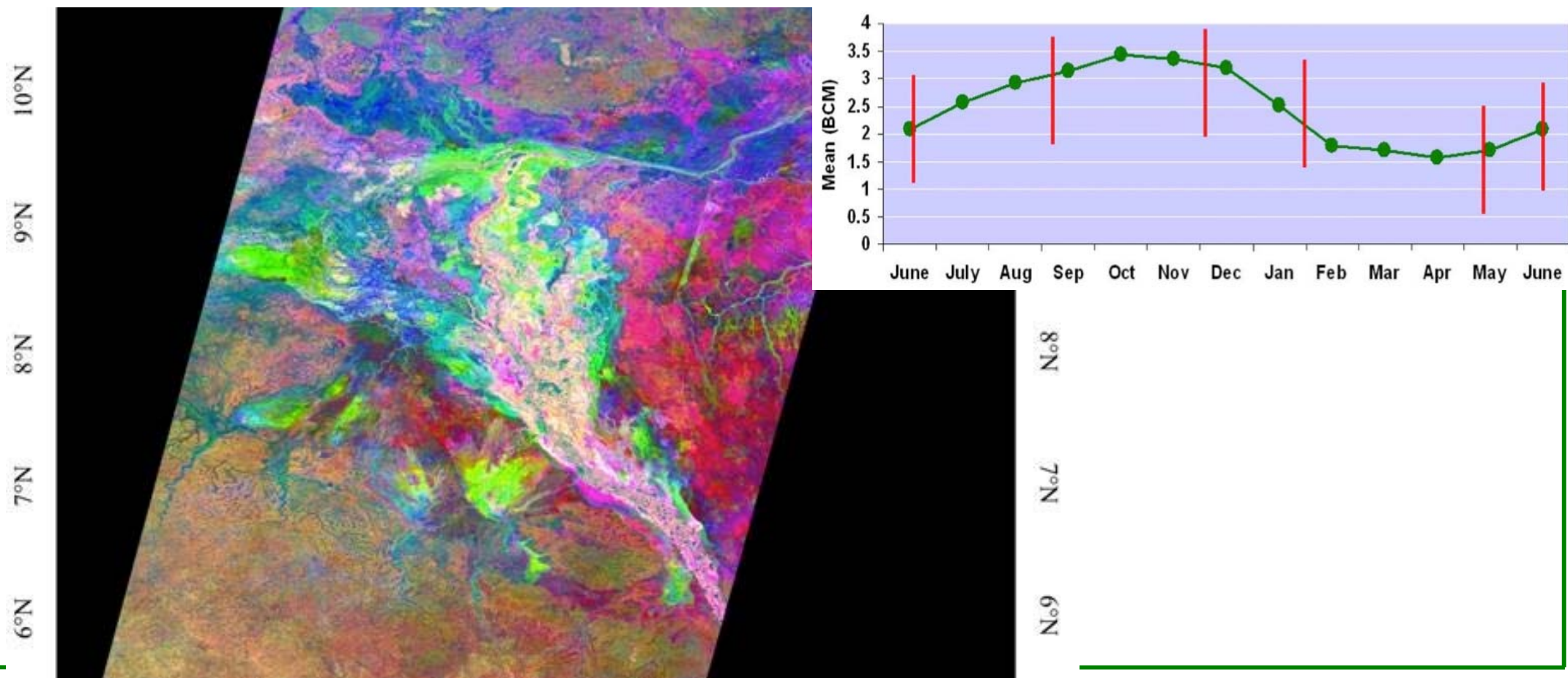
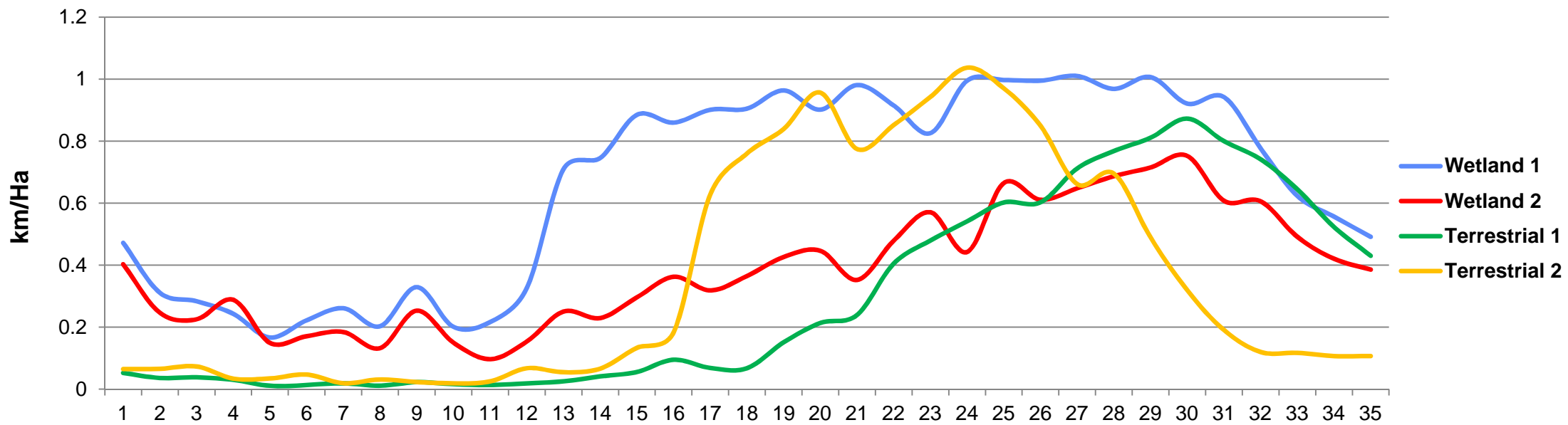
10/04/2009
08/02/2009

Burning, 2000-2012



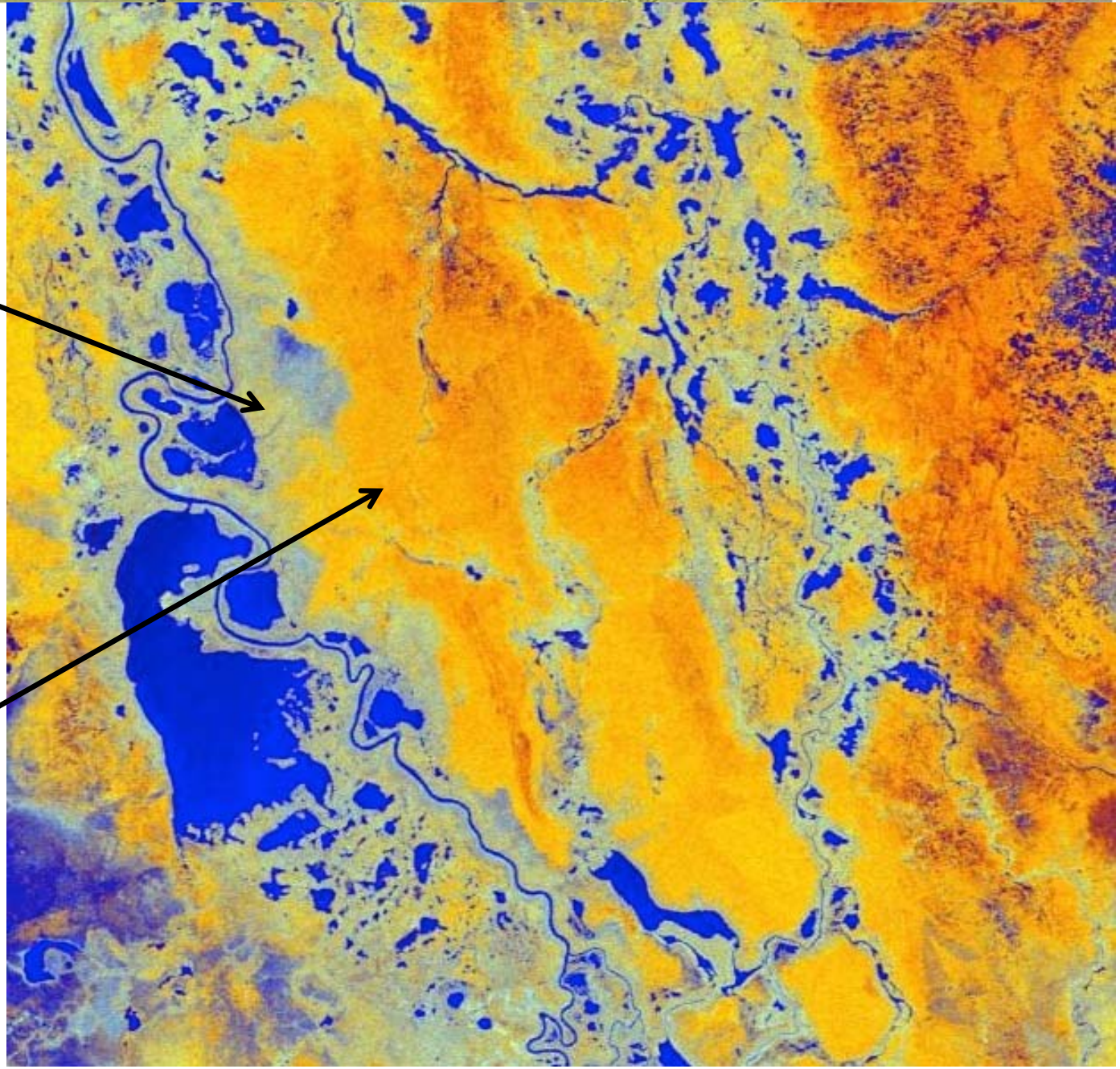
Dry Matter Productivity, 2008

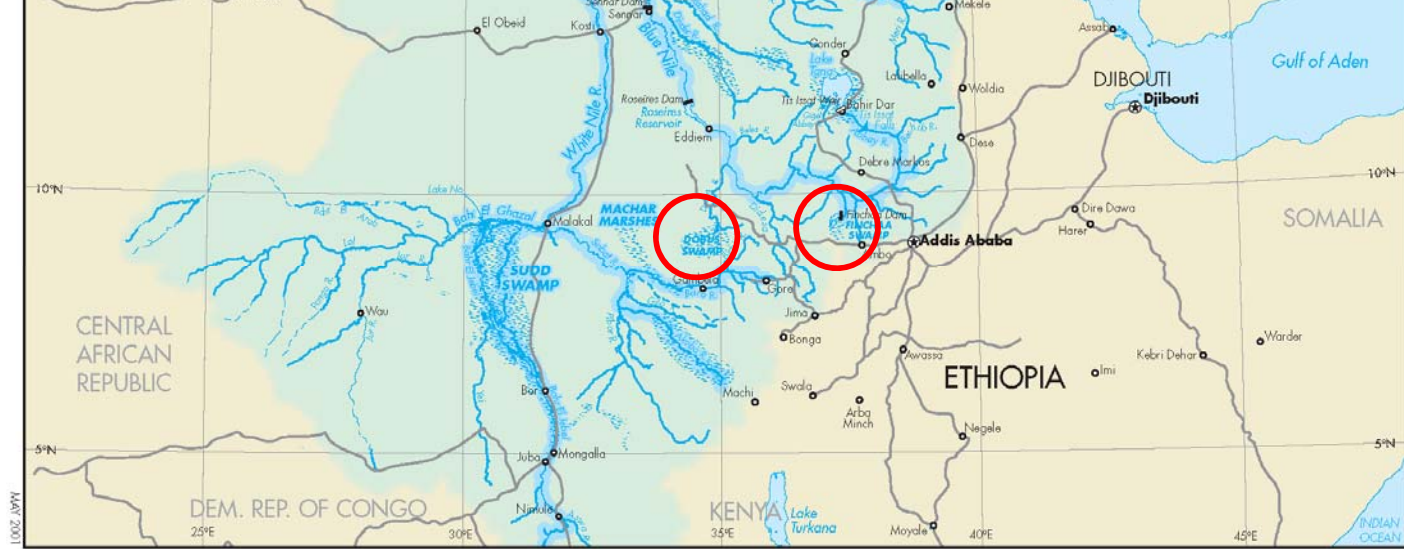
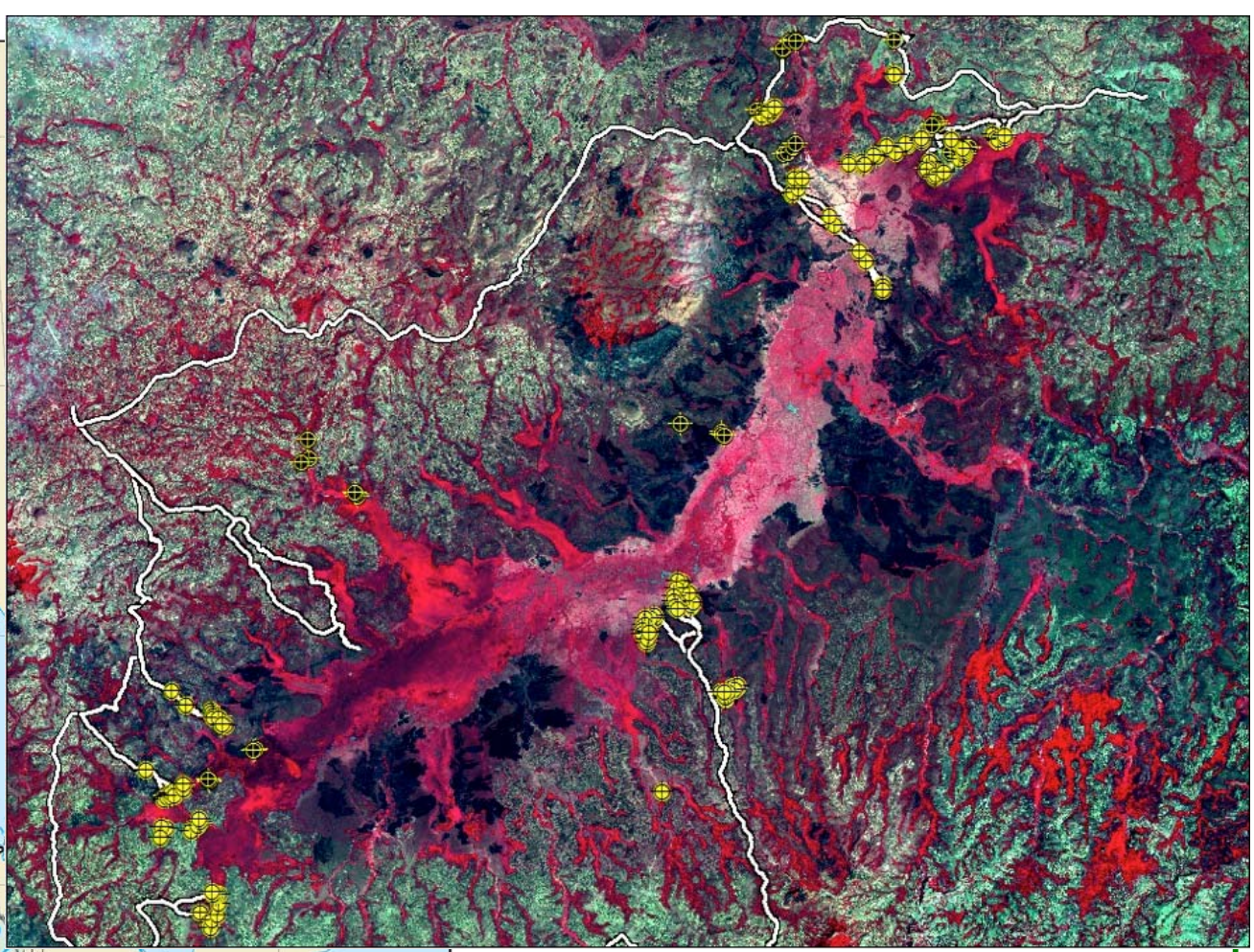


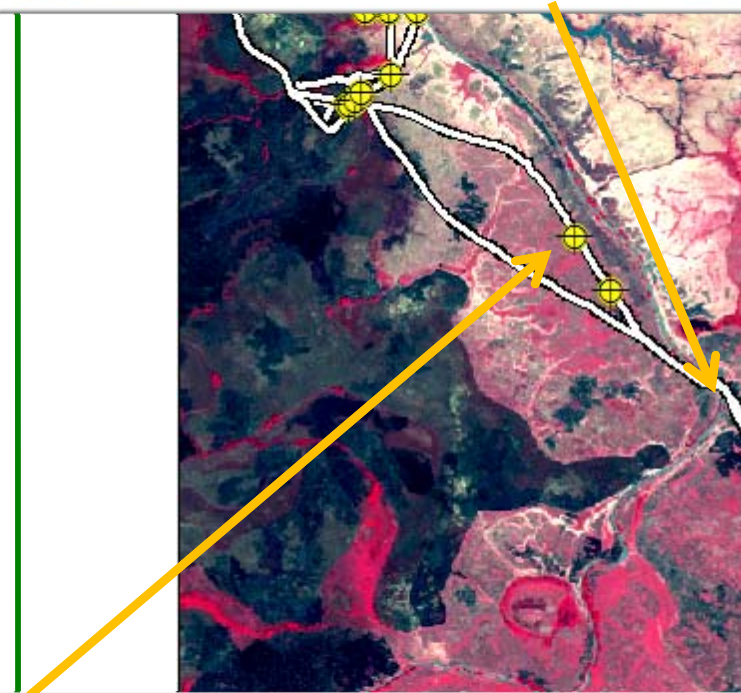
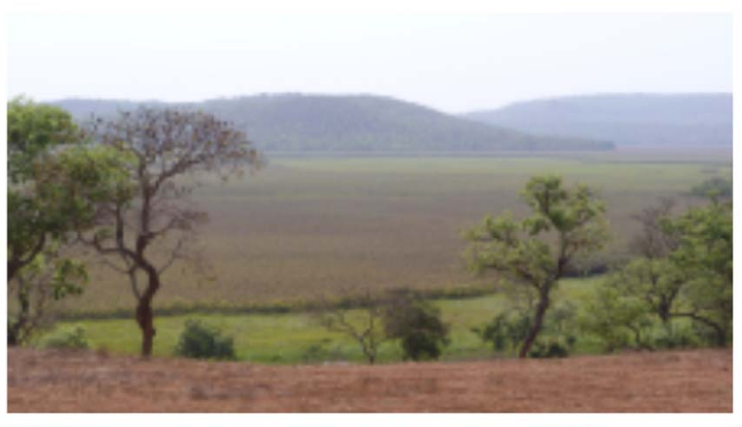


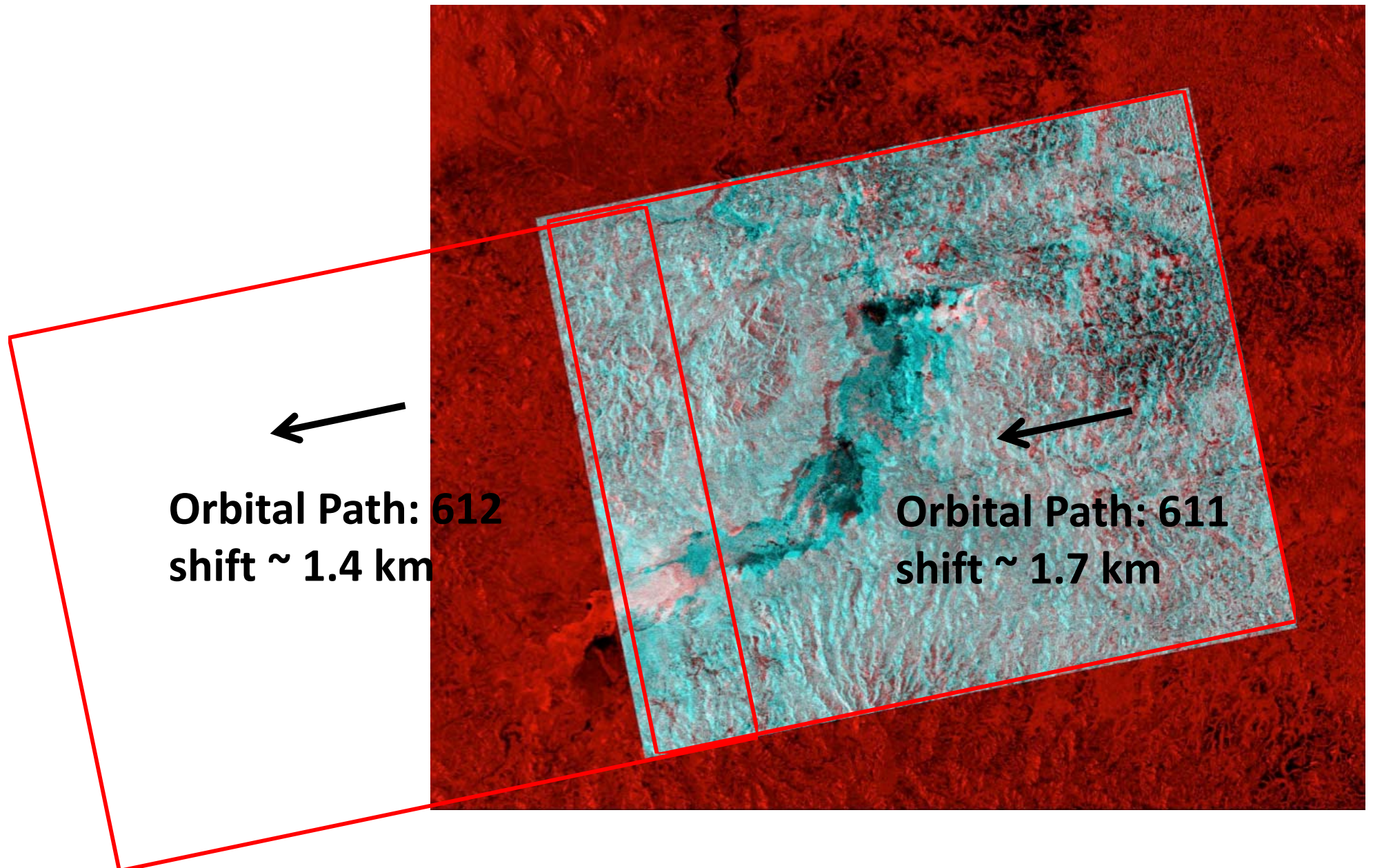
ALOS

K&C Initiative
An international science collaboration led by JAXA









Project objectives

Project objectives:

- Mapping regional scale patterns of flooding and inundation
- Characterization of individual wetland ecosystems

Relevance to the K&C objectives:

- Activities are of direct relevance to the Ramsar **Convention** on wetlands of international importance, and demonstrate the application of L-band SAR for wetland assessment, inventory and monitoring
- The deliverables will provide information required for **conservation** of wetlands

Project deliverables and milestones:

- Maps of
 - Minimum water extent (open water, flooded vegetation)
 - Maximum water extent (open water, flooded vegetation)
 - Seasonal variations in inundation

The logo for the Advanced Land Observing Satellite (ALOS) program, featuring the letters 'ALOS' in a white, serif font against a dark blue background.A banner for the Knowledge and Capacity (K&C) Initiative, featuring a satellite-style map of a river delta in shades of green and blue. The text 'K&C Initiative' is in a white serif font, and 'An international science collaboration led by JAXA' is in a smaller, italicized white serif font below it.

K&C Initiative
An international science collaboration led by JAXA

Thank you!