

*ALOS KYOTO & CARBON INITIATIVE*  
*SCIENCE TEAM NEWSLETTER NO. 1 (FEB. 2007)*

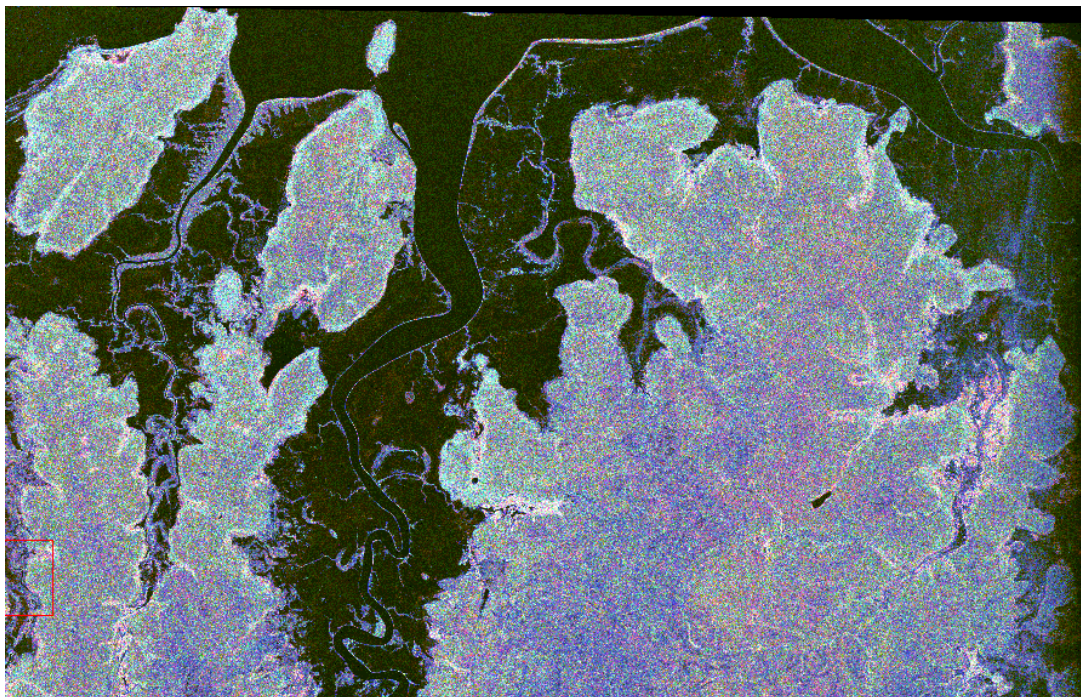


*Dear K&C Science Team members.*

*I am happy to send you the first issue of the K&C Science Team Newsletter. It will be produced on a regular basis and aims to inform K&C Science Team members on the status of ALOS data acquisitions, news on activities within the different themes and general information, partly replacing the emails I send out. The style is informal! I hope you will find it helpful and any feedback is welcome.*

*Best regards,  
Ake Rosenqvist*

[Image of the Month](#)



*ALOS PALSAR image of Kakadu National Park, Australia, acquired on July 3<sup>rd</sup>, 2006. The image shows the mangroves of the Alligator Rivers and inundated forests on the floodplain. In the wetlands theme, PALSAR data are to be used for mapping the extent of mangroves and wetlands.*

### Processing request form updates

Starting with an urgent issue, we all need to revise our request forms, due to the change of the default off-nadir angle of PALSAR from 41.5 to 34.3 degrees. If you do not, the PALSAR strip data processed **may not cover your project areas** properly.

I still have only received updated Processing Request forms from a few of you (UVic, CTCD, sarmap, SarVision, FSU, SLU, Lucas). I still need forms from (Le Toan, Hallikainen, Hess, JPL, Siqueira, Milne, Dalton, Paillou) and so please provide these ASAP.

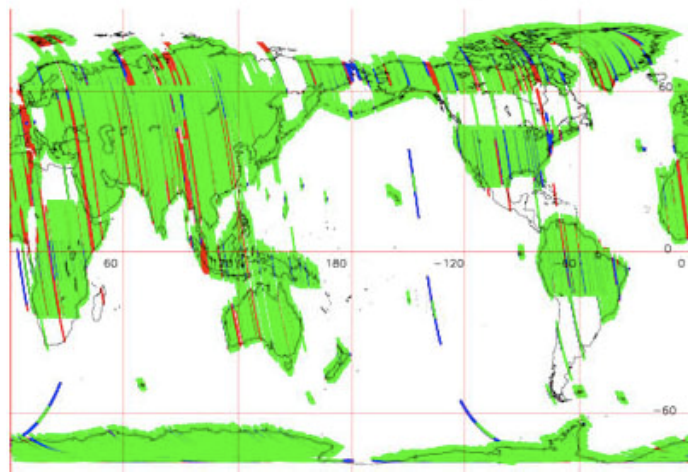
When updating, use the RSP maps sent to you by email in early February. For instructions on how to fill in these forms, consult:

[http://www.eorc.jaxa.jp/ALOS/kyoto/jan2007/pdf/4-01-Rosenqvist\\_KC7.pdf](http://www.eorc.jaxa.jp/ALOS/kyoto/jan2007/pdf/4-01-Rosenqvist_KC7.pdf)

Note again that the revision should ONLY concern the adjustment to the new off-nadir angle (for the ascending FBS and FBD passes; ScanSAR request is not affected), and that this is NOT an opportunity to increase your requests for data.

### PALSAR acquisition status @ AGAP

2006.12.06—2007.01.21 (cycle:8)



*PALSAR (ascending) acquisition status for Cycle 8*

The map above shows the acquisition status for PALSAR cycle 8, which was the first cycle where the systematic Observation strategy was implemented. **Green** - paths which have been acquired and browse images have been processed; **Red** - requested, but not scheduled; **Blue** - status not available.

Using the ALOS Geoscience and Applications Processor (AGAP) system you are able to check the status of the K&C observation strategy, cycle by cycle. For a test version of the system, see <http://www.eorc.jaxa.jp/ALOS/opn/>

*ALOS KYOTO & CARBON INITIATIVE*  
*SCIENCE TEAM NEWSLETTER NO. 1 (FEB. 2007)*

Mukaida-san is setting up user accounts, where you will be able to check the processing status of your specific requests (as defined in your Processing Request form).

Data download by FTP

Mukaida-san is still in the process of preparing the user accounts for your respective FTP directories, from which you will be able to download the data you have requested - by standard FTP or by the fast FTP ASPERA software.

We hope to have the first data on-line for you during the month of March.

Allocation of full resolution JERS and ALOS data

As mentioned earlier, K&C Science Team members have the possibility to request a limited number of full resolution ALOS data within the K&C framework. Each organisation with a K&C contract concluded has the following allocation EVERY Japanese Fiscal Year (JFY):

- \* 50 ALOS scenes
- \* 50 JERS-1 scenes.

Note that at the end of the fiscal year (which runs from April 1st to March 31st), a new allocation of 50+50 will be issued. Any unused holding from the previous year will be lost. Hence - in order not to lose your allocation for JFY2006 (this year), you must place your orders prior to March 31st!

ALOS orders are made via the ALOS User Interface Gateway (AUIG): <https://auig.eoc.jaxa.jp/auigs/en/top/index.html>

JERS-1 SAR orders are made via the older EOIS (Earth Observation Data and Information System): <https://www.eoc.jaxa.jp/iss/en/index.html>

Use the user names and passwords you received when concluding your K&C agreements with JAXA (one for each of the AUIG and EOIS systems). In case you still have not received those, contact the EORC Order Desk [orderdesk@jaxa.jp](mailto:orderdesk@jaxa.jp) immediately.

K&C Science Team meeting #7 – Presentations on-line

Meeting agenda and presentations are available on-line on the K&C home page at: [http://www.eorc.jaxa.jp/ALOS/kyoto/jan2007/kyoto\\_meeting\\_2007jan.htm](http://www.eorc.jaxa.jp/ALOS/kyoto/jan2007/kyoto_meeting_2007jan.htm)

8<sup>th</sup> Science Team meeting – new dates!

The 8<sup>th</sup> K&C Science Team meeting is scheduled for **(Mon-Wed) June 11-13, 2007**. Please note that the meeting dates have been shifted to the beginning of the week (in contrast to the information provided to you in my 020207 email to you). The reason is that all Tsukuba hotels were fully booked during the dates originally planned.

*ALOS KYOTO & CARBON INITIATIVE*  
*SCIENCE TEAM NEWSLETTER NO. 1 (FEB. 2007)*

The KC#8 meeting will focus on ironing out any remaining issues regarding data formats and data dissemination prior to the summer PALSAR dual-pol acquisition cycles, when most of you have requested data. There will not be a need for any team member presentations (except for team members who did not present at KC#7) but there will be more of a hands-on approach and time for Theme meetings. This will allow people to discuss problems and issues associated with the data. The tentative meeting schedule as follows:

---

Day 1:	Data dissemination issues and usage; the website; seeking and downloading data from the website; processing requests, update on the storage issue; CALVAL.
Day 2:	Half day continuation of the Day 1. Afternoon dedicated to the wetland and desert themes (e.g., progress, coordination), updating the science plan and material
Day 3:	Morning dedicated to the forest theme (e.g., progress, coordination), updating the science plan and material placement on the website. Afternoon concluding and making recommendations for further work placement on the website

---

**Outcomes from the Theme Coordinator meeting (22<sup>nd</sup> January, 2007)**

[by Richard Lucas]

Following the K&C Science Panel meeting, a coordination meeting was attended by the theme coordinators in conjunction with JAXA. The main outcomes from this meeting were:

**Production of a regular newsletter.**

To keep members informed of general issues and advances in ALOS data acquisition, processing and analysis, a newsletter will now be produced on a regular basis. The newsletter will summarise emails forwarded by JAXA and also contain contributions from panel members. If you have a contribution, please forward to Richard Lucas (Forests), Laura Hess (Wetlands), Bruce Chapman (Mosaics) and/or Philippe Paillou (Deserts) which will then be passed to Ake Rosenqvist (Editor-in-Chief).

**Development of Google Earth to display ALOS PALSAR images.**

Bruce Chapman will be coordinating with JAXA to start a demonstration of how Google Earth can be used to display ALOS PALSAR images. Once demonstrated, it is expected that the procedures will slot into existing JAXA ALOS processing and will be applied to the archive. For an example of a kml file used in Google Earth, see [http://southport.jpl.nasa.gov/test/ALOS\\_test.htm](http://southport.jpl.nasa.gov/test/ALOS_test.htm).

**Establishment of a dedicated K&C Website**

A wiki website is proposed that is likely to be served from the University of Wales Aberystwyth. This website will replace that developed earlier because of efficiency. The broad structure of the website is suggested below. A particular advantage of this approach is that the website can be edited by anyone, thereby reducing the need for website management. Please use this website when this becomes available. Comments and contributions to the website will be welcomed when this is up and running. We anticipate that this will be ready before the end of March but an email will be forwarded to you concerning this site.

*ALOS KYOTO & CARBON INITIATIVE*  
*SCIENCE TEAM NEWSLETTER NO. 1 (FEB. 2007)*

Top level description of the ALOS K&C																				
ALOS K&C DESCRIPTION		SCIENCE THEMES			SCIENCE TEAMS			FIELD SITES		ACQUISITION & PROCESSING					RESOURCES <sup>3</sup>				END USERS	
(Overview and link to science plan; observation strategy)																				
FORESTS					WETLANDS					DESERTS					MOSAICS					
General descriptions of themes																				
Study areas					“					“					“					
Collaborators					“					“					“					
Field validation					“					“					“					
<sup>1</sup> 1	2	3	4	5	1	2	3	4	5	1	2	3	4	5	1	2	3	4	5	
Summary of individual projects					“					“					“					
<sup>2</sup> Field sites																				
CALENDAR					ANNOUNCEMENTS					LINKS					PUBLICATIONS					
VIDEOS					PROCESSING ALGORITHMS															

<sup>1</sup>Field sites may be used by several science teams (e.g., wetlands and forests)

<sup>2</sup>Each K&C Member needs to have a section with links to individual websites etc.

<sup>3</sup>Wiki automatically updates

**Forest Theme Supplement**

A Forest Theme supplement is included to this newsletter. This relates to the presentation at IGARSS (see below) and also to the possibility of a Special Issue for the Canadian Journal of Remote Sensing on ALOS for forest applications.

Key dates and events

**IGARSS'07**

There will be an ALOS Special Session at IGARSS07 in Barcelona, Spain in July. Talks on the K&C are scheduled by Tony Milne (ALOS PALSAR for wetlands mapping and monitoring) and Richard Lucas (ALOS PALSAR for forest assessment), and on cal/val by Shimada-san and the JAXA team, and by Moreira/Kostas. K&C related talks are also scheduled in ordinary sessions (to my knowledge by myself, Philippe Paillou, Thuy Le Toan, Schullius/Santorio, Bruce Chapman, Fransson/Eriksson, For the talks by Tony Milne and Richard Lucas, material relating to recent results would be needed. Please email any information to [rml@aber.ac.uk](mailto:rml@aber.ac.uk) (Forest Theme) or Laura Hess ([lola@icess.ucsb.edu](mailto:lola@icess.ucsb.edu))/[t.milne@unsw.edu.au](mailto:t.milne@unsw.edu.au) (Wetlands Theme). An email requesting more specific information will be forwarded in the coming weeks. For the Forest Theme members, requests are detailed in the supplement.

*ALOS KYOTO & CARBON INITIATIVE*  
*SCIENCE TEAM NEWSLETTER NO. 1 (FEB. 2007)*

**Event scuedule**

The following table outlines key events which are of relevance to the K&C panel. If you have any events to add, or if you require any further information, please contact the relevant Theme Coordinator or Ake Rosenqvist.

<b>Dates</b>	<b>Event</b>	<b>Theme</b>	<b>Priority</b>
January 22, 2007	Coalition of Rainforest Nations, New York (Josef Kellendorfer attended)	F	
February 26 2007	GMES remote sensing for biodiversity workshop, World Conservation Monitoring Centre (WCMC) Cambridge UK (Richard L. attended)	F/W	
February	Final deadline for revised processing request sheets/forms	All	*
March 5-6, 2007	ALOS Cal/Val meeting, JAXA TKSC (Ake R. attending)	All	*
Open	Titles/abstracts for Forest Theme topics (Forest Theme only)	F	*
April 27, 2007	Deadline for IGARSS papers: material needed a month before.	F/W	*
March 26-30, 2007	Ramsar Convention, Science and Technology Review Panel meeting, Geneva, Switzerland (Ake R. attending) <a href="http://www.ramsar.org/meetings.htm">http://www.ramsar.org/meetings.htm</a>	W	*
March 31 <sup>s</sup> , 2007	Last chance to complete AUIG orders (standard products) for ALOS PALSAR and JERS-1 SAR data for fiscal year 2006. 50 scenes of each are available per year to each K&C project. Don't order at the last minute!	All	**
22-25 May 2007	AGU Joint Assembly, Acapulco, Mexico. Special session on "Remote Sensing and Modeling of Hydrologic and Methane Dynamics in Natural Wetlands" <a href="http://www.agu.org/meetings/ja07/?content=search&amp;show=detail&amp;sessid=305">http://www.agu.org/meetings/ja07/?content=search&amp;show=detail&amp;sessid=305</a>	W	
<b>June 11-13, 2007</b>	<b>8<sup>th</sup> K&amp;C Science Team meeting, Tsukuba.</b>	<b>All</b>	<b>***</b>
July 15 2007	Draft material/outline for Forest Theme Presentation at IGARSS.	F	
July 23-27, 2007	IGARSS'07, Barcelona, Spain <a href="http://www.igarss07.org/">http://www.igarss07.org/</a>	All	
Sept. 10-17, 2007	International Workshop on Environmental Changes and Sustainable Development in Arid and Semi-arid Regions. Inner Mongolia, China. (Philippe P. attending) <a href="http://www.igccas.ac.cn/iw07/index.htm">http://www.igccas.ac.cn/iw07/index.htm</a>	D	
Oct 30-Nov 2, 2007	Symposium on Radio Wave Propagation and Remote Sensing, Rio de Janeiro, Brazil. (Dalton in programme committee) <a href="http://www.users.rdc.puc-rio.br/ursif">http://www.users.rdc.puc-rio.br/ursif</a>	FW	
TBD	Deadlines for proposing a special session at INTECOL (20-25 July 2008, Cuiaba, Brazil) <a href="http://www.intecol.pakmultimedia.com.br/">http://www.intecol.pakmultimedia.com.br/</a>	W	
TBD	Deadline for proposing an AGU special session		
Oct/Nov, 2007	Deadline for proposing a special session at the Australasian Remote Sensing and Photogrammetry Conference (ARSPC)		
(TBD)	ALOS PI Meeting (Yokohama or Kyoto)		
December (TBD)	AGU Meeting (10-14 Dec 2007, San Francisco)		

Miscellaneous

**National Anecdotes**

At the initiative of Richard (again!), we will in each issue appreciate amusing anecdotes or photographs from the K&C team. Here is one from a Swedish colleague!

In Sweden, there are state owned stores that sell alcohol and the manger of one of the stores gets a late phone call asking politely:  
 "What time do you open the store tomorrow?"  
 The store manager replies:  
 "At nine o'clock".  
 An hour later, the phone rings again and the same man asks:  
 "Wha' tiiiiime do you open the store tomorrow?"  
 "At nine o'clock", the manager replies, slightly irritated.  
 An hour later, the phone rings again and the same man asks:  
 "Wha' tiiiiime do you oopen the store tom...?"  
 The manager looses patience and replies: "We open at nine o'clock. But as drunk as you are, we will NOT let you in!"  
 "Let me IN?", the man shouts. " I wanna get OUT!"!!!

**Offsetting Carbon Emissions**

Air travel to the K&C meetings is essential but the carbon emissions can be offset. See <http://www.co2balance.com/> as an example. The cost of a return flight from London to Tokyo was £19.00 as shown below.

SKU	Product	Item price
SKU113210737	Carbon Zero Flights <b>Options:</b> Offset Project: Bishops Wood, Devon Project Enter First Name: Richard Enter Surname: Lucas Certificate Text: CO2 Emissions Offset for return flight London Heathrow UK to Narita Japan. Certificate Type: eCertificate Include in the Roll of Honour: Yes Flight Info: For 2.11 tonnes of CO2 arising from a return journey for 1 person from London, Heathrow to Tokyo, Narita / New Tokyo International	£19.00



## Forest Theme Supplement

[by Richard Lucas]

At the Forest Theme Meeting, it was suggested that publication associated with the K&C Project was one important avenue by which the members could collaborate and exchange ideas and results (e.g., processing, classification and retrieval techniques).

A first opportunity to show results (which is perhaps too early for many) from the various themes is at IGARSS in Barcelona in July. Along with several other colleagues, I submitted an abstract to the Invited Session (IS43. M. Shimada/A. Rosenqvist) on preliminary results from Australian forests. However, this can be broadened or refocused to encompass early results from other forested regions if these are available. The deadline for full paper submission is April 2007 (<http://www.igarss07.org/frontal/Dates.asp>).

A second opportunity is with the Canadian Journal of Remote Sensing. I have been in contact with the Editor and he is favorable to the idea of a special issue on ALOS PALSAR for forest applications. There is no commitment or deadline for this, but it would be useful to have comments and for Forest Theme members to put forward suggested topics. There are two main options (although please feel free to put forward others)

- a) To submit papers by theme. At the Forest Theme Meeting, it was suggested that individual members could select a general topic (see below) such as mapping deforested areas or regrowth (e.g., in regions such as Australia and Brazil) from ALOS and then collate material/results from members working in these areas. In this way, members would become aware of the activities of others and this would promote exchange of ideas.
- b) To submit papers on particular regions. In this case, a paper could be written on, for example, regrowth mapping in Australia and one on regrowth mapping in Brazil. This would ultimately lead to exchange of ideas but probably after the work has been completed rather than when it is in progress.

I would therefore like to suggest the following:

- a) As a written paper needs to be put together for the IGARSS session, I would be happy to collate major results and integrate these in an 'early outcome' paper (note the deadline of 27<sup>th</sup> April). This would then form the basis for further discussion (e.g., at IGARSS but also between members) and a platform on which to focus further activities (e.g., future publication).
- b) An oral presentation also has to be given at IGARSS and so it would be helpful also to receive some material for this prior to the conference in July so that this can be included.



*ALOS KYOTO & CARBON INITIATIVE*  
*SCIENCE TEAM NEWSLETTER NO. 1 (FEB. 2007)*

It would also be useful to have feedback regarding the Special Issue for the Canadian Journal of Remote Sensing (including whether this is the most appropriate journal) and in particular the nature of the papers submitted. In the table below, I have suggested a framework which addresses Option a (see above) and have also filled in where interests might lie (as examples). Can I suggest the following:

- If you consider that Option a is a useful way to progress, then could you fill in your name and comments in the table below. You can either take the lead on this or elect to act as a co-author so state your preference as well.
- If you would prefer to stay within your chosen area (option b), then again, please email me with a suggested title/topic.
- If you have other suggestions, then please feel free to contact me to discuss.

In all cases, I will then collate the information and provide feedback to you. I hope that these suggestions help with progressing the Forest Theme.

With best wishes,  
 Richard Lucas,  
 Forest Theme Coordinator

<b>Suggested Topics for a Special Issue of the Canadian Journal of Remote Sensing</b>	
<b>The Role of ALOS PALSAR in Supporting Forest Assessment</b>	
The legacy of the JERS-1 SAR and overview of ALOS PALSAR	
<i>Ake Rosenqvist</i>	
1. Establishing deforested areas	
2. Regrowth mapping	
3. Forest structural mapping	
<i>Richard Lucas</i>	
4. Biomass retrieval through integration of ALOS PALSAR	
<i>Thuy Le Toan</i>	
5. Height retrieval from polInSAR data	
6. Relevance of ALOS data to carbon cycle science	
7. Benefits of ALOS PALSAR data in assessing and monitoring biodiversity (Conservation)	
8. Supporting international conventions	
9. Climate change impacts: observations using ALOS PALSAR	
10. Ecosystem restoration: information provision by ALOS PALSAR	